

IPCManager Tool Guide

Document Version: V1.0

Release Date: 2014/12

Menu

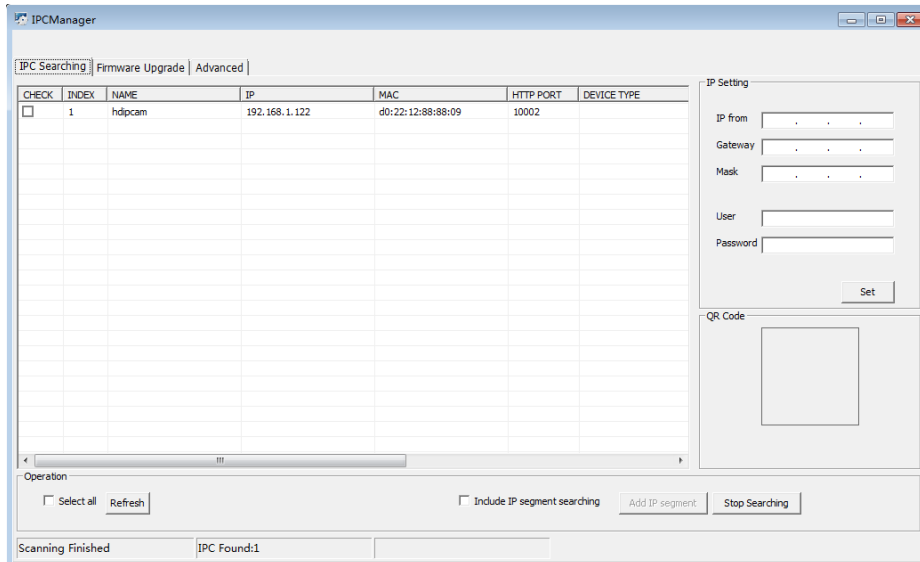
Part I: IPC search	3
1.1 Cameras search	3
1.2 View the camera by web browser.....	3
1.3 Modify camera's IP address.....	4
1.4 RTSP streaming	4
Part II: IPC upgrade.....	5
Part III: IPC advanced configuration	6
3.1 Modify the camera's protocol.....	6
3.2 Modify the camera's time	7
3.3 Export/Import IP camera's configuration	7
3.4 Restore user information.....	8

Part I: IPC search

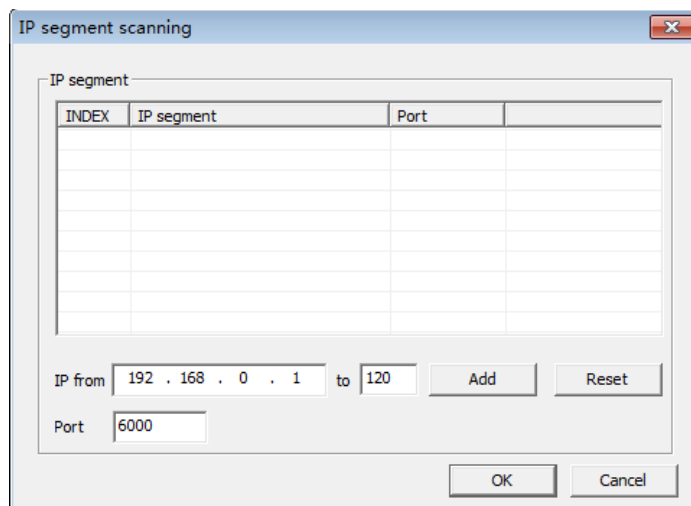
Please double click the software IPCManager to run it on your computer.

1.1 Cameras search

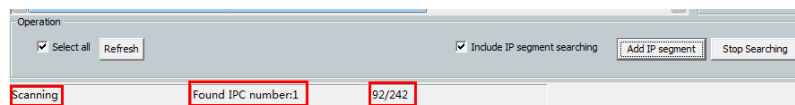
If the camera is connected in the same LAN with the computer, it will be listed on the software's main interface, as following image shown. Max. 8 pcs of cameras will be listed out. You can also click Refresh to get current camera list, if new cameras are connected.



Quick search can be done for cameras in a certain IP segment. Click the checkbox of Include IP segment searching and click Add IP segment. On the new pop-up window, input beginning IP and ending IP, click Add, then a new IP segment will be added to the list.



Click OK. Scanning begins. Scanning process shows on the bottom of the main interface. Click Stop Searching to stop it.



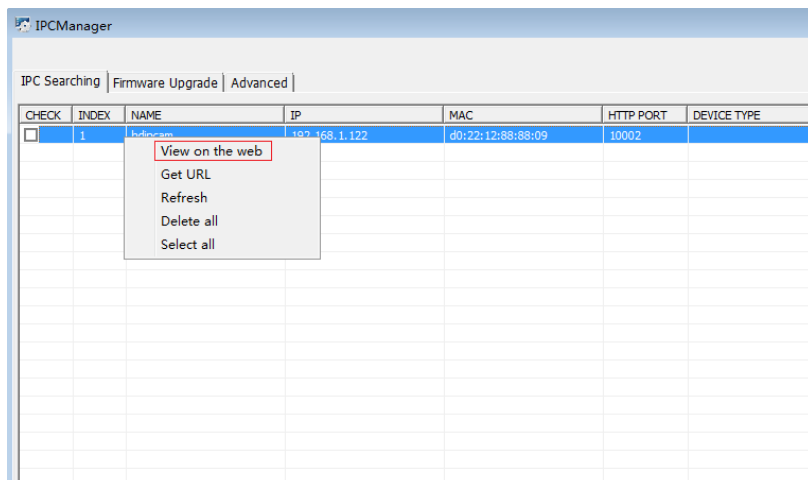
1.2 View the camera by web browser

Right click on the camera list, and select View on the web. This function will open the IP

camera on your default browser.

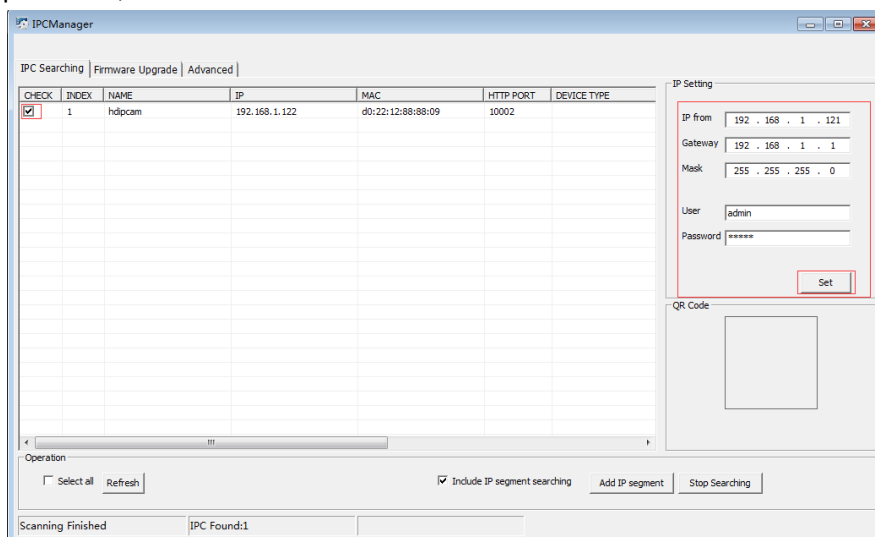
Notice: please make sure the camera and your PC are connected in same network segment.

Please modify their IP addresses to the same segment if not.



1.3 Modify camera's IP address

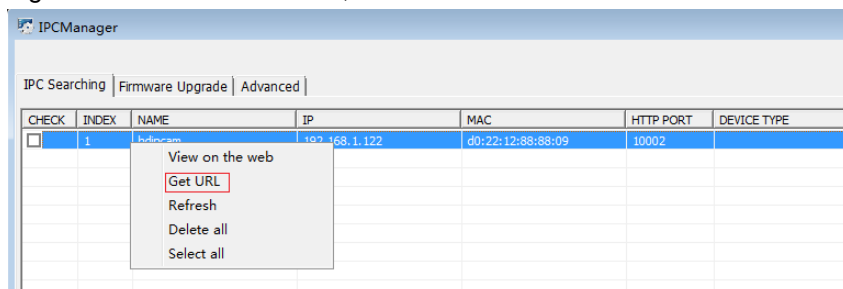
Click the checkbox of the camera, input the new IP address, gateway, mask, user name and password, and click Set to save it.



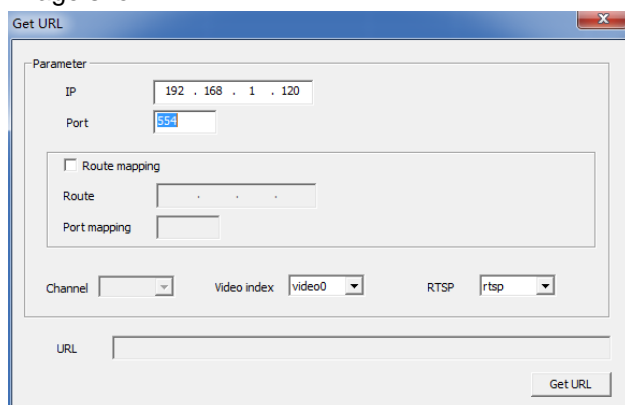
When there are many IP cameras in the list, select those you want to make changes, fill in the beginning IP address, gateway, mask, user name and password on the right part, and click "Set". Then IP addresses will be changed in sequence.

1.4 RTSP streaming

Right click on the camera list, and then select Get URL.

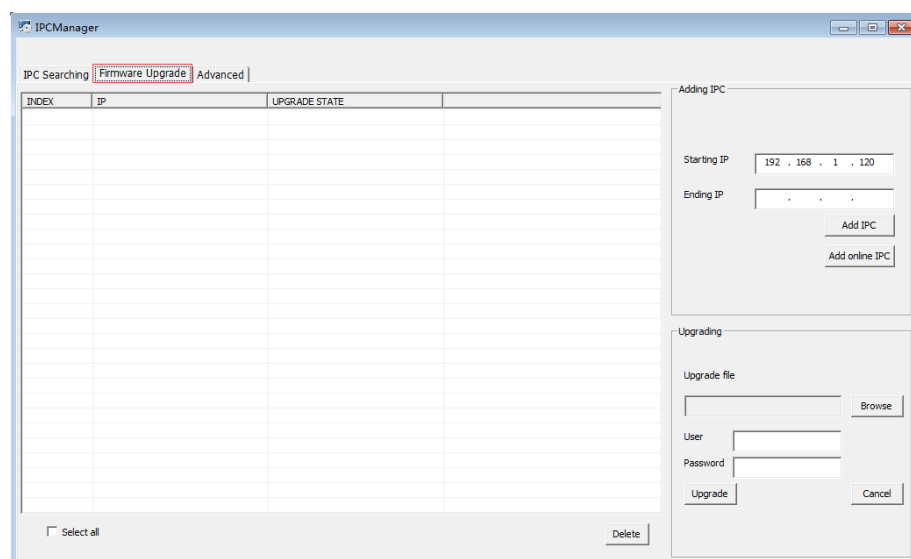


On the new pop-up window, please click Get URL to get its RTSP streaming link, as following image shown.



Part II: IPC upgrade

Click tab Firmware upgrade as following image shown.



1. Please add the cameras to upgrading list.

There are two ways to add cameras to upgrading list.

Way 1: Input Starting IP address & Ending IP address, then click Add IPC to add cameras manually.

Way 2: click Add online IPC to add all online IP cameras.

2. Select the right camera & upgrade file to do updating.

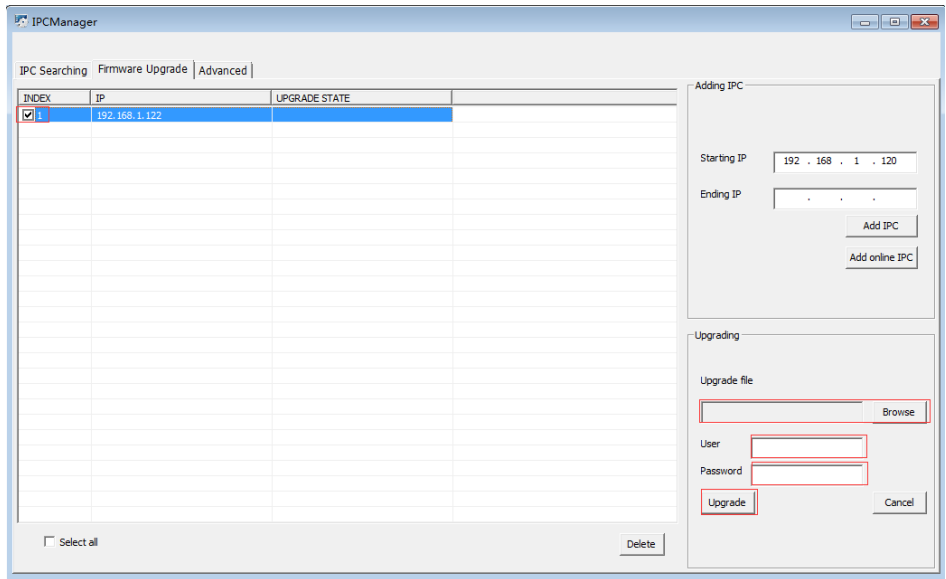
3. Select the right camera & upgrade file to do updating, then input username and password.

Click Upgrade, then waiting for its upgrade state showing you success. It will be reboot after the upgrade, it will take around (1-10) minutes.

You can select all the cameras in the list, and do upgrading at the same time.

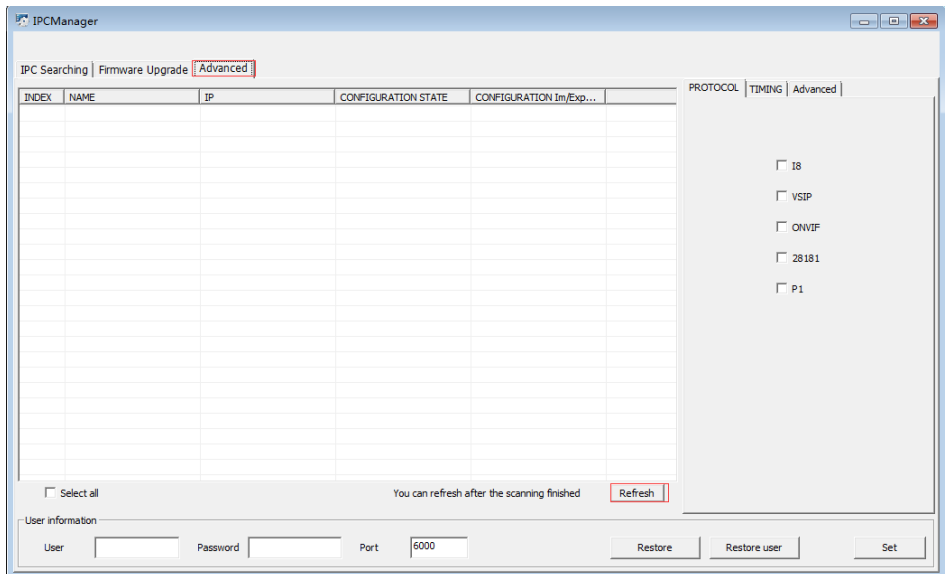
Please don't power off when upgrading.

Please turn off the Windows Firewall before upgrading.



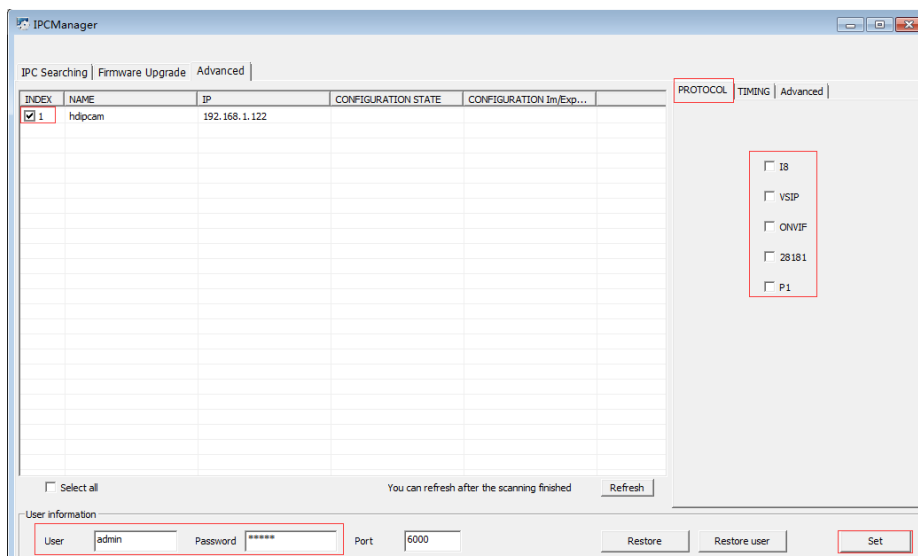
Part III: IPC advanced configuration

Click tab Advanced as following image, then click Refresh, as following image shown.



3.1 Modify the camera's protocol

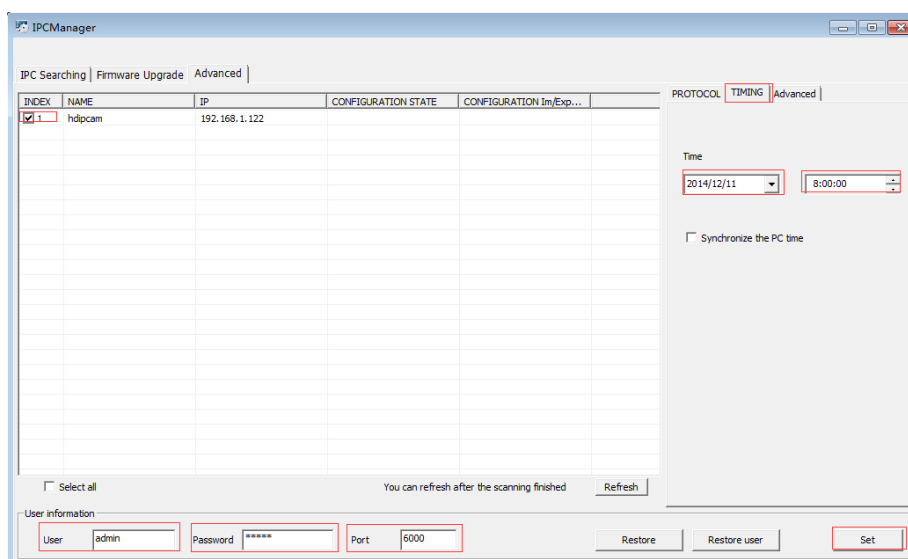
Select the camera from the list, input its username, password, and port, select protocol to it, and then press set to save the setting.



3.2 Modify the camera's time

Click the checkbox of the camera, input the right user information (username, password and port) and date/time, then click Set to save it. After that, please wait for the configuration state show you succeed.

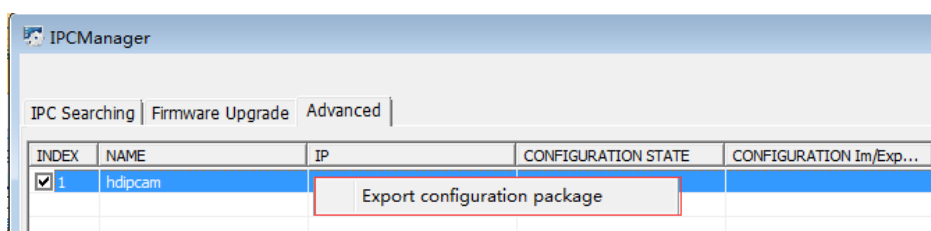
You can also synchronize the camera time with the PC time.



3.3 Export/Import IP camera's configuration

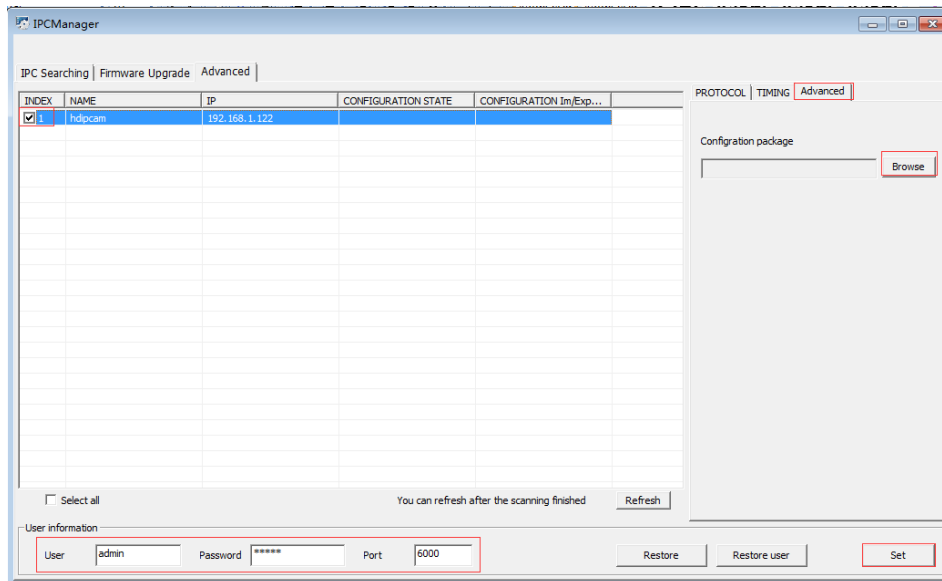
Export configuration package:

Select the camera from the list, input its username, password and port, then right click the camera list, select Export configuration package to export IP camera's configuration. Choose the path to save configuration file (*.bin) in pop-up window.



Import configuration package:

Select the camera from the list, and input the right user information, then click Browse to select the configuration package. Click set to start import. Please wait for the configuration state show you succeed.



3.4 Restore user information

Select the camera from the list, and input the right user information, then click Restore user, default user info will be valid. Or click Restore to set all camera parameters to default settings. After that, please wait for the configuration state show you succeed.

