

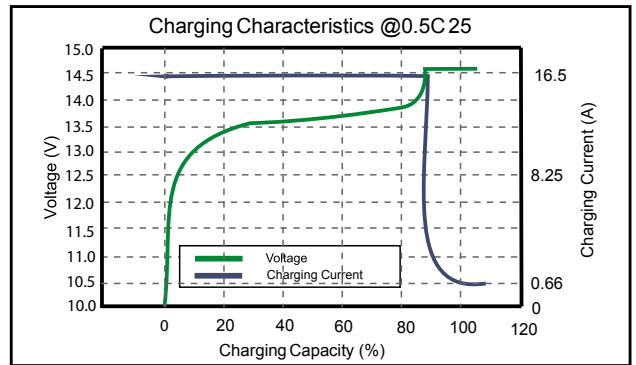


Lithium Iron Phosphate Battery

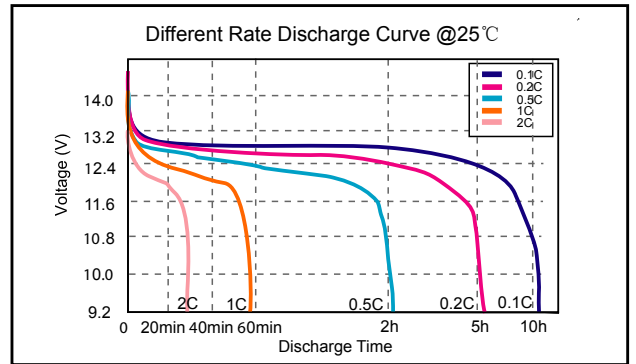
LiFe12-33

12.8V33Ah

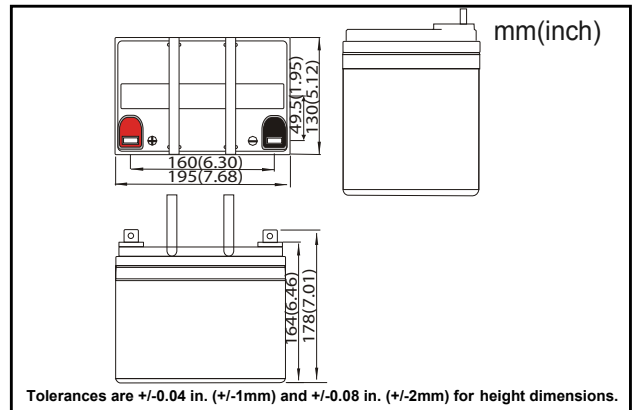
Charge Characteristics



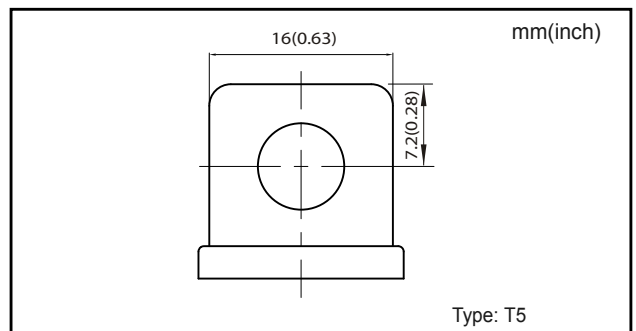
Different Rate Discharge Curve



Dimensions



Terminal



Features of LiFePO4 Battery

Lithium Iron Phosphate Batteries are lighter with longer cycle life than traditional batteries. Along with superior safety and environmental records, it can be used in many applications such as UPS, telecom, solar & wind storage, electric wheelchair, etc.

Specification

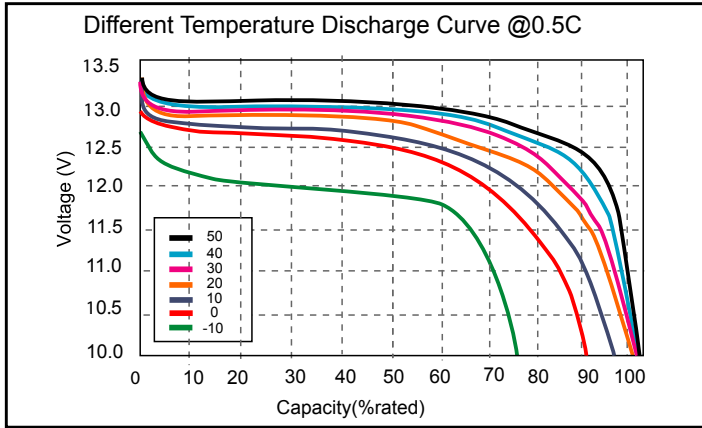
• NOMINAL VOLTAGE	: 12.8V
• NOMINAL CAPACITY(C5,25°C)	: 33Ah
• DIMENSIONS	
HEIGHT	: 178 mm (7.01 inches)
WIDTH	: 130 mm (5.12 inches)
LENGTH	: 195 mm (7.68 inches)
• NET WEIGHT(UNIT)	: APPROX 4.80 Kg (10.58lbs)
• INTERNAL RESISTANCE	: 40mΩ
• MONTHS SELF DISCHARGE	: < 3%
• CYCLE LIFE	: > 2000 cycles @ 1C 100%DOD

Characteristics

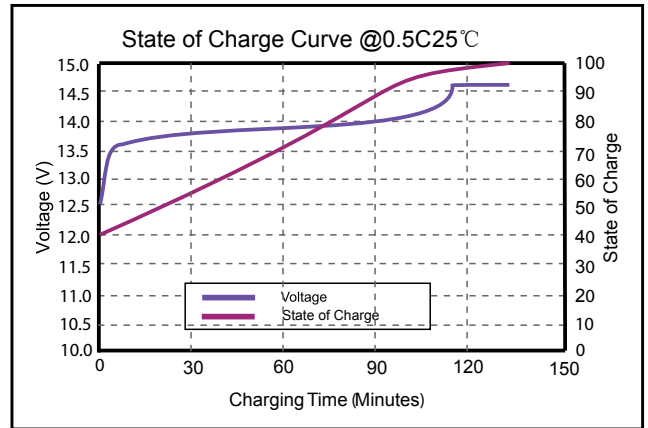
• CHARGE MODE: 0.2C to 14.6V, then 14.6V, charge current to 0.02C(CC/CV)	
• CHARGE VOLTAGE	: 14.6 ± 0.2V
• CHARGER CURRENT	: 16A
• MAX. CHARGE CURRENT	: 33A
• CHARGE CUT-OFF VOLTAGE	: 15.6V ± 0.2V
• EFFICIENCY OF CHARGE	: 100% @ 0.5C
• DISCHARGE MAX. PULSE CURRENT	: 60A(<3S)
• CONTINUOUS DISCHARGE CURRENT	: 50A
• DISCHARGE CUT-OFF VOLTAGE	: 8V
• EFFICIENCY OF DISCHARGE	: 96~99% @ 1C
• CHARGE TEMPERATURE: 0°C~45°C@60 ± 25% Relative humidity	
• DISCHARGE TEMPERATURE: -20°C~60°C@60 ± 25% Relative humidity	
• STORAGE TEMPERATURE: 0°C~40°C@60 ± 25% Relative humidity	
• WATER DUST RESISTANCE	: IP56
• CELL & METHOD	: 26650 4S10P
• PLASTIC CASE	: ABS
• PROTOCOL(OPTIONAL)	: SMBus/RS485/RS232
• SOC(OPTIONAL)	: LED

*Specifications subject to change without notification.

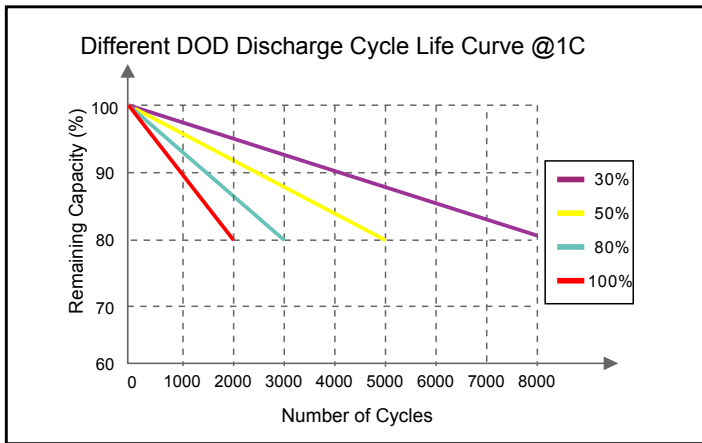
Different Temperature Discharge Curve



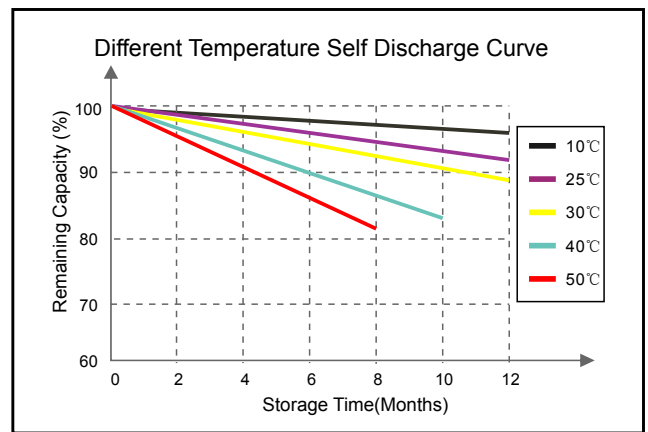
State of Charge Curve



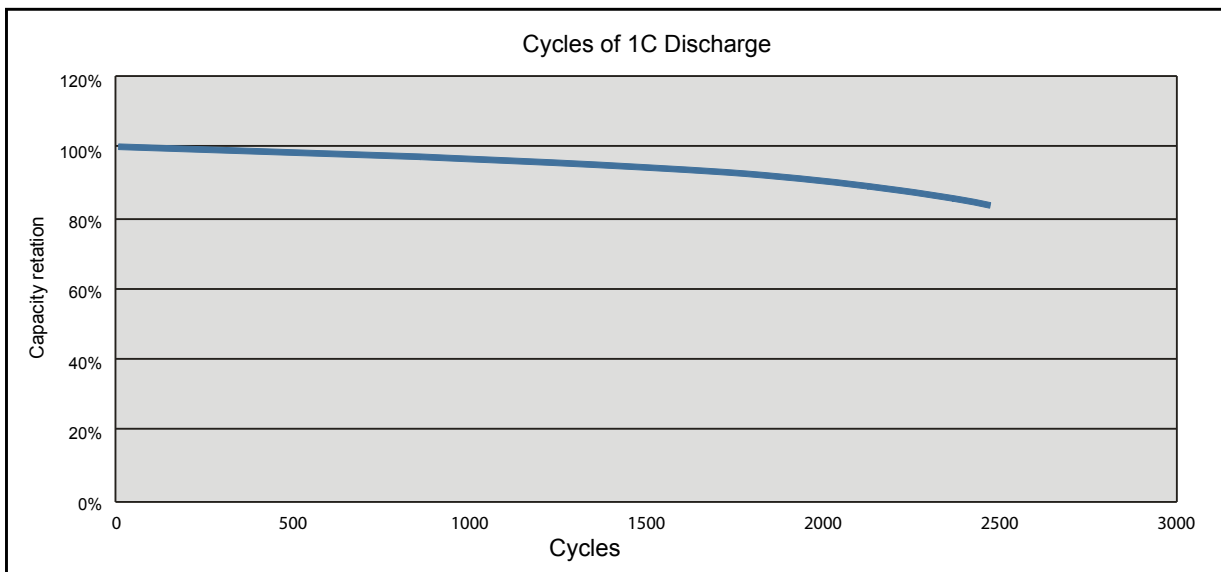
Cycle Life Curve



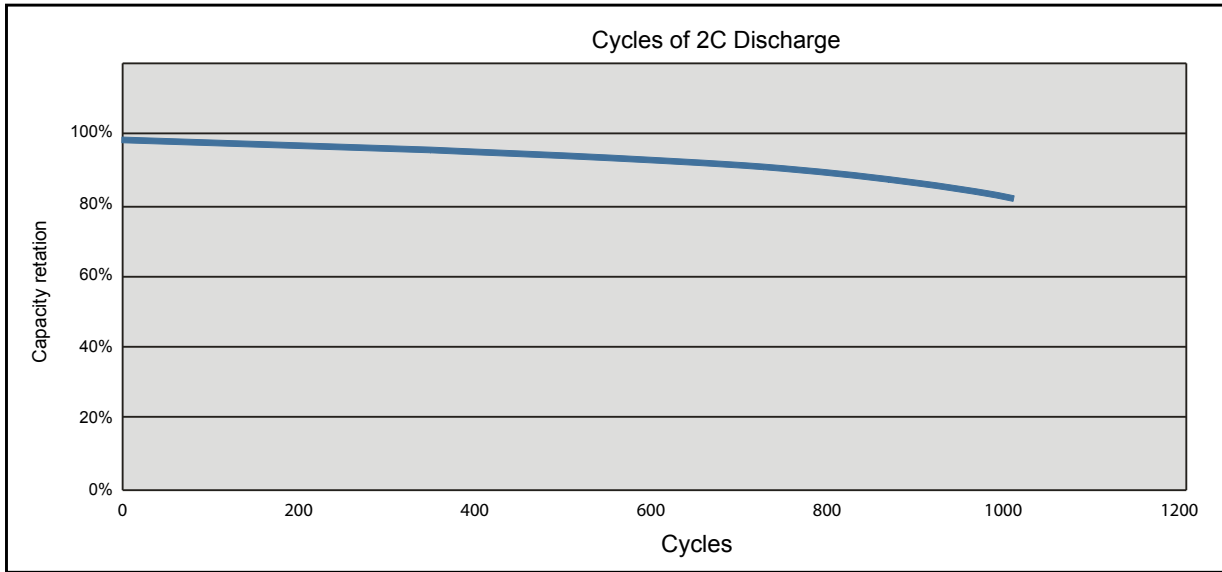
Self Discharge Characteristics Curve



Cycle Life @ 1C Discharge



Cycle Life @ 2C Discharge



Cycle Life @ 3C Discharge

