



**WI-CPE211**  
**2.4GHz 300Mbps**  
**Outdoor CPE Data sheet**

## Highlights

- 300mW High power output, coverage up to 5KM for PTP and PTMP application
- Wireless B/G/N speed up to 300Mbps
- Support AP, Client, AP-Repeater, Mesh wireless mode
- Support open frequency from 2300 to 2700 MHz
- Inside 60 degree 12dBi Directional Antenna Technology
- 25dBm High-Power design
- 2x2 MIMO Technology
- Passive PoE Adapter supports up to 100 meter
- Atheros AR9341 600MHz Chipset, 64MB RAM
- 10KV Lightning Protection



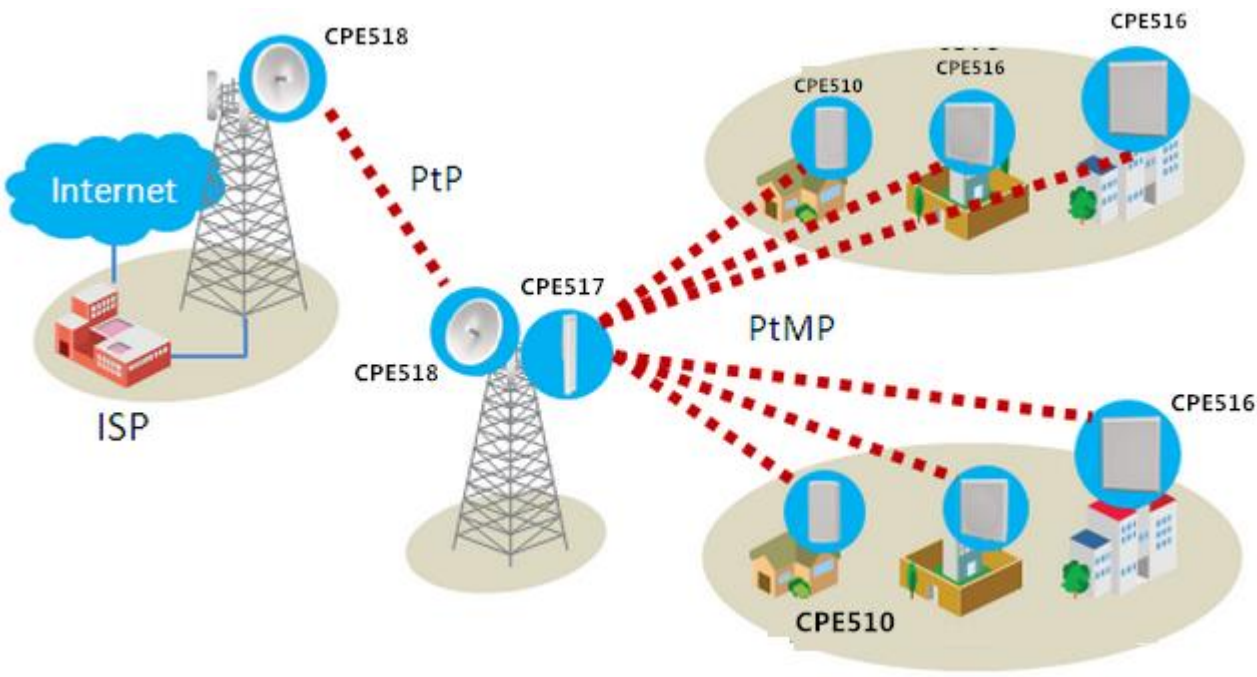
Tx Power Specs				Rx Power Specs			
	Data Rate	Tx Power	Tolerance		Data Rate	Sensitivity	Tolerance
802.11b/g/n	1-24 Mbps	28 dBm	±2dB	802.11b/g/n	1-24 Mbps	-84 dBm	±2dB
	36 Mbps	26 dBm	±2dB		36 Mbps	-80 dBm	±2dB
	48 Mbps	25 dBm	±2dB		48 Mbps	-70 dBm	±2dB
	54 Mbps	24 dBm	±2dB		54 Mbps	-75 dBm	±2dB
802.11n	MCS0	28 dBm	±2dB	802.11n	MCS0	-96 dBm	±2dB
	MCS1	28 dBm	±2dB		MCS1	-95 dBm	±2dB
	MCS2	28 dBm	±2dB		MCS2	-92 dBm	±2dB
	MCS3	28 dBm	±2dB		MCS3	-90 dBm	±2dB
	MCS4	27 dBm	±2dB		MCS4	-86 dBm	±2dB
	MCS5	25 dBm	±2dB		MCS5	-83 dBm	±2dB
	MCS6	23 dBm	±2dB		MCS6	-77 dBm	±2dB
	MCS7	22 dBm	±2dB		MCS7	-74 dBm	±2dB
	MCS8	28 dBm	±2dB		MCS8	-95 dBm	±2dB
	MCS9	28 dBm	±2dB		MCS9	-93 dBm	±2dB
	MCS10	28 dBm	±2dB		MCS10	-90 dBm	±2dB
	MCS11	28 dBm	±2dB		MCS11	-87 dBm	±2dB
	MCS12	27 dBm	±2dB		MCS12	-84 dBm	±2dB
	MCS13	25 dBm	±2dB		MCS13	-79 dBm	±2dB
	MCS14	23 dBm	±2dB		MCS14	-78 dBm	±2dB
MCS15	22 dBm	±2dB	MCS15	-75 dBm	±2dB		

## Description

Wi-Tek's WI-CPE211 is a 2.4GHz 300Mbps 2x2 MIMO outdoor wireless CPE based on 802.11a/b/g/n technology. It is high performance, cost-effective and dedicated to long distance wireless network solutions. Featuring the revolutionary Wi-Tek technology in firmware design and 12dBi directional dual-polarized antenna, WI-CPE211 is specialized designed for rural Internet access, long distance wireless data transmission, wireless coverage extension and other industrial wireless solutions. WI-CPE211 is widely used in various fields of communication:

- ◆Point-to-point, Point-to-multipoint wireless communication
- ◆Wireless Video Surveillance
- ◆Enterprise wireless LAN interconnection
- ◆Mobile operators WISP large customer access system
- ◆Wi-Fi Wireless city coverage

## Typical Applications



## Specifications

HARDWARE FEATURES	
Processor	Atheros AR9341
Memory	64MB SDRAM 8MB Flash
Interface	1X10/100BASE-TX Ethernet Interface
Power Supply	24V Passive PoE Adapter Included

<b>Power Consumption</b>	8W
<b>Dimensions ( H x W x D )</b>	263x102x106mm
<b>Antenna Type</b>	Built-in 12dBi Dual-polarized Antenna Horizontal beam width: 60degree Vertical beam width: 15degree
<b>Protection</b>	10KV Lightning Protection
<b>Enclosure</b>	Outdoor UV Stabilized Plastic IP65 waterproof Certification

<b>WIRELESS FEATURES</b>	
<b>Wireless Standards</b>	802.11b/g/n
<b>Protocol</b>	CSMA/CA,TCP/IP,IPX/SPX, NetBEUI, DHCP
<b>Wireless Mode</b>	AP, Client, AP-Repeater, Mesh
<b>Wireless Speeds</b>	11a:54M,48M,36M,24M,18M,12M,9 M,6Mbps 11n:6.5M, 13M, 13.5M, 19.5M, 26M, 27M, 39M, 40.5M, 52M, 54M, 58.5M, 65M, 81M, 108M, 121.5M, 135M, 150M, 270M, 300Mbps
<b>Frequency</b>	2300-2700Hz

<b>WIRELESS FEATURES</b>	
<b>Transmission Power</b>	25dBm(300mW)

<b>SOFTWARE FEATURES</b>	
<b>Wireless Configurations</b>	802.11b/g/n Modes Selectable Channel Width: 20/40MHz Automatic Channel Selection Transmission Power Control Dynamic Frequency Selection (DFS) WDS Enable/Disable Security: WPA/WPA2, WPA-PSK/WPA2-PSK (AES/TKIP) Encryption, 64/128/152-bit WEP Encryption SSID Broadcast Enable/Disable Distance/ACK Timeout Setting Wireless MAC Address Filter Wireless Advanced: > Beacon Interval/RTS Threshold/Fragmentation >Threshold/DTIM Interval/AP Isolation/Short GI/Wi-Fi Multimedia
<b>Management</b>	WEP management Serial
<b>System-level Optimizations</b>	Optimized IGMP Snooping/Proxy for multicast applications Hardware watch dog

<b>OTHERS</b>	
<b>Certification</b>	CE
<b>Package Contents</b>	1*CPE 1*PoE Adapter 1* Pole Mounting Kit included
<b>System Requirements</b>	Microsoft Windows 98SE, NT, 2000, XP, Vista™ or Windows 10, Windows 8, Windows 7, MAC OS, NetWare, UNIX or Linux. Note: We recommend you to use one of following Web browsers for an improved user experience: Google Chrome, Safari, and Firefox. IE browsers are not recommended.
<b>Environment</b>	Working Temp: -40 ~ 70°C Storage Temp: -40 ~85°C Working Humidity: 10%~95% non-condensing



**WIRELESS-TEK TECHNOLOGY LIMITED**  
[www.wireless-tek.com](http://www.wireless-tek.com)  
 Email: [sales@wireless-tek.com](mailto:sales@wireless-tek.com)  
 Technical Support: [tech@wireless-tek.com](mailto:tech@wireless-tek.com)