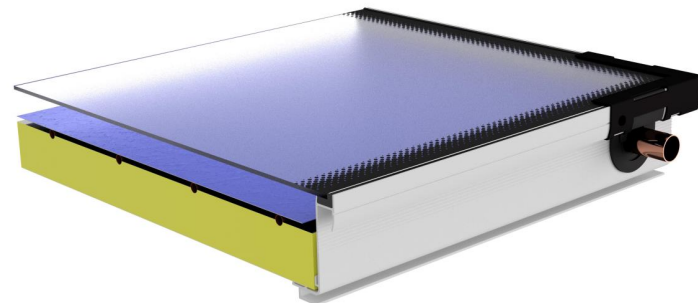




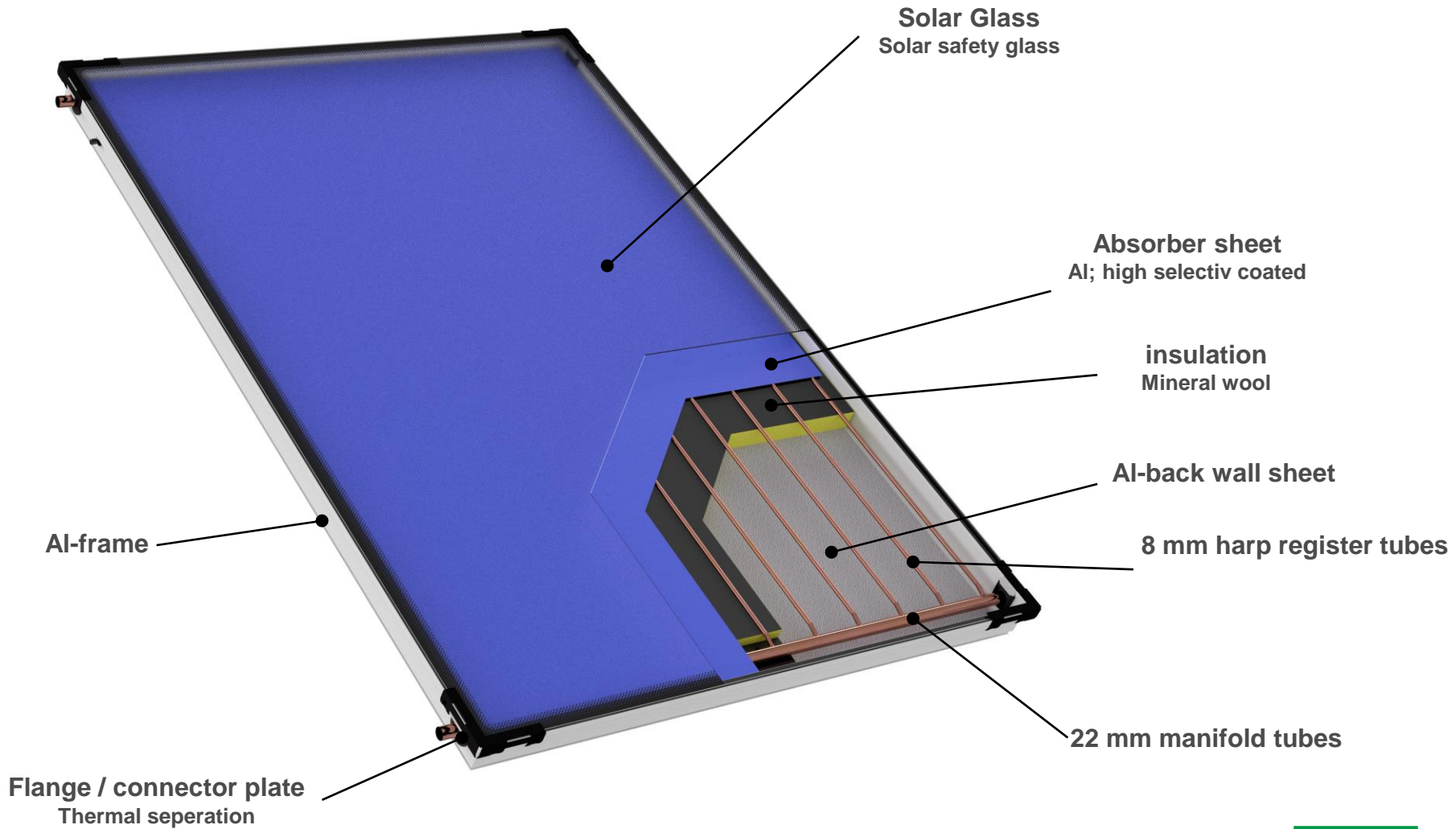
FK 8003 Series (7one) PRODUCT PRESENTATION

PRODUCT BENEFITS

- The wave frame design combined with the black frame solar glass provides a unique look
- In-roof installation possible
- Suitable for universal use for all installation types; parallel roof, in-roof or flat roof
- The robot-controlled production line ensures the highest levels of precision during the production process
- Tempered solar safety glass
- Easy-to-install fastening system for all standard roof types
- The intelligent fastening concept with a groove/T-head bolt system ensures the shortest possible installation timeSolar

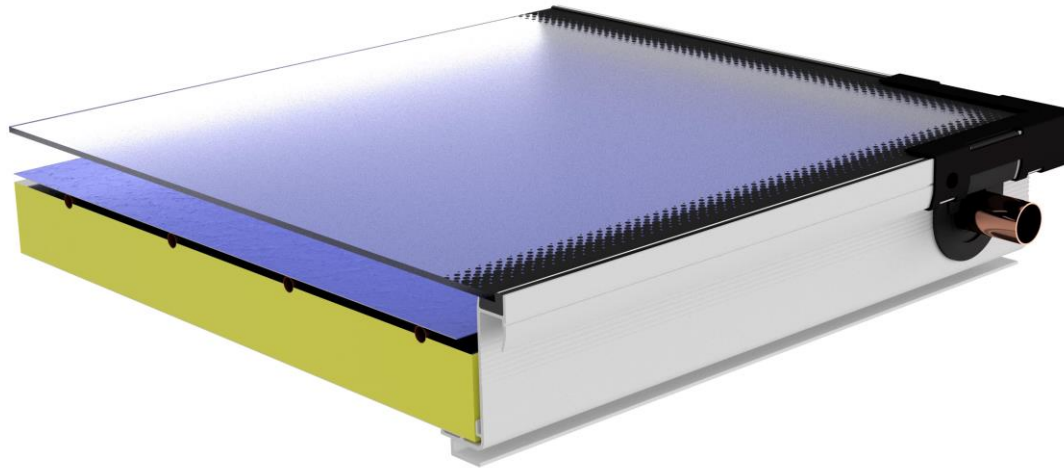


DESIGN DETAILS



AVAILABLE MODELS / OPTIONS

Available collector model size
2,0m² and 2,5m² (horizontal/vertical)



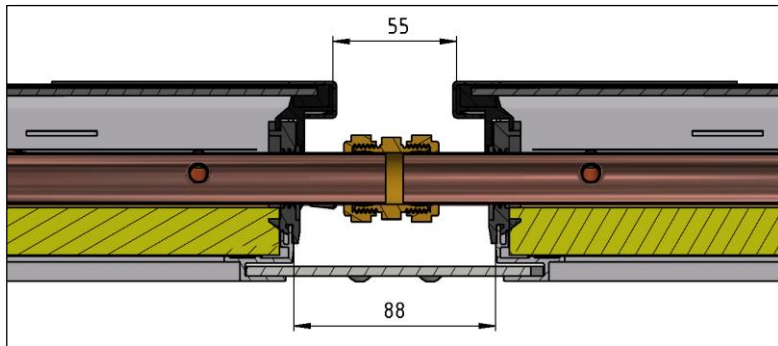
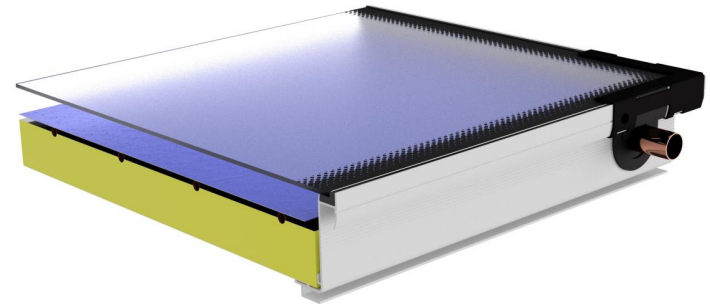
TECHNICAL DATA

| Technical data | FK 8203 | FK 8253 |
|----------------------------------|---|------------------|
| Type | Frame collector | |
| Gross area [m²] | 2,02 | 2,51 |
| Absorber area [m²] | 1,84 | 2,31 |
| Aperture area [m²] | 1,84 | 2,31 |
| L x B x H [mm] | 1730 x 1170 x 83 | 2150 x 1170 x 83 |
| Weight (empty) [kg] | 31 | 38 |
| Absorber Capacity [l] | 1,56 | 1,77 |
| Collector frame | Al-frame | |
| Frame finish | Al, natural | |
| Back plate | Al-sheet | |
| Absorber type | Al, highly selectively coated | |
| Absorption [%] | 95 | |
| Emission [%] | 5 | |
| Ø Manifold tube [mm] | 22 | |
| Ø Riser tube [mm] | 8 | |
| Collector connections | blank copper ends (for use with compression joints) | |
| Glass sheet | 3.2 mm tempered solar safety glass | |
| Transmisson [%] | 90 | |
| Insulation | 40 mm mineral wool plate | |
| Max. stagnation temperature | 192°C under norm conditions | |
| Max. operation pressure | 10 bar | |
| Permissibly heat transfere fluid | Polypropylene glycol / water mixture | |
| Permissibly installation angle | min. 15° - max. 75° | |
| Standard packaging | Single shrinked, 8 pcs. horizontal | |

HYDRAULIC CONNECTION

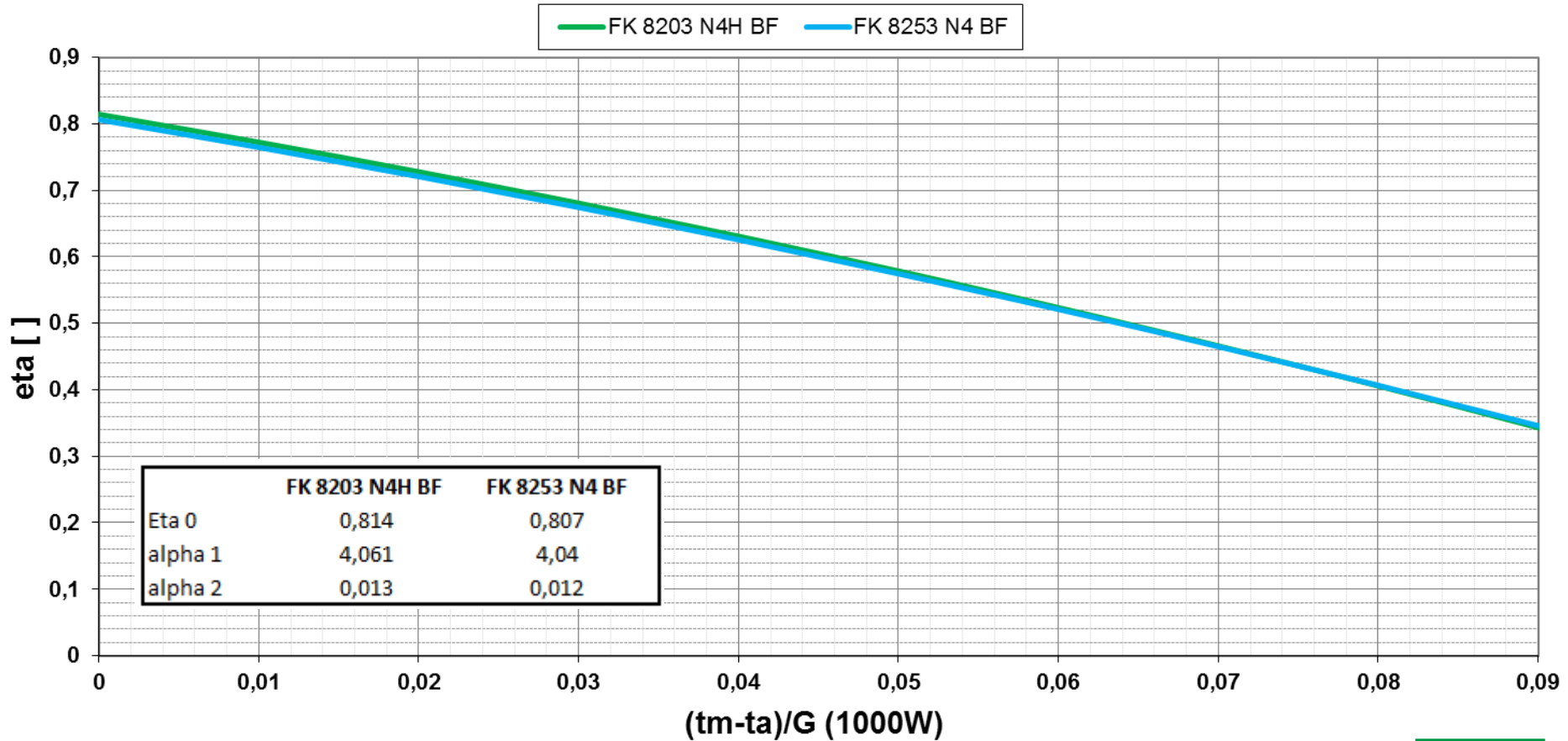
- Low cost connectors by using compression fitting coupling
 - Isposability in all markets
 - Easy handling
 - Unmistakable mounting

- Easy & simple !!!



PERFORMANCE FIGURES

efficiency curves
(apertur m²)

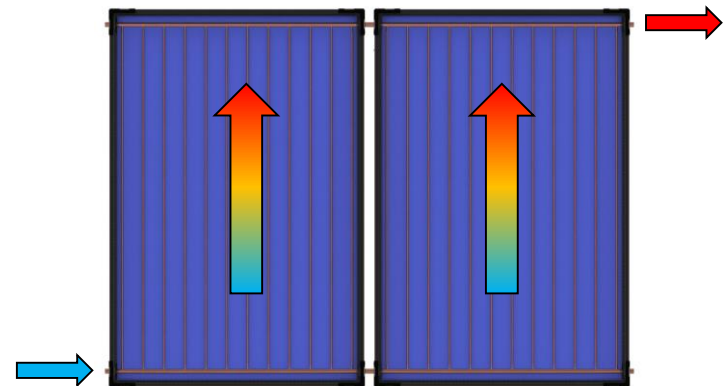


HYDRAULICS – USING HARP ABSORBER WITH 4X OUTLETS (CONNECTIONS)

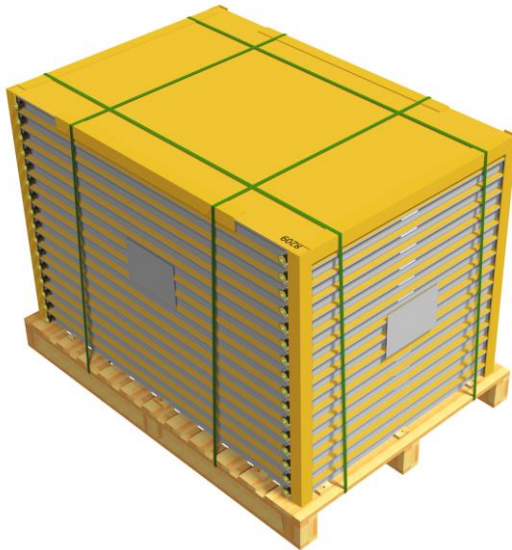


BENEFITS

- **6 parallel connections** single collectors possible
- **Low pressure losses** by compact solar fields
- **Individual flow rate** through optimal block sealing washer



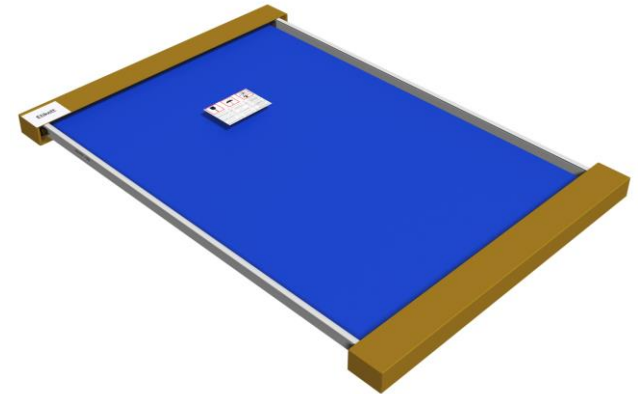
VERPACKUNGSVARIANTEN



flat stacked packaging
16 pcs. truck



upright packaging
8 pcs. on wooden pallet



Single packaging
for containers

AVAILABLE PACKAGING OPTIONS

- upright packaging: packaged individually (2.0/2.5 m²)
 - 8 pcs per Pallet
 - Capacity: 240 pcs / Truck
- Flat stacked packaging: Collector with cardboard protection on corners and between pannels
 - 16 pcs per Pallet
 - Capacity: 160 pcs / Truck
- Container loads for 2,5 m² Collector:
 - 20' Container: 105 STK
 - 40' Container: 220 STK
- Container loads for 2,0 m² Collector:
 - 20' Container: 125 STK
 - 40' Container: 260 STK

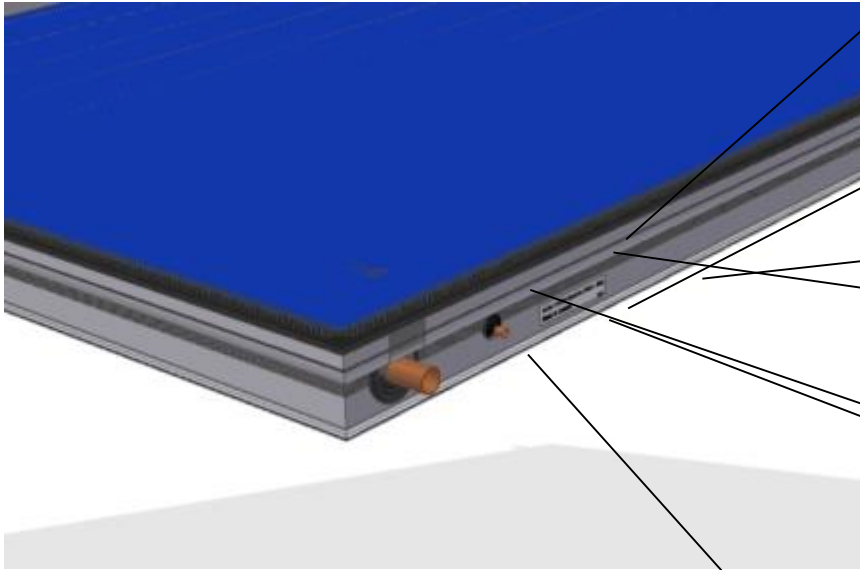


PRODUCT CERTIFICATION



The Certification Mark for Onsite
Sustainable Energy Technologies

CUSTOMER SPECIFIC LABELLING



GREENoneTEC Information

Art-No.: 110875.1 / Serial No.: 10/05 - 328
Made in Austria

6903034.1

Customer Specific Information



Product name Customer
Flat plate collector

AG = 2,02 m² t_{stg} = 234 °C
V_F = 1,56 l p_{max} = 10 bar
m = 35 kg
l x b x h = 1,73 x 1,17 x 0,83 m

Customer Logo

6903038.1

Art-No.: 130761.1
Serial No.: 0009

Made in Austria

MOUNTING OVERVIEW

| | | | |
|---------------------|---|--|---|
| |  |  |  |
| Mounting | Flat Roof | On-Roof | In-Roof |
| Mounting Set | SS45 | DB0 / SS0 | Metal sheet flashing |
| Orientation | vertical / horizontal | vertical / horizontal | vertical single and parallel row |
| Roof tiles | | <ul style="list-style-type: none"> ■ Clay roofing tile (DB) ■ Crown tile (DB) ■ Slate (SS) ■ Wave cement asbestos (SS) ■ Metal Sheet (SS) | Clay roofing tile up to 50mm |

INSTALLATION SETS MATRIX

2.0m² - FK8203

| 2.0 m2 | | FK8203N 4H (2sqm) - vertical (portrait) mounting | | | | |
|--------------|---|--|-------------|-------------|-------------|-------------|
| GoT Name | Detailed description | 2x collector | 3 collector | 4 collector | 5 collector | 6 collector |
| FK8203N 4H | Solar thermal collector | 2 | 3 | 4 | 5 | 6 |
| | Required mounting levels for STANDARD Load (see installation manual) | 3 | 4 | 5 | 6 | 7 |
| TRPN1 | Support rail for 1 collector portrait | | 1 | | 1 | |
| TRPN2 | Support rail for 2 collector portrait | 1 | 1 | 2 | 2 | 3 |
| TRPL1 | Support rail for 1 collector horizontal | | | | | |
| VS | Support rail connecting bracket set | | 1 | 1 | 2 | 2 |
| DB0N2 | Roof bracket (hook) set for 2 panel installation | 1 | 1 | 1 | 1 | 1 |
| DB0N1 | Roof bracket (hook) extension set | | 1 | 2 | 3 | 4 |
| DB0L1 | Roof bracket set for landscape mounting | | | | | |
| DB0L1 ES | Roof bracket extension set for landscape mounting | | | | | |
| SS0N2 | Bold screw basic set | 1 | 1 | 1 | 1 | 1 |
| SS0N1 | Bold screw extension set | | 1 | 2 | 3 | 4 |
| SS0L1 | Bold screw set for landscape mounting | | | | | |
| SS0L1 ES | Bold screw extension set for landscape mounting | | | | | |
| SS45N2 | Bold screw A-frame 45 degree basic set | 1 | 1 | 1 | 1 | 1 |
| SS45N1 | Bold screw A-frame 45 degree extension set | | 1 | 2 | 3 | 4 |
| SS45L1 | Bold screw A-frame 45 degree set for landscape mounting | | | | | |
| SS45L1 ES | Bold screw A-frame 45 degree extension set for landscape mounting | | | | | |
| | Fittings | | | | | |
| RE | Roof entering set (2x 700mm flexible pipes with insulation) | 1 | 1 | 1 | 1 | 1 |
| GS | Compression basic set for 2 panels | 1 | 1 | 1 | 1 | 1 |
| ES | Compression extension set | | 1 | 2 | 3 | 4 |
| GS landscape | Compression basic set for landscape mounting (1x Insulated corrugated tube; length 390 mm) | | | | | |
| ES landscape | Compression extension set for landscape mounting (1x Insulated corrugated tube; length 390 mm) | | | | | |
| | Flashing sets - for vertical (portrait mounting only) | | | | | |
| BS | Flashing basic set for 2 panels | 1 | 1 | 1 | 1 | 1 |
| ES | Flashing extenshin set | | 1 | 2 | 3 | 4 |

| FK8203N 4H (2sqm) - horizontal (landscape) mounting | | | | | |
|---|--------------|-------------|-------------|-------------|-------------|
| 1x collector | 2x collector | 3 collector | 4 collector | 5 collector | 6 collector |
| 1 | 2 | 3 | 4 | 5 | 6 |
| 2 | 3 | 4 | 7 | 8 | 10 |
| | | | | | |
| 1 | 2 | 3 | 4 | 5 | 6 |
| | | | | | |
| | 1 | 2 | 3 | 4 | 5 |
| | | | | | |
| | | | | | |
| 1 | 1 | 1 | 1 | 1 | 1 |
| | 1 | 2 | 3 | 4 | 5 |
| | | | | | |
| | | | | | |
| 1 | 1 | 1 | 1 | 1 | 1 |
| | 1 | 2 | 3 | 4 | 5 |
| | | | | | |
| | | | | | |
| 1 | 1 | 1 | 1 | 1 | 1 |
| | 1 | 2 | 3 | 4 | 5 |
| | | | | | |
| | | | | | |
| 1 | | 1 | 2 | 3 | 4 |
| | | | | | |
| | | | | | |

INSTALLATION SETS MATRIX

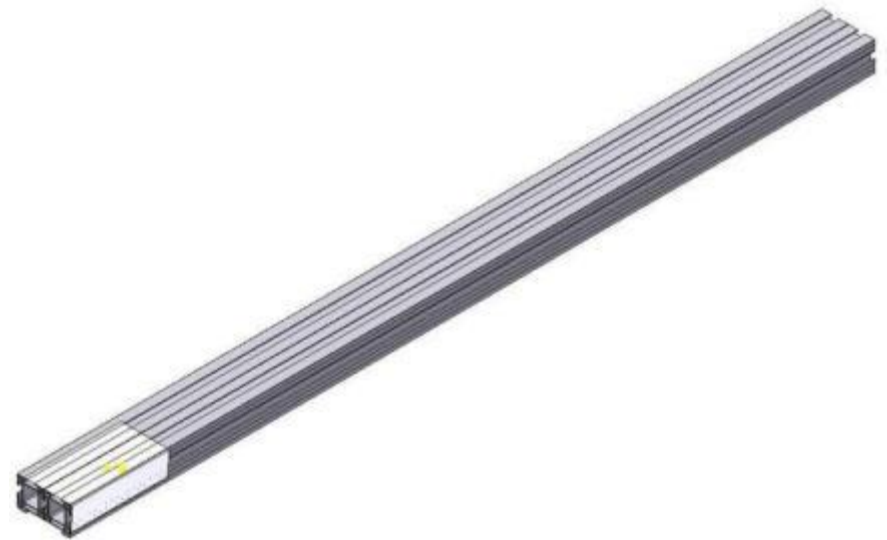
2.5 m² FK8253

| 2.5 m2 | | FK8253N 4H (2.5sqm) - vertical (portrait) mounting | | | | |
|--------------|--|--|-------------|-------------|-------------|-------------|
| GoT Name | Detailed description | 2x collector | 3 collector | 4 collector | 5 collector | 6 collector |
| FK8253N 4H | Solar thermal collector | 2 | 3 | 4 | 5 | 6 |
| | Required mounting levels for STANDARD Load (see installation manual) | 3 | 4 | 5 | 6 | 7 |
| TRPN1 | Support rail for 1 collector portrait | | 1 | | 1 | |
| TRPN2 | Support rail for 2 collector portrait | 1 | 1 | 2 | 2 | 3 |
| TRPL1 | Support rail for 1 collector horizontal | | | | | |
| VS | Support rail connecting bracket set | | 1 | 1 | 2 | 2 |
| DB0N2 | Roof bracket (hook) set for 2 panel installation | 1 | 1 | 1 | 1 | 1 |
| DB0N1 | Roof bracket (hook) extension set | | 1 | 2 | 3 | 4 |
| DB0L1 | Roof bracket set for landscape mounting | | | | | |
| DB0L1 ES | Roof bracket extension set for landscape mounting | | | | | |
| SS0N2 | Bold screw basic set | 1 | 1 | 1 | 1 | 1 |
| SS0N1 | Bold screw extension set | | 1 | 2 | 3 | 4 |
| SS0L1 | Bold screw set for landscape mounting | | | | | |
| SS0L1 ES | Bold screw extension set for landscape mounting | | | | | |
| SS45N2 | Bold screw A-frame 45 degree basic set | 1 | 1 | 1 | 1 | 1 |
| SS45N1 | Bold screw A-frame 45 degree extension set | | 1 | 2 | 3 | 4 |
| SS45L1 | Bold screw A-frame 45 degree set for landscape mounting | | | | | |
| SS45L1 ES | Bold screw A-frame 45 degree extension set for landscape mounting | | | | | |
| | Fittings | | | | | |
| RE | Roof entering set (2x 700mm flexible pipes with insulation) | 1 | 1 | 1 | 1 | 1 |
| GS | Compression basic set for 2 panels | 1 | 1 | 1 | 1 | 1 |
| ES | Compression extension set | | 1 | 2 | 3 | 4 |
| GS landscape | Compression basic set for landscape mounting (1x Insulated corrugated tube; length 390 mm) | | | | | |
| ES landscape | Compression extension set for landscape mounting (1x Insulated corrugated tube; length 390 mm) | | | | | |
| | Flashing sets - for vertical (portrait mounting only) | | | | | |
| BS | Flashing basic set for 2 panels | 1 | 1 | 1 | 1 | 1 |
| ES | Flashing extenshin set | | 1 | 2 | 3 | 4 |

| FK8253N 4H (2.5sqm) - horizontal (landscape) mounting | | | | | |
|---|--------------|-------------|-------------|-------------|-------------|
| 1x collector | 2x collector | 3 collector | 4 collector | 5 collector | 6 collector |
| 1 | 2 | 3 | 4 | 5 | 6 |
| 2 | 3 | 4 | 7 | 8 | 10 |
| | | | | | |
| 1 | 2 | 3 | 4 | 5 | 6 |
| | 1 | 2 | 3 | 4 | 5 |
| | | | | | |
| 1 | 1 | 1 | 1 | 1 | 1 |
| | 1 | 2 | 3 | 4 | 5 |
| | | | | | |
| 1 | 1 | 1 | 1 | 1 | 1 |
| | 1 | 2 | 3 | 4 | 5 |
| | | | | | |
| 1 | 1 | 1 | 1 | 1 | 1 |
| | 1 | 2 | 3 | 4 | 5 |
| | | | | | |
| 1 | 1 | 1 | 1 | 1 | 1 |
| | | 1 | 2 | 3 | 4 |
| | | | | | |
| | 1 | 1 | 1 | 1 | 1 |
| 1 | | 1 | 2 | 3 | 4 |
| | | | | | |
| | | | | | |

SUPPORT RAIL

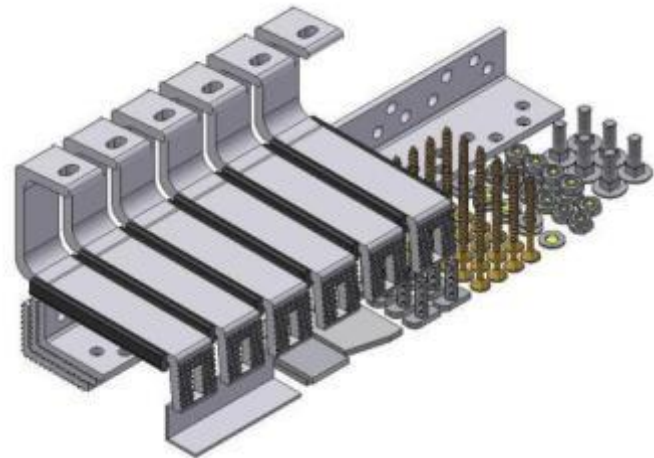
- **TRPN1:**
2 x support rail vertical collector
length fits for one collector
- **TRPN2:**
2 x support rail vertical collector
length fits for two collectors
- **TRPL1:**
2 x support rail horizontal collector
length fits for one collector



ROOF BRACKET 0° DB0 VERTICAL

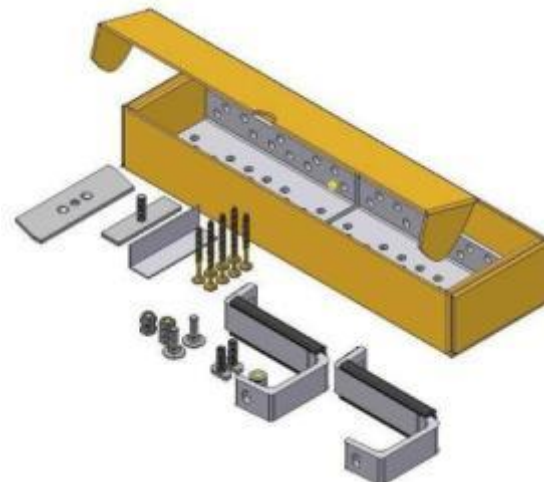
DB0N2 (Basic Set vertical mounting):

- 6 x roof bracket (incl. lay on rubber)
 - 6 x roof bracket console
 - 24 x Self-tapping screw 6x60
 - 9 x Hammer head bolt M8x25
 - 6 x Cup square bolt M8x25
 - 9 x Washer M8
 - 13 x Hex Nut M8 (thereof 4 x self-securing)
 - 1 x Clamping Piece
 - 2 x Mounting part, top
 - 1 x Mounting jig
 - 2 x Mounting instruction
- Delivery in carton; small parts in PE-bag



DB0N1 (Extension Set vertical mounting):

- 2 x roof bracket (incl. lay on rubber)
 - 2 x roof bracket console
 - 8 x Self-tapping screw 6x60
 - 2 x Hammer head bolt M8x25
 - 2 x Cup square bolt M8x25
 - 7 x Washer M8
 - 9 x Hex Nut M8 (thereof 4 x self-securing)
 - 1 x Clamping piece
 - 1 x Mounting part, extension
 - 1 x Mounting jig
- Delivery in carton; small parts in PE-bag



ROOF BRACKET 0° DB0 HORIZONTAL

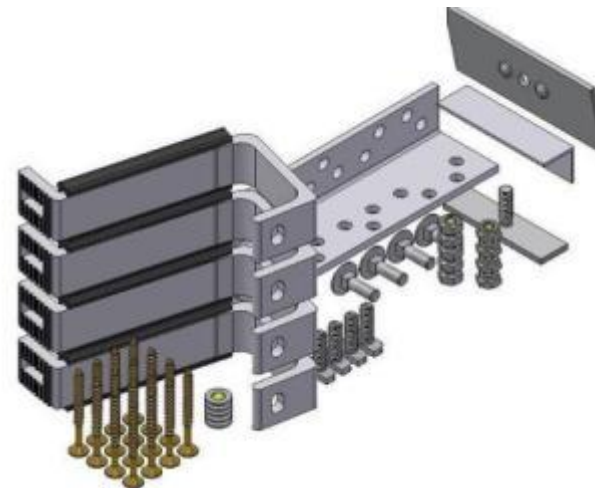
DB0L1 (Basic Set horizontal mounting):

- 4 x roof bracket (incl. lay on rubber)
- 4 x roof bracket console
- 16 x Self-tapping screw 6x60
- 6 x Hammer head bolt M8x25
- 4 x Cup square bolt M8x25
- 6 x Washer M8
- 10 x Hex Nut M8 (thereof 4 x self-securing)
- 2 x Mounting part, top
- 2 x Mounting Instruction
- Delivery in carton; small parts in PE-bag



DB0L1 ES (Extension Set horizontal mounting):

- 4 x roof bracket (incl. lay on rubber)
- 4 x roof bracket console
- 16 x Self-tapping screw 6x60
- 4 x Hammer head bolt M8x25
- 4 x Cup square bolt M8x25
- 5 x Washer M8
- 9 x Hex Nut M8 (thereof 4 x self-securing)
- 1 x Clamping piece
- 1 x Mounting part, extension
- 1 x Mounting jig
- Delivery in carton; small parts in PE-bag



BENCH SCREW SET 0° (SS0) VERTICAL

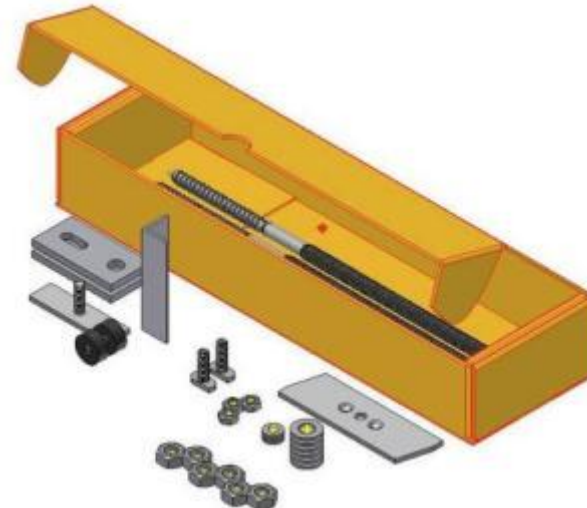
SS0N2 (Basic Set vertical mounting):

- 6 x Bench screw M12
 - 6 x Mounting part
 - 6 x Rubber seal M12
 - 18 x Washer M12
 - 18 x Hex nut M12
 - 9 x Hammer head bolt M8x25
 - 9 x Washer M8
 - 9 x Hex nut M8
 - 1 x Clamping piece
 - 2 x Mounting part, top
 - 1 x Mounting jig
 - 2 x Mounting instruction
- Delivery in carton; small parts in PE-bag



SS0N1 (Extension Set vertical mounting):

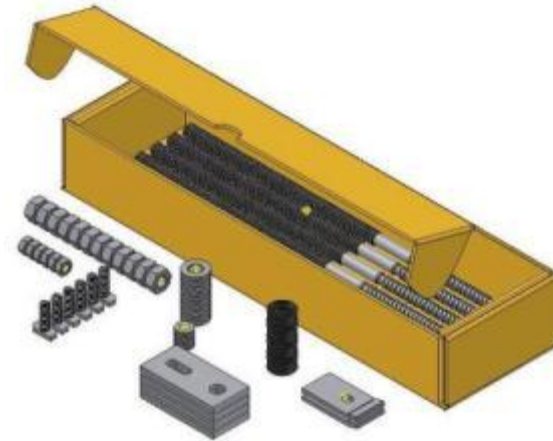
- 2 x Bench screw M12
 - 2 x Mounting part
 - 2 x Rubber seal M12
 - 6 x Washer M12
 - 6 x Hex nut M12
 - 2 x Hammer head bolt M8x25
 - 3 x Washer M8
 - 3 x Hex nut M8
 - 1 x Clamping piece
 - 1 x Mounting part, extension
 - 1 x Mounting jig
- Delivery in carton; small parts in PE-bag



BENCH SCREW SET 0° (SS0) HORIZONTAL

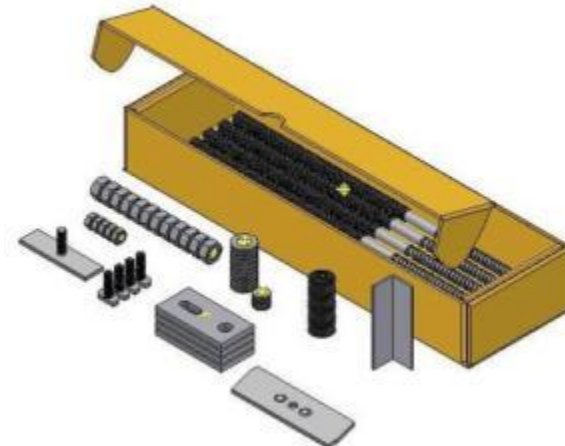
SS0L1 (Basic Set horizontal mounting):

- 4 x Bench screw M12
 - 4 x Mounting part
 - 4 x Rubber seal M12
 - 12 x Washer M12
 - 12 x Hex nut M12
 - 6 x Hammer head bolt M8x25
 - 6 x Washer M8
 - 6 x Hex nut M8
 - 2 x Mounting part, top
 - 1 x Mounting jig
 - 2 x Mounting instruction
- Delivery in carton; small parts in PE-bag



SS0L1 ES (Extension Set horizontal mounting):

- 4 x Bench screw
 - 4 x Mounting part
 - 4 x Rubber seal M12
 - 12 x Washer M12
 - 12 x Hex nut M12
 - 4 x Hammer head bolt M8x25
 - 5 x Washer M8
 - 5 x Hex nut M8
 - 1 x Clamping piece
 - 1 x Mounting part, extension
 - 1 x Mounting jig
- Delivery in carton; small parts in PE-bag



BENCH SCREW SET 45° (SS45) VERTICAL

SS45N2 (Basic Set vertical mounting):

- | | |
|----------------------------|---|
| 3 x Base bracket | 2 x Mounting part, top |
| 3 x Support bracket | 1 x Clamping piece |
| 6 x Attachment bracket | 1 x Mounting jig |
| 6 x Bench screw M12 | 2 x Mounting instruction |
| 6 x Rubber seal M12 | Delivery in carton; small parts in PE-bag |
| 18 x Washer M12 | |
| 18 x Hex nut M12 | |
| 9 x Hammer head bolt M8x25 | |
| 9 x Hex bolt M8x25 | |
| 18 x Washer M8 | |
| 18 x Hex nut M8 | |



SS45N1 (Extension Set vertical mounting):

- | | |
|----------------------------|---|
| 1 x Base bracket | 1 x Clamping piece |
| 1 x Support bracket | 1 x Mounting part, extension |
| 2 x Attachment bracket | 1 x Mounting jig |
| 2 x Bench screw M12 | Delivery in carton; small parts in PE-bag |
| 2 x Rubber seal M12 | |
| 6 x Washer M12 | |
| 6 x Hex nut M12 | |
| 2 x Hammer head bolt M8x25 | |
| 3 x Hex bolt M8x25 | |
| 6 x Washer M8 | |
| 6 x Hex Nut M8 | |



BENCH SCREW SET 45° (SS45) HORIZONTAL

SS45L1 (Basic Set horizontal mounting):

- | | |
|----------------------------|---|
| 2 x Base bracket | 2 x Mounting part, top |
| 2 x Support bracket | 2 x Mounting instruction |
| 4 x Attachment bracket | Delivery in carton; small parts in PE-bag |
| 4 x Bench Screw M12 | |
| 4 x Rubber Seal M12 | |
| 12 x Washer M12 | |
| 12 x Hex nut M12 | |
| 6 x Hammer head bolt M8x25 | |
| 6 x Hex bolt M8x25 | |
| 12 x Washer M8 | |
| 12 x Hex nut M8 | |



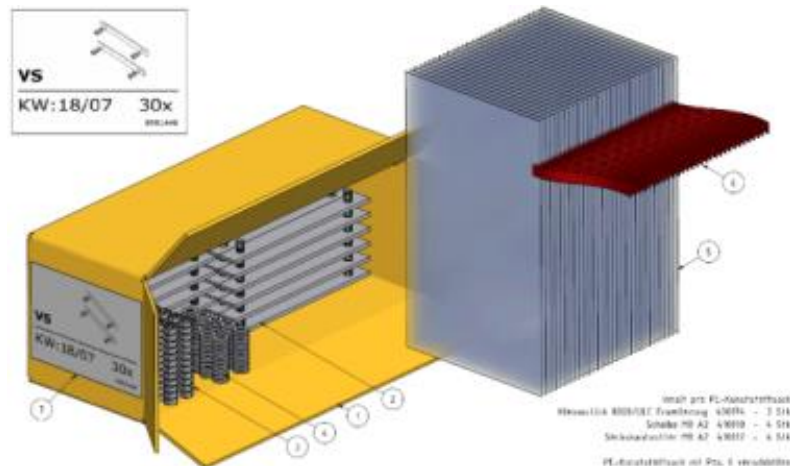
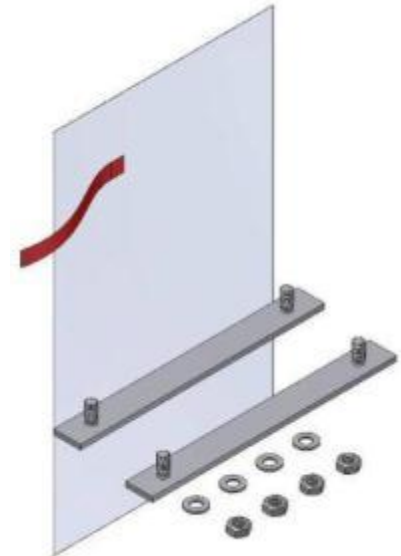
SS45L1 ES (Extension Set horizontal mounting):

- | | |
|----------------------------|---|
| 2 x Base bracket | 1 x Clamping piece |
| 2 x Support bracket | 1 x Mounting part, extension |
| 4 x Attachment bracket | 1 x Mounting jig |
| 4 x Bench bcrew M12 | Delivery in carton; small parts in PE-bag |
| 4 x Rubber beal M12 | |
| 12 x Washer M12 | |
| 12 x Hex nut M12 | |
| 4 x Hammer head bolt M8x25 | |
| 6 x Hex bolt M8x25 | |
| 11 x Washer M8 | |
| 11 x Hex nut M8 | |

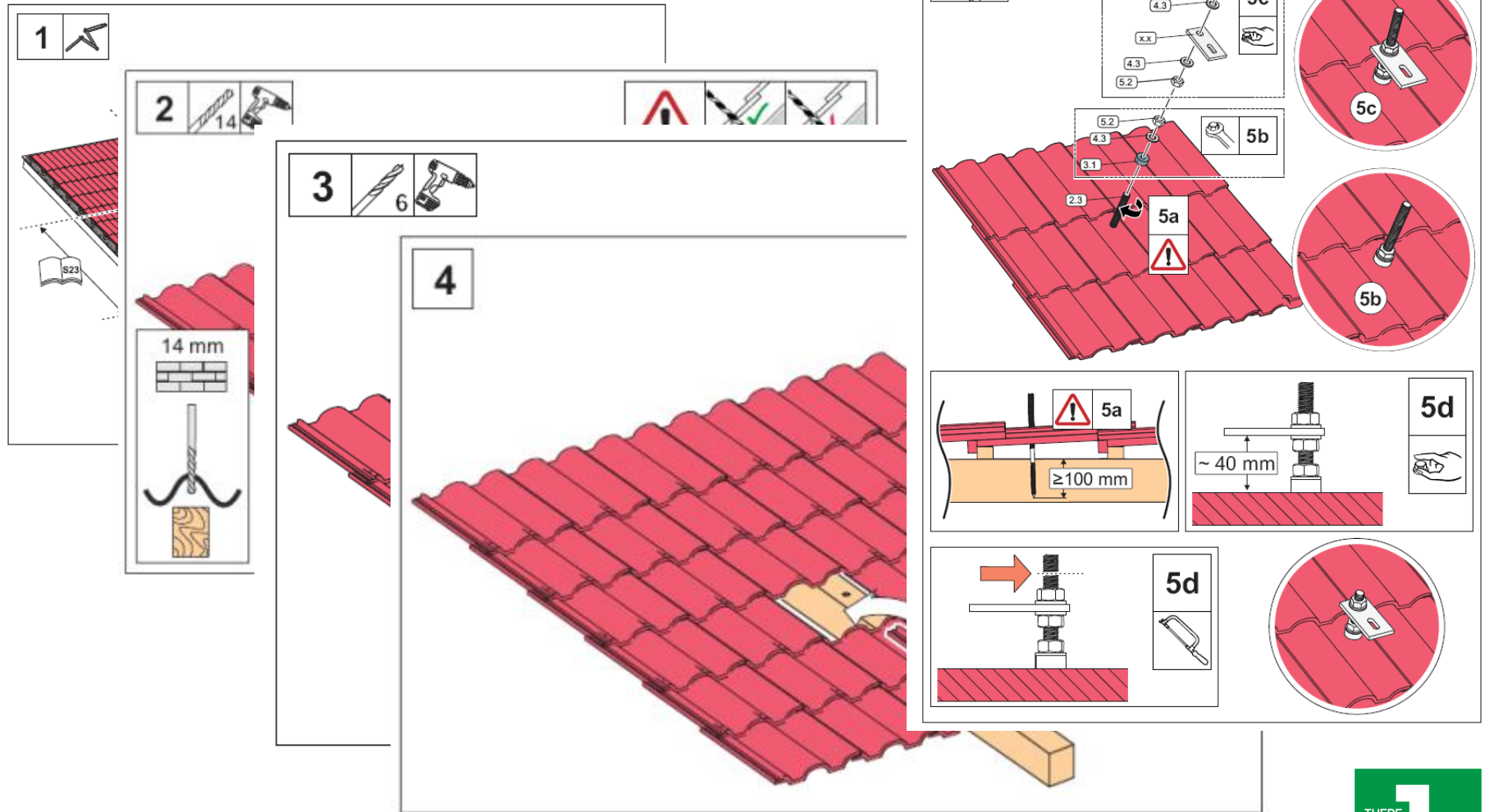


CONNECTING SET

- Connecting Set (necessary to combine the support rail):
 - 2 x Clamping piece extension
 - 4 x Washer M8
 - 4 x Hex nut M8
 - all parts in PE-bag
- Delivery: 30 pcs. connecting sets in carton



EXAMPLE FOR MOUNTING INSTRUCTION



CONNECTION-SETS VERTICAL

Connection (compression) basic set vertical:

- 4 x Straight compression coupling
- 1 x Blanking coupling
- 2 x Stop end piece
- 1 x Air vent connector
- 1 x Air vent piece
- 1 x Air vent - Key



Connection (compression) extension set vertical:

- 2 x Straight compression couplings
- 1 x Blanking coupling



CONNECTION-SETS HORIZONTAL

Connection Basic Set horizontal:

- 1 x Insulated corrugated tube; length 390 mm
- 2 x Stop end piece
- 2 x Air vent connector
- 2 x Air vent piece
- 2 x Adapter piece 22/ 1" flat seal
- 2 x Flat seals
- 1 x Air vent – Key



Connection Extension Set horizontal :

- 1 x Insulated corrugated tube; length 390 mm
- 1 x Stop end piece
- 1 x Air vent connector
- 1 x Air vent piece
- 2 x Adapter piece 22/ 1" flat seal
- 2 x Flat seals
- 1 x Air Vent – Key



ROOF ENTERING SET

Adapter piece for flat sealing and compression parts

2 x Insulated corrugated tube with 1" coupling nut on both sides 700mm

4 x flat seals

2 x compression adapter piece 22/ 1" flat seal



IN – ROOF SET

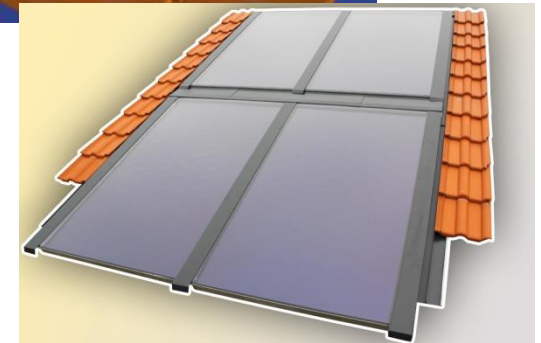
- **Metal Sheet cladding** (colour RAL 7016):

- Basic Set for 2 collectors (vertical)
- Extension Set for 1 collector (vertical)
- Basic Set for 2 collectors in 2nd row (vertical)
- Extension Set for 1 collector in 2nd row (vertical)



- **Following parts are included in the Metal Sheet cladding basic set 2 for collectors:**

- 2 x 90 (elbow) compression parts
- All collector roof mounting parts (e.g. rail)
- Mounting instruction (installation manual)



- **Connection Set have to be ordered according number of collectors:**

- 1 x Basic Set vertical for 2 collectors
- Number of extension sets vertical = number of additional collectors

OVERVIEW MOUNTING SETS

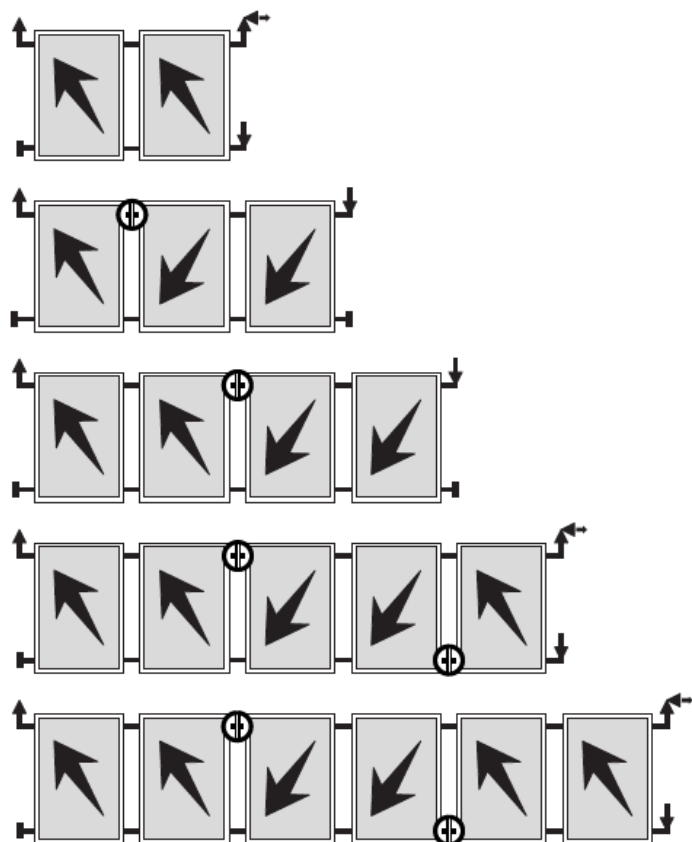
| Mounting Set | Packaging Unit (PU) | Packaging Dimension (L/W/H) in mm | Weight per PU in kg | Minimum Order Quantity |
|------------------------------------|---------------------|-----------------------------------|---------------------|------------------------|
| DB0N1 | 1 | 422 x 134 68 | 1,55 | 10 |
| DB0N2 | 1 | 422 x 134 x 68 | 4,06 | 10 |
| DB0L1 | 1 | 412 x 162 x 162 | 2,72 | 10 |
| DB0L1 ES | 1 | 412 x 162 x 162 | 2,81 | 10 |
| SS0N1 | 1 | 422 x 134 x 68 | 1,32 | 10 |
| SS0N2 | 1 | 422 x 134 x 68 | 3,26 | 10 |
| SS0L1 | 1 | 422 x 134 x 68 | 2,14 | 10 |
| SS0L1 ES | 1 | 422 x 134 x 68 | 2,31 | 10 |
| SS45N1 | 1 | 1674 x 144 x 90 | 3,90 | 10 |
| SS45N2 | 1 | 1674 x 144 x 90 | 10,27 | 10 |
| SS45L1 | 1 | 1512 x 132 x 70 | 4,93 | 10 |
| SS45L1 ES | 1 | 1512 x 132 x 70 | 5,32 | 10 |
| VS | 30 | 400 x 150 x 150 | 10,22 | 1 |
| TRP N 1 | 1 | 1225 x 80 x 40 | 2,91 | 18 |
| TRP N 2 | 1 | 2453 x 80 x 40 | 5,84 | 18 |
| TRP L1 | 1 | 2205 x 80 x 40 | 5,25 | 18 |
| Metal Sheet Flashing BS single row | 1 | 2200 x 880 x 150 | 34,5 | 1 |
| Metal Sheet Flashing ES single row | 1 | 2200 x 880 x 150 | 17,5 | 1 |
| Metal Sheet Flashing BS double row | 1 | 2200 x 270 x 150 | 25,0 | 1 |
| Metal Sheet Flashing ES double row | 1 | 2200 x 270 x 150 | 14,0 | 1 |

OVERVIEW Connection Sets

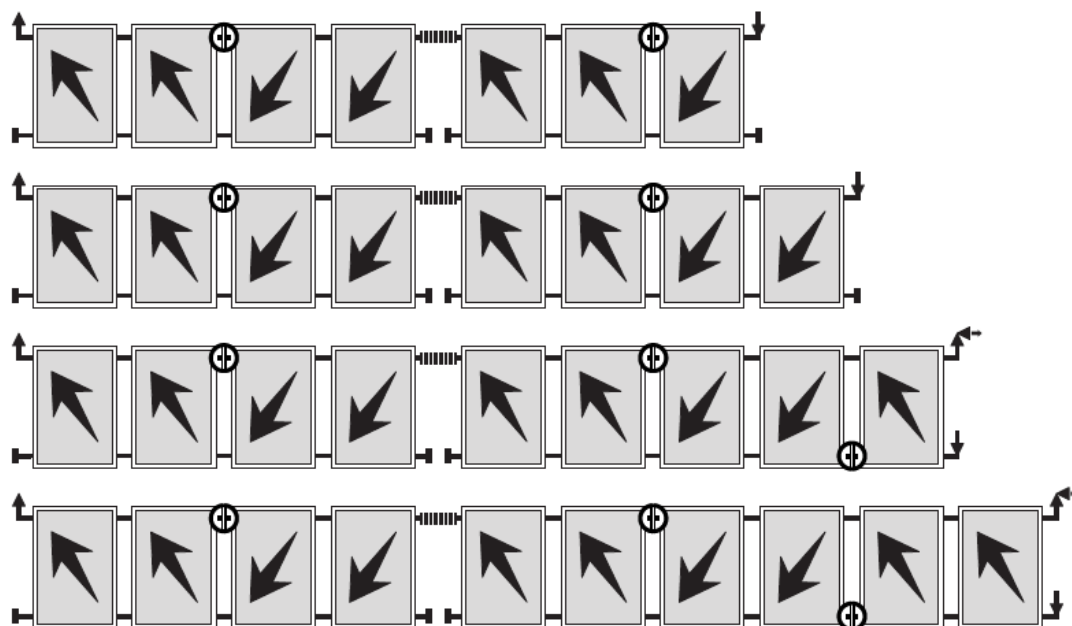
| Connection Set | Packaging Unit (PU) | Packaging Dimension (L/W/H) in mm | Weight per PU in kg | Minimum Order Quantity |
|--------------------------|---------------------|-----------------------------------|---------------------|------------------------|
| Basic Set vertical | 1 | 250 x 130 x 60 | 1,02 | 10 |
| Extension Set vertical | 1 | 250 x 130 x 60 | 0,5 | 10 |
| Basic Set horizontal | 1 | 250 x 130 x 60 | 1,3 | 10 |
| Extension Set horizontal | 1 | 250 x 130 x 60 | 0,8 | 10 |
| Roof Entering Set | 1 | 1500 x 120 x 60 | 1,61 | 10 |

CONNECTION SCHEME SINGLE ROW (VERTICAL) EXAMPLE

2 – 6 collectors



7 – 10 collectors



Legend:

⊕Locking valve

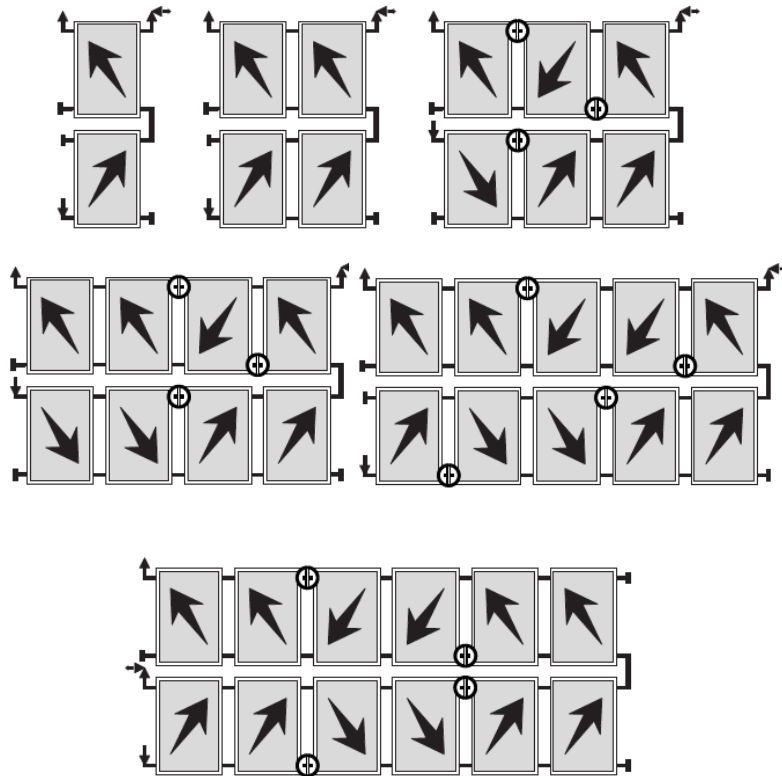
⊠Exhauster

.....Length compensator
or expansion bend

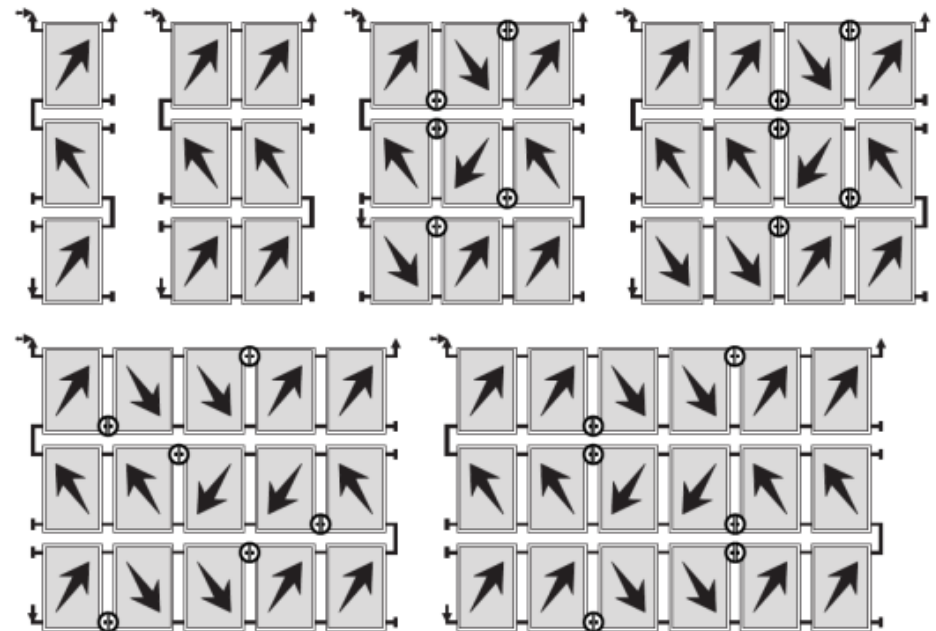
.....Flow direction

CONNECTION SCHEME DOUBLE-/TRIPLE ROW (VERTICAL) EXAMPLE

Two rows on top of each other



Three rows on top of each other



Legend:

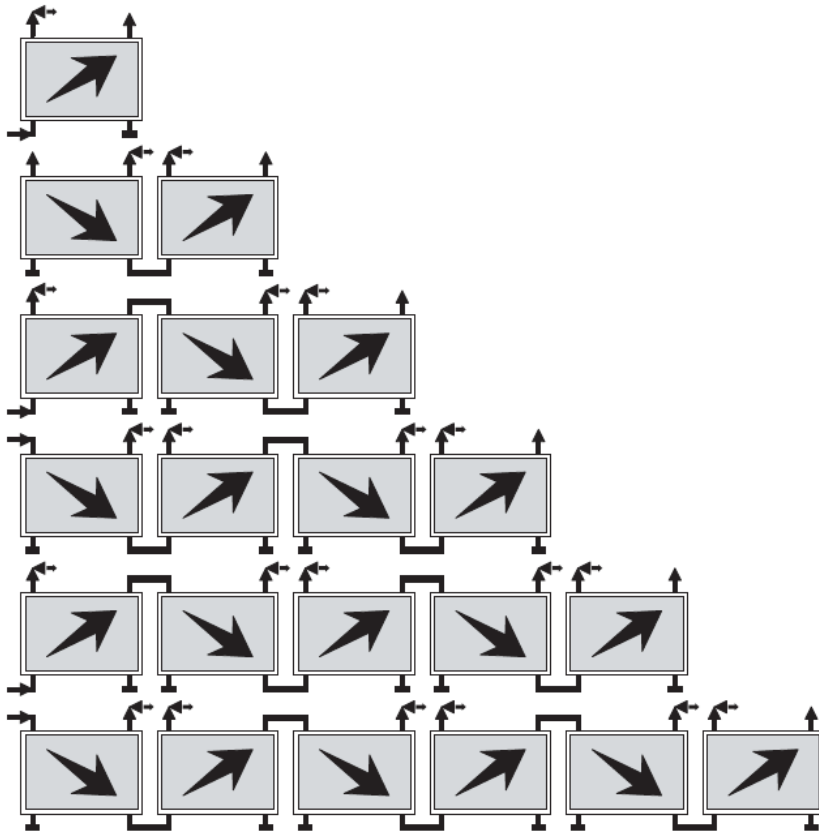
⊕Locking valve

.....Exhauster

.....Length compensator
or expansion bend
.....Flow direction

CONNECTION SCHEME SINGLE ROW (HORIZONTAL) EXAMPLE

2 – 6 collectors



Legend:

⊕ Locking valve

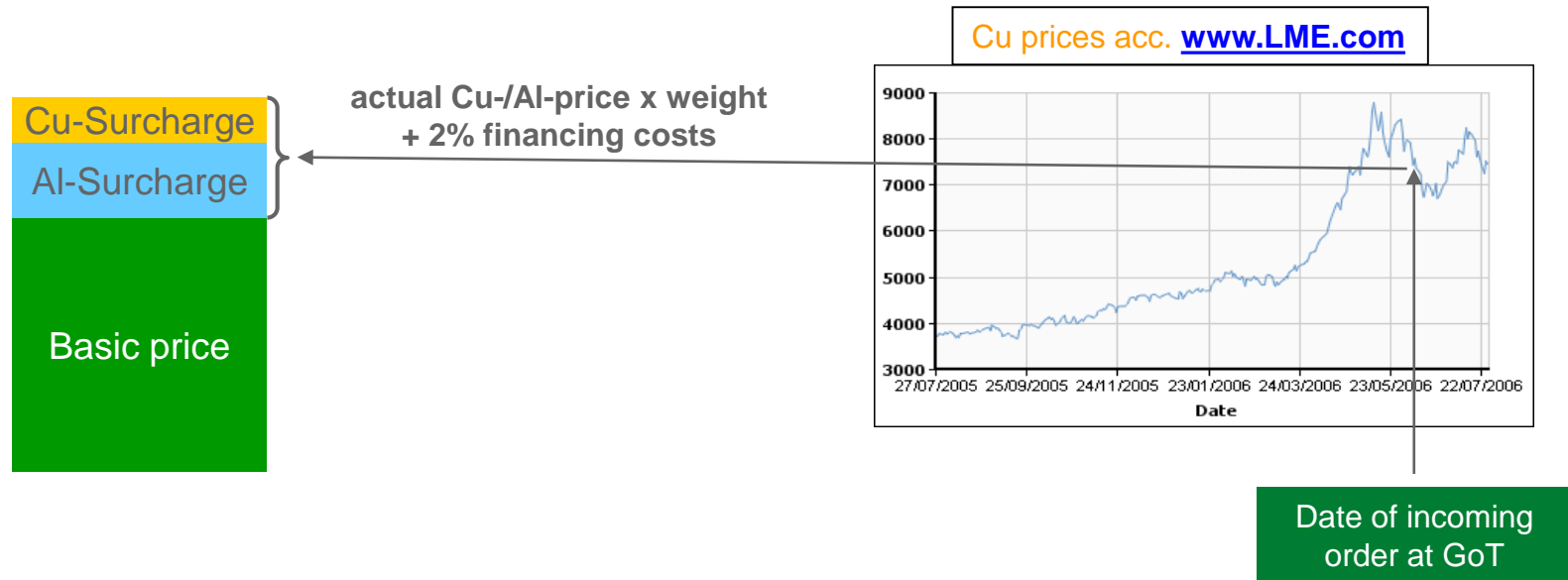
..... Exhauster

..... Length compensator
or expansion bend

..... Flow direction

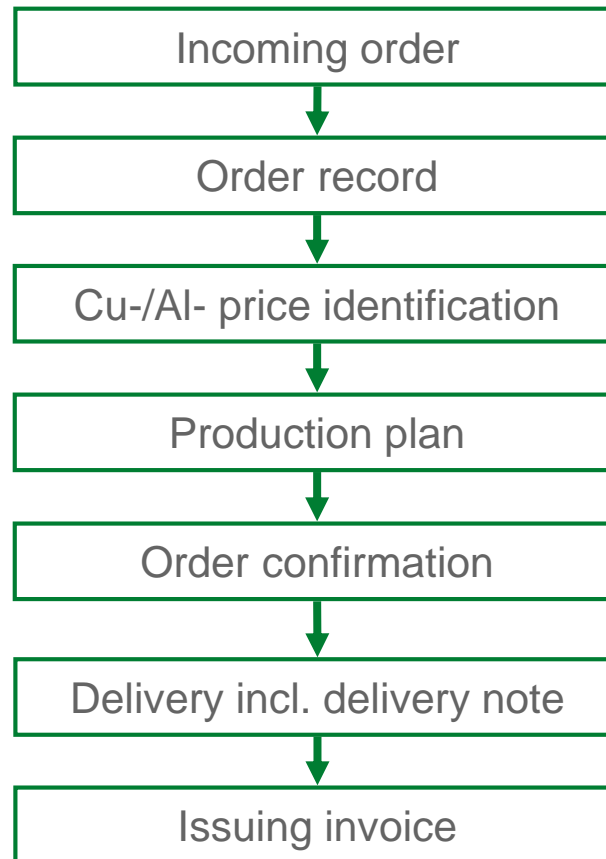
PRODUCT PRICES

- Product price = basic price + actual Al-/Cu- Surcharge



- Fair and transparent price
- Opportunity of fixed prices based on frame orders
- Customer knows exact price with order confirmation

ORDER PROCESS AT GREENONETEC



DANKE FÜR IHRE AUFMERKSAMKEIT
THANK YOU FOR YOUR ATTENTION



GREENoneTEC Solarindustrie GmbH
Industriepark St. Veit, Energieplatz 1
9300 St. Veit/Glan
info@greenonetec.com
www.greenonetec.com