

G3 Plus

Anti-Glare Face & Fingerprint Time Attendance & Access Control Terminal



G3 Plus is the ZKTeco first "Anti- Glare Facial Recognition" biometric terminal, with the ultimate 168 IR sensors and the latest infrared illumination technology, G3 plus is able to process precise facial recognition under strong sunlight (up to 60,000 Lux). Along with the hardware update, the G3 plus also comes with the ZKTeco latest deep learning facial recognition algorithm, which offers a whole new user experience, even users with glasses, hat or other accessories, the G3 plus still offers a smooth recognition experience.

Features



Latest Facial 9.0 algorithm



Face Identification Operating under Strong Sunlight and Dark environment (0~60,000 lux. Illuminance)



Revolutionary SilkID Fingerprint Sensor



Outstanding Performance With Dry, Wet and Rough Fingers



Multiple Verification Modes: Face / Fingerprint / Card / Password



Build-in PoE



Multiple Communication Modes, Wi-Fi, TCP/IP, 3G, USB host

Specifications (G: GL Exclusive Feature)

Capacity

Fingerprints	5,000
Faces	3,000 (1:N) / 4,000 (1:1)
Cards (Optional)	10,000
Transactions	100,000

Communication

- TCP/IP
- USB Host
- Wiegand Output

Access Control Interface

- Lock Relay Output
- Alarm Output
- Exit Button
- Door Sensor
- External Bell

Hardware

- 1.2GHz High Speed CPU
- Memory 128MB RAM / 256MB Flash
- G SilkID Fingerprint Sensor
- G 168 Infrared Sensors

Standard Functions

- ID Card / Work Code / WDMS
- DST / SMS / Bell Schedule
- Attendance Status Auto-Switch
- Record Query / Photo ID
- Custom Wallpaper & Screen Saver

Special Functions

- G Precise facial recognition under strong sunlight (up to 60,000 Lux)
- G Latest ZKTeco Facial Recognition Algorithm, easy to recognize users wearing glasses and hat
- G Prevents repeated face registration

Optional Functions:

- HID Proxy / Mifare Card Reader
- Wi-Fi / 3G
- External Printer
- Battery (2,000 mAh)
- G PoE(Standard IEEE 802.3at)

Compatibility

- ZKTime.Web / Biotime 7.0
- ZKAccess 3.5
- WDMS

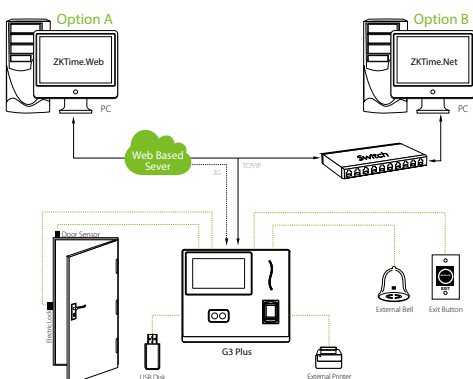
Additional Info

- Working Temperature: 0 °C ~ 45 °C
- Dimensions: 199.2 × 171.8 × 131.3 mm
- ZKFace v9.0 & ZKFinger v10.0 Algorithms
- Fingerprint: FAR≤0.0001% FRR≤0.01%
- Face: FAR≤0.001% FRR≤1%

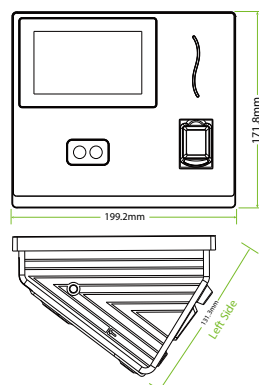
Power

- Operating Voltage 12V DC
- Current Draw < 500 mA

Configuration



Dimensions (mm)



ZKTECO CO.,LTD.
www.zkteco.com
E-mail: sales@zkteco.com



© Copyright 2017. ZKTECO CO.,LTD. ZKTeco Logo is a registered trademark of ZKTeco or a related company. All other product and company names mentioned are used for identification purposes only and may be the trademarks of their respective owners. All specifications are subject to change without notice. All rights reserved.