



EUROPEAN UNION
European Regional Development Fund
Operational Programme Enterprise
and Innovations for Competitiveness

B&BARTONI CONSUMABLE PARTS SUITABLE FOR

HIFOCUS 160i-161i®

B&BARTONI CONSUMABLE PARTS

B&Bartoni is a world-class manufacturer of plasma consumables with production solely in the Czech Republic, Europe.

Main advantage of the B&Bartoni brand is quality comparable to OEM manufacturers due to using identical materials, precise machinery and highly qualified staff.

B & B
BARTONI®
CONSUMABLEPARTS

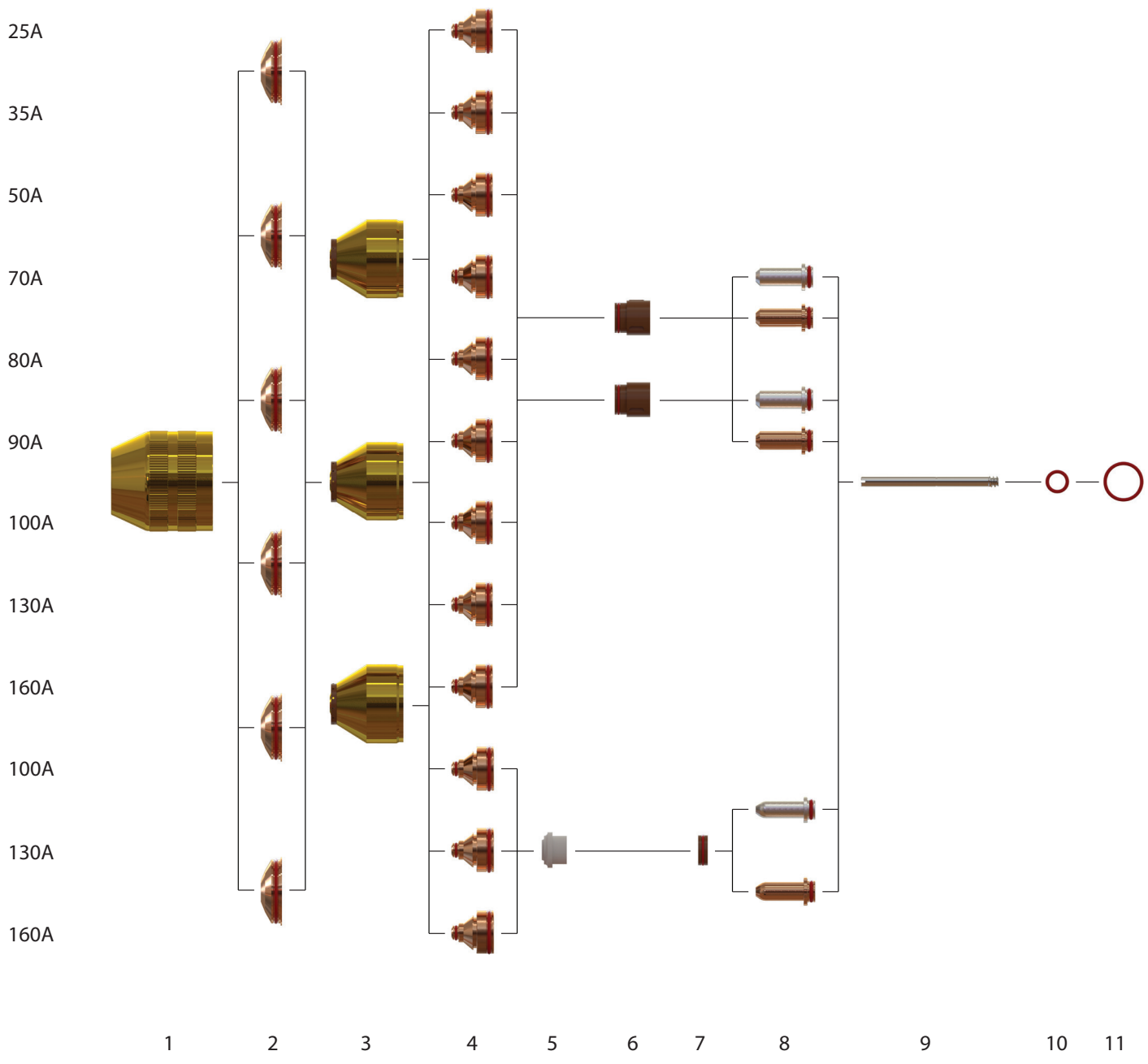
B&BARTONI, SPOL. S R. O.
DOUBRAVIČKA 18
294 30 DOLNÍ CETNO
CZECH REPUBLIC

TEL.: +420 326 335225
FAX: +420 326 335942
E-MAIL: INFO@B-BARTONI.CZ
WWW.B-BARTONI.CZ



EUROPEAN UNION
European Regional Development Fund
Operational Programme Enterprise
and Innovations for Competitiveness

B&BARTONI CONSUMABLE PARTS SUITABLE FOR HIFOCUS 160i-161i®





EUROPEAN UNION
European Regional Development Fund
Operational Programme Enterprise
and Innovations for Competitiveness

B&BARTONI CONSUMABLE PARTS SUITABLE FOR HIFOCUS 160i-161i®

ITEM	REF. NUMBER	ORDER NUMBER	DESCRIPTION
01.	B.11.835.201.081	BP-30401	Shield cap Z501
02.	B.11.835.201.1561	BP-30402	Shield Z4015 - ø 1,5mm
	B.11.835.201.1571	BP-30403	Shield Z4020 - ø 2,0mm
	B.11.835.201.1551	BP-30501	Shield Z4022 - ø 2,2mm
	B.11.835.201.1581	BP-30404	Shield Z4025 - ø 2,5mm
	B.11.835.201.1591	BP-30405	Shield Z4030 - ø 3,0mm
	B.11.835.401.1571	BP-30406	Shield Z4140 - ø 4,0mm
03.	B.11.842.401.160	BP-30502	Retaining cap S3004 - ø 0,4mm
04.	B.11.843.021.406	BP-30503	Nozzle S2006X - ø 0,6mm, 25A, O2
	B.11.843.021.407	BP-30504	Nozzle S2007X - ø 0,7mm, 35A, O2
	B.11.843.021.408	BP-30505	Nozzle S2008X - ø 0,8mm, 50A, O2
	B.11.843.021.409	BP-30506	Nozzle S2009X - ø 0,9mm, 70A, O2
	B.11.843.021.410	BP-30507	Nozzle S2010X - ø 1,0mm, 80A, O2
	B.11.843.021.411	BP-30508	Nozzle S2011X - ø 1,1mm, 90A, O2
	B.11.843.021.412	BP-30509	Nozzle S2012X - ø 1,2mm, 100A, O2
	B.11.843.021.414	BP-30510	Nozzle S2014X - ø 1,4mm, 130A, O2
	B.11.843.021.416	BP-30511	Nozzle S2016X - ø 1,6mm, 160A, O2
05.	B.11.835.221.153	BP-30415	Swirl ring Z101 - 3 holes (vespel®)
	B.11.835.221.154	BP-30512	Swirl ring Z102 - 2 holes (vespel®)
06.	B.11.843.021.310AG	BP-30513	Cathode S002X-XL O2 SILVER
	B.11.843.021.310SC	BP-30521	Cathode S002X-XL O2 SilverCore
	B.11.843.021.320AG	BP-30701	Cathode S002Y-XL O2 SILVER
	B.11.843.021.320SC	BP-30739	Cathode S002Y-XL O2 SilverCore
07.	B.11.842.401.162	BP-30514	Retaining cap S3008 - ø 0,8mm
	B.11.842.401.1622	BP-30515	Retaining cap S3028 - ø 0,8mm
08.	B.11.843.121.412	BP-30516	Nozzle S2112X - ø 1,2mm, 100A, O2
	B.11.843.121.414	BP-30517	Nozzle S2114X - ø 1,4mm, 130A, O2
	B.11.843.121.416	BP-30518	Nozzle S2116X - ø 1,6mm, 160A, O2
09.	B.11.834.321.153	BP-30208	Swirl ring Z111 - (vespel®)
10.	B.11.835.421.303	BP-30420	Spacer ring Z111A (vespel®)
11.	B.11.843.121.310AG	BP-30519	Cathode S012X-XL O2 SILVER
	B.11.843.121.310SC	BP-30522	Cathode S012-XL O2 SilverCore
12.	B.11.842.401.152	BP-30520	Cooling tube - PerCut 160
13.	B.10.575.052	BP-30109	O - ring 20x2 silicone
14.	B.10.505.946	BP-30423	O - ring 36x2 silicone



EUROPEAN UNION
European Regional Development Fund
Operational Programme Enterprise
and Innovations for Competitiveness

B&BARTONI CONSUMABLE PARTS SUITABLE FOR HIFOCUS 160i-161i®

GOALS OF B&BARTONI

Our goal is providing price competitive products while maintaining high quality.

Our aims are realized by:

- efficient use of the best input materials
- professional workforce
- technological background
- focus on innovation

WHY PURCHASE B&BARTONI CONSUMABLES?

- We provide free testing samples
- We help you to choose the right product
- B&Bartoni consumables are fully compatible with OEM parts and have comparable quality while reaching competitive prices
- Torch service and general repairs

B&Bartoni product range contains wide spectre of consumables from the most common OEM manufacturers as well as those rare ones. Please do not hesitate to inquire our sales representatives for availability to info@b-bartoni.cz or on the phone no. +420 326 335 225

ISO 9001:2009

KJELLBERG®, HIFOCUS 160i-161i® are the Registered Trademarks of KJELLBERG®. B&BARTONI, spol. s r.o. is in no way affiliated with KJELLBERG®. The parts advertised for sale are not genuine KJELLBERG® parts, but are parts made for and by B&BARTONI, spol. s r.o.. Reference to KJELLBERG® machine, torches and numbers are for your convenience only. We reserve the right to substitute genuine KJELLBERG® parts in place of B&BARTONI, spol. s r.o. parts. Parts indicated with a "OEM" are original parts manufactured by the above named manufacturer and are being resold by B&BARTONI, spol. s r.o.

**B&B
BARTONI®**
CONSUMABLEPARTS