

FEATURE

- 6mm / Single-Turn / Carbon
- Phenolic Base / Resin Mold
- Open Frame / PC Board Stand-offs
- Enclosed Cover

ELECTRICAL CHARACTERISTICS

Standard Resistance Range	10 to 1M ohms (see standard resistance table)
Resistance Tolerance	± 30%
Contact Resistance Variation	R<1K ohm: 30 ohm max. R>1K ohm: 3% max.
Resolution	Infinite
Rotational Angle	210 ° ± 20 °
Resistance Taper	Linear (B)

ENVIRONMENTAL CHARACTERISTICS

Power Rating	0.1W (at 50)
Max Operating Voltage	50V/DC (100-500K ohm) 25V/DC (>500K ohm)
Operating Temperature Range	-10 to +70
Rotational Life	20 ± 2 cycles

PHYSICAL CHARACTERISTICS

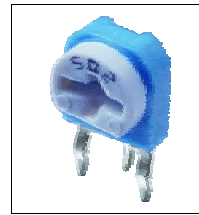
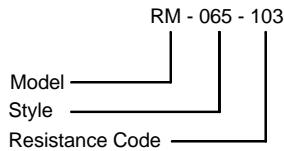
Rotational Torque	20-250 g-cm
Stop Strength	>350 g-cm
Terminals	Solderable pins
Marking	Resistance code

STANDARD RESISTANCE TABLE

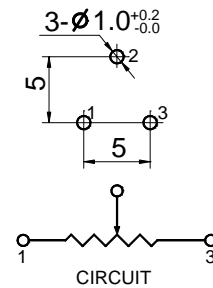
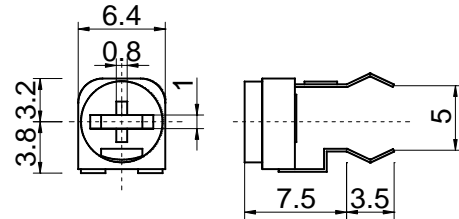
Resistance (Ohms)	Resistance Code	Resistance (Ohms)	Resistance Code
100	101	20,000	203
200	201	50,000	503
500	501	100,000	104
1,000	102	200,000	204
2,000	202	500,000	504
5,000	502	1,000,000	105
10,000	103		

Special resistance available

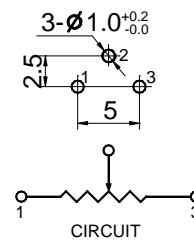
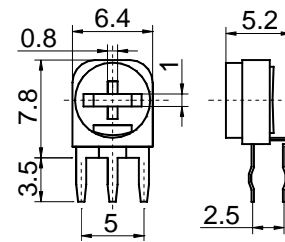
HOW TO ORDER



OUTLINE DIMENSIONS



RM065



RM063

Unit: mm Tolerance: ± 0.25 if not specified

RM065 Cross to Bourns 3318F
 RM063 Cross to Bourns 3318K