

# **VB342**

## **Video Soundbar**

**User Manual**



## Federal Communications Commission



NOTE: This equipment has been tested and found to comply with the limits for a Class A digital device, pursuant to part 15 of the FCC Rules. These limits are designed to provide reasonable protection against harmful interference when the equipment is operated in a commercial environment. This equipment generates, uses, and can radiate radiofrequency energy and, if not installed and used in accordance with the instruction manual, may cause harmful interference to radio communications. Operation of this equipment in a residential area is likely to cause harmful interference in which case the user will be required to correct the interference at his own expense.

**FCC Caution:** Any changes or modifications not expressly approved by the party responsible for compliance could void the user's authority to operate this equipment.

This device complies with part 15 of the FCC Rules.

Operation is subject to the following two conditions:

- (1) This device may not cause harmful interference, and
- (2) This device must accept any interference received, including interference that may cause undesired operation.

**Warning:** This is a class A product. In a domestic environment this product may cause radio interference in which case the user may be required to take adequate measures.

### **DISCLAIMER**

No warranty or representation, either expressed or implied, is made with respect to the contents of this documentation, its quality, performance, merchantability, or fitness for a particular purpose. Information presented in this documentation has been carefully checked for reliability; however, no responsibility is assumed for inaccuracies. The information contained in this documentation is subject to change without notice.

In no event will AVer Information Inc. be liable for direct, indirect, special, incidental, or consequential damages arising out of the use or inability to use this product or documentation, even if advised of the possibility of such damages.

## TRADEMARKS

“AVer” is a trademark owned by AVer Information Inc. Other trademarks used herein for description purpose only belong to each of their companies.

## COPYRIGHT

©2018 AVer Information Inc. All rights reserved.

All rights of this object belong to AVer Information Inc. Reproduced or transmitted in any form or by any means without the prior written permission of AVer Information Inc. is prohibited. All information or specifications are subject to change without prior notice.

## NOTICE

SPECIFICATIONS ARE SUBJECT TO CHANGE WITHOUT PRIOR NOTICE. THE INFORMATION CONTAINED HEREIN IS TO BE CONSIDERED FOR REFERENCE ONLY.

## WARNING

TO REDUCE RISK OF FIRE OR ELECTRIC SHOCK, DO NOT EXPOSE THIS APPLIANCE TO RAIN OR MOISTURE. WARRANTY WILL BE VOID IF ANY UNAUTHORIZED MODIFICATIONS ARE DONE TO THE PRODUCT.

### Remote Control Battery Safety Information

- Store batteries in a cool and dry place.
- Do not throw away used batteries in the trash. Properly dispose used batteries through specially approved disposal methods.
- Remove the batteries if they are not in use for long periods of time. Battery leakage and corrosion can damage the remote control. Dispose of batteries safely and through approved disposal methods.
- Do not use old batteries with new batteries.
- Do not mix and use different types of batteries: alkaline, standard (carbon-zinc) or rechargeable (nickel-cadmium).
- Do not dispose of batteries in a fire.
- Do not attempt to short circuit the battery terminals.

### Contact Information

#### Global

AVer Information Inc.  
[www.aver.com](http://www.aver.com)  
8F, No.157, Da-An Rd.,  
Tucheng Dist.,  
New Taipei City  
Taiwan  
Tel: +886-2-2269-8535  
Fax: +886-2-2269-8537

#### USA

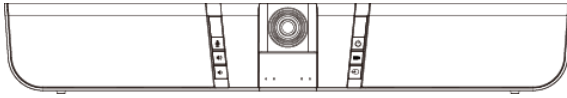
AVer Information Inc.  
668 Mission Ct  
Fremont, CA 94539  
[www.averusa.com](http://www.averusa.com)  
Toll-free: 1(877)528-7824  
Local: 1(408)263-3828  
Fax: 1(408)263-8132  
Fax(RMA): 1(408)263-3822  
Support.usa@aver.com

# Contents

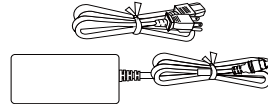
Package Contents .....	1
Product Introduction .....	2
Overview .....	2
Pan and Tilt Angle .....	3
Remote Controller .....	4
Remote Controller Battery .....	5
Setup VB342 .....	6
Device Connection .....	6
Wall Mount Installation .....	7
Use VB342 .....	9
Make a Video Call .....	9
LED Indicator .....	9
AVer PTZApp .....	10
Install AVer PTZApp .....	10
Use AVer PTZApp .....	10
Full Screen Mode .....	16

# Package Contents

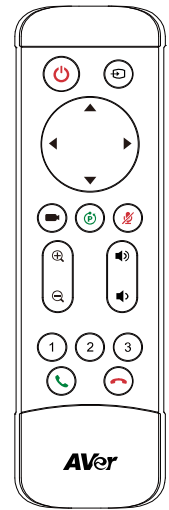
1



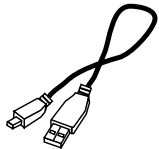
2



3



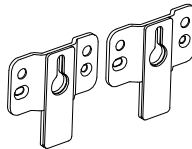
4



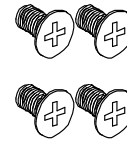
5



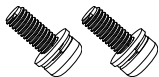
6



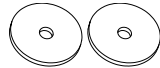
7



8



9



10



11

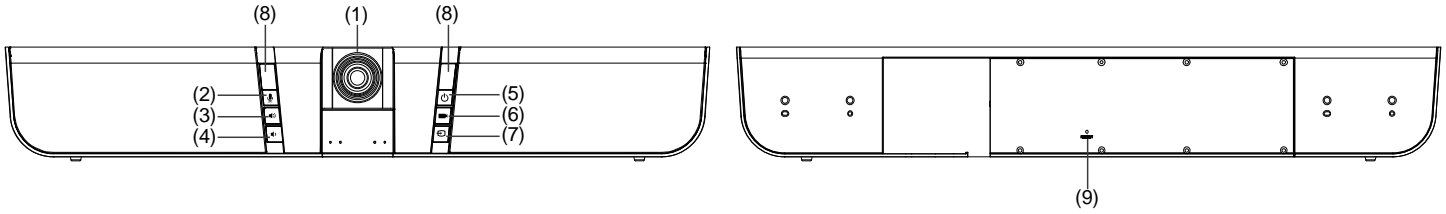


1. VB342 unit
2. Power plug\* & Power adapter
3. Remote Controller
4. USB cable
5. USB type-A to type-C adapter
6. Wall mount bracket
7. Screws(x4) for wall mount
8. Screws(x2) for TV mount
9. Mount rubbers(x 2)
10. Quick start guide
11. Warranty card(USA only)

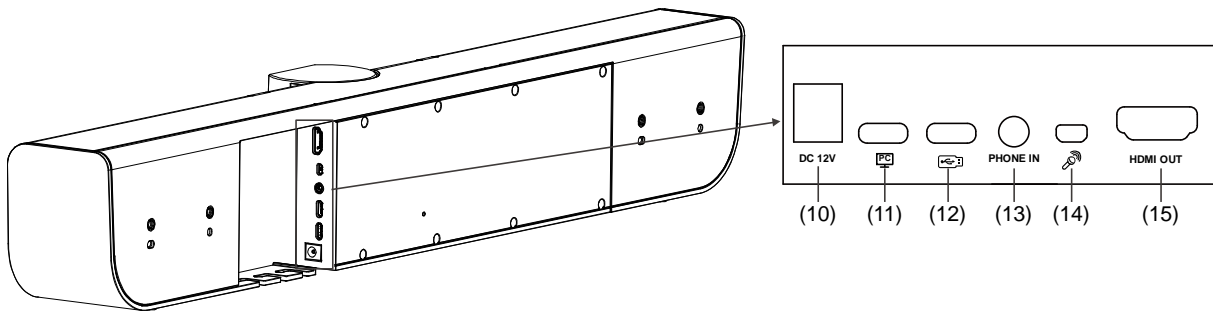
\*The power plug will vary depending on the standard power outlet of the country where it is sold.

# Product Introduction

## Overview

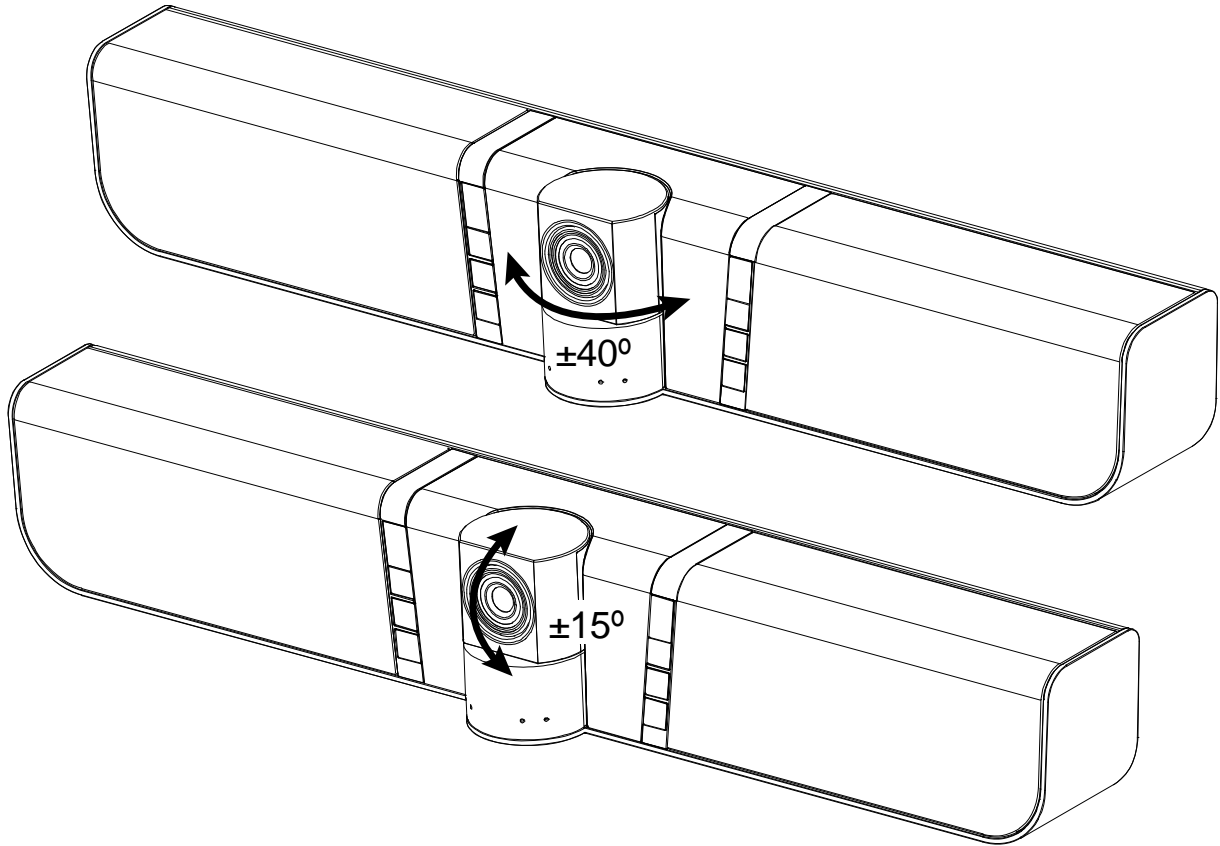


(1)	Camera	(6)	Preset
(2)	Mute	(7)	Audio In
(3)	Volume +	(8)	IR sensor
(4)	Volume -	(9)	Reset
(5)	Power		

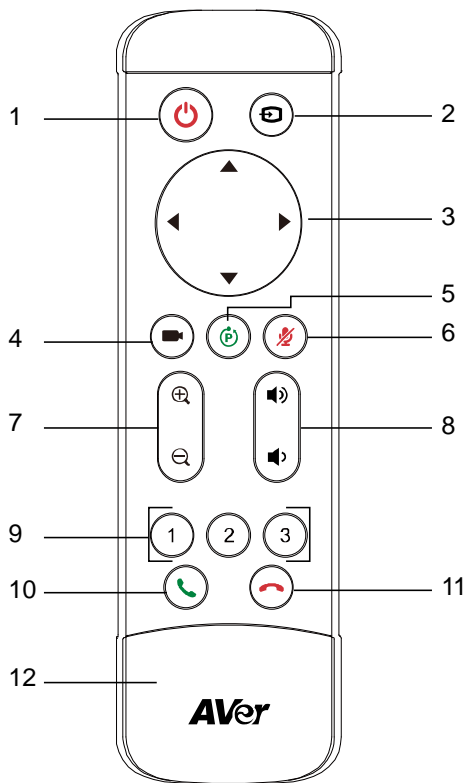


(10)	DC 12V Power Jack	(14)	MIC Input
(11)	USB port(to PC)	(15)	HDMI port
(12)	USB port	(13)	Phone In

## Pan and Tilt Angle



## Remote Controller



Button	Function
1. Power	Turn on/off the VB342 unit.
2. Audio input	Switch audio input sources.
3. Camera direction control	Use the direction button on the remote to control the direction of the camera. Press the direction button to move the camera or press and hold for continuous pan or tilt.
4. Preset position hot key	Press one time to go to preset 1 position; press two times for preset 2 position; and three times for preset 3 position.
5. Preset	<ul style="list-style-type: none"> <li>■ Press to get back to “home” position that user has set.</li> <li>■ Move camera to desired position. Press and hold the preset button until saved message is displayed on screen. Then, select preset position button 1~3 to save current camera position.</li> </ul>
6. Mute/Unmute Speakerphone	Mute/Unmute the speakerphone.
7. Zoom in/Zoom out	Increase/Decrease the camera zoom.
8. Volume up/down	Adjust volume up or down.
9. Preset position	<ul style="list-style-type: none"> <li>■ Press “Preset” button + “Preset position” button to set the preset position.</li> <li>■ Press the button to the preset position.</li> </ul>
10. Call/answer*	Answer a call or start a call.
11. Hang up*	End the call.
12. Battery compartment cover	Press (toward down) it to open for battery installation.

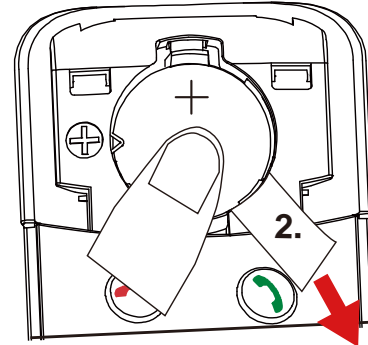
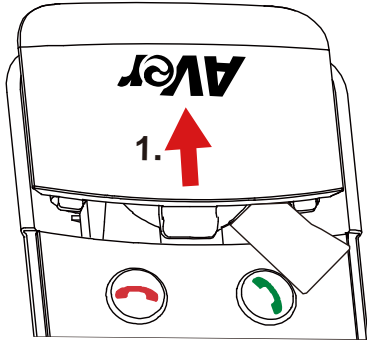
\* Function requires AVer PTZApp



## Remote Controller Battery

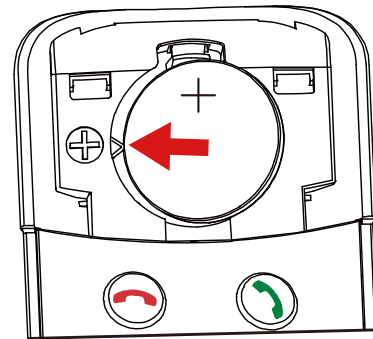
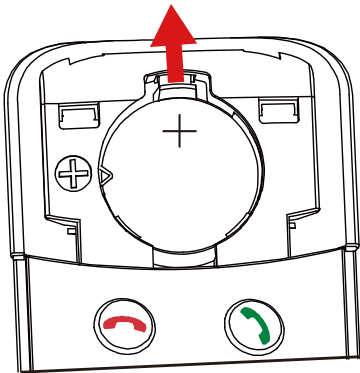
**[Note]** Remove the battery film tab before first use.

1. Push and press remote cover toward back end.
2. Lightly touch battery and completely pull out the film tab blocking the battery.



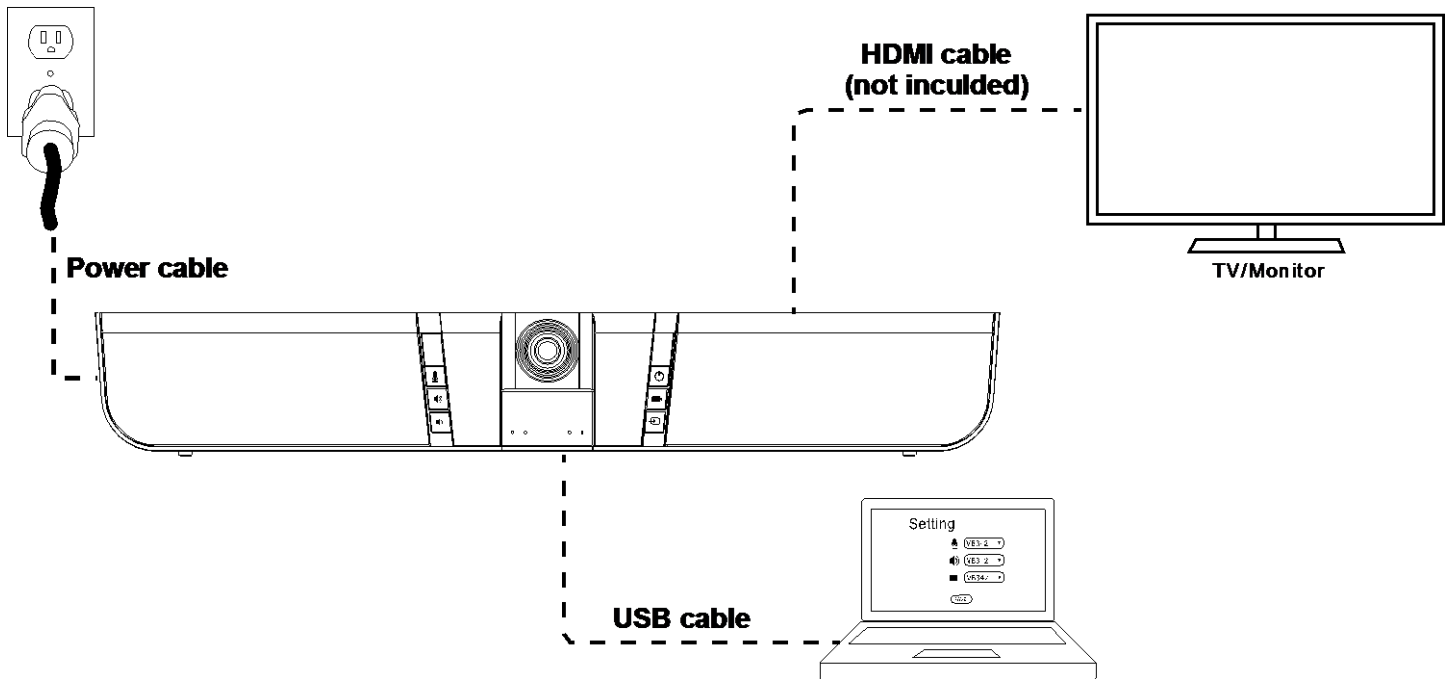
### To replace the battery.

1. Press clip holder toward back end to release the battery.
2. Place new CR2032 battery + side up under the triangle contact and clip.



# Setup VB342

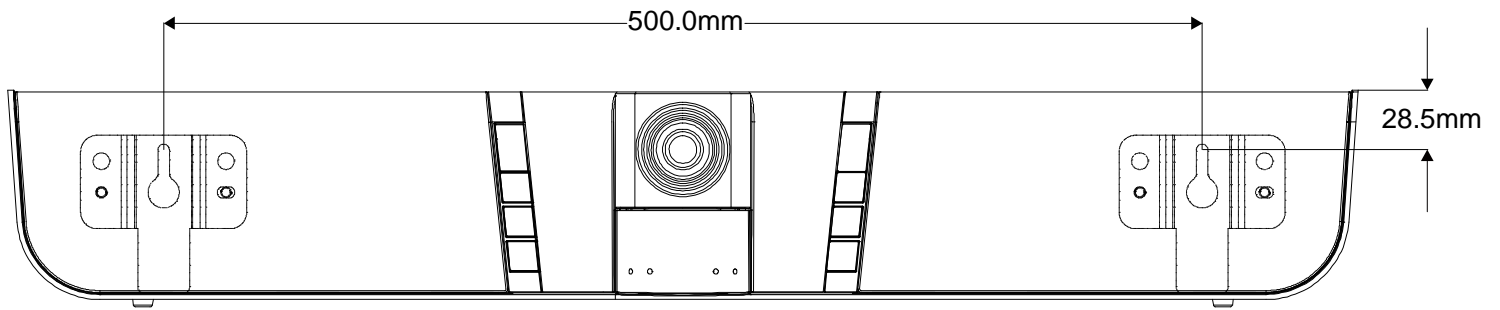
## Device Connection



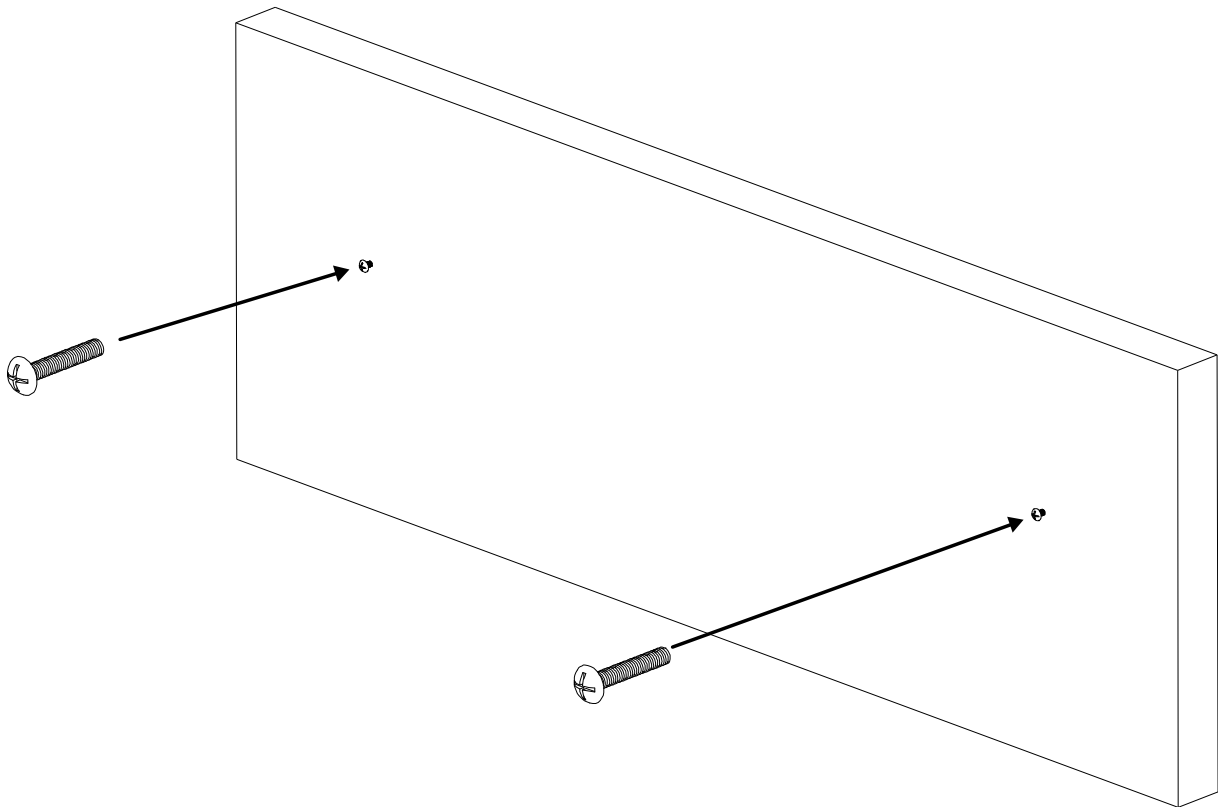
1. Connect VB342 to PC with provided USB cable. If you like to use type-C connector on newer PC, connect provided adapter to type-A end of cable, then connect type-C side of adapter to PC.
2. Connect the power to the VB342 and camera head will move, and the power indicator will light up.
3. Install Display Link driver on laptop/PC which is connected with VB342.
4. Install AVer PTZApp on laptop/PC that is connected with VB342. The app can be used to adjust and setup the parameters of the camera (refer to section of AVer PTZApp)
5. To make a call, run your video application (Skype™, Skype for Business, Google Hangouts™, Zoom™, Bluejeans, WebEx™, Adobe Connect™, WebRTC, and etc.) select VB342 as your video and audio device.

## Wall Mount Installation

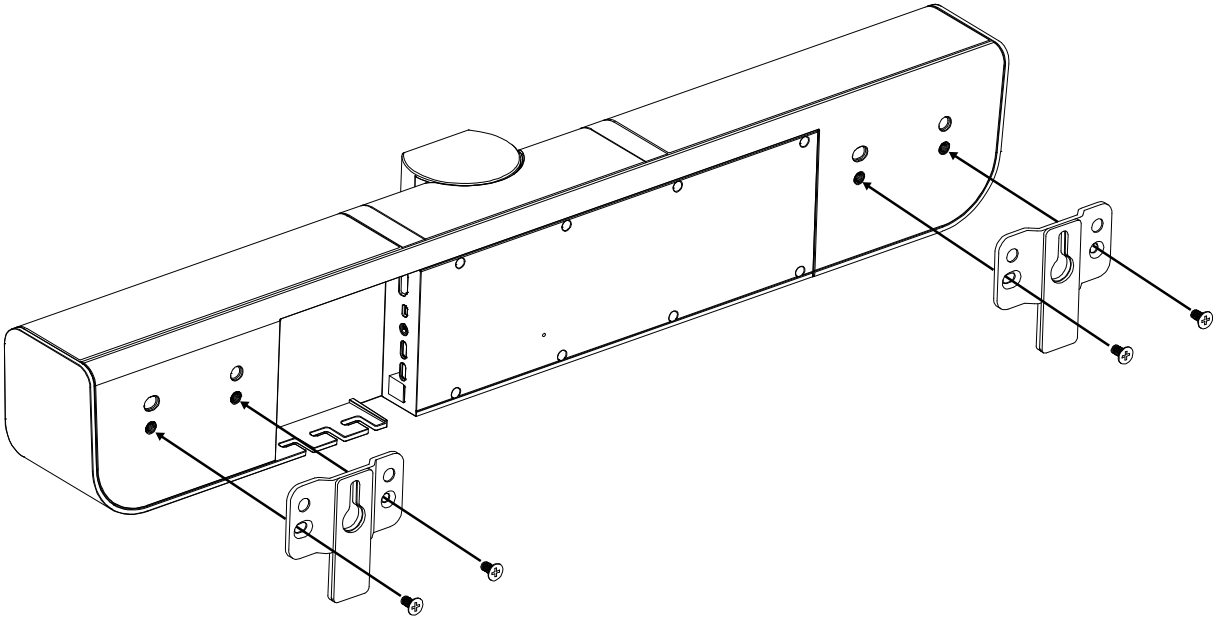
1. Please refer to the following drilling dimension for drilling the wall mount holes.



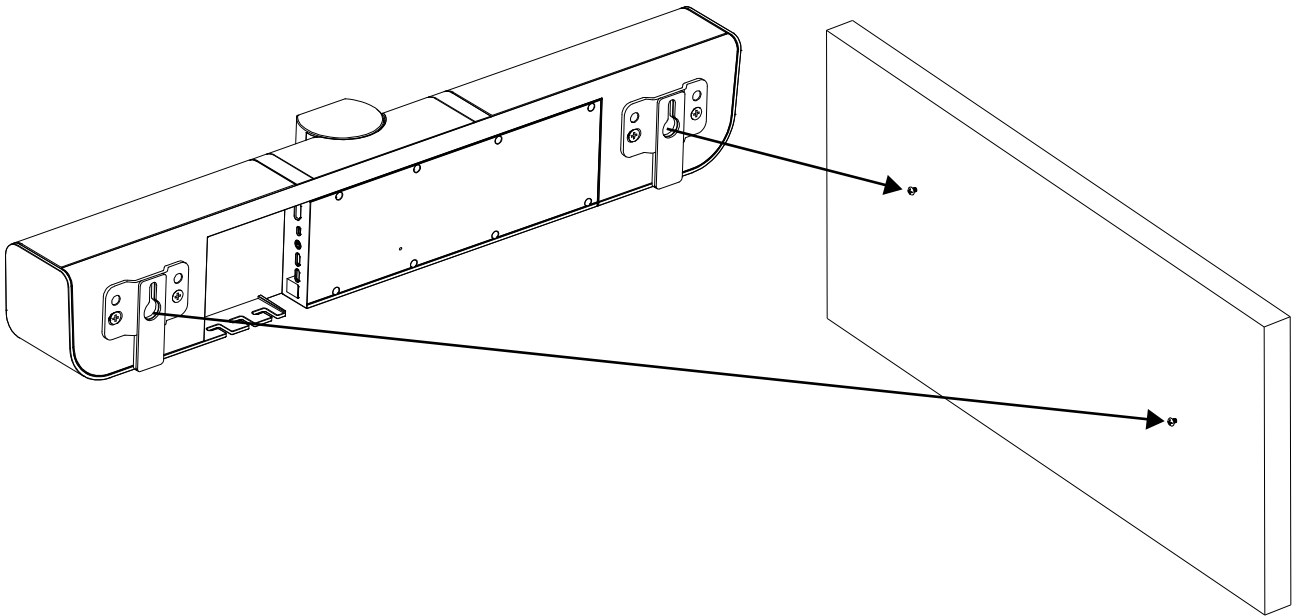
2. Drill 2 holes on the wall and screw the screws into the holes. Leave some space between wall and screws for hanging the VB342 on the wall.



3. Install the wall mount bracket on the VB342 unit.



4. Hang the VB342 on the wall.



# Using VB342

## Make a Video Call

1. Make sure all devices (VB342 and laptop/PC) are well connected and VB342 is powered on.
2. Run your video application (Skype™, Skype for Business, Google Hangouts™, Zoom™, Bluejeans, WebEx™, Adobe Connect™, WebRTC, and etc.) on your laptop/PC.
3. Set the VB342 camera as the primary camera and speakerphone for your video application (refer to your video application user guide). You can now make your call.
4. The VB342 is a plug-and-play conference camera. The system requires no special drivers, but we do recommend installing the AVer PTZApp for a better user experience. For information on how to install and use the AVer PTZApp, refer to the AVer PTZApp section in this user manual.

## LED Indicator

LED	Status
Power	ON: Blue OFF: Red
Mute	Mute: Red Un-Mute: Blue

# AVer PTZApp

## Install AVer PTZApp



Please go to <http://www.aver.com> > **Support** > **Download Center** > **Conferencing System** to download the AVer PTZApp. After downloading, double-click on the file and follow the on screen instructions to complete the installation.

Remember to select the “**Skype plug-in**” option during installation.

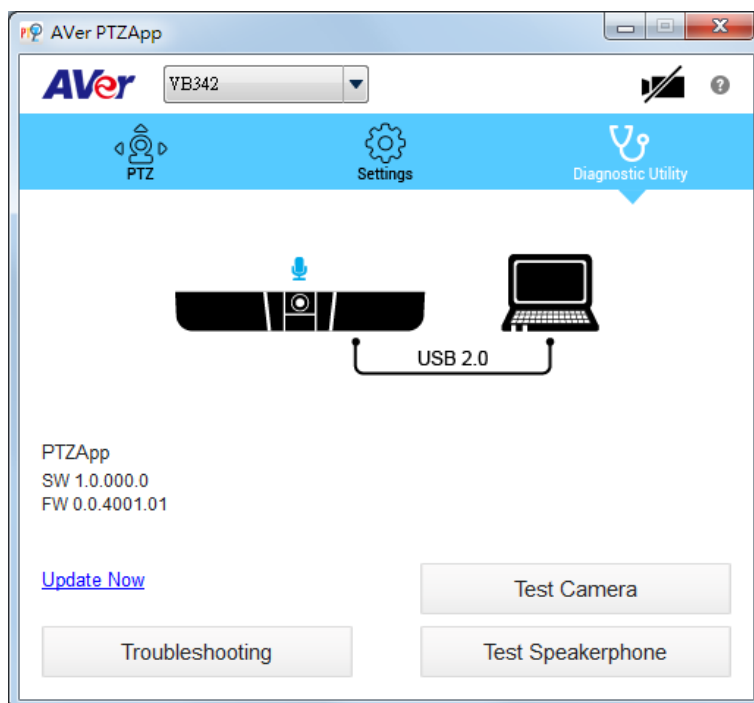
After installing the AVer PTZApp, double-click on the AVer PTZApp icon to run the application.

## Use AVer PTZApp

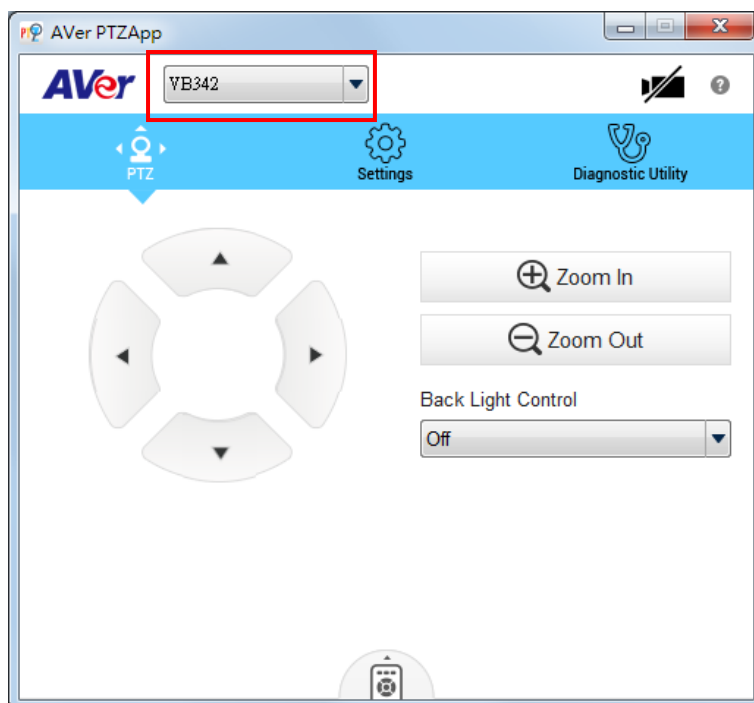
1. To run your video application, a plug-in request will be displayed on your video application interface. Click on it to accept the plug-in; your video application can now be control by AVer PTZApp and remote control.

If you have the Skype plug-in checked during the installation, a plug-in request will be displayed in Skype. Click on the Skype plug-in request to accept the plug-in; this enables  and  functionality on the Remote Control.

2. During your video call, you can use the AVer PTZApp to pan, tilt and zoom the camera in/out and enable/disable the backlight feature.
3. For the first time use, you can check the connection, camera, and speakerphone status, and setup the camera and speak phone's parameters. Each function will be described below:



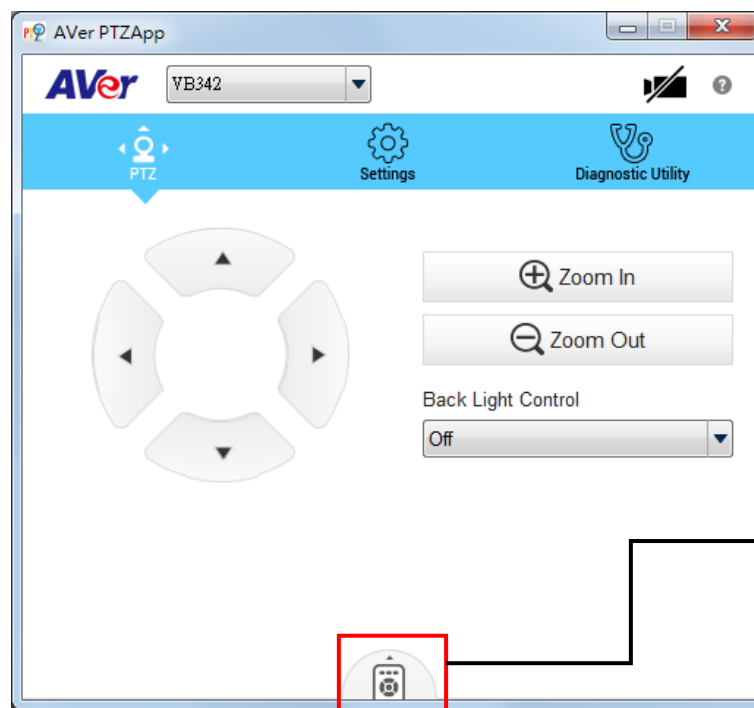
- **Currently selected device:** This field displays currently selected VC, CAM, or VB device controlled by PTZApp. If you have more than one AVer VC, CAM, or VB devices connected to this PC/Mac PTZApp is running, you can click on the drop down list to select other AVer VC, CAM, or VB device.



- **Function icon:** Click it to switch to the function's page.

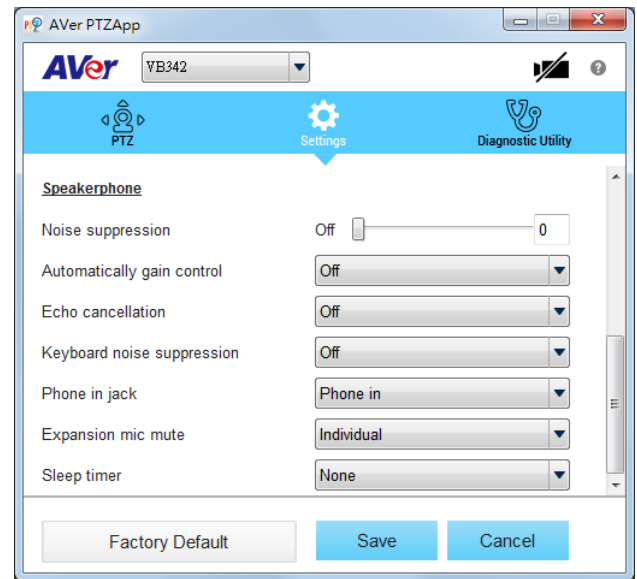
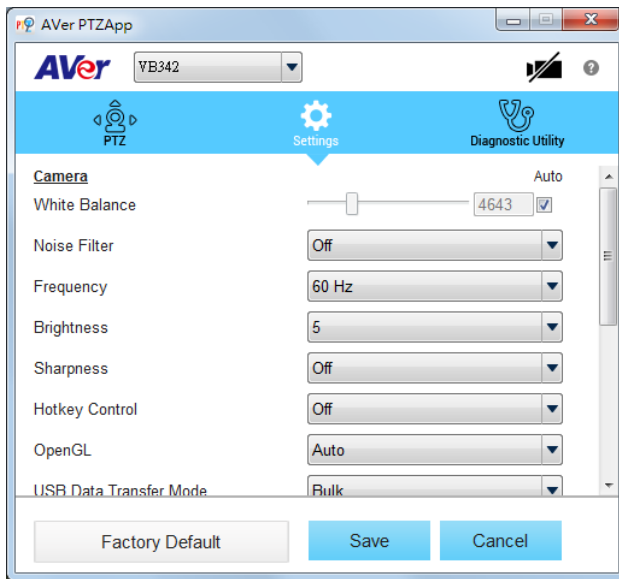


- **PTZ:** To control the camera direction, zoom in and out, and to enable/disable the backlight compensation during your video call.

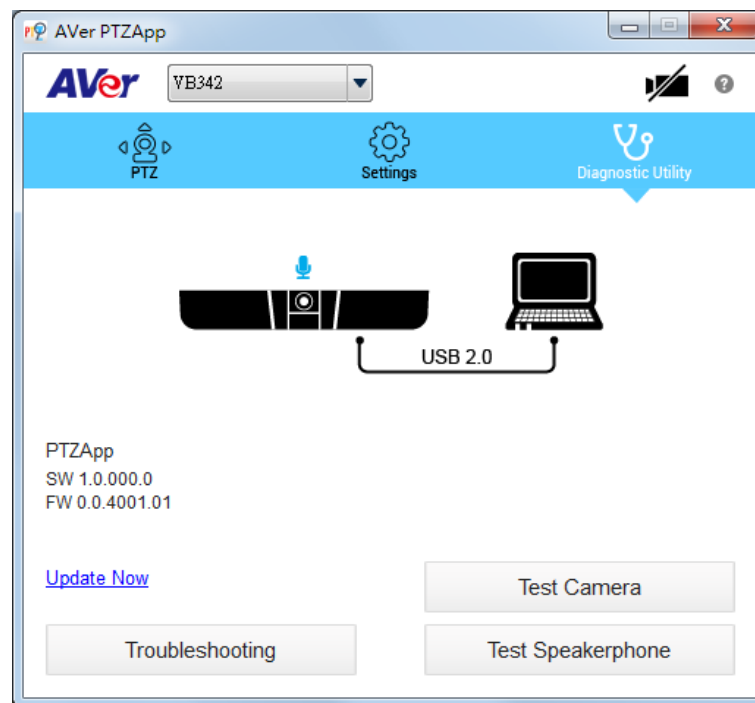


The remote controller selection function is not support for VB342.

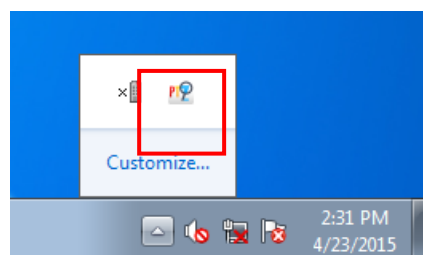
- **Settings:** To setup parameters of the camera and speakerphone. Click the **Save** button to save all settings. To change all the settings, back to the default values, click the **Factory Default** button.



- **Diagnostic Utility:** To display the S/W and F/W version and the devices connection status. You can also test the camera and speakerphone status, and update the firmware of the camera.

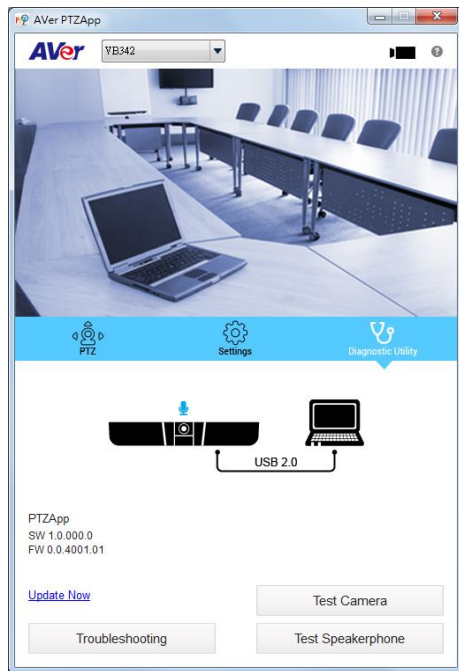


- **Minimize:** Minimize the app to system tray. To quit the application, right-click the icon on the system tray and select **Quit**.

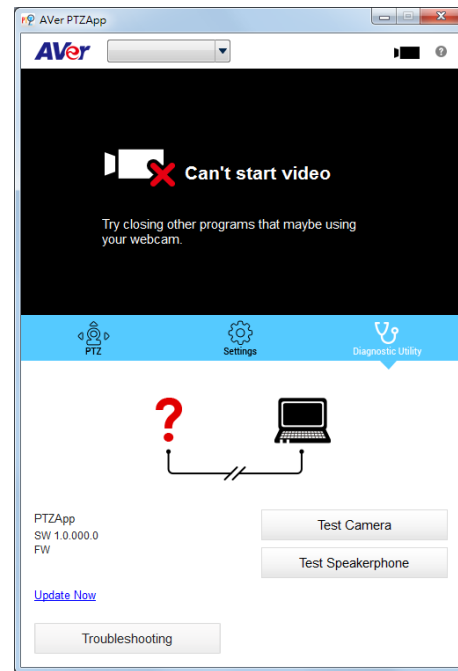




- a. **Camera**: Click it to view the camera live view. Click the camera icon again to close the camera live view. If the live video did not appear, please check the camera and the laptop/PC connection to make sure all are correct and well connected.

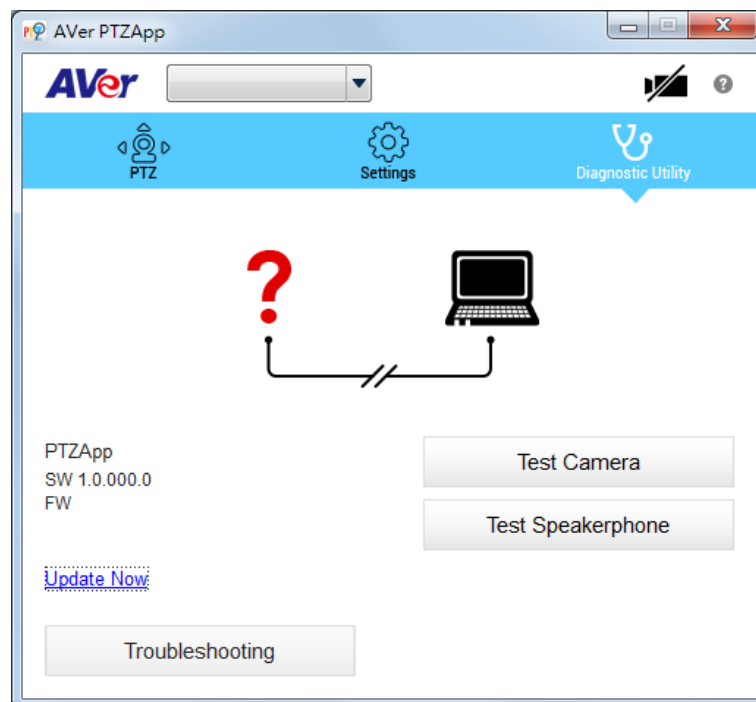



Normal

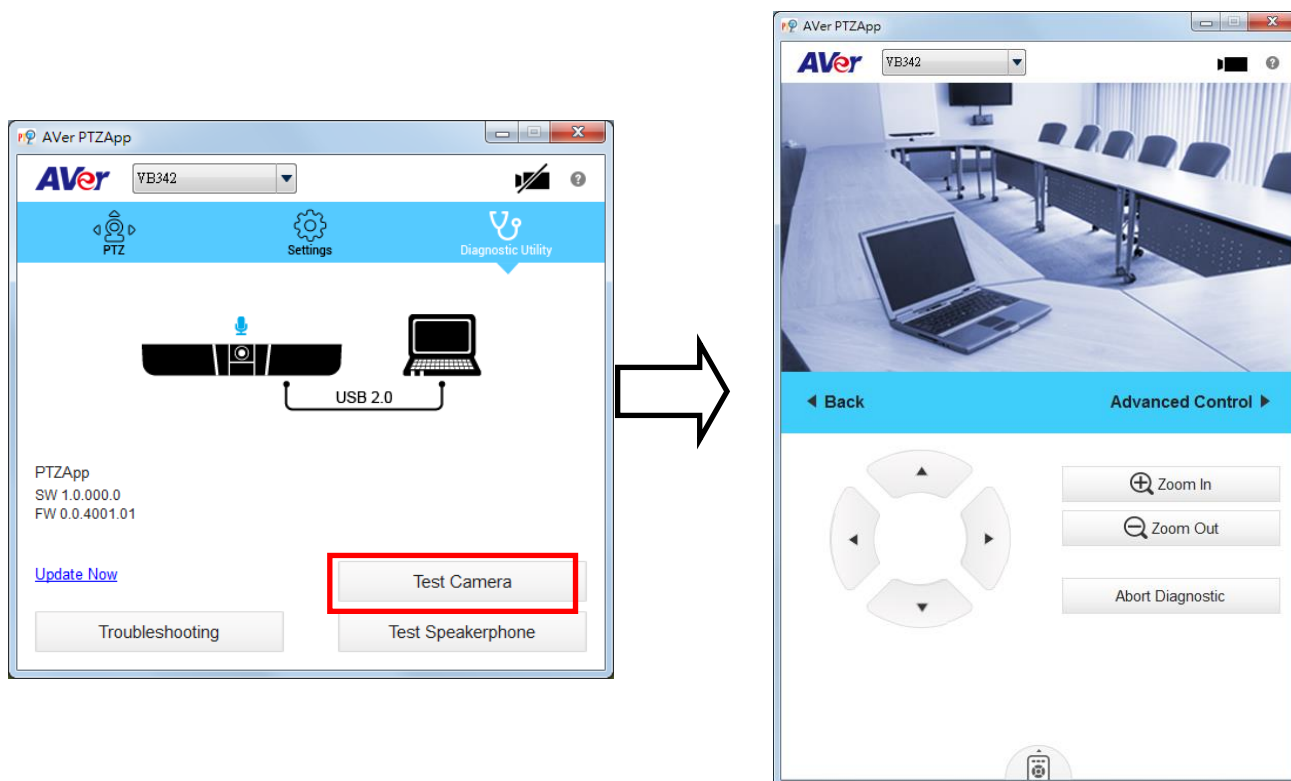


Un-normal

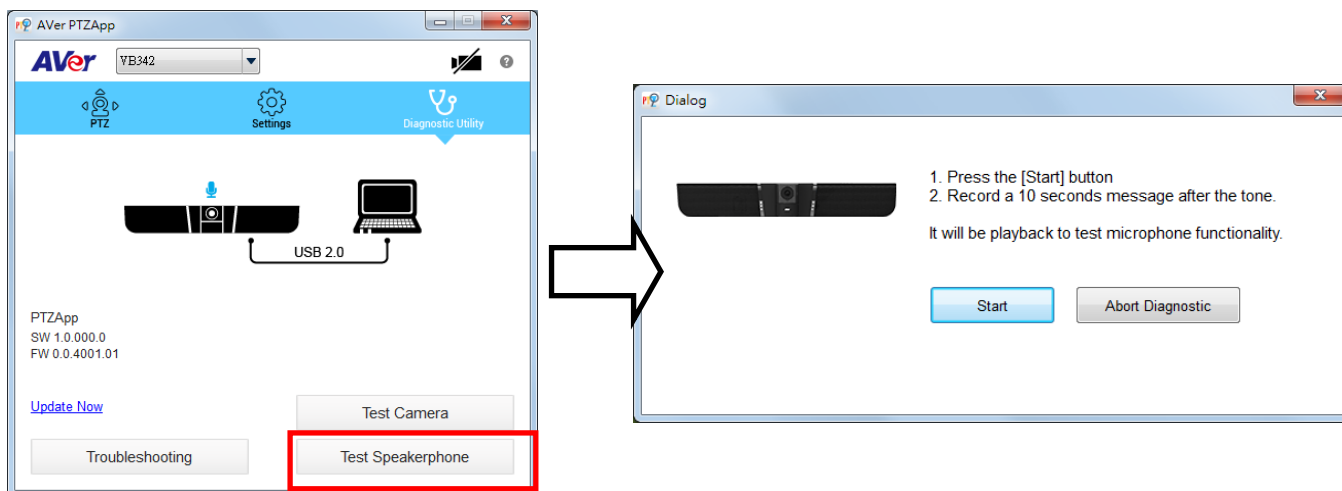
- **Connection diagnostic**: Display devices connection status. If the AVer PTZApp has detected that some of the devices are not connected well, the diagram will display an “//” and “?” on the device to indicate the connection has a problem. If the camera is in use by another application, it will display “Can’t start video” warning.



- **Test Camera:** Click the **Test Camera** button to check the camera status. Click  to view camera live video. Also, you can adjust the camera direction and view of the zoom in/out. To leave the page, click the **Abort Diagnostic** button.

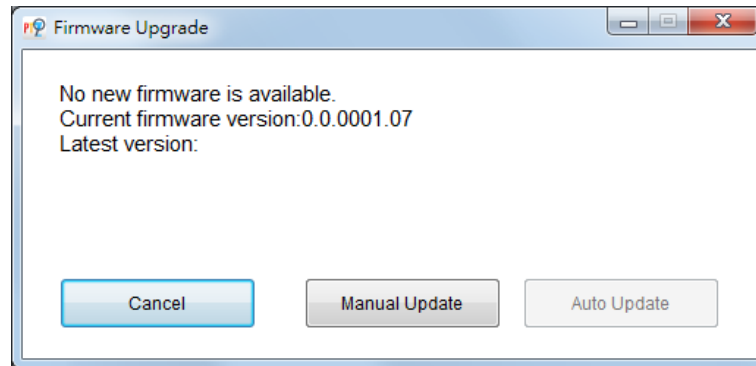


- **Test Speakerphone:** Click to check the speakerphone status. It will require the user to record a short message and play it back to ensure the speakerphone is working.



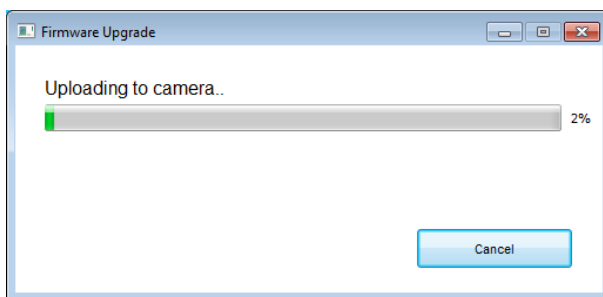
■ **Update Now:** Allows the user to update the VB342 camera's firmware.

1. Click "Update Now".
2. A dialog will display the current firmware version and available new firmware version (internet connection is required).

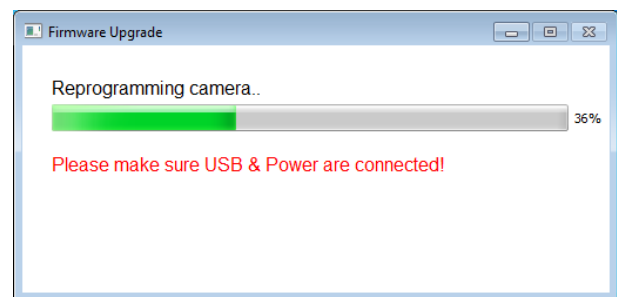


3. To auto update, click "Auto Update" and update process will start. The new firmware will be downloaded first; then, the new firmware will be uploaded to camera.

**[Note]** Before updating the new firmware to the camera, please make sure camera and laptop/PC are all well connected and stay connected during the entire process.



Download new firmware

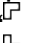
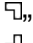
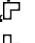
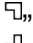
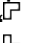
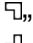


Update new firmware to camera

4. To update the firmware manually, click "Manual Update" and locate the new firmware to start the process.

■ **Troubleshooting:** collect more system information for troubleshooting before you contact AVer technical support.

## Full Screen Mode

PTZApp can switch to full screen mode. Move the mouse to the right corner bottom of the video screen and a “ ” icon is displayed on video screen. Click “ ” icon and video screen will switch to full screen mode. In full screen mode, user can use direction panel to control camera direction. Click “ ” icon can go back to normal screen view.

