

INTEGRATED SCRIBING MARKING MACHINE

e10 i63s

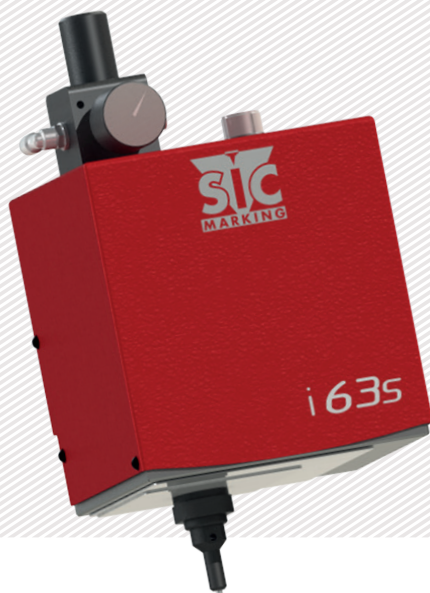


+ EXTREMELY QUIET MARKING

- Air supply
- Ideal for light marking

+ SIMPLE AND EASY TO USE

- Ideal for integrations
- Removable robotic cable
- Quick pneumatic connection



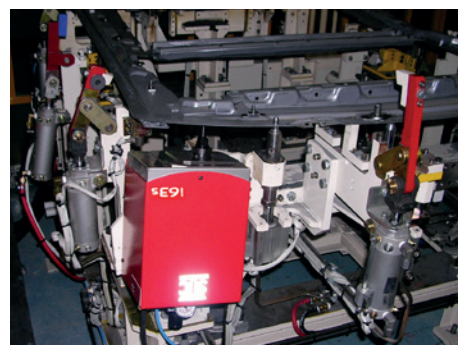
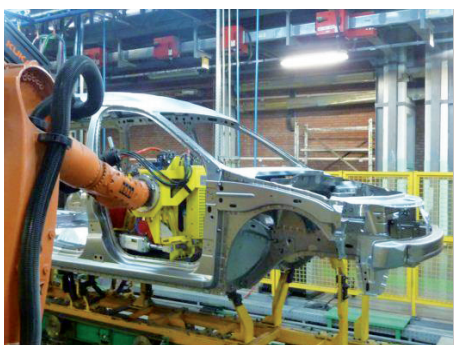
+ ROBUST AND RELIABLE

- Protected by metal bellows
- Designed for intensive use
- Compatible with previous ranges

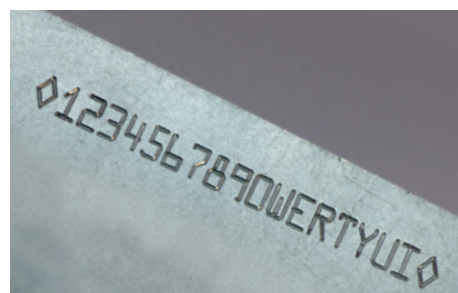
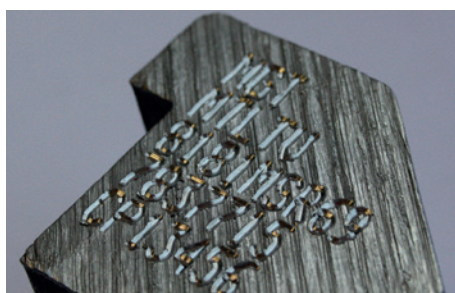
+ LOW COST OF OWNERSHIP

- No consumable
- No maintenance

APPLICATIONS

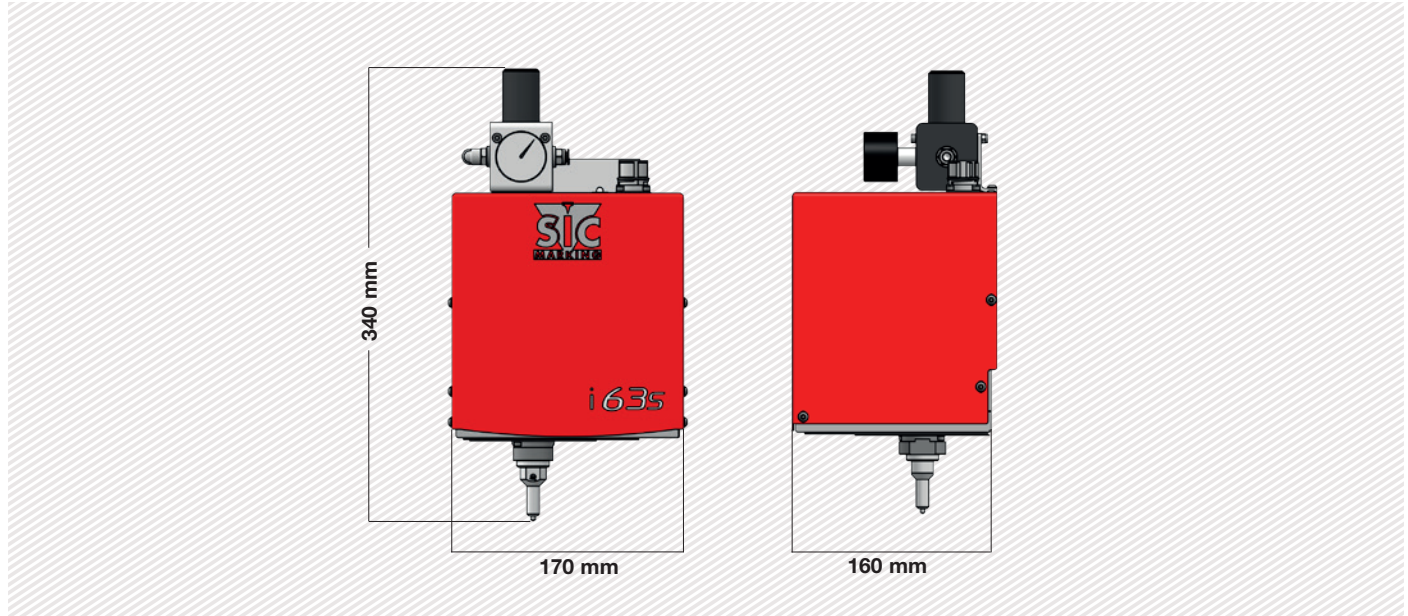


SCRIBING MARKING EXAMPLES



TECHNICAL & MECHANICAL FEATURES

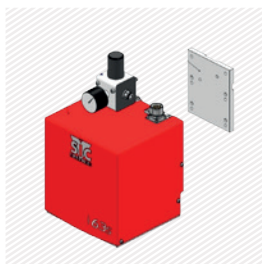
| e10 i63s | |
|-----------------------------------|--|
| Marking window | 60 x 30 mm - 2.4 x 1.2 in |
| External dimensions | 160 x 170 x 340 mm - 6.3 x 6.7 x 13.4 in |
| Weight | 7,8 kg - 15.4 lbs |
| Stylus | Carbide or Diamond Tip |
| Machine / controller cable length | 5 m - 16.4 ft (10 m - 32.8 ft and 15 m - 49.2 ft optional) |
| Air supply | 6 bars |



OPTIONS



Large capacity rotary axis



Adapter plate i61s -> i63s



Column base



DIN rail kit for e10R controller



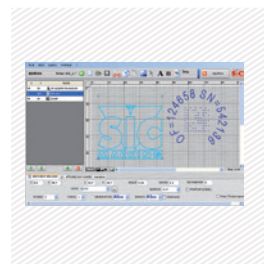
Wide range of stylus



3rd / 4th axis management card



Wireless barcode reader



PC software



Maintenance kit

Please consult us if a specific configuration is not published in the table attached.

SIC Marking designs customized and turnkey solutions for all industrial sectors. Our design offices produce machines in compliance with your specifications and your industrial standards.

E10 CONTROL UNIT

The e10 controller

- USB Port: to easily upload / download your marking files
- Fully programmable
- Standalone (no PC needed)
- Membrane protected industrial Keyboard
- IP40 waterproof box (no opening or fan)
- Communication Cards - I / O



- + Color screen
- + USB Port
- + Multiple connectivities
- + PC software and utilities

Technical & electronic features

| e10 Controller | |
|-----------------------|--|
| Dimensions | 322 x 380 x 112 mm - 13.7 x 15 x 4.4 in 140 x 380 x 222 mm - 5.5 x 15 x 8.7 in with DIN rail kit option |
| Weight | 5 kg - 11lbs |
| LCD screen resolution | 480 x 272 pixels |
| Keyboard | Qwerty integrated, protected by membrane |
| Power | 300 Watt |
| Power supply | Single phase, 85 to 260 VAC, 50 to 60 Hz |
| Controlled axes | 2 (optional 3rd / 4th axis card) |
| Operating temperature | From 5 to 40°C |

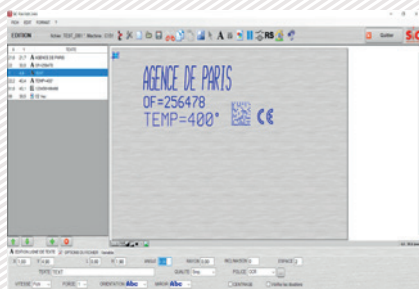
| Communication | |
|-------------------------|--|
| Communication ports | RS232, RS422, USB, RS485 Profibus, TCP/IP, Ethernet/IP |
| Inputs-outputs | 8/8 |
| External keyboard input | USB |
| PC software | Creation of marking files, transfer controller / PC or USB key |

Optional communication cards:



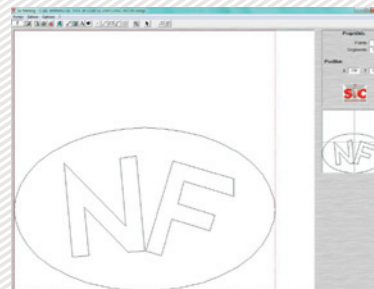
PC UTILITIES

File editor



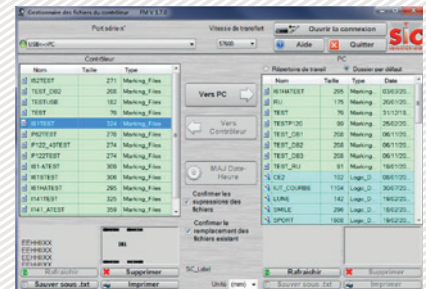
- + Creation or modification of files on PC.

Creation of logos



- + Creation of vector and matrix logos.

Creation of logos



- + Backup and file transfer utility.

E 10 RANGE SOFTWARE

Software features

| | |
|-------------------------|--|
| Text function | Incrementation, date codes |
| Logos | Download from a PC or USB key |
| Datamatrix | Up to 348 characters, 48 x 48 dots |
| Fonts | Arial, Comic, Comic_B, Courier, OCR, OCR_BOLD, OCRA, 4x6 |
| Style | Angular, Radial, Inverse, and Mirror |
| Character Size | From 0,1 mm to 99 mm (limited following marking window) |
| Depth | Up to 0,3 mm (according to the material) |
| Resolution Between Dots | 0,05 mm MAX |
| Password | 2 security levels |
| History function | Exportable Excel file |
| Help with maintenance | Auto diagnosis |
| Available languages | 17 |



Graphic view



Edit menu

| AFFECTATION DES I/O | | |
|---------------------|-----------|----------|
| Num | Entrée | Sortie |
| 1 | ARRET | Cycle |
| 2 | DEPART | Dernier |
| 3 | Sel. Fich | Erreur |
| 4 | Sel. Fich | Pause |
| 5 | Sel. Fich | Prêt |
| 6 | Sel. Fich | PasPièce |
| 7 | Sel. Fich | Pièce |
| 8 | Sel. Fich | Usure |

| STATISTIQUES CONTROLEUR | | |
|-------------------------|-----------------|-------|
| Déplacements | Mémoire | |
| 0 Cycles | 33 Fichiers | |
| 0 Caractères | 17959 o. Utili. | |
| AXE X 0.0 m | 46409 o. Libres | |
| AXE Y 0.0 m | 27% Utilisées | |
| AXE Z Num. 0.0 m | | |
| Impacts | | |
| F1: 0 | F4: 0 | F7: 0 |
| F2: 0 | F5: 0 | F8: 0 |
| F3: 0 | F6: 0 | F9: 0 |

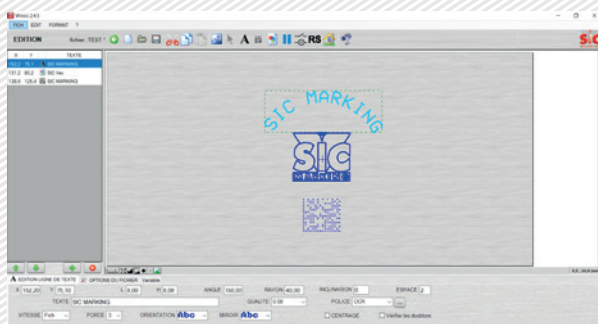
PC software for directly controlling the marking machine.

Available functions:

- Editing of marking files
- Input / output management
- History function and anti duplicates
- Datamatrix ECC200 and UID
- ...

OPTIONAL WINSIC SOFTWARE

WINSIC is a PC software for direct control of the marking machine.



+ Built-in logo design utility

+ Database Management (Excel, Access, txt)

+ Insertion of background images

