

RFP 48 DECT Base Station

Mitel's unique combination DECT & WIFI base-station for cost-effective deployments

Key Features

- Simultaneous DECT & WIFI connectivity
- IEEE 802.11abg/n/ac support
- MIMO support
- 8 simultaneous DECT voice channels
- Centralized DECT and WIFI management with the Open Mobility Manager (OMM)



The RFP48 is a dual-mode base station designed to deliver reliable connectivity in active work environments. This base station simultaneously supports DECT for voice and WLAN for 802.11ac WIFI connectivity speeds to your everyday devices.

Dual Connection Modes

The RFP 48 supports simultaneous DECT and 802.11ac WLAN connections for optimal coverage in various environments.

Ideal for basic WIFI needs

Provides basic WIFI connectivity at 802.11ac speeds.

Save on Deployment Costs

No need to deploy separate DECT and WLAN infrastructure. The RFP48 can provide enterprise-grade voice and basic WIFI connectivity in a single, centrally managed deployment.

Industry Standard WIFI

Each RFP48 can operate in either 802.11abg, 802.11n, or 802.11ac modes. MIMO is also supported.

GENERAL INFORMATION

- Requires SIP-DECT 8.0 software or higher
- Replaces the RFP43
- Centralized DECT & SIP configuration, clustering administration via separate Open Mobility Manager (OMM) provisioning software
- Supports natively running the OMM provisioning application for installations up to 256 RFPs and 1024 handsets/users.
- Simplified Licensing. No base-station licenses required for up to 5 base-station deployments
- Supports Messaging and Alarms

DECT FEATURES

- All DECT channels supported for maximum use of the DECT capacity (120 duplex channels in EMEA, 50 in US/CAN)
- 12 channel base station with support for 8 simultaneous voice channels per RFP and 4 channels for switching purposes
- GAP standard supported
- Handover and Roaming support
- DSAA authentication between base and handset
- Support of DECT encryption
- Integrated DECT dipole antenna
- Supports Enhanced DECT security
- DECT XQ technology for minimization of interferences in reflecting environments
- Supports Over-the-Air DECT Handset software upgrades
- Supports Over-the-Air Synchronization

INSTALLATION

- New separate mounting bracket to ease installation and wire routing needs
- Supports wall-mount & ceiling-mount
- 1 LED to signal current operating state
- Powered via IEEE 802.3af (Class 3)

NETWORKING

- 1 x IEEE 802.3 10/100/1000BaseT
- 802.3af Power-over-Ethernet (Class 3)
- VLAN Support
- 802.1x Support
- QoS supported by Diffserv / ToS
- NTP time synchronization support

VOIP

- Connect to IP PBX via LAN
- SIP protocol support per RFC 3261
- Secure SIP over TLS, SRTP
- G.711, G.722, G.729ab1 codecs support
- Adaptive jitter compensation
- Echo cancellation / suppression
- Voice Activity Detection
- Comfort Noise Generation

TECHNICAL DATA

- Colour: White
- Dimensions (W x H x D):
 - 175 x 175 x 40 mm
- Weight: 384g
- Material: ABS
- Connectors:
 - 1 x RJ45 Ethernet Jack
 - Reset Button
- MTBF Rate: 40 years
- Operating Voltage: 37 VDC min and 57 VDC max
- Current consumption: 155 mA at 55 VDC
- Type of ingress protection: IP 20
- Flame resistance UL94 HB
- DECT Frequencies
 - Europe, Middle East,
 - Australia, New Zealand
 - North America
 - South America

Maximum Transmitted RF Power (EU)

WLAN 2.412 - 2.472 GHz: 20dBm (100mW)

WLAN 5.180 - 5.825 GHz: 20dBm (100mW)

DECT: 1.880 - 1.900 GHz: 24dBm (250mW)

ENVIRONMENTAL

- *RFP Operational:*
 - *Temperature -10°C to +45°C*
 - *Humidity 34% at +45°C*
 - *Humidity 95% at +29°C*
- *Storage:*
 - *Temperature -40°C to +70°C*
 - *Humidity 15% at +70°C*
 - *Humidity 95% at +29°C*

REGULATORY STANDARDS EMC/RADIO

- *Canada:*
 - *ICES-003 (Class B)*
 - *RSS-GEN*
 - *RSS-210 (WLAN)*
 - *RSS-213 (DECT)*
- *USA: CFR Title 47, Part 15 (Class B)*
 - *FCC Part 15 Subpart C*
 - *(WLAN) FCC Part 15.247*
 - *(DECT) FCC Part 15 Subpart D*
- *European Union:*
 - *2014/53/EU (RED)*
 - *2011/65/EU (RoHS)*
 - *EN 301 489-1, 6, 17*
 - *EN 301 406*
 - *EN300 328*
 - *EN 301 893*
 - *EN 50385*
 - *EN 60945 :2002 (Clause 1C, EMC only)*
- *Australia / New Zealand:*
 - *AS/NZS 4771*

SAFETY

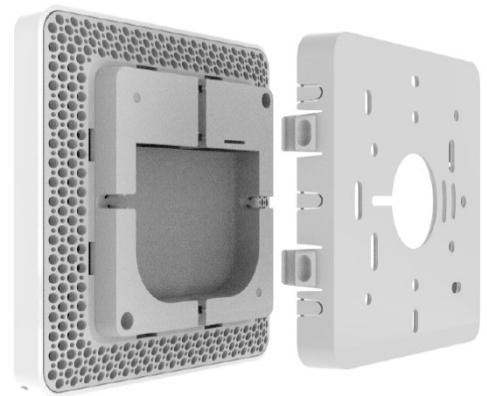
- *Canada: CAN/CSA C22.2 NO. 60950-1*
- *USA: UL 60950-1*
- *European Union: EN 60950-1*
- *Australia/New Zealand: AS/NZS 60950-1*

INCLUDED IN THE BOX

- *RFP 48 Base Station*
- *Mounting Bracket, 2 screws & screw anchor*
- *Circular Mitel Logo Plate*
- *Installation & regulatory documents*

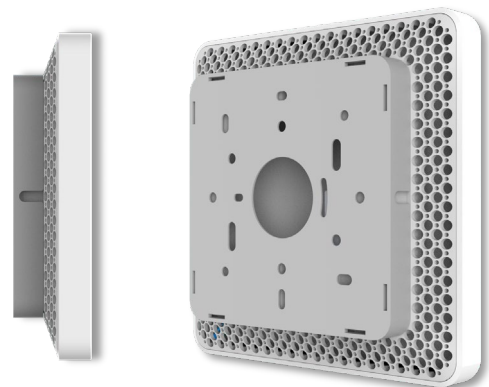
PART NUMBERS

Model	Part Number
RFP 48 WLAN Base Station	50006976
48VDC Ethernet Pwr Adapter 100-240V 802.3af (Optional)	51015131



RFP48 Rear View

Mounting Bracket



RFP48 Side View

RFP48 with Mounting
Bracket attached