

# Mitel WLAN Adapter Setup Guide

Thank you for purchasing the Mitel Wireless LAN (WLAN) Adapter.

The Mitel WLAN Adapter is a wireless bridge that can be used to add wireless connectivity features to the Mitel IP phones (for example, Mitel MiVoice 6900 Series IP phones or the Mitel 6800 Series SIP phones). With 2.4GHz/5GHz band support, the Mitel IP phones can easily be connected to a wireless network. Enterprise security features will ensure safe and secure use of wireless communication at an office, factory, or any other environment where high security is required.

This Setup Guide explains how to setup and use the Mitel WLAN Adapter in a wireless network.



July 2019  
5 8 0 1 5 1 4 5

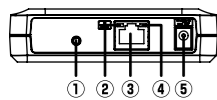
## Package Contents

Following items are bundled with the Mitel Wireless LAN Adapter.

- Mitel WLAN Adapter
- AC adapter
- Network cable
- Safety Information and Regulatory Compliance Insert

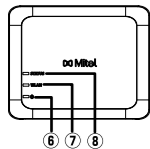
## Parts and Functions

FRONT

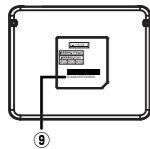


① Push switch	Starts the Mitel WLAN Adapter in Configuration Mode: - Press and hold the push switch for 5 sec while the Mitel WLAN Adapter is active.  Configures the Mitel WLAN Adapter using Smart Wireless Setup: - Press and hold the push switch for 10 sec while the Mitel WLAN Adapter is active.  Resets the Mitel WLAN Adapter to factory default settings: - Press and hold the push switch while turning on the Mitel WLAN Adapter. - Release the switch when the WLAN LED turns from Green to Red.
② Status LED (Green/Orange)	BLINK (Orange) - Waiting for connection when Link LED is OFF. - Transferring data when Link LED is ON.
③ LAN port	Connect the network cable.
④ Link LED (Green)	ON : Connected to a wired LAN
⑤ Power connector	Connect the AC adapter.

TOP



BOTTOM



⑥ POWER LED (Green/Red)	ON (Green): Powered on ON (Red): Powered on and ready BLINK (Red): Connected device IP changed. Disconnected due to security issue.
⑦ WLAN LED (Green/Red)	ON (Green): Running in Infrastructure mode. BLINK(Green): Processing setup using the Smart Wireless Setup. * Blinks together with STATUS LED when running in Configuration Mode. * Turns from Green to Red during the initialization.
⑧ STATUS LED (Green/Red)	ON (Green): A network connection is established. BLINK (Green): Transferring data. * Blinks together with WLAN LED when running in Configuration Mode.
⑨ MAC Address	MAC Address of the Mitel WLAN Adapter

## Configuration Method 1 - Setup on a 6900 IP Phone (MiNet firmware only)

### Notes:

1. For 6900 IP phones with SIP firmware, see **Configuration Method 2 -Setup on 6900 IP Phone (SIP firmware only)**
2. The 6905 and 6910 IP phones do not support the **Configuration Method 1**.

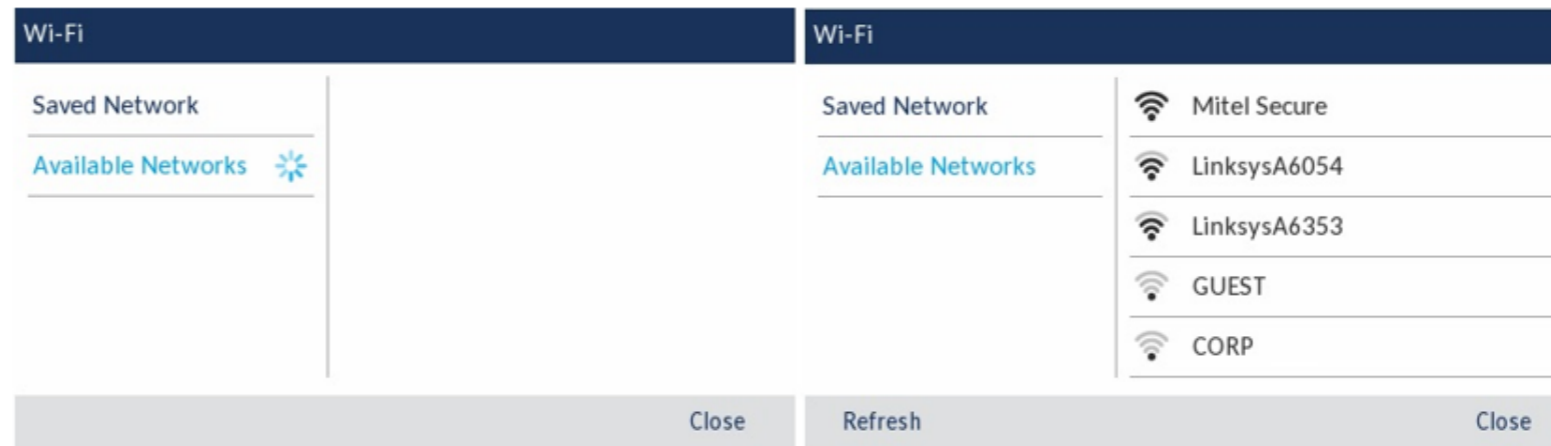
- 1 Plug the WLAN Adapter into the 6900 series phone using the supplied network cable. Plug one end of the cable into the network jack on the adapter and the other end into the network jack on the back of the phone.

For more information on the WLAN Adapter features and configuration, see the *Mitel WLAN Adapter Administration Guide* or contact your system administrator.

To ensure good voice quality, the phones may need to be configured with the correct network Quality of Service (QoS) settings. For information on how to configure network policy settings in the 6900 series IP phones, refer to the Mitel IP Sets Engineering Guidelines.

- 2 Plug the WLAN adapter power cord into an AC outlet.

- 3 The **Available Networks** settings menu will automatically display after approximately 30 seconds.

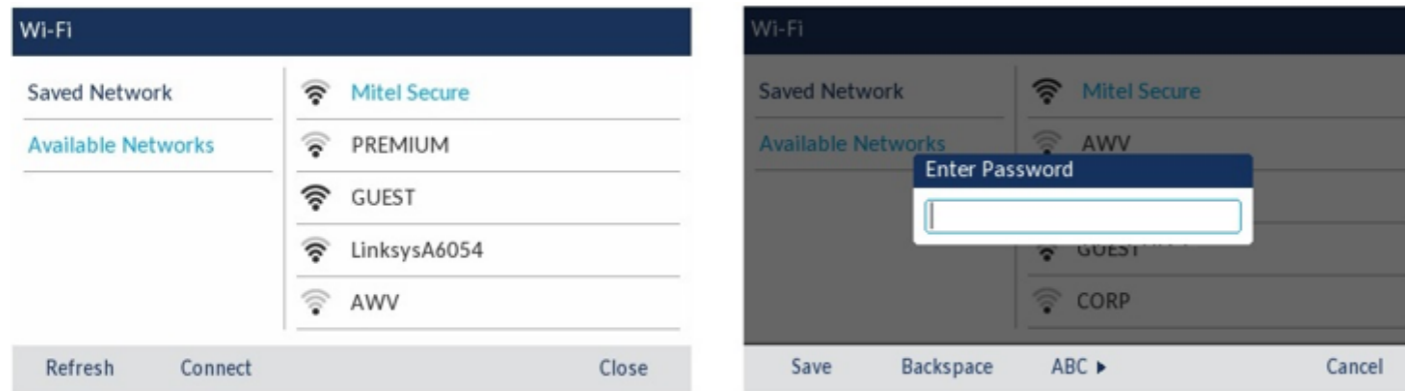


**Note:** **Saved Network** displays the Wi-Fi network currently connected to the phone.

- 4 Select an SSID (that is, the name of a Wi-Fi network, for example, **Mitel Secure**) from **Available Networks** to connect. If the SSID is secured, a password prompt appears.

**Note:** SSIDs with UTF-8 characters are not supported.

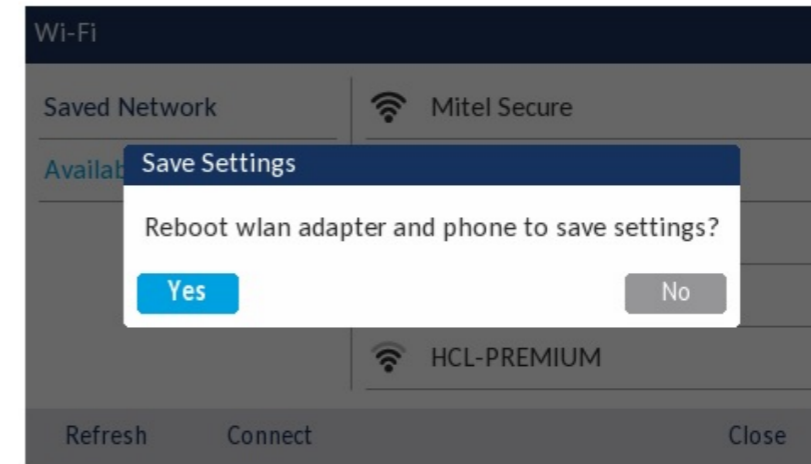
5 Enter the password for the network and select **Save**.



**Notes:**

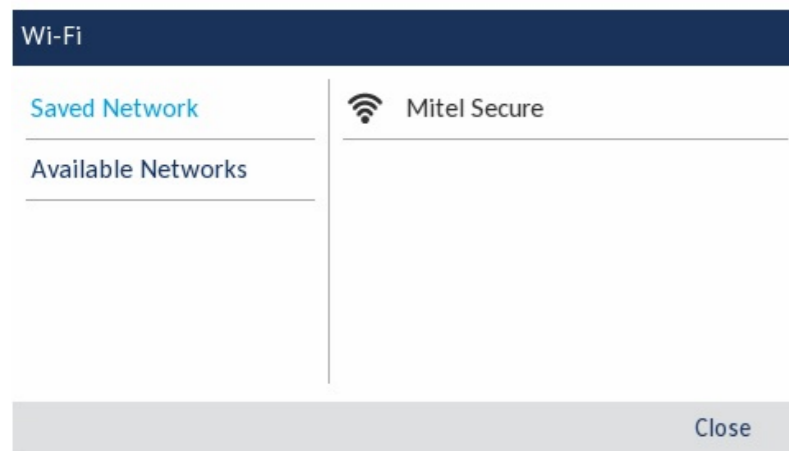
1. The Mitel 6905, 6910, 6920, and 6930 IP phones support the following special characters in the password:
  - Dialpad key 0 - 0+{}<>"^|?
  - Dialpad key 1 - 1.;=\_'&()[]\$!
  - Dialpad key \* - \*<SPACE>
  - Dialpad key # - .#/\@%^\~`
2. The Mitel 6940 IP phone allows you to enter the special characters through keyboard.

6 After entering the password, the **Save Settings** window appears. Select **Yes** to save your settings and to reboot the WLAN adapter and the phone. The phone is successfully connected to the network.

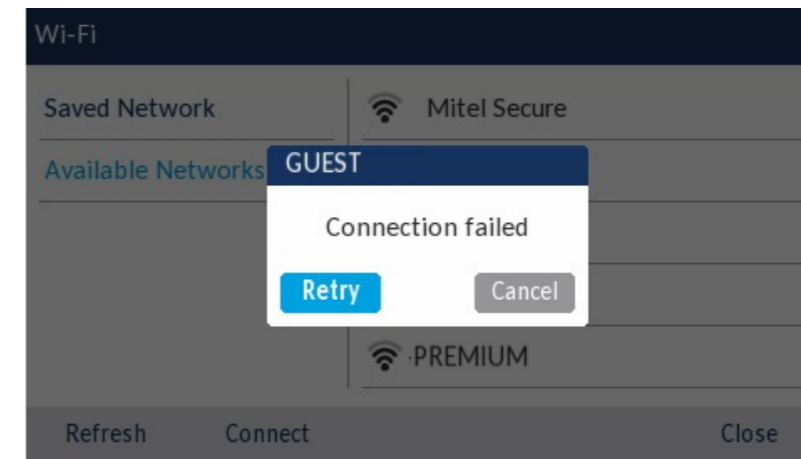


**Note:** If you are not connected to the network after a reboot, enter the password again since you may not have entered the correct password.

7 The connected SSID (Mitel Secure) is listed under **Saved Network**.



8 If the password you entered is incorrect, a **Connection failed** alert appears. To re-enter the password, select **Retry**. To cancel the connection attempt, select **Cancel**.

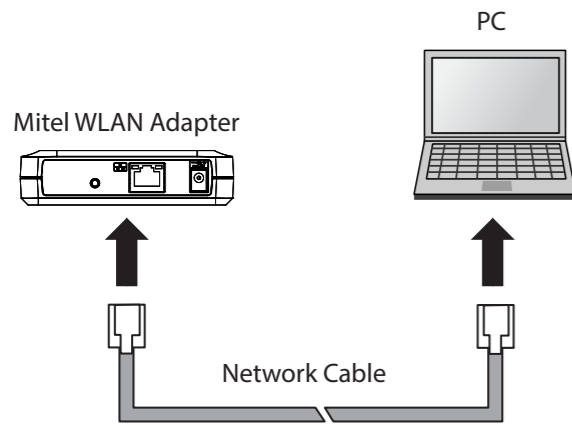


**Note:** If the password that you entered is incorrect, the phone normally displays the option to retry. In some cases, an incorrect password is accepted by the WLAN adapter but on reboot the Wi-Fi app auto pops up if phones fails on DHCP due to misconfiguration. You must enter the correct password again for the SSID.

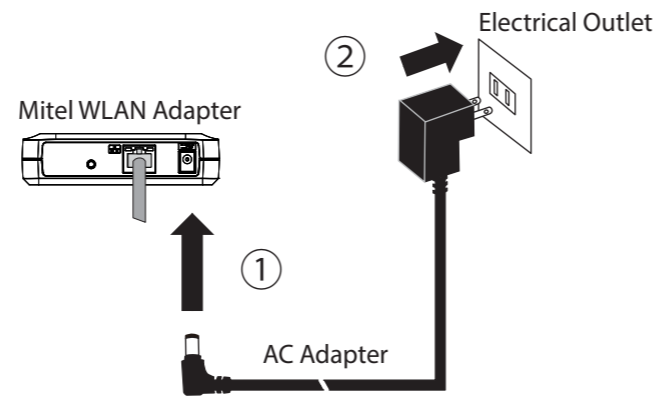
9 Press **Refresh** to refresh the list of available networks. The phone searches for new networks within its range and updates the list of available networks.

## Step 1 Start Adapter in Configuration Mode

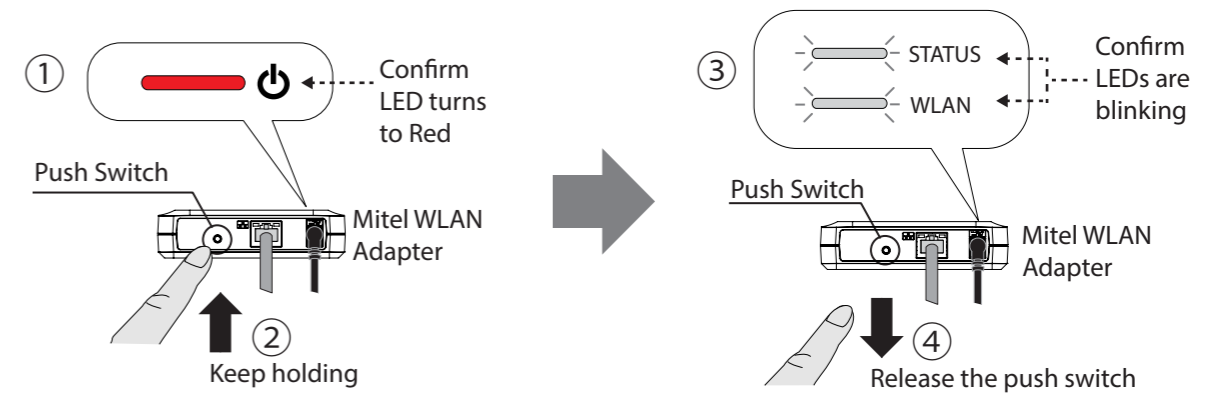
- 1 Connect the Mitel WLAN Adapter to the PC using the network cable that came with the Mitel WLAN Adapter.



- 2 Connect the AC adapter to the Mitel WLAN Adapter, and the AC adapter's plug to an electrical outlet.



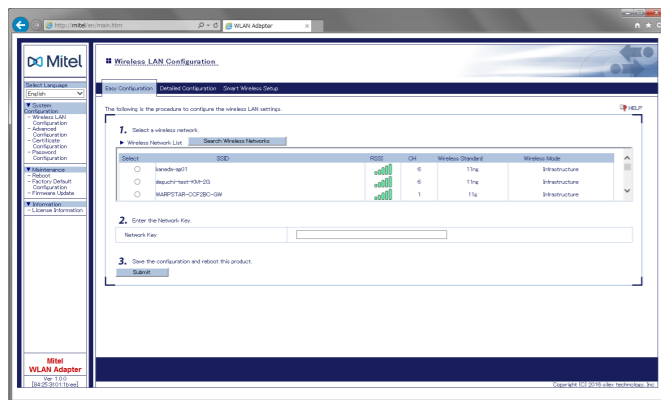
- 3 When the POWER LED on top of the Mitel WLAN Adapter turns Red, press and hold the push switch. Release the push switch when WLAN LED and STATUS LED start to blink Green together (it may take 20sec until blinking). The Mitel WLAN Adapter will start running in Configuration Mode and will be ready to configure from the PC that has been connected to the Mitel WLAN Adapter via a network cable.



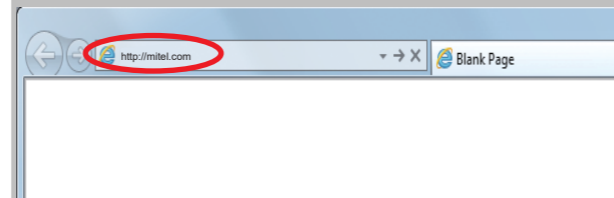
\* If WLAN is enabled on your PC, please disable it.

## Step 2 Setup

- 1 Start a Web browser (Internet Explorer, Safari, etc) on the PC you are using for the setup. The Web page of the Mitel WLAN Adapter is displayed.

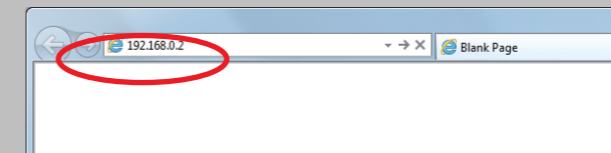


\* If the Web page is not displayed, enter "http://mitel.ca" in the address bar of the Web browser and press the Enter key.

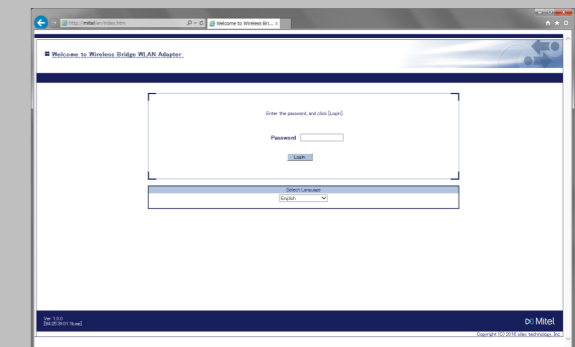


\* If the Web page is still not displayed after entering "http://mitel.ca", you need to check the IP address of the PC connected to the Mitel WLAN Adapter.

If a static IP address is configured to the PC, enter the PC's address with 1 being added to its last digit and press Enter key.

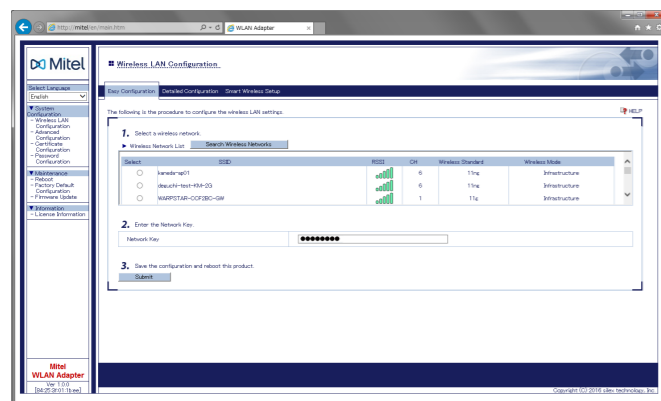


\* This screen is not displayed at the initial setup. Go to step 2. \* If a password is set on the Mitel WLAN Adapter, a password entry screen is displayed. Enter the password and click Login.

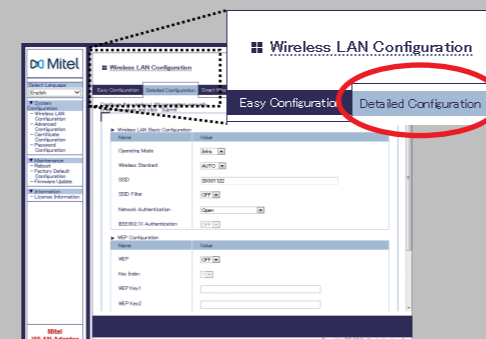


- 2 In the Web page, select the destination network from the Wireless Network List and enter the WEP Key or Shared Key for the Network Key. Click Submit when finished.

\* It is recommended to use a router/access point that supports the 5 GHz band. Due to interference and congestion, using the 2.4 GHz band may cause issues with real time voice communications.

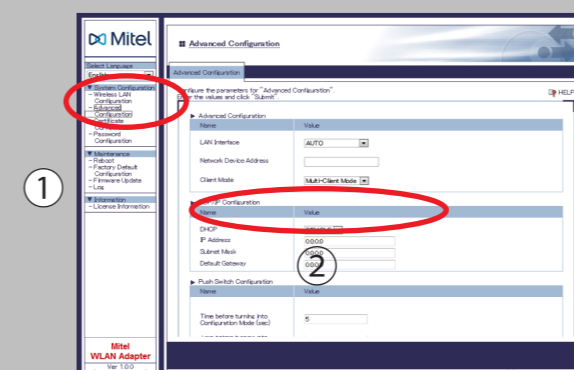


\* If the destination network is not displayed in the Wireless Network List, click Detailed Configuration at the top of the page. In the page displayed, enter the wireless settings of the network that you wish to connect Mitel WLAN Adapter to, and click the Submit button. Refer to the HELP for details on each setting.

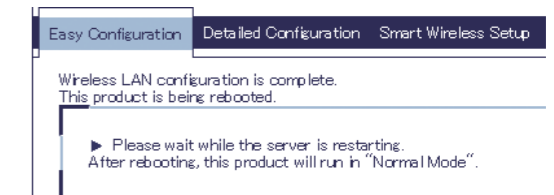


### Multi-Client Mode

\* The Mitel WLAN Adapter is set to Multi-Client Mode by default. It is recommended to keep Multi-Client Mode enabled when using the Mitel WLAN Adapter with the IP phones.



- 3 Once a message appears indicating that the configuration has been completed, close the Web browser.



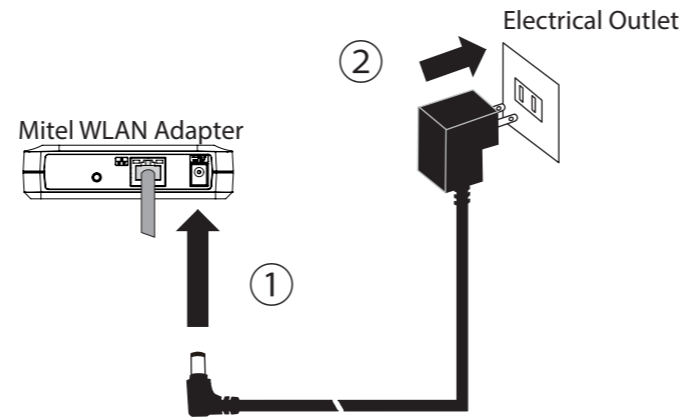
- 4 The configuration has now been completed.

**Step 3 Connect the Mitel WLAN Adapter to the IP phone you wish to use wirelessly**

**1** Unplug the Network cable from your PC and plug it into the network jack on the back of the phone.

**2** Connect the AC adapter to the Mitel WLAN Adapter and the AC adapter's plug to the electrical outlet.

**3** The phone turns on automatically when the Mitel WLAN Adapter is plugged into an AC outlet.

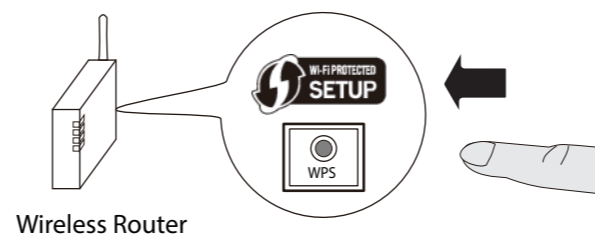


Some IP phones may require additional network settings. In such cases, refer to the manual that came with the IP phone.

**Configuration Method 3 -Easy Configuration Using Smart Wireless Setup**

The Mitel WLAN Adapter allows you to configure its wireless settings easily using a push switch if your wireless router supports WPS (Wi-Fi Protected Setup). Follow the instructions on this page to configure wireless settings using the push switch.

**1** Press the WPS button on your wireless router. Confirm that your wireless router is ready for a wireless connection to be made.



- The name, position and shape of the WPS button will differ depending on your wireless router. For details, refer to the operation manual that came with your wireless router.  
- Please use only one wireless router. If two or more routers are waiting for wireless connections, the Mitel WLAN Adapter will not be able to connect properly.

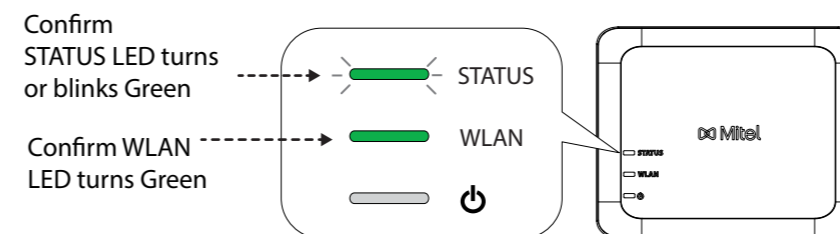
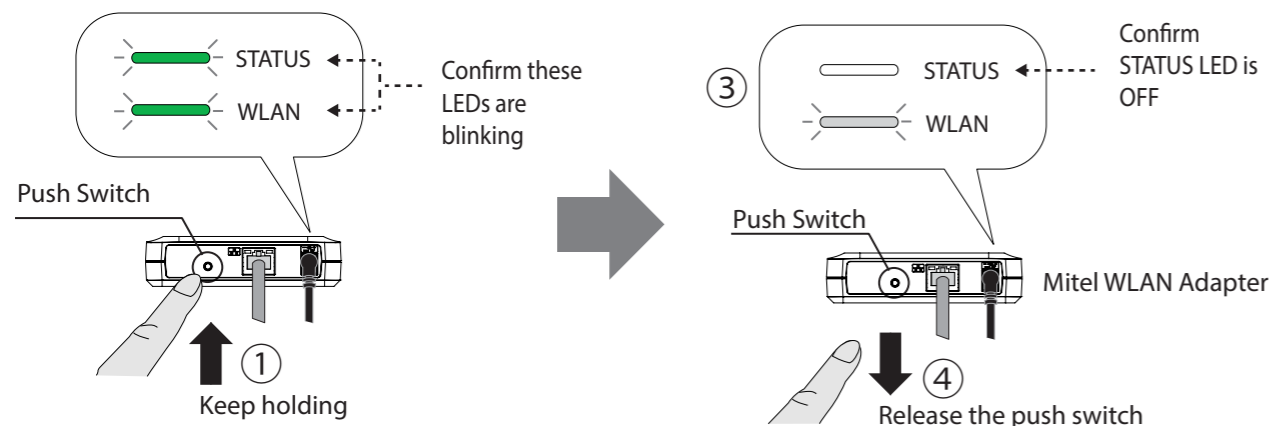
**NOTES**

- To perform wireless configuration using WPS, your wireless router must support WPS.
  - Please make sure that a wireless router supporting WPS is set up in your environment.
  - While performing this configuration, please temporarily move the Mitel WLAN Adapter closer to your wireless router to make it easier for both devices to communicate.
  - Depending on your wireless router, WPS may need to be enabled manually. For details, refer to the operation manual that came with your wireless router.
  - If a security feature such as MAC Address filtering is enabled on your wireless router, disable it temporarily so that the Mitel WLAN Adapter can communicate with your wireless router.
- It is recommended to use a router/access point that supports the 5 GHz band. Due to interference and congestion, using the 2.4 GHz band may cause issues with real time voice communications.

**2** Press and hold the push switch at the front of the Mitel WLAN Adapter. The WLAN LED and STATUS LED will start to blink Green together. Release the push switch when the STATUS LED turns off while the WLAN LED keeps blinking (it may take 15 sec for the STATUS LED to turn off after both LEDs started blinking).

**3** The Mitel WLAN Adapter will start to communicate with your wireless router. When the wireless configuration is successfully completed, the WLAN LED turns Green and the STATUS LED turns/blinks Green.

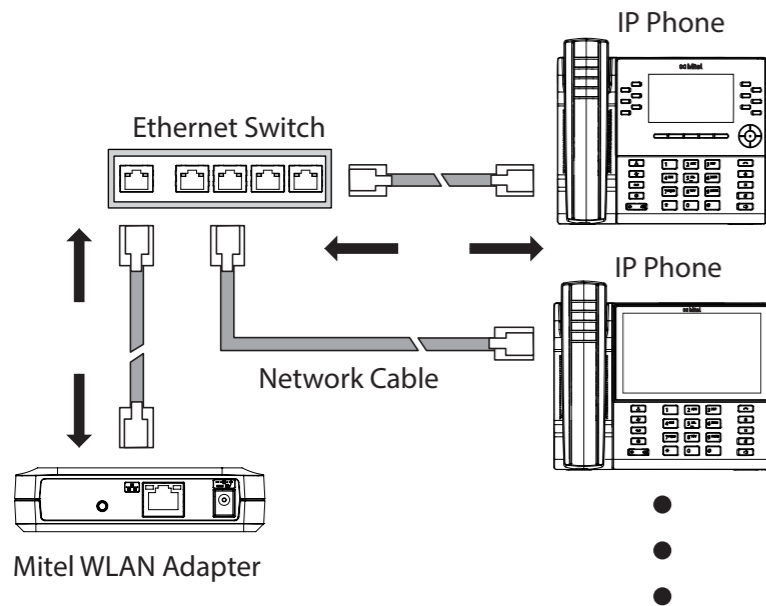
\*If wireless configuration has failed, the WLAN LED will flash rapidly. Read the notes above and start from **2** again.



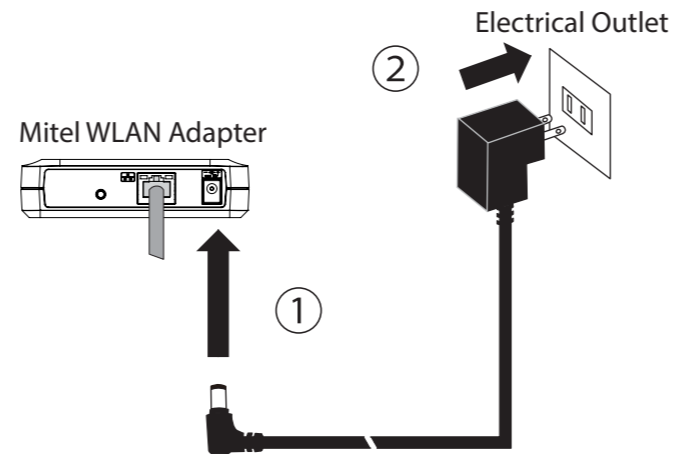
It may take a while to complete the wireless configuration depending on your environment (up to 2 min).

## Connecting Multiple IP Phones Behind a Single WLAN Adapter

Connect the IP phones to the Ethernet Switch. Connect the Mitel WLAN Adapter to the Ethernet Switch using the network cable that came with the Mitel WLAN Adapter. Connect the AC adapter to the Mitel WLAN Adapter and the AC adapter's plug to an electrical outlet.



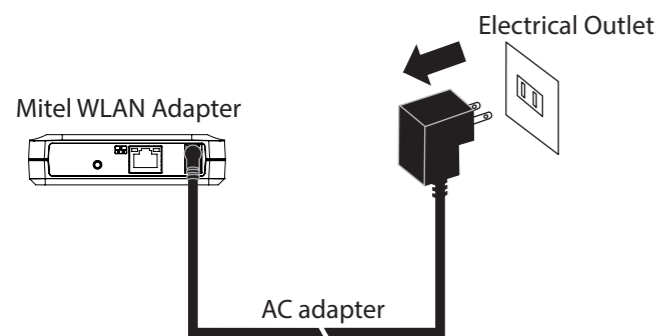
\* Some IP phones may require additional network settings. In such cases, refer to the manual that came with the IP phone.



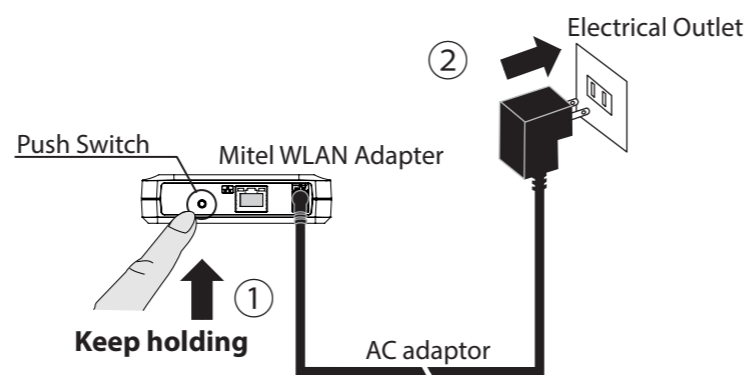
## Factory Default Configuration

How to reset the Mitel WLAN Adapter to the factory default settings is explained.

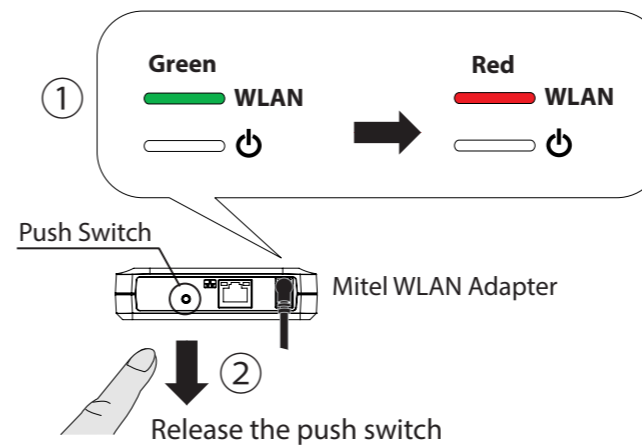
- 1 Disconnect the AC plug of the Mitel WLAN Adapter from the electrical outlet.



- 2 While reconnecting the AC plug to the outlet, press and hold the push switch at the front of the Mitel WLAN Adapter. Keep pressing and the factory default configuration will begin.



- 3 When the WLAN LED turns from Green to Red, release the switch. The factory default configuration is completed. After the factory default configuration is completed, the Mitel WLAN Adapter will restart.



## Trademarks

Wi-Fi Protected Setup(WPS) is a trademark or registered trademark of Wi-Fi Alliance.  
Other company names and product names contained in this document are trademarks or registered trademarks of their respective companies.