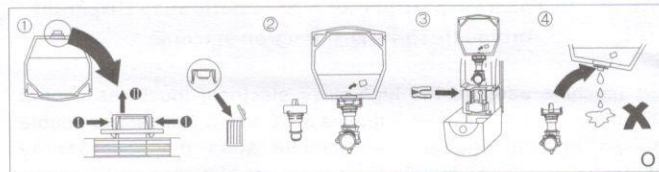
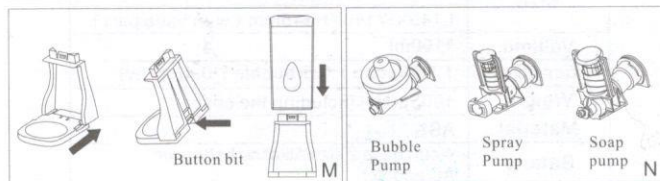
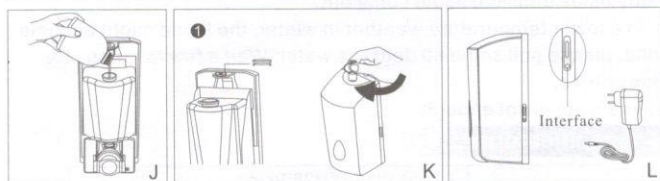
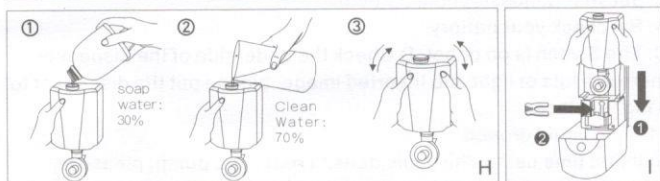
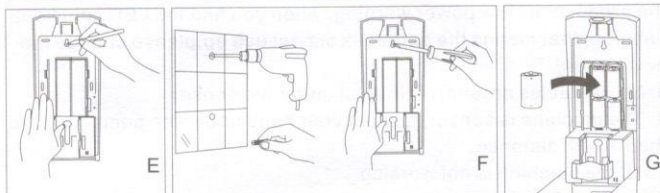
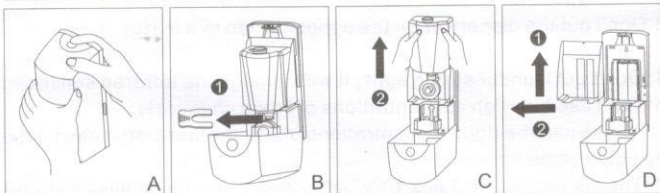


◆ Installing operational pictures



◆ Installation Steps

Step 1- A pic shows, Index finger press the key and push it toward your hand.

Step 2- B pic shows, pull out the pump fixed plate based on the arrow, take away the bottle based on the arrow.

Step 3- C pic shows, take out the bottle

Step 4- D pic shows, take away the support board based on the arrow

Step 5- E pic shows, use the bottom cover as model, mark on the wall, it is convenient to install.

Step 6- F pic shows, use the hole dicking machine to drill the hole in the marking places, insert the Rubber plug accompanied with the machine. Use the screw to fix the bottom cover on the wall.

Step 7- G pic shows, put the 4 pcs 1.5V battery in the correct method.

Step 8- H pic shows, if you need to change the soap water into foam water, you can ① put 30% soap water into the bottle. ② then put into 70% clean water. ③ at last, cover the lip and mix the liquid.

Step 9- I pic shows, put the bottle into the machine.

Step 10- J pic shows, if you use the foam soap water, you can directly put the foam soap water into the bottle.

Step 11- K pic shows, take away the key lock, insert the key and clockwise 90 degrees, then you can lock the dispenser.

Step 12- L pic shows. AC adapter can be used.

Step 13- If you bought the desktop, please take M pic as reference.

Step 14- N pic shows, there are 3 different kinds of functions, use the corresponding pumps if you change the liquid.

Step 15- O pic shows, the plastic bag can be used.