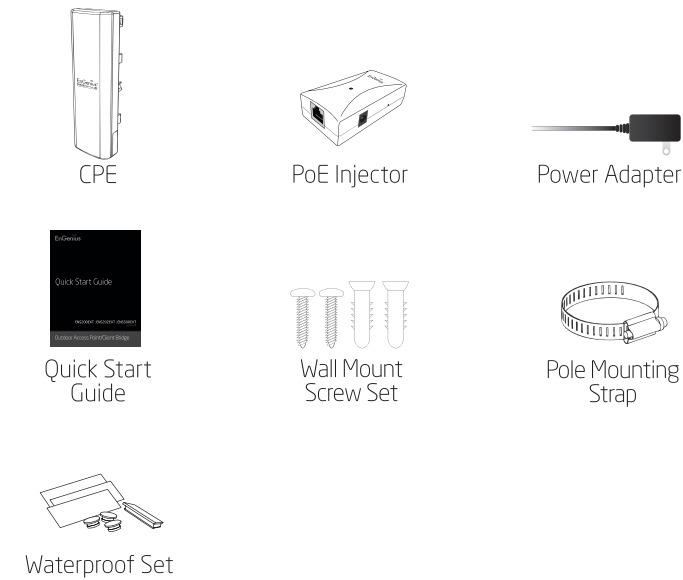


Package Contents



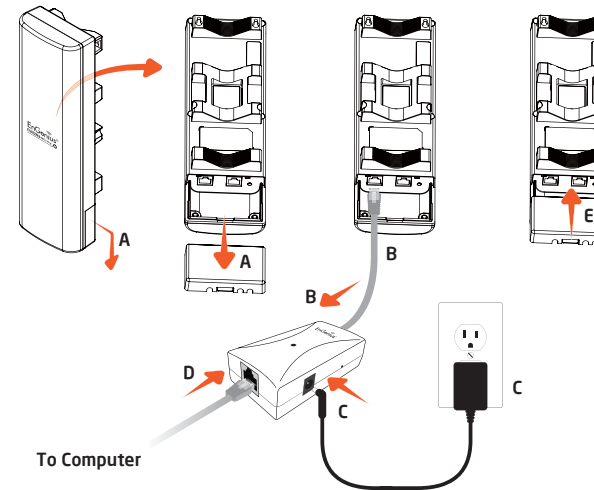
Minimum Requirements

- + Broadband Internet Service (Cable or DSL Modem)
- + Internet Browser (Internet Explorer, Safari, Firefox, Chrome)

1 Connecting the CPE

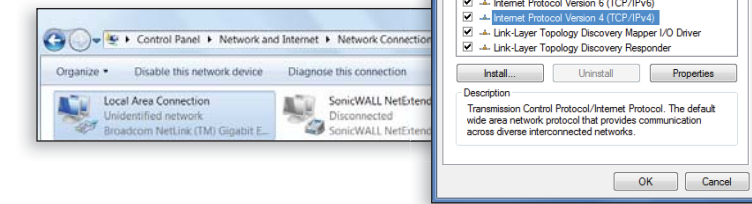
- Remove the rear bottom panel.
- Connect one end of the Ethernet cable into the LAN(PoE) port of the CPE and the other end to the PoE Ethernet port on the PoE injector.
- Connect the Power Adapter to the DC-IN port of the CPE and plug the other end into an electrical outlet.
- Connect the second Ethernet cable into the LAN port of the PoE injector and the other end to the Ethernet port on the computer.
- Place the panel removed from step A back into the device.

Note: The CPE should ONLY be powered via Ethernet cable connected to the included PoE Injector.



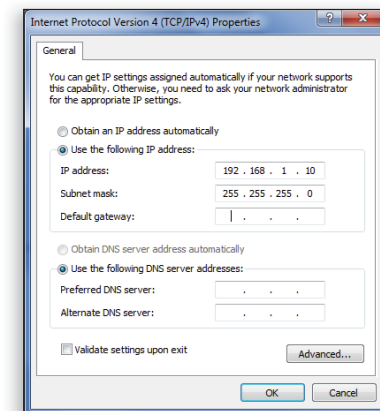
2 IP Address Configuration

- Once your computer is on, ensure that your TCP/IP is set to **On** or **Enabled**. Open **Network Connections** and then click **Local Area Connection**. Select **Internet Protocol Version 4 (TCP/IPv4)**.



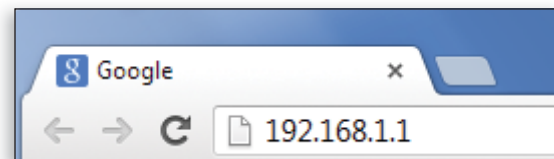
- If your Computer is already on a network, ensure that you have set it to a **Static IP Address** on the interface.

(Example: 192.168.1.10 and the Subnet Mask address as 255.255.255.0.

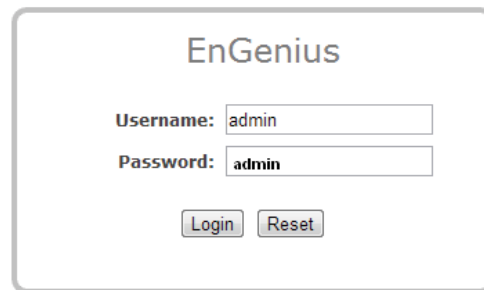


3 CPE Setup

- To configure the CPE, open a web browser. In the address bar of the web browser, enter **192.168.1.1** and hit enter.

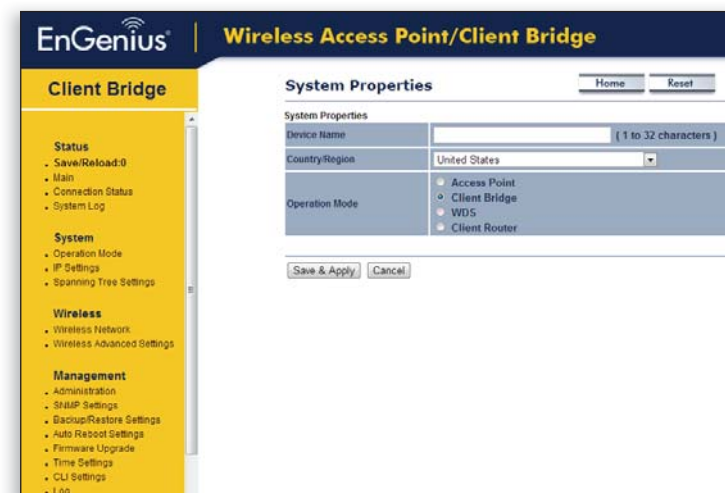


- A login screen will appear. By default, the username of the CPE is **admin** and the password is **admin**. Enter the current username and password of the CPE and then click **Login**.



4 Switching Modes

- This device can operate in the following modes: Access Point, Client Bridge, WDS and Client Router.
- Click on the **Operation Mode** link under the **System Properties**.



Technical Support

Country of Purchase	Service Center	Service Information
North America www.engeniustech.com	Canada	rma@engeniustech.com Toll Free: (+1) 888 397 2788 Local: (+1) 905 940 8181
	Los Angeles, USA	support@engeniustech.com Toll Free: (+1) 888 735 7888 Local: (+1) 714 432 8668
Central & South America es.engeniustech.com pg.engeniustech.com	Miami, USA	miamisupport@engeniustech.com Miami: (+1) 305 887 7378 Sao Paulo, Brazil: (+55) 11 3957 0303 D.F. Mexico: (+52) 55 1163 8894
	Netherlands	support@engeniustech.com (+31) 40 8200 887
Africa CIS Middle East Russia www.engeniustech.com	Dubai, UAE	support@engeniustech.com Toll Free: U.A.E.: 800-EnGenius 800-364-364-87 General: (+971) 4 357 5599
	Singapore	www.engeniustech.com/sg/e_warranty_form techsupport@engeniustech.com Toll Free: Singapore: 1800 364 3648
Asia Oceania www.engeniustech.com	Taiwan, R.O.C.	technology@senao.com

Notes

Maximum data rates are based on IEEE 802.11 standards. Actual throughput and range may vary depending on many factors including environmental conditions, distance between devices, radio interference in the operating environment, and mix of devices in the network. Features and specifications subject to change without notice. Trademarks and registered trademarks are the property of their respective owners. For United States of America: Copyright © 2013 EnGenius Technologies, Inc. All rights reserved.