

The Finder

512 DB



0,00€

SKU: T57801.1965 | **Categories:** [2 POST LIFT](#), [LIFT](#), [OMA](#)

PRODUCT DESCRIPTION

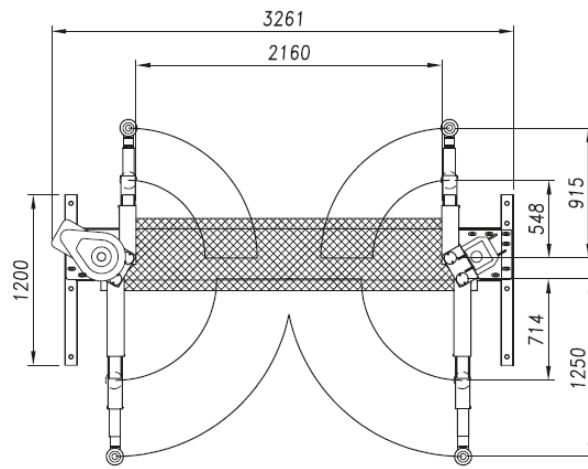
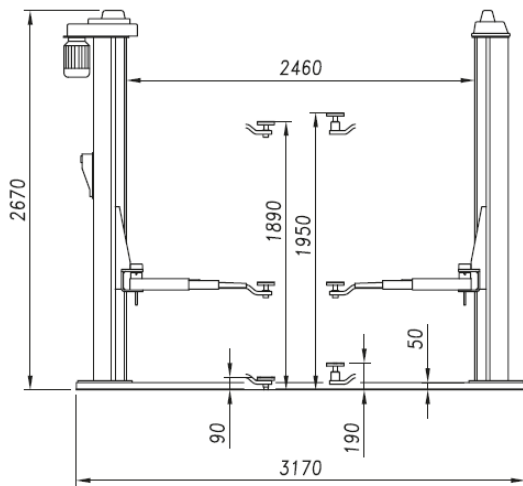
Electro-hydraulic 2 post lift

- Symmetric lift without baseframe for greater space free area at work

- Equipped with two lifting rams which do not require maintenance. Non-bearing cables for perfect synchronisation of the trolleys no matter what distribution weight is loaded
- 210I-32B | 210I-42B: Designed with short, super lowered three-stage arms parallel to the floor: ideal for lifting low, long wheel based vehicles.
- 210I-42SMB: designed with 4 extended three-stage arms: ideal for lifting vans and long wheel based vehicles
- Pads min. height 95 mm. only
- Safety valves protecting to prevent overloads and breakages of hydraulic hoses
- Descent velocity controlled by hydraulic valve
- Mechanical support device with automatic activation and deactivation by means of electro-magnetic valve insuring maximum safety during locking procedures
- Operation: electro-hydraulic

TECHNICAL DATA

Capacity	3200 kg
Weight	690 kg
Lifting/lowering	37/37
Lifting height	2011 mm
Motor	2,2 kW – 230-400 V/50 Hz 3 ph



FEATURES



Dead man controls, 24V



Dead man controls, 24V



Arms suitable for quick drop-in extensions