

# The Finder

**513 DB**



**0,00€**

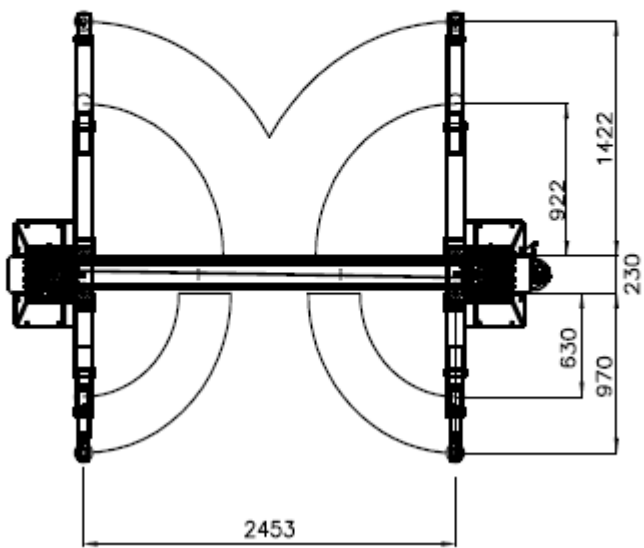
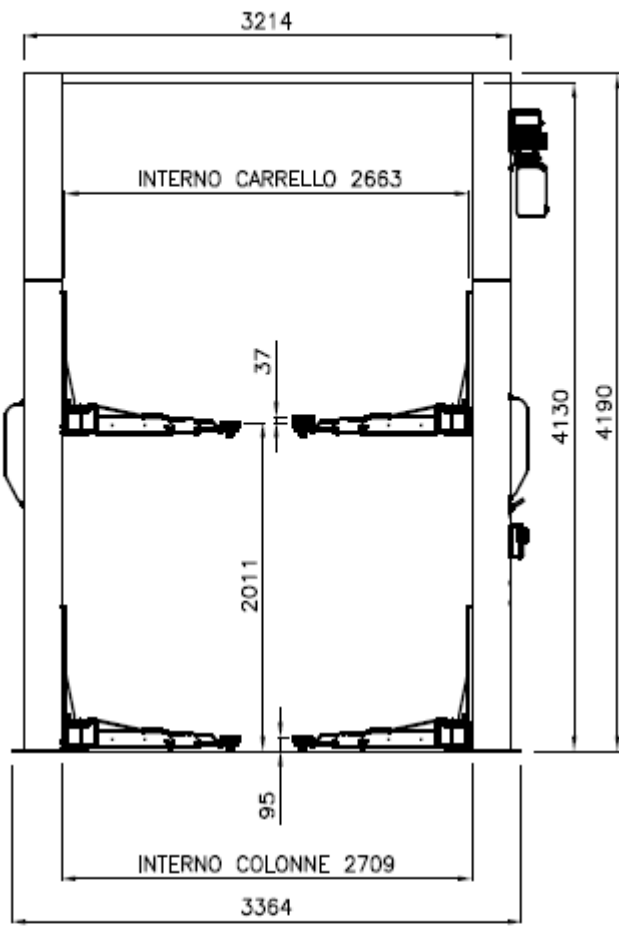
## PRODUCT DESCRIPTION

Electro-hydraulic 2 post lift

- Asymmetric lift without baseframe for greater space free area at work
- Equipped with two lifting rams which do not require maintenance. Non-bearing cables for perfect synchronisation of the trolleys no matter what distribution weight is loaded
- 210I-32BLUX | 210I-42BLUX: Designed with 4 short, super lowered three-stage arms with profile parallel to the floor for the asymmetric lifting of wide low profile vehicles. Pads min. height 95 mm only
- 210I-42SMBLUX: 4 extended three-stage arms: ideal for lifting vans and long wheel based vehicles, whilst perfect for standard vehicles. Pads minimum height 95 mm. only
- Overload valve and safety valve in case of hydraulic hose failures
- Descent velocity controlled by means of hydraulic valve
- Mechanical support device with automatic activation and deactivation by means of electro-magnetic valve insuring maximum safety during locking procedures
- Operation: electro-hydraulic

# TECHNICAL DATA

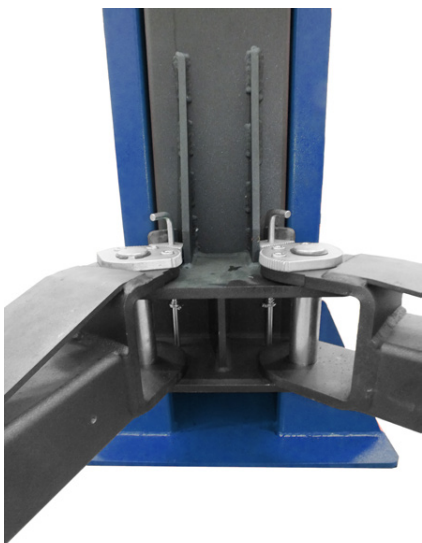
Capacity	4200 kg
Weight	715 kg
Lifting/lowering	37/37
Lifting height	2011 mm
Motor	2,2 kW – 230-400 V/50 Hz 3 ph



# FEATURES

☒

☒



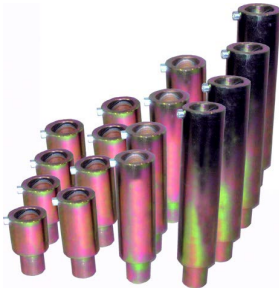
Automatic locking & unlocking of arms during on floor



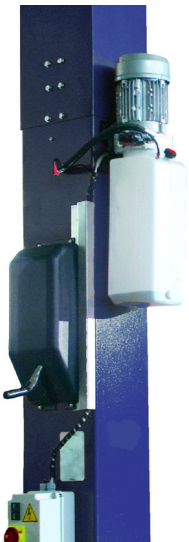
Dead man controls, 24V



Arms suitable for quick drop-in extensions



Lifting pad extensions (4 pcs set)



Single-phase motor