



**WI-PS210G**  
**8FE+2GE Ports 48V Long Range PoE**  
**Switch**  
**with 8-Port PoE**  
**Data sheet**

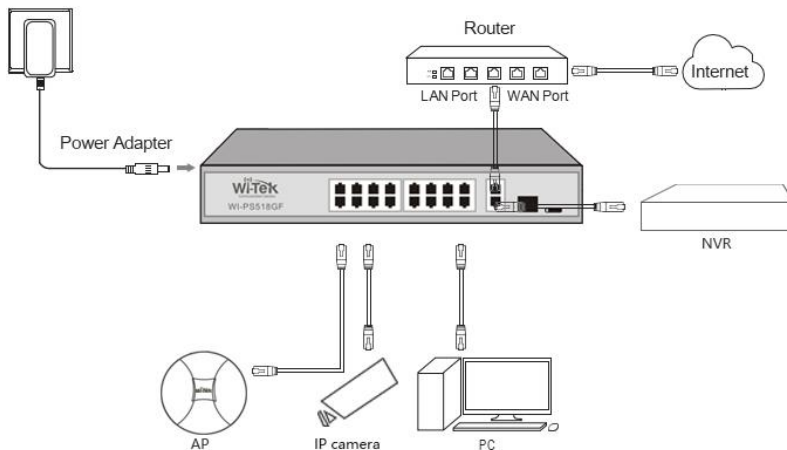
## Highlights

- 8 FE+2 GE Ports with 8 PoE ports, 2 Gigabit Up-link Ports
- Support Smart PoE Watchdog function
- Port 1 supports 802.3bt 60W Hi PoE
- Supports PoE power up to 30W for Port 2-8
- Supports 250meters Long-Range PoE transmit
- Supports PoE IEEE 802.3af/at/bt compliant PDs
- Internal power adapter supply 120W output power
- Support Port VLAN (Port isolation)
- Support Wall-Mount installation
- LED indicators for LINK/ACT, Power, PoE Status, 100Mbps, 1000Mbps
- 4K entry MAC address table with auto-learning and auto-aging

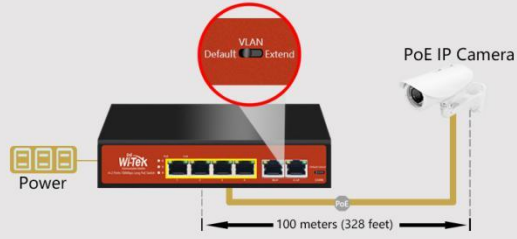
## Product



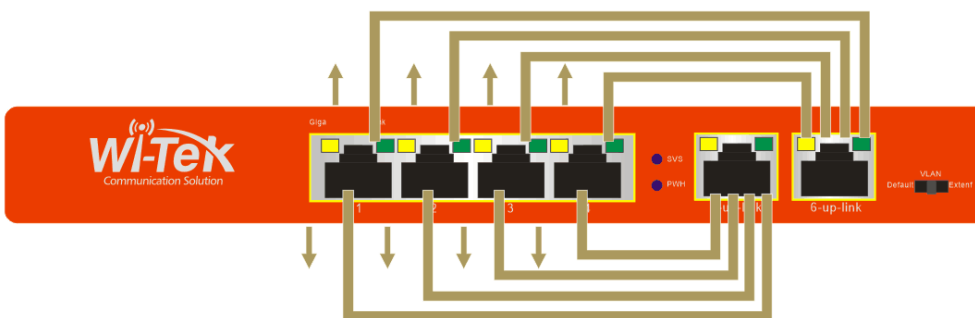
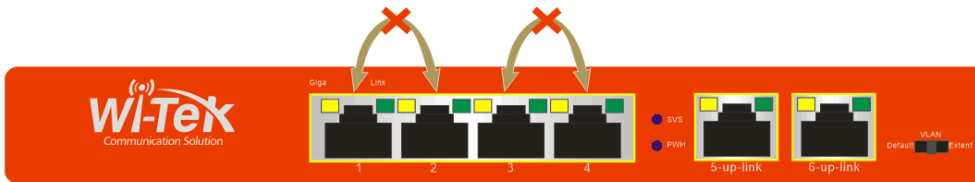
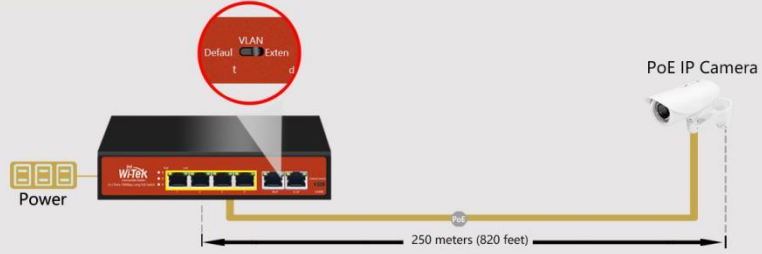
## Typical Applications



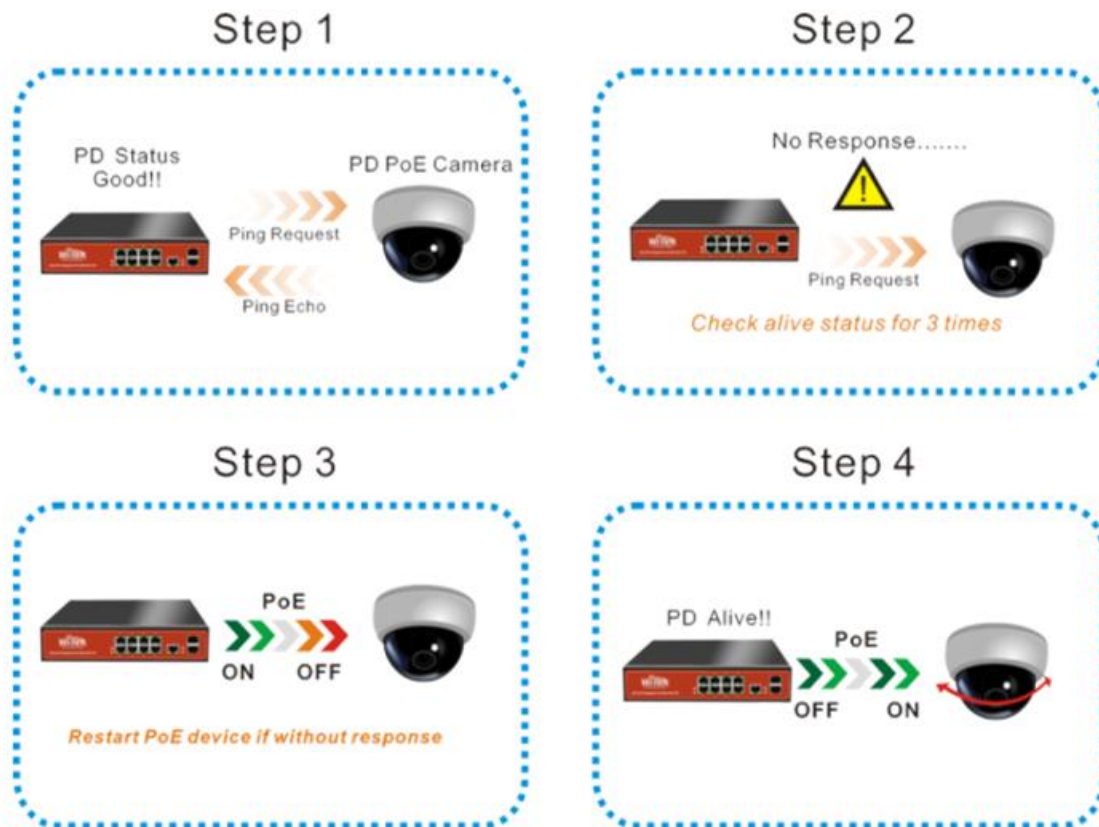
## Standard PoE Mode



## Extend PoE Mode



## Monitors compliant PD with smart watchdog function.



### Description

#### what this product does

WI-PS210G is a 8\*100Mbps+2 gigabit Ports unmanaged switch that requires no configuration and provides 8 PoE ports. The switch provides an easy way to expand your wired network. All 10 ports support auto-MDI/MDIX, eliminating the need to worry about the type of cable to use. Featuring full duplex mode, the WI-PS210G can process data at a rate of up to 2000Mbps making it an ideal choice for expanding your high performance wired network. Moreover, with innovative energy-efficient technology, the WI-PS210G can save up to 60% of power consumption, making it an eco-friendly solution for your home or office network. WI-PS210G also support PoE Watchdog

function which will detect Camera or Wireless AP system halted then restart PoE Port automatic to alive halted device; WI-PS210G first PoE Port support 60W Hi-PoE output, to easy power up High-Speed PTZ camera.

## High Performance

WI-PS210G Gigabit Ethernet Switch provides 8 10/100Mbps+2 gigabit Auto-Negotiation RJ45 ports. All ports support Auto MDI/MDIX function, eliminating the need for crossover cables or Uplink ports. Featuring non-blocking switching architecture, WI-PS210G forwards and filters packets at full wire-speed for maximum throughput. And IEEE 802.3x flow control for Full Duplex mode and backpressure for Half Duplex mode alleviate the traffic congestion and make WI-PS210G work reliably.

## Easy to Use

The auto features of this Ethernet switch make installation plug and play and hassle-free. No configuring is required. Auto MDI/MDIX eliminates the need for crossover cables. Auto-negotiation on each port senses the link speed of a network device (10, 100,1000 Mbps) and intelligently adjusts for compatibility and optimal performance.

## Specifications

HARDWARE FEATURES	
<b>Interface</b>	8 10/100Mbps RJ45 Ports 2 100/1000Mbps RJ45 Ports
<b>Network Media</b>	10/100/1000 BASE-TX: UTP category 5 or better

## HARDWARE FEATURES

	(maximum 100m)
<b>Fan Quantity</b>	Fanless
<b>Power Budget</b>	120W
<b>Internal Power Supply</b>	AC110-240V 50/60Hz
<b>PoE Ports (RJ45)</b>	Standard: 802.3 af/at/bt compliant PoE Ports: Port1- Port8
<b>Backplane Bandwidth</b>	5.6Gbps
<b>Mac Address Table</b>	4K
<b>Packet Forwarding Rate</b>	4.1Mpps
<b>Buffer</b>	768Kb
<b>Jumbo Frame</b>	10240Bytes
<b>Dimensions</b>	210mm*150mm*35mm (L*W*H)
<b>Protection Leve</b>	Lightning protection 6KV 6KV ESD Contact discharge

## SOFTWARE FEATURES

<b>Transmission Method</b>	Store-And-Forward
<b>Advanced Functions</b>	Priority Function Mac Address Auto-Learning And Auto-Aging Store and forward IEEE 802.3x flow control for Full-duplex Mode Backpressure for Half-duplex Mode

## OTHERS

<b>Certification</b>	CE, FCC, RoHS
<b>Package Contents</b>	POE Switch Electric Line Wall-Mount Kit Guide Book/Warranty Card
<b>Environment</b>	Operating Temperature: -10°C~55°C



WIRELESS-TEK TECHNOLOGY LIMITED  
www.wireless-tek.com  
Email: sales@wireless-tek.com  
Technical Support: tech@wireless-tek.com