

GS-60

Core Alignment Fusion Splicer

6 motors



Grandway and Fujikura have cooperated for more than 20 years.



Grandway was founded in Shanghai.

1997

Go to overseas

2020

1994

General agent of Fujikura in China.

2004

100+ patents
300+ employees
Products and services over 200 countries.

High Performance Splicer



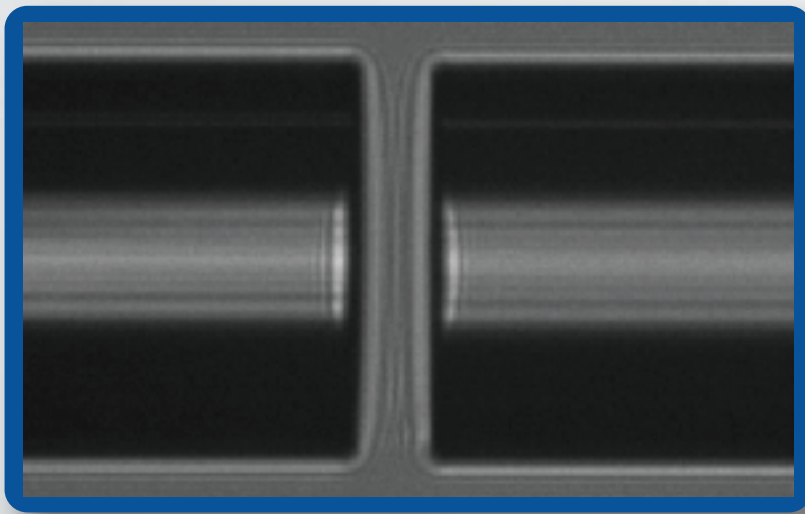
25 sec
Heating time

9 sec
Fast splice time

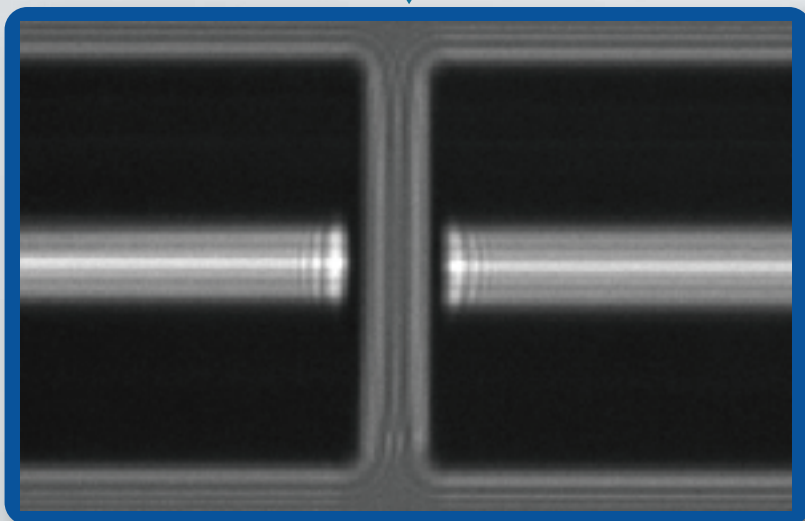
5 inches
Touch screen LCD

6 Motors Splicer

Core to core alignment & less splice loss



Before focusing



After focusing

Appearance



Front



Top



Side



Bottom

Automatic Heater

The fiber will be automatically heated when it is put into the heater.



Large Angle Flip

The touch screen can be turned over at a wide-angle while the image will flip 180 degrees automatically.



Detachable Battery

Convenient for users to change batteries



Cooling Tray

The heated sleeve can be placed on the cooling tray for cooling.



4 In 1 Fiber Holder

250 μ m

900 μ m

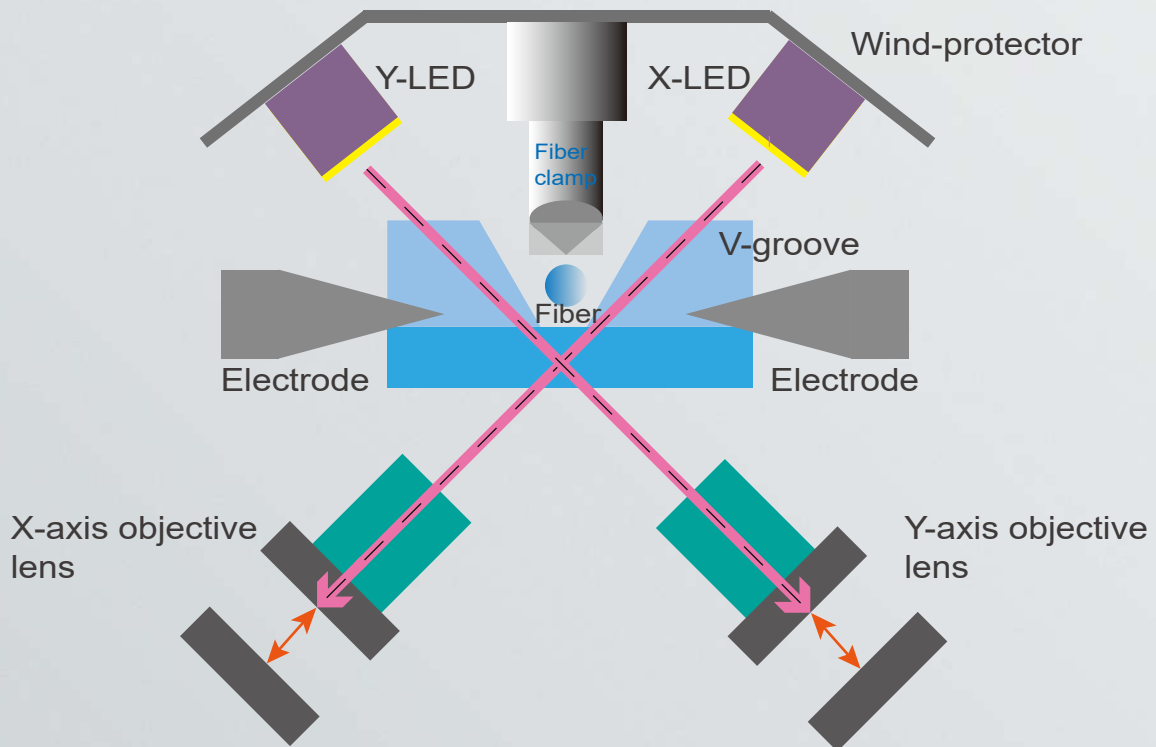
2mm-3mm fiber

Drop cable



Free Of Reflection Mirror

Prevent imaging blur caused by mirror fogging



11 Languages For Selection

Applicable to different countries



Dustproof, Rainproof And Shockproof

Suitable for desert, rainfall, high altitude and high temperature.



Rain



Dust



Drop

Specification



Model	GS-60
Alignment	6 motors core alignment
Fiber Type	SMF (G.652), MMF (G.651), DSF (G.653), NZ-DSF (G.655), BIF (G.657), EDF
Fiber Type	Cladding: 80~150 μ m, coating: 100~1000 μ m
Cleave Length	8-16mm
Display	5 inch touch screen LCD
Splice Loss	MMF \leq 0.01dB (Typical); SMF/BIF \leq 0.02dB (Typical); DSF/NZDSF/EDF \leq 0.04dB (Typical)
Splice Time	\leq 9s (SM Fast mode)
Heating Time	25s, adjustable
Return Loss	\geq 60dB
Data Storage	5000 splice records , 100 screenshots
Tension Test	2N
Protection Sleeve	40mm - 60mm
Electrode Life	5000 splices
Imaging System	Dual CMOS cameras, 200X Zoom
Power Supply	4400mAh lithium battery
Battery Life	\geq 150 splicing and heating cycle
Data Port	USB
Size	125x125x135mm (L x W x H)
Weight	1.5Kg (with battery)
Working Condition	-25 $^{\circ}$ C~+50 $^{\circ}$ C/-30 $^{\circ}$ C~+70 $^{\circ}$ C(Working/Storage)
	Humidity: \leq 90% (Non-condensing)
	Altitude:0 m~5000 m,Wind Speed \leq 15 m/s

Standard Package



GS-60 splicer



Cleaver



AC Adapter



Straps of Fusion Splicer



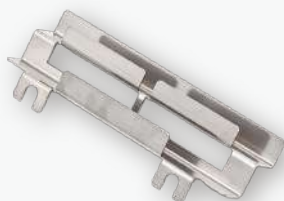
AC power cord



Battery Pack



Carrying Case



Cooling Tray



Documents



Data Transfer Cable



Straps of Carrying Case

Shanghai Grandway Telecom Tech. Co., Ltd.

+86-21-54451260/61/62

+86-21-54451266

www.grandway.com.cn

6F, Xin' A n Building, No.99 Tian Zhou Road,
Caohejing Hi-Tech Park, Shanghai ,200233, China