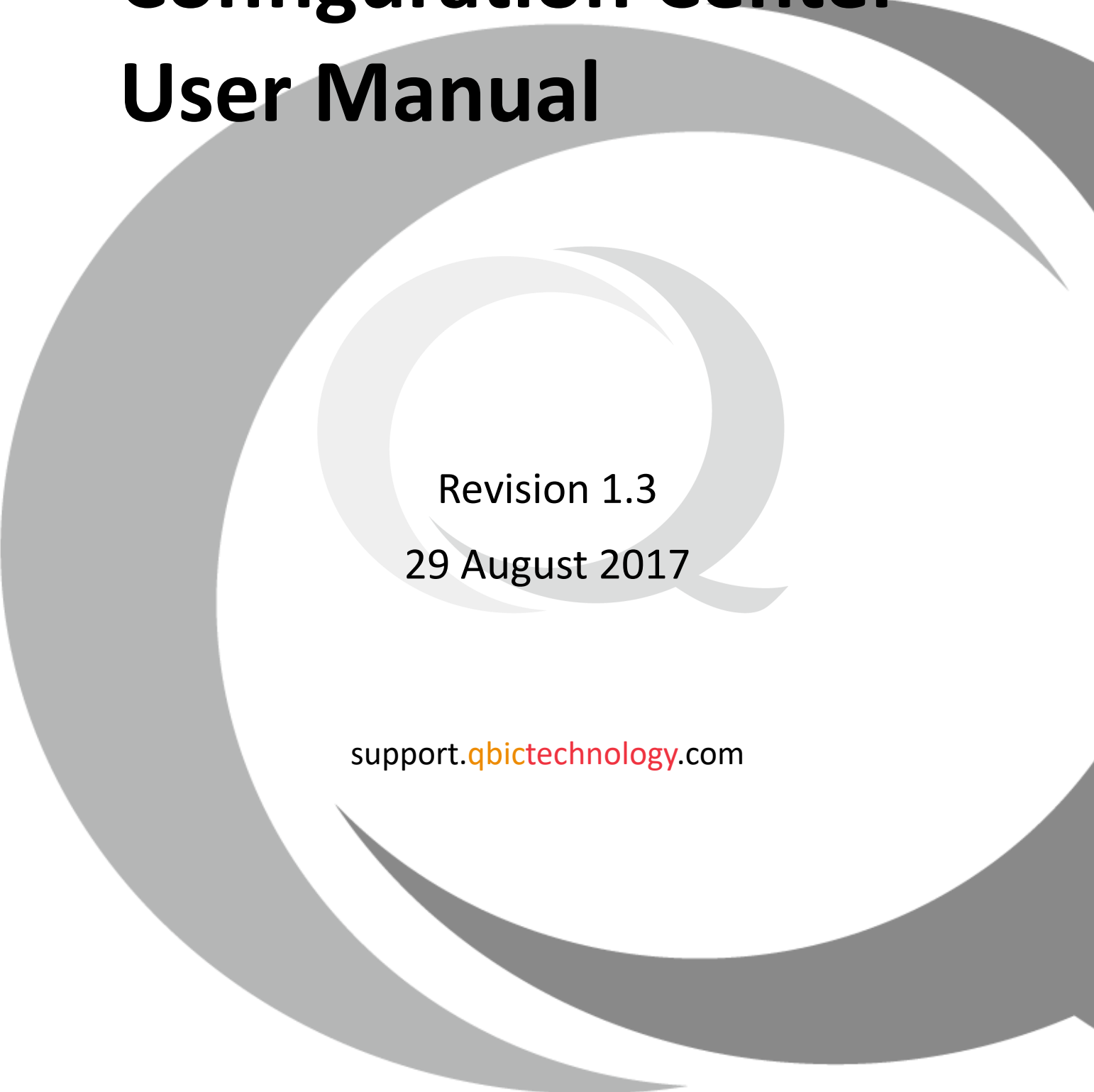


# Qbic Remote Configuration Center User Manual



Revision 1.3

29 August 2017

support.[qbictechnology.com](http://qbictechnology.com)

## TABLE of CONTENTS

INTRODUCTION .....	2
FIRMWARE REQUIREMENT.....	2
NETWORK STRUCTURES.....	3
DEVICE CONFIGURATION.....	4
EXPORT IMPORT SETTINGS .....	7
REMOTE CONFIGURATION EXAMPLE.....	11

---

## INTRODUCTION

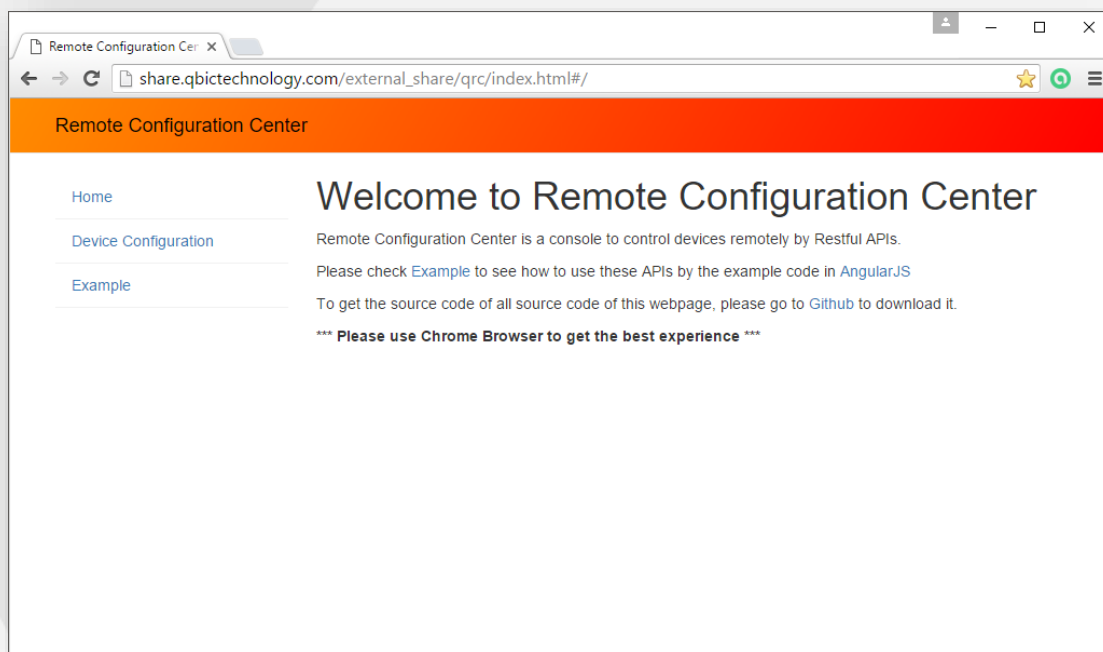
---

Managing numbers of devices in a large area could be a difficult task and that's why Qbic's Remote Configuration Center is created. The Settings of all Qbic's devices within your LAN can be modified remotely. You can apply your changes to an individual device, or even in batch.

The link of Qbic's Remote Configuration Center:

[http://share.qbictechnology.com/external\\_share/qrc/index.html](http://share.qbictechnology.com/external_share/qrc/index.html)

Remote Configuration Center's HOME:



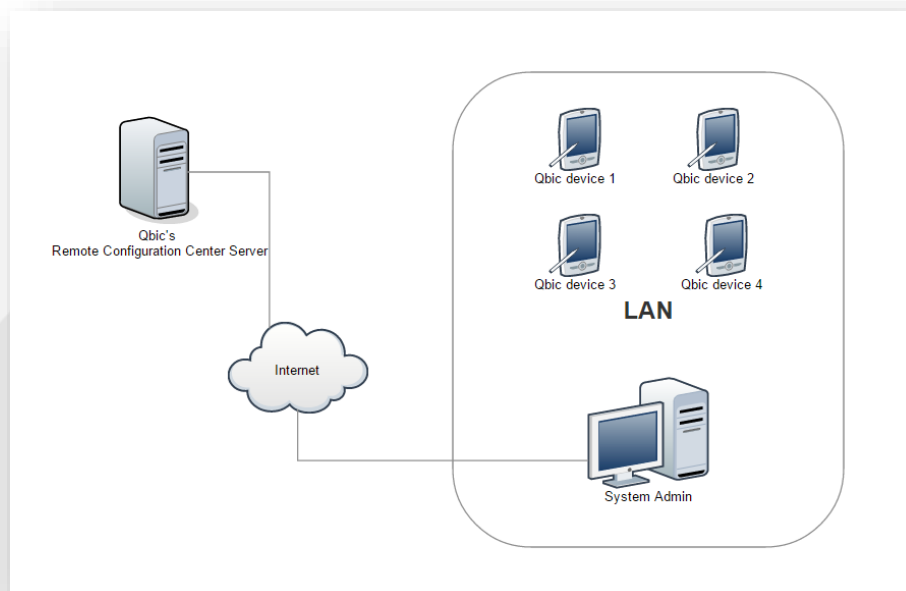
## Firmware requirement

---

- TD-1050: 1.0.12 or above
- FHD-100: 1.0.3 or above
- BXP-202/300/301: 1.0.1 or above

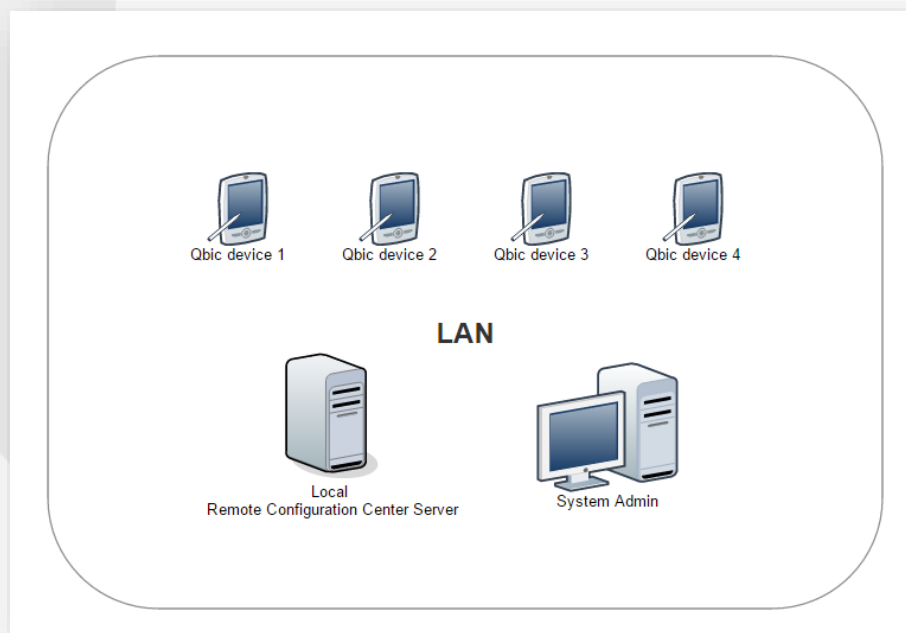
## Network Structures

Using Qbic's server:



Using your own server:

The developer can download the source code from the [github](#).



# Device Configuration

Remote Configuration Center

Home  
Device Configuration  
Example

## Remote Configure Devices

Please input ranges of the device's IP address and click SCAN to find devices.

192.168.1.1 - 192.168.10.254

➕ Add new IP range

SCAN

Step 1: Click "Device Configuration"

Step 2: Add new IP range if needed

Step 3: Click "SCAN" to find all Qbic devices within the LAN.

Clear All Inputs

Remove

All

Current Password

Settings

Remote Configuration Center

RESTful APIs v1.0.1

Home  
Device Configuration  
Example

## Remote Configure Devices

Please input ranges of the device's IP address and click SCAN to find devices.

192.168.1.1 - 192.168.1.254

➕ Add new IP range

SCAN 5 devices found

Clear All Inputs

### Configure Scanned Devices

Scanned Devices

Refresh	Status	Info	IP	Model ID	Name	APIs version	Log	Remove
				All				All
	🔄	🟢	192.168.1.84	TD-1050	06A202T100016	1.0.1	📄	✖
	🔄	🟢	192.168.1.48	BXP-301	05J003T100047	1.0.1	📄	✖
	🔄	🟢	192.168.1.54	BXP-202	05C004T100003	1.0.1	📄	✖
	🔄	🟢	192.168.1.143	FHD-100	123456789FHD	1.0.1	📄	✖
	🔄	🟢	192.168.1.179	BXP-202	05L004T100046	1.0.1	📄	✖

The found devices will listed here.

- Home
- Device Configuration
- Example

## Remote Configure Devices

Please input ranges of the device's IP address and click SCAN to find devices.

192.168.1.1 ~ 192.168.1.254

● Add new IP range

**SCAN** 5 devices found

### Configure Scanned Devices

⊗ Clear All Inputs

Scanned Devices 5

Refresh	Status	Info	IP	Model ID	Name	APIs version	Log	Remove
<input type="checkbox"/>			192.168.1.84	TD-1050	06A202T100016	1.0.1		
<input type="checkbox"/>			192.168.1.48	BXP-301	05J003T100047	1.0.1		
<input type="checkbox"/>			192.168.1.54	BXP-202	05C004T100003	1.0.1		
<input type="checkbox"/>			192.168.1.143	FHD-100	123456789FHD	1.0.1		
<input type="checkbox"/>			192.168.1.179	BXP-202	05L004T100046	1.0.1		

Current Password: .....

Settings

Step 5: Select devices

### Step 6: Enter password

- Passwords is required for making changes, if you have set passwords on selected device.

Current Password  \* Required

- Example:
  - ◆ Four selected devices are going to configure.
  - ◆ String "11111111" is entered to the "Current password" field

Device name:	Current password	Result:
Unit 1	12345678	Setting will not be changed
Unit 2	11111111	Setting will be changed
Unit 3	12345678	Setting will not be changed
Unit 4	11111111	Setting will be changed

Settings

- Time Zone: Choose a timezone
- Auto Time:  enable  disable
- 24 Hour Format:  enable  disable
- Player Name: 06A202T100016
- Player Group: [Empty field]
- Enable Password:  enable  disable
- NTP Server: ex, 0.fr.pool.ntp.org
- Content URL: http://localhost:8080/local/ZCHWR/index.smil
- ADB Enable:  enable  disable
- ADB Over TCP-IP:  enable (Port: 5555)  disable

Ethernet

Wifi >

Proxy >

Beacon >

Nfc >

Audio Volume >

Playlist log >

Remote Control >

Application Information >

Export for USB  Remote Config

Start Configuration

Default "Player Name" is device's serial number

When "enable" selected:

- "Current Password" will be the same as "Security Password".
- Launcher will be protected by screen lock

When "Disable" selected:

- There is no need to input in column "Current Password".

Step 8: Click "Start Configuration" to execute the changes



Step 9: The settings on the devices are changed

## Export Import Settings

1. Open the Remote Configuration Center:

[http://share.qbictechnology.com/external\\_share/qrc/#/configuration/](http://share.qbictechnology.com/external_share/qrc/#/configuration/)

2. Click the “Device Configuration” button on the right side:

### Device Configuration

3. Press “SCAN” to find the devices in your local network:

SCAN

4. All the Qbic’s devices in your network will be listed:

Scanned Devices ⓘ

Refresh	Status	Info	IP	Model ID	Name	APIs version	Log	Remove		
<input type="checkbox"/>			<input type="text"/>	All ▾	<input type="text"/>	<input type="text"/>		All		
<input type="checkbox"/>					192.168.1.84	TD-1050	06A202T100016	1.0.1		
<input type="checkbox"/>					192.168.1.48	BXP-301	05J003T100047	1.0.1		
<input type="checkbox"/>					192.168.1.54	BXP-202	05C004T100003	1.0.1		
<input type="checkbox"/>					192.168.1.143	FHD-100	123456789FHD	1.0.1		
<input type="checkbox"/>					192.168.1.179	BXP-202	05L004T100046	1.0.1		

5. Select a device to get settings:

<input checked="" type="checkbox"/>					192.168.1.84	TD-1050	06A202T100016	1.0.1		
-------------------------------------	--	--	--	--	--------------	---------	---------------	-------	--	--



6. The current settings of the device will be shown:

Settings ▼

<input type="checkbox"/> Time Zone	Choose a timezone <span>▼</span>
<input type="checkbox"/> Auto Time	<input checked="" type="radio"/> enable <input type="radio"/> disable
<input type="checkbox"/> 24 Hour Format	<input type="radio"/> enable <input checked="" type="radio"/> disable
<input type="checkbox"/> Player Name	06A202T100016
<input type="checkbox"/> Player Group	
<input checked="" type="checkbox"/> Enable Password	<input type="radio"/> enable <input checked="" type="radio"/> disable
<input type="checkbox"/> NTP Server	ex, 0.fr.pool.ntp.org
<input type="checkbox"/> Content URL	http://localhost:8080/local/ZCHWR/index.smil
<input type="checkbox"/> ADB Enable	<input checked="" type="radio"/> enable <input type="radio"/> disable
<input type="checkbox"/> ADB Over TCP-IP	<input type="radio"/> enable (Port: 5555) <input checked="" type="radio"/> disable

Ethernet ▶

Wifi ▶

Proxy ▶

Beacon ▶

Nfc ▶

Audio Volume ▶

Playlist log ▶

Remote Control ▶

Application Information ▶

7. Check (circled in red) the setting that required to be exported:

Settings ▼

<input type="checkbox"/> Time Zone	Choose a timezone <span>▼</span>
<input type="checkbox"/> Auto Time	<input type="radio"/> enable <input type="radio"/> disable
<input type="checkbox"/> 24 Hour Format	<input type="radio"/> enable <input checked="" type="radio"/> disable
<input type="checkbox"/> Player Name	06A202T100016
<input type="checkbox"/> Player Group	
<input checked="" type="checkbox"/> Enable Password	<input type="radio"/> enable <input checked="" type="radio"/> disable
<input type="checkbox"/> NTP Server	ex, 0.fr.pool.ntp.org
<input type="checkbox"/> Content URL	http://localhost:8080/local/ZCHWR/index.smil
<input type="checkbox"/> ADB Enable	<input type="radio"/> enable <input type="radio"/> disable
<input type="checkbox"/> ADB Over TCP-IP	<input type="radio"/> enable (Port: 5555) <input checked="" type="radio"/> disable

Ethernet ▶

Wifi ▶

Proxy ▶

Beacon ▶

Nfc ▶

Audio Volume ▶

Playlist log ▶

Remote Control ▶

Application Information ▶

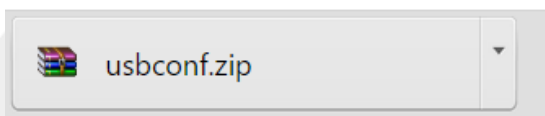
8. Select “Export for USB”:

Export for USB  Remote Config

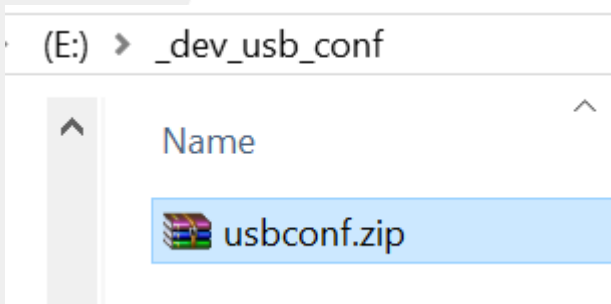
9. Click the “Export for USB” button:

Export for USB

10. A “usbconf.zip” file will be downloaded:



11. Create a folder called “\_dev\_usb\_conf” on a USB drive and copy the “usbconf.zip” to this folder:



12. Connect the USB with your device.

## Remote Configuration Example

Remote Configuration Center

Home  
Device Configuration  
Example

### Remote Configuration Example

Single Example

**Example**

IP Address

Password

ExampleCase

This example will get an access token if password you set is correct. Almost all APIs need access token to do the request. This example will get an access token then insert this token into http header as an Authentication token for following example you try. So please always run this example to get access token before running other examples.

Example code:

```
function ExampleGetAuth2Token() {
  FnName = getFnName();
  printAndAppendResult("Start Example " + FnName + "...");
  QRC.getToken(vm.example_password).then(sucFn, errFn);
  function sucFn(data) {
    printAndAppendResult("Response Content:", data);
    QRC.setTargetAuthToken(data.data.access_token);
    cacheExampleData.accessToken = data.data.access_token;
    sessionStorage.cacheExampleData = angular.toJson(cacheExampleData);
    DoneExample();
  }
  function errFn(data) {
    if (data && data.status == -1) {
      printErrorAndBreak("Cannot get response from the HTTP request. Is target IP
alive?");
    } else {
      printErrorAndBreak("Error of running " + FnName +
"\nMaybe your password is incorrect?", data);
    }
  }
}
```

Step 1: Click on "Example"

Step 2: Enter the IP of your Qbic device

Step 3: Enter password

Step 4: Select an example case

Remote Configuration Center

```
function ExampleGetAuth2Token() {
  FnName = getFnName();
  printAndAppendResult("Start Example " + FnName + "...");
  QRC.getToken(vm.example_password).then(sucFn, errFn);
  function sucFn(data) {
    printAndAppendResult("Response Content:", data);
    QRC.setTargetAuthToken(data.data.access_token);
    cacheExampleData.accessToken = data.data.access_token;
    sessionStorage.cacheExampleData = angular.toJson(cacheExampleData);
    DoneExample();
  }
  function errFn(data) {
    if (data && data.status == -1) {
      printErrorAndBreak("Cannot get response from the HTTP request. Is target IP
alive?");
    } else {
      printErrorAndBreak("Error of running " + FnName +
"\nMaybe your password is incorrect?", data);
    }
  }
}
}
```

- QRC is an AngularJS service implemented in statics/javascripts/angular/qrc/services/qrc.service.js, following function is called by this example:

```
function getToken(password_input, idx) {
  var url = buildUrl("/v1/oauth2/token", idx);
  return $http.post(url, {
    grant_type: "password",
    username: "admin",
    password: password_input,
    getConfig(idx, true));
}
```

[Try it!](#)

Start Example ExampleGetAuth2Token...  
Response Content:  
{  
 "access\_token": "o1kihgo1rb3fcr3c2ursctg4fr",  
 "refresh\_token": "f0joh2dlnvbggt0i0plapdq6i",  
 "token\_type": "Bearer"  
}

Good. Example Done. Check your target device if the change take effect.

Step 5: Read sample codes

Step 6: Click on "Try it"



Step 7: Check the changes on your device

The example list:

ExampleGetAuth2Token
<b>ExampleGetAuth2Token</b>
ExampleSetSecurityPassword
ExampleDisableWifi
ExampleChangeTimeZone
ExampleSetAudioVolume
ExampleSetContentUrl
ExampleEnablePresence
ExampleDisablePresence
ExampleGetPresencePIR
ExampleGetPresenceLight
ExampleSetPresenceLightToGreen
ExampleSetPresenceLightToRed
ExampleGetPresenceLightGearing
ExampleSetPresenceLightGearing
ExampleRebootDevice