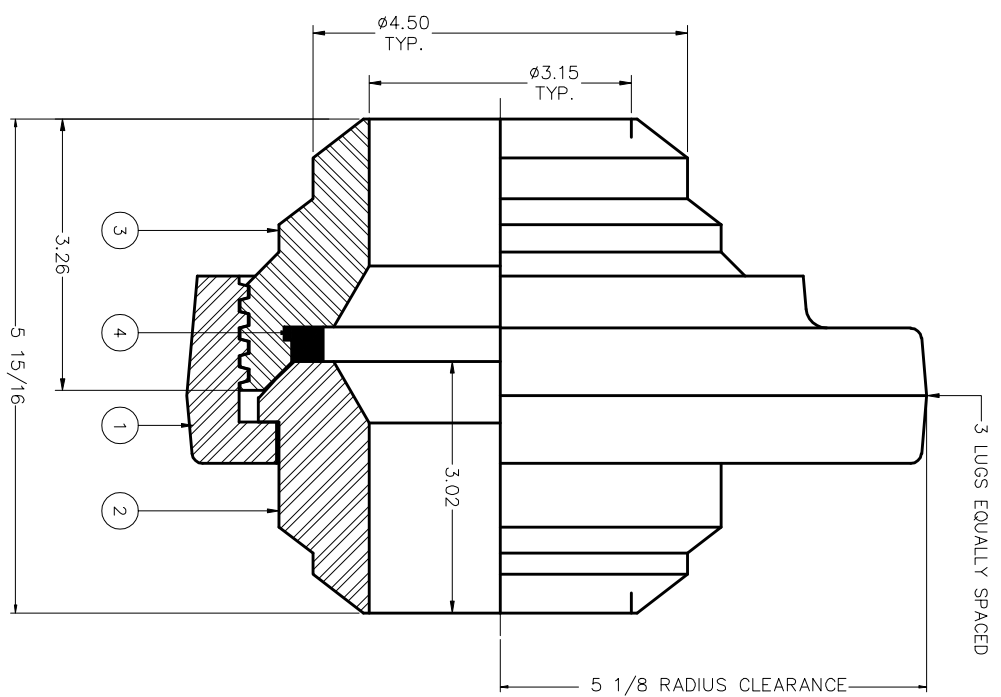


8 7 6 5 4 3 2 1

BILL OF MATERIALS

ITEM	QTY	PART NO.	DESCRIPTION	WEIGHT
1	1	0602WN0400	4" FIG 602 WING NUT	5.900
2	1	0602ME0400	4" FIG 602 MALE SUB B/W SCH XXH	4.600
3	1	0602FE0400	4" FIG 602 FEMALE SUB B/W SCH XXH	4.910
4	1	0602SE0400	4" FIG 602 ABCO SEAL	

MATERIAL: 4130
 HEAT TREATMENT : NQT
 HARDNESS : 220-237 BHN
 STANDARD CWP: 6000 PSI
 SOUR SERVICE CWP: 6000 PSI



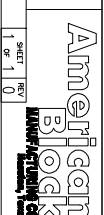
THIS DOCUMENT EMPLOYS A CONCEPTUAL, PROPRIETARY DESIGN OF WHICH AMERICAN BLOCK COMPANY RETAINS ALL PATENT AND OTHER RIGHTS INCLUDING EXCLUSIVE RIGHT OF MANUFACTURE AND SALE. THIS DOCUMENT IS SUBMITTED ONLY UNDER A CONFIDENTIAL RELATIONSHIP, AND MAY NOT BE COPIED, DISCLOSED, OR MADE PUBLIC KNOWLEDGE.

REV.	DESCRIPTION	DATE	CHANGED BY	APPROVED BY	TOLERANCES UNLESS SPECIFIED	SCALE	DATE
0	REDRAWN	08/12	RBM	WKV	XX ± .015 XXX ± .005 FRACTIONS ± 1/16	ASSEMBLY B/W SCH XXH 4" FIG 602	22/11/10

ISSUED BY	DATE	SCALE	DATE
RBM	22/11/10	1 : 1	22/11/10

DO NOT SCALE DWG.

ASSEMBLY WEIGHT-15.410 kg



8 7 6 5 4 3 2 1

ASSEMBLY WEIGHT-15.410 kg

