

## W 7.2 mm Photoelectric Sensors

# BTS Series

## INSTRUCTION MANUAL

TCD210041AA

**Autonics**

Thank you for choosing our Autonics product.

**Read and understand the instruction manual and manual thoroughly before using the product.**

**For your safety, read and follow the below safety considerations before using.**

**For your safety, read and follow the considerations written in the instruction manual, other manuals and Autonics website.**

Keep this instruction manual in a place where you can find easily.

The specifications, dimensions, etc. are subject to change without notice for product improvement. Some models may be discontinued without notice.

Follow Autonics website for the latest information.

### Safety Considerations

- Observe all 'Safety Considerations' for safe and proper operation to avoid hazards.
- ⚠ symbol indicates caution due to special circumstances in which hazards may occur.

**⚠ Warning** Failure to follow instructions may result in serious injury or death.

**01. Fail-safe device must be installed when using the unit with machinery that may cause serious injury or substantial economic loss. (e.g., nuclear power control, medical equipment, ships, vehicles, railways, aircraft, combustion apparatus, safety equipment, crime/disaster prevention devices, etc.)**  
Failure to follow this instruction may result in personal injury, economic loss or fire.

**02. Do not use the unit in the place where flammable/explosive/corrosive gas, high humidity, direct sunlight, radiant heat, vibration, impact or salinity may be present.**  
Failure to follow this instruction may result in explosion or fire.

**03. Do not disassemble or modify the unit.**  
Failure to follow this instruction may result in fire.

**04. Do not connect, repair, or inspect the unit while connected to a power source.**  
Failure to follow this instruction may result in fire.

**05. Check 'Connections' before wiring.**  
Failure to follow this instruction may result in fire.

**⚠ Caution** Failure to follow instructions may result in injury or product damage.

**01. Use the unit within the rated specifications.**

Failure to follow this instruction may result in fire or product damage.

**02. Use a dry cloth to clean the unit, and do not use water or organic solvent.**  
Failure to follow this instruction may result in fire.

### Cautions during Use

- Follow instructions in 'Cautions during Use'. Otherwise, It may cause unexpected accidents.
- When connecting an inductive load such as DC relay or solenoid valve to the output, remove surge by using diodes or varistors.
- Use the product after 0.1 sec of the power input.  
When using a separate power supply for the sensor and load, supply power to the sensor first.
- 12-24 VDC power supply should be insulated and limited voltage/current or Class 2, SELV power supply device.
- Wire as short as possible and keep it away from high voltage lines or power lines to prevent surge and inductive noise.
- When using switching mode power supply (SMPS), ground F.G. terminal and connect a condenser between 0V and F.G. terminal to remove noise.
- When using a sensor with a noise-generating equipment (e.g., switching regulator, inverter, and servo motor), ground F.G. terminal of the equipment.
- This unit may be used in the following environments.
  - Indoors (in the environment condition rated in 'Specifications')
  - Altitude max. 2,000 m
  - Pollution degree 3
  - Installation category II

### Product Components

Sensing type	Through-beam	Retroreflective	Convergent reflective
<b>Product components</b>	Product, instruction manual		
Reflector	-	MS-6	-
Bracket A	× 2	× 1	× 1
Sub bracket	× 2	× 1	× 1
M2 bolt	× 4	× 2	× 2

### Ordering Information

This is only for reference, the actual product does not support all combinations. For selecting the specified model, follow the Autonics website.

**BTS ① - ② D T ③ - ④**

#### ① Sensing distance

Number: Sensing distance (unit: mm)

Number+M: Sensing distance (unit: m)

#### ② Sensing type

T: Through-beam

M: Retroreflective

L: Convergent reflective

#### ③ Operation mode

L: Light ON

D: Dark ON

#### ④ Control output

No mark: NPN open collector output

P: PNP open collector output

### Sold Separately

- Reflector: MS Series
- Retroreflective tape: MST Series
- Bracket B
- Slit for through-beam type: BTS1M-ST (sticker), BTS1M-ST-T (SUS material)

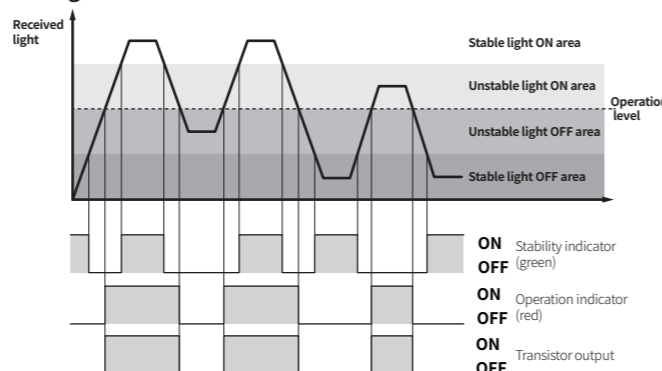
### Cautions during Installation

- Be sure to install this product by following the usage environment, location, and specified ratings. Consider the listed conditions below.
  - Installation environment and background (reflected light)
  - Sensing distance and sensing target
  - Direction of target's movement
  - Feature data
- When installing multiple sensors closely, it may result in malfunction due to mutual interference.
- For installation, tighten the screw with a torque of 0.3 N m. Mount the brackets correctly to prevent the twisting of the sensor's optical axis.
- Do not impact with a hard object or bend the cable excessively. That could decrease the product's water resistance.
- Use this product after the test. Check whether the indicator works appropriately for the positions of the detectable object.

Through-beam	Retroreflective	Reflective
Emitter - Receiver: Install to face each other	Sensor - Reflector: At least 0.1 m apart, install to face each other (parallel with the sensing side of the unit)	Sensor - Sensing target: Install to face each other (parallel with the sensing side of the unit)

### Operation Timing Chart

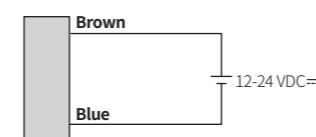
#### ■ Light ON mode



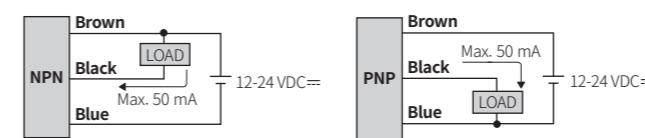
- In Dark ON mode, the waveforms are reversed.

### Connections

#### ■ Emitter

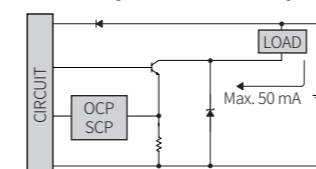


#### ■ Receiver, Retroreflective, Convergent reflective type

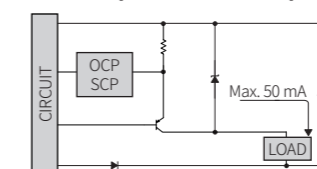


### Circuit

#### ■ NPN open collector output



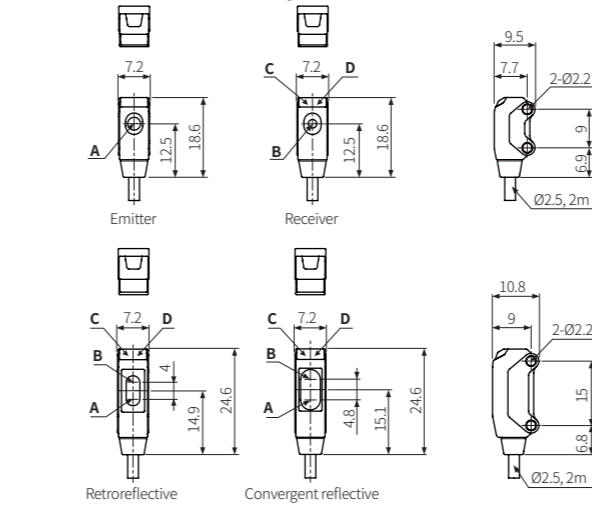
#### ■ PNP open collector output



- OCP (over current protection), SCP (short circuit protection)
- If short-circuit the control output terminal or supply current over the rated specification, normal control signal is not output due to the protection circuit.

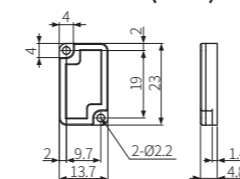
### Dimensions

- Unit: mm, For the detailed drawings, follow the Autonics website.

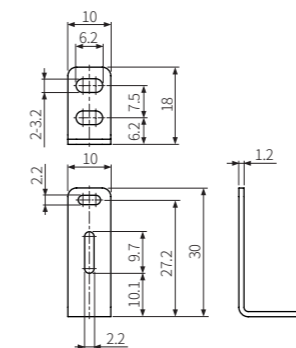


<b>A</b>	Optical axis of emitter	<b>C</b>	Operation indicator (red)
<b>B</b>	Optical axis of receiver	<b>D</b>	Stability indicator (green)

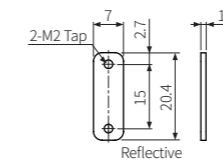
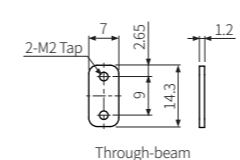
#### ■ Reflector (MS-6)



#### ■ Bracket A



#### ■ Sub-bracket



### Specifications

Model	BTS1M-TDT□-□	BTS200-MDT□-□	BTS□-LDT□-□
<b>Sensing type</b>	Through-beam	Retroreflective	Convergent reflective
<b>Sensing distance</b>	1 m	10 to 200 mm <sup>(01)</sup>	5 to 15 mm <sup>(02)</sup>   5 to 30 mm <sup>(03)</sup>
<b>Sensing target</b>	Opaque materials	≥ Ø 27 mm Opaque materials	Opaque materials, translucent materials
<b>Min. sensing target</b>	≥ Ø 2 mm	≥ Ø 2 mm <sup>(04)</sup>	≥ Ø 0.15 mm <sup>(04)</sup>
<b>Hysteresis</b>	-	-	≤ 15 % of sensing distance
<b>Response time</b>	≤ 1 ms		
<b>Light source</b>	Red		
<b>Peak emission wavelength</b>	650 nm		
<b>Operation mode</b>	Light ON mode / Dark ON mode model		
<b>Indicator</b>	Operation indicator (red), stability indicator (green)		
<b>Approval</b>	CE ENEC	CE ENEC	CE ENEC
<b>Unit weight (packaged)</b>	≈ 40 g (≈ 65 g)	≈ 25 g (≈ 45 g)	≈ 25 g (≈ 45 g)

- 01) Reflector (MS-6)
- 02) Non-glossy white paper 50 × 50 mm
- 03) Sensing distance 100 mm
- 04) Sensing distance 10 mm

<b>Power supply</b>	12-24 VDC± ±10 % (ripple P-P: ≤ 10%)
<b>Current consumption</b>	It depends on the sensing type
Through-beam	Emitter: ≤ 20 mA, receiver: ≤ 20 mA
Reflective	≤ 20 mA
<b>Control output</b>	NPN open collector output / PNP open collector output model
Load voltage	≤ 26.4 VDC±
Load current	≤ 50 mA
<b>Residual voltage</b>	NPN : ≤ 1 VDC±, PNP : ≤ 2 VDC±
<b>Protection circuit</b>	Reverse power protection circuit, output short overcurrent protection circuit
<b>Insulation resistance</b>	≥ 20 MΩ (500 VDC± megger)
<b>Noise immunity</b>	±240 VDC± the square wave noise (pulse width: 1 μs) by the noise simulator
<b>Dielectric strength</b>	1,000 VAC ~ 50/60 Hz for 1 min
<b>Vibration</b>	1.5 mm double amplitude at frequency of 10 to 55 Hz (for 1 min) in each X, Y, Z direction for 2 hours
<b>Shock</b>	500 m/s <sup>2</sup> (≈ 50 G) in each X, Y, Z direction for 3 times
<b>Ambient illuminance (receiver)</b>	Sunlight: ≤ 10,000 lx, incandescent lamp: ≤ 3,000 lx
<b>Ambient temperature</b>	-20 to 55 °C, storage: -30 to 70 °C (no freezing or condensation)
<b>Ambient humidity</b>	35 to 85 %RH, storage: 35 to 85 %RH (no freezing or condensation)
<b>Protection rating</b>	IP67 (IEC standard)
<b>Connection</b>	Cable type
<b>Cable spec.</b>	Ø 2.5 mm, 3-wire (emitter: 2-wire), 2 m
<b>Wire spec.</b>	AWG 28 (0.08 mm, 19-core), insulator outer diameter: Ø 0.9 mm
<b>Material</b>	Case: PBT, sensing part: PMMA, bracket: SUS304, bolt: SWCH10A