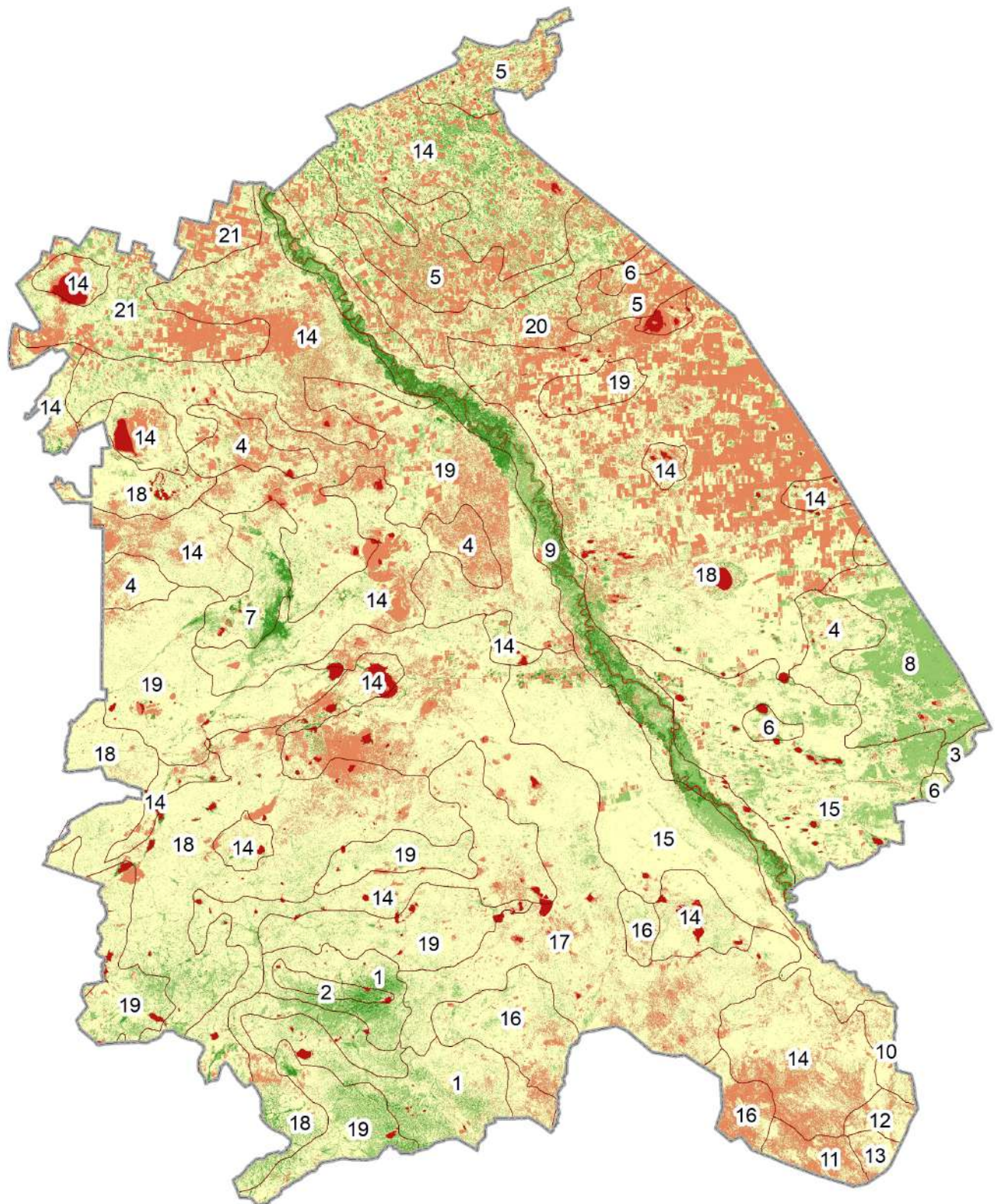









Map of degradation of pasture soil cover of the Pavlodar region of the RK



Legend:

degree of degradation of the soil cover:

-  high (incl., water/cloud)
-  from high to moderate
-  moderate
-  from moderate to low
-  low

soil types:

- | | |
|------------------------------------|--|
| 1 - Mountain chestnut | 12 - Light chestnut solonetzic |
| 2 - Mountain steppe chestnut | 13 - Light chestnut solonetzic solontsy |
| 3 - Meadow-chestnut | 14 - Solontsy |
| 4 - Meadow-chestnut solonets | 15 - Medium brown |
| 5 - Meadow- chernozem solonets | 16 - Medium-brown underdeveloped |
| 6 - Meadow | 17 - Medium-chestnut solonetzic solontsy |
| 7 - Meadow solonets | 18 - Dark brown underdeveloped |
| 8 - Sands | 19 - Dark chestnut solonetzic solontsy |
| 9 - Floodplain-meadow | 20 - Southern chernozems |
| 10 - Light chestnut | 21 - Southern carbonate chernozems |
| 11 - Light chestnut underdeveloped | |

1:2 400 000