

CS

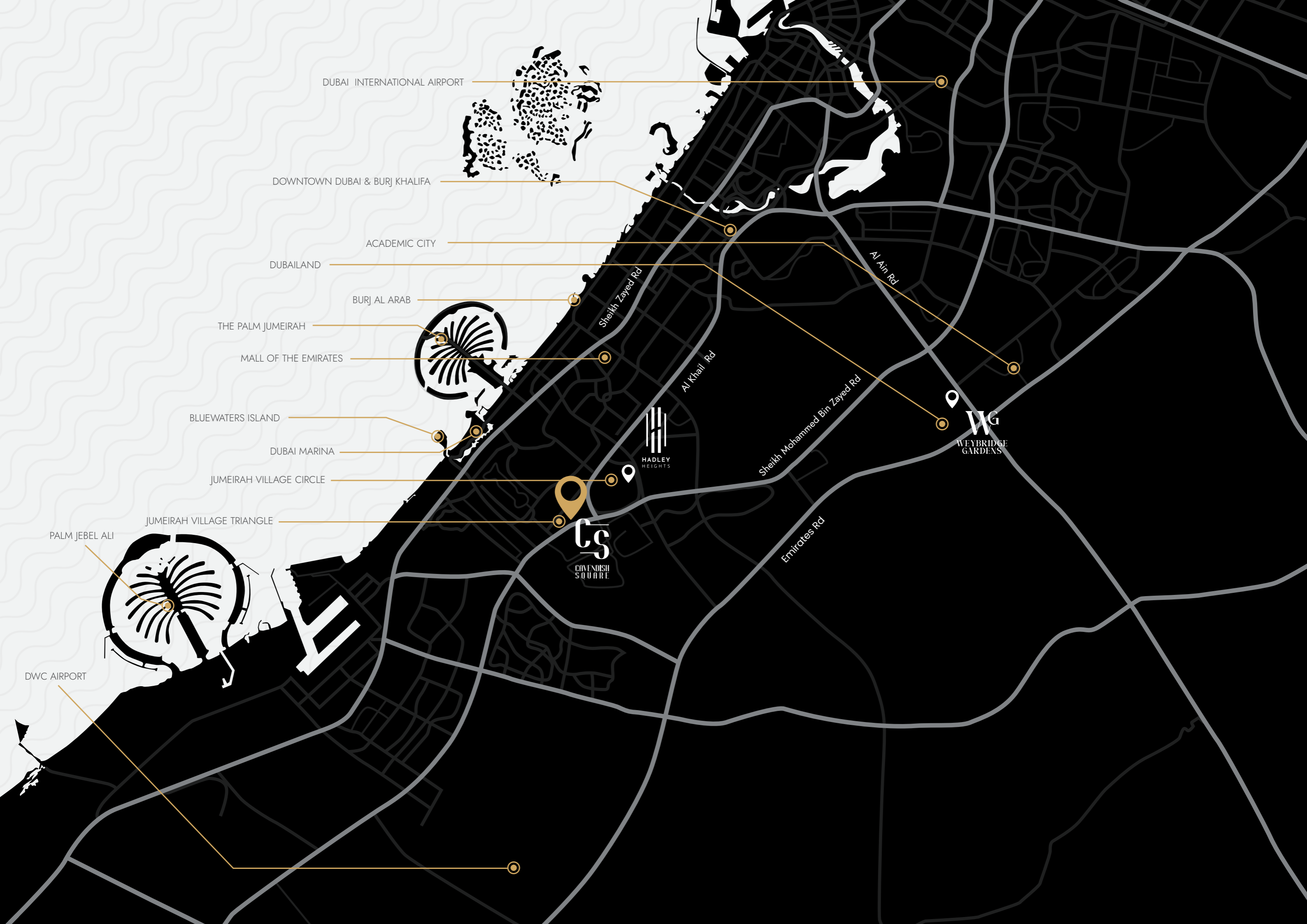
CAVENDISH
SQUARE



JUMEIRAH VILLAGE TRIANGLE

Jumeirah Village Triangle offers a strategic location and excellent connectivity to all areas of the city. Close to a wide variety of lifestyle and sports attractions, schools, colleges, clinics and hospitals, Jumeirah Village Triangle is an increasingly popular residential address with expats.

Jumeirah Village Triangle предлагает стратегическое расположение и отличную связь со всеми районами города. Рядом с разнообразными объектами для активного образа жизни и спорта, школами, колледжами, клиниками и больницами, Jumeirah Village Triangle становится всё более популярным местом для проживания среди иностранцев.



DUBAI INTERNATIONAL AIRPORT

DOWNTOWN DUBAI & BURJ KHALIFA

ACADEMIC CITY

DUBAILAND

BURJ AL ARAB

THE PALM JUMEIRAH

MALL OF THE EMIRATES

BLUEWATERS ISLAND

DUBAI MARINA

JUMEIRAH VILLAGE CIRCLE

JUMEIRAH VILLAGE TRIANGLE

PALM JEBEL ALI

DWC AIRPORT

Sheikh Zayed Rd

Al Kheil Rd

Al Ain Rd

Sheikh Mohammed Bin Zayed Rd

Emirates Rd

HADLEY HEIGHTS

CS
COVENDISH SQUARE

WG
WEYBRIDGE GARDENS

KITCHENS

Every kitchen is beautifully designed with quartz worktops, premium quality wooden cabinets, ambient LED lighting, integrated branded appliances and a breakfast bar.

КУХНЯ

Каждая кухня красиво оформлена с кварцевыми столешницами, деревянными шкафами высокого качества, атмосферным LED-освещением, встроенной бытовой техникой с известными брендами и завтрак-баром.





LIVING AREAS

Enjoy modern, open-plan living areas with high ceilings and superior quality porcelain tiles throughout. Every living area connects to a lovely sunny terrace offering pleasant neighbourhood or pool views.

ГОСТИННАЯ

Освежитесь современными, открытыми жилыми пространствами с высокими потолками и качественной плиткой из порцеланы по всему помещению. Каждая зона для проживания соединена с прекрасной солнечной террасой, предлагающей приятные виды на окрестности и бассейн.



BEDROOMS

All bedrooms feature premium quality porcelain flooring and built-in wardrobes and open out onto their own private sunny terrace. All one bedroom apartments feature their own master en-suite bathroom.

СПАЛЬНИ

Все спальни просторные и оборудованы встроенными шкафами. В каждой квартире спальни имеют выход на свою частную террасу.



BATHROOMS

Enjoy modern bathrooms with high quality grey porcelain flooring, walk-in showers, contemporary wooden cabinets, branded sanitaryware and LED downlights.

ВАННЫЕ КОМНАТЫ

Ванные комнаты выполнены в современном стиле с высококачественным серым фарфоровым полом, современными деревянными шкафами и сантехникой известных брендов.



TERRACES

All properties boast beautiful private terraces with elegant decorative terracotta panels. Premium corner one bedroom apartments feature an L-shape patio with their own hot tub.

ТЕРРАСЫ

Все апартаменты обладают красивыми частными террасами с тщательной детализацией из терракоты. У премиальных однокомнатных квартир углового расположения есть терраса формы "L" с собственной гидромассажной ванной.



ROOFTOP GARDEN

A picturesque rooftop garden crowns Cavendish Square and it's the perfect place to enjoy quality downtime and entertaining.

Beautiful greenery and a calming water feature ensure a peaceful and serene alfresco communal space for residents and guests.

Cavendish Square's rooftop is home to lush landscaping, an urban farm, a zen Japanese garden, an outdoor cinema, a pizzeria and a BBQ area.

САД НА КРЫШЕ

Живописный сад на крыше украшает Cavendish Square и является идеальным местом для качественного отдыха и развлечений.

Буйное озеленение и успокаивающий водный элемент обеспечивают спокойное и умиротворенное атмосферное общественное пространство под открытым небом для жителей и гостей.



SWIMMING POOL

Relax and unwind at the community swimming pool all-year-round and enjoy beautifully landscaped surroundings with sunbeds and in-water loungers.

БАСЕЙН

Отдыхайте и расслабляйтесь в бассейне круглый год и наслаждайтесь красиво оформленной территорией с шезлонгами и лежаками в воде.



LOBBY

Inspired by nature and The Garden of Eden, the serene lobby welcomes you with a stunning fusion of special design elements and materials.

ЛОББИ

Вдохновленный природой и Эдемским садом, умиротворенный холл встречает вас потрясающим сочетанием особых элементов дизайна и материалов.



G	Guest Parking AI Display Coworking Lounge
1	Pool Gym Garden
2/5	Apartments
R	Rooftop Lounge

LOBBY & CO-WORKING SPACE

Featuring fire-glazed green tiles, a beautiful olive tree and petal-like feature lighting, this space reflects the design DNA of LEOS' Clubhouse to provide a tranquil setting for co-working and socialising.

ЛОББИ И РАБОЧЕЕ ПРОСТРАНСТВО

С выделанными зелеными плитками, красивым оливковым деревом и светильниками, напоминающими лепестки, это пространство отражает дизайнерский стиль LEOS' Clubhouse, создавая спокойную обстановку для совместной работы и общения.



A STATE-OF-THE-ART GYM

Get your daily adrenalin rush in the community's state-of-the-art modern gym overlooking the swimming pool.

Boasting a cutting edge design, the gym incorporates modern metal and lighting elements to create a fresh and trendy environment to inspire an energetic workout routine.

СОВРЕМЕННЫЙ ЖИЛОЙ КОМПЛЕКС

Получите свою ежедневную дозу адреналина в современной тренажерной сообществе с видом на бассейн.

С гарантией современного дизайна, тренажерка включает в себя современные металлические и световые элементы, создавая свежую и стильную обстановку, вдохновляющую на энергичные тренировочные сессии.



LEOS BOXING & DANCE STUDIO

The modern, fully-equipped gym features the latest equipment and technology and is home to a LEOS boxing & dance studio.

LEOS BOXING & DANCE ACADEMY

Современный и полностью оборудованный тренажерный зал оснащен последними технологиями и оборудованием. Кроме того, здесь расположены академия бокса и студия танцев от LEOS.

HIMALAYAN TEA HOUSE

Enjoy refreshing iced teas and a variety of herbal infusions at Cavendish Square's Himalayan Tea House, located in a beautifully designed indoor space with ambient decor and landscaping.

HIMALAYAN TEA HOUSE

Наслаждайтесь освежающими ледяными чаями и разнообразными травяными настояками в Гималайском чайном домике Cavendish Square, расположенном в красивом японском саду в стиле зен.





OUTDOOR CINEMA

Kick back, relax and enjoy movie nights at the rooftop outdoor cinema. It's the perfect setting for alfresco entertaining with your friends and family.

ОТКРЫТЫЙ КИНОТЕАТР

Расслабьтесь и наслаждайтесь киноночами на крыше открытого кинотеатра. Идеальное место для отдыха на свежем воздухе в компании друзей и семьи.



GROUND FLOOR
ПЕРВЫЙ ЭТАЖ



WORLD CLASS AMENITIES

GROUND FLOOR

- 1 Reception lobby
- 2 24 hr security
- 3 A co-working space
- 4 AI supermarket
- 5 Como Lounge Café
- 6 Concierge by LEOS App
- 7 Guest valet parking

УДОБСТВА МИРОВОГО КЛАССА

ПЕРВЫЙ ЭТАЖ

- 1 Лобби
- 2 Круглосуточная охрана
- 3 Рабочее пространство (co-working space)
- 4 Искусственный интеллект супермаркет (AI supermarket)
- 5 Кафе Como Lounge
- 6 Консьерж через приложение LEOS
- 7 Предоставляется гостевая парковка



FIRST FLOOR / POOL LEVEL
ПЕРВЫЙ ЭТАЖ



ROOFTOP
КРЫША



WORLD CLASS AMENITIES

УДОБСТВА МИРОВОГО КЛАССА

FIRST FLOOR / POOL LEVEL

- 1 A state-of-the-art gymnasium
- 2 LEOS boxing studio
- 3 LEOS dance & yoga studio
- 4 A swimming pool
- 5 A pool deck with sunbeds & in-water loungers
- 6 Pool aerobics
- 7 Himalayan Tea House
- 8 Saunas
- 9 Showers & changing rooms
- 10 Outdoor seating areas

ПЕРВЫЙ ЭТАЖ / УРОВЕНЬ БАСЕЙНА

- 1 Современный тренажерный зал
- 2 LEOS Boxing Academy
- 3 LEOS Dance Academy & Зона для йоги
- 4 Бассейн
- 5 Палуба у бассейна с шезлонгами и лежаками в воде
- 6 Водные аэробика в бассейне
- 7 Гималайский чайный домик
- 8 Сауна
- 9 Душевые и раздевалки
- 10 Открытые зоны для отдыха
- 11

ROOFTOP

- 1 An urban farm
- 2 A roof garden
- 3 Outdoor seating areas
- 4 A zen Japanese garden
- 5 An outdoor cinema
- 6 Bella Napoli Pizzeria
- 7 A BBQ area

КРЫША

- 1 Городская ферма
- 2 Сад на крыше
- 3 Открытые зоны для отдыха
- 4 Японский сад Зен
- 5 Открытый кинотеатр
- 6 Пиццерия Bella Napoli
- 7 Место для барбекю



PROPERTY TYPES

ТИПЫ АПАРТАМЕНТОВ

Cavendish Square will be home to 138 apartments distributed across five residential floors.

Choose from well-appointed studios and one bedroom apartments with a good selection of different floor plan layouts.

Property sizes range from 428 – 1,209 sq.ft

Studios from 428 - 536 sq.ft

1 beds from 811 - 1,209 sq.ft

Cavendish Square предоставит 138 квартир, размещенных на пяти жилых этажах. В вашем распоряжении удобные студии и разнообразные варианты однокомнатных квартир.

Площадь квартир варьируется от 428 до 1,209 квадратных футов

Включая студии от 428 до 536 квадратных футов и однокомнатные квартиры от 811 до 1,209 квадратных футов

FLOOR
PLANS

ПЛАНИРОВКА
ЭТАЖЕЙ

UNIT 09
STUDIO
TYPE - A



TOTAL AREA

429.91 SQ.FT. 39.94 SQ.M.

TOTAL INTERNAL AREA

358.55 SQ.FT. 33.31 SQ.M.

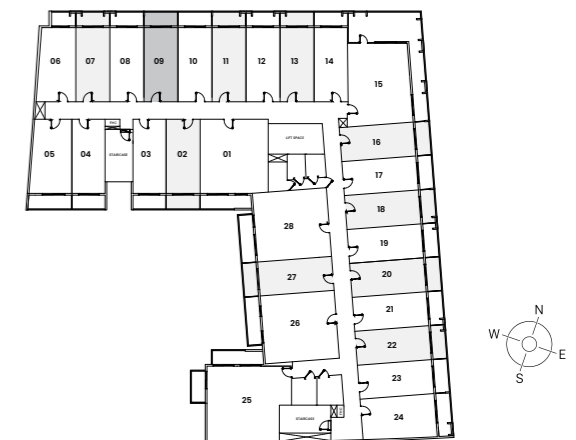
TOTAL EXTERNAL AREA

71.36 SQ.FT. 6.63 SQ.M.

VIEW UNIT SERIES

VILLA COMMUNITY 09

FLOOR PLATE

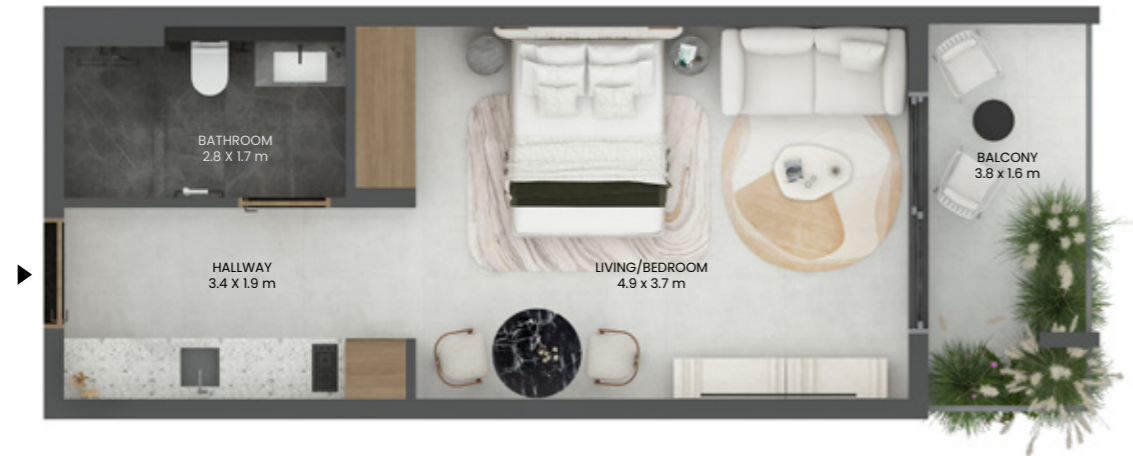


*Indicative floor plate shows the actual unit in dark grey and typical units of the same type in light grey.

*All drawings and dimensions are approximate. Drawings not to scale and are subject to change without notice. The developer reserves the right to make revisions. The units are measured at typical floor in the building and columns may vary in size depending on the floor level. The Furnishings and accessories shown are for representation only. The length and width of the Unit and balcony varies depending on which floor and which orientation the unit is located within the building to comply with the building authority regulations.

UNIT 10
STUDIO

TYPE - B



TOTAL AREA

429.91 SQ.FT. 39.94 SQ.M.

TOTAL INTERNAL AREA

358.55 SQ.FT. 33.31 SQ.M.

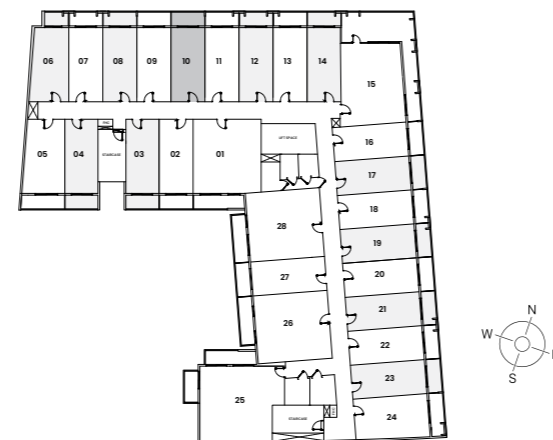
TOTAL EXTERNAL AREA

71.36 SQ.FT. 6.63 SQ.M.

VIEW UNIT SERIES

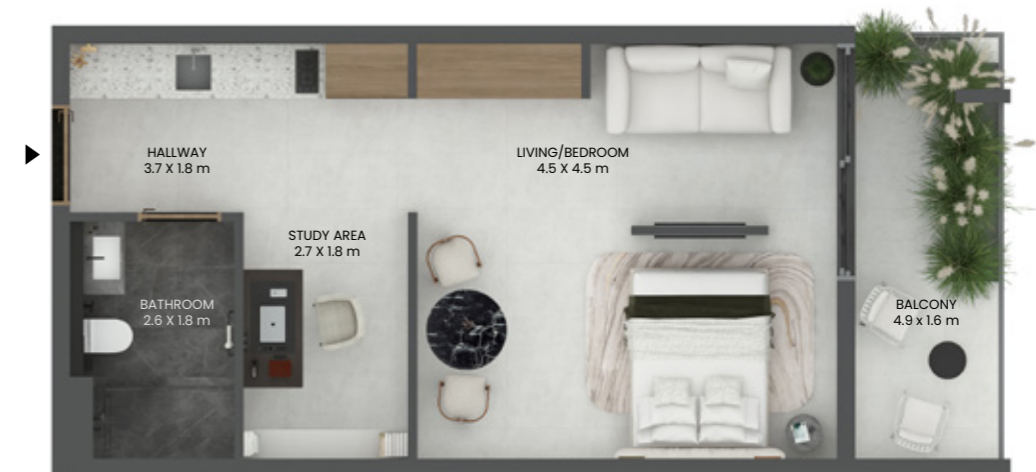
VILLA COMMUNITY 10

FLOOR PLATE



UNIT 24
STUDIO

TYPE - C



TOTAL AREA

535.50 SQ.FT. 49.75 SQ.M.

TOTAL INTERNAL AREA

441.97 SQ.FT. 41.06 SQ.M.

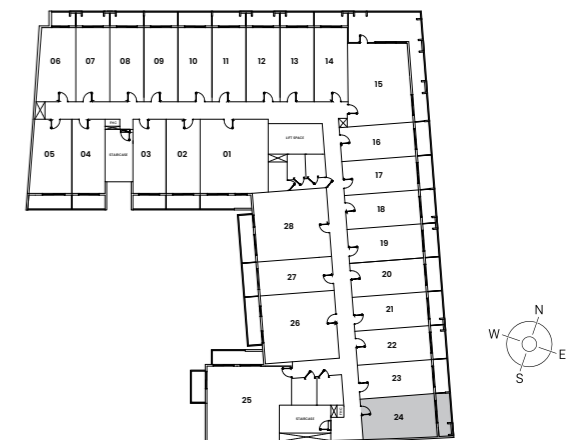
TOTAL EXTERNAL AREA

93.54 SQ.FT. 8.69 SQ.M.

VIEW UNIT SERIES

VILLA COMMUNITY /
SMBZ ROAD 24

FLOOR PLATE



*Indicative floor plate shows the actual unit in dark grey and typical units of the same type in light grey.

**All drawings and dimensions are approximate. Drawings not to scale and are subject to change without notice. The developer reserves the right to make revisions. The units are measured at typical floor in the building and columns may vary in size depending on the floor level. The Furnishings and accessories shown are for representation only. The length and width of the Unit and balcony varies depending on which floor and which orientation the unit is located within the building to comply with the building authority regulations.

*Indicative floor plate shows the actual unit in dark grey and typical units of the same type in light grey.

**All drawings and dimensions are approximate. Drawings not to scale and are subject to change without notice. The developer reserves the right to make revisions. The units are measured at typical floor in the building and columns may vary in size depending on the floor level. The Furnishings and accessories shown are for representation only. The length and width of the Unit and balcony varies depending on which floor and which orientation the unit is located within the building to comply with the building authority regulations.

UNIT 05
STUDIO
 TYPE - D



TOTAL AREA

470.60 SQ.FT. 43.72 SQ.M.

TOTAL INTERNAL AREA

377.38 SQ.FT. 35.06 SQ.M.

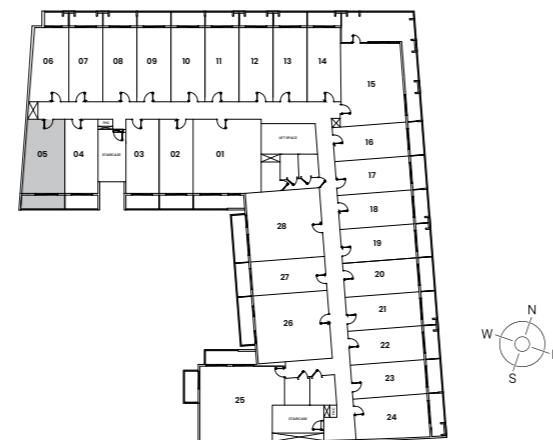
TOTAL EXTERNAL AREA

93.22 SQ.FT. 8.66 SQ.M.

VIEW UNIT SERIES

POOL 05

FLOOR PLATE



UNIT 15
ONE BEDROOM
 TYPE - A



TOTAL AREA

1208.89 SQ.FT. 112.31 SQ.M.

TOTAL INTERNAL AREA

783.72 SQ.FT. 72.81 SQ.M.

TOTAL EXTERNAL AREA

425.17 SQ.FT. 39.50 SQ.M.

VIEW UNIT SERIES

VILLA COMMUNITY /
 SMBZ ROAD 15

FLOOR PLATE



*Indicative floor plate shows the actual unit in dark grey and typical units of the same type in light grey.

**All drawings and dimensions are approximate. Drawings not to scale and are subject to change without notice. The developer reserves the right to make revisions. The units are measured at typical floor in the building and columns may vary in size depending on the floor level. The Furnishings and accessories shown are for representation only. The length and width of the Unit and balcony varies depending on which floor and which orientation the unit is located within the building to comply with the building authority regulations.

*Indicative floor plate shows the actual unit in dark grey and typical units of the same type in light grey.

**All drawings and dimensions are approximate. Drawings not to scale and are subject to change without notice. The developer reserves the right to make revisions. The units are measured at typical floor in the building and columns may vary in size depending on the floor level. The Furnishings and accessories shown are for representation only. The length and width of the Unit and balcony varies depending on which floor and which orientation the unit is located within the building to comply with the building authority regulations.

UNIT 01

ONE BEDROOM

TYPE - B



TOTAL AREA

826.67 SQ.FT. 76.80 SQ.M.

TOTAL INTERNAL AREA

718.49 SQ.FT. 66.75 SQ.M.

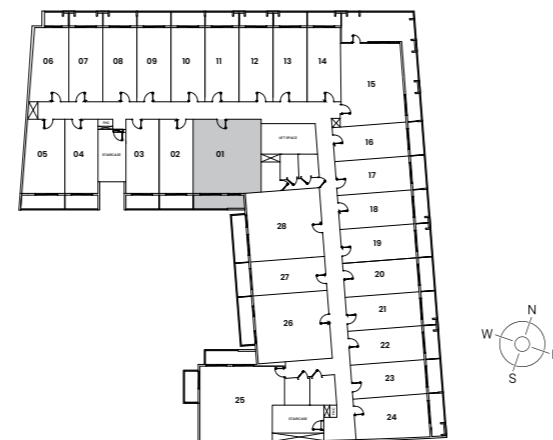
TOTAL EXTERNAL AREA

108.18 SQ.FT. 10.05 SQ.M.

VIEW UNIT SERIES

POOL 01

FLOOR PLATE



*Indicative floor plate shows the actual unit in dark grey and typical units of the same type in light grey.
 **All drawings and dimensions are approximate. Drawings not to scale and are subject to change without notice. The developer reserves the right to make revisions. The units are measured at typical floor in the building and columns may vary in size depending on the floor level. The Furnishings and accessories shown are for representation only. The length and width of the Unit and balcony varies depending on which floor and which orientation the unit is located within the building to comply with the building authority regulations.

UNIT 28

ONE BEDROOM

TYPE - C



TOTAL AREA

819.56 SQ.FT. 76.14 SQ.M.

TOTAL INTERNAL AREA

718.49 SQ.FT. 66.75 SQ.M.

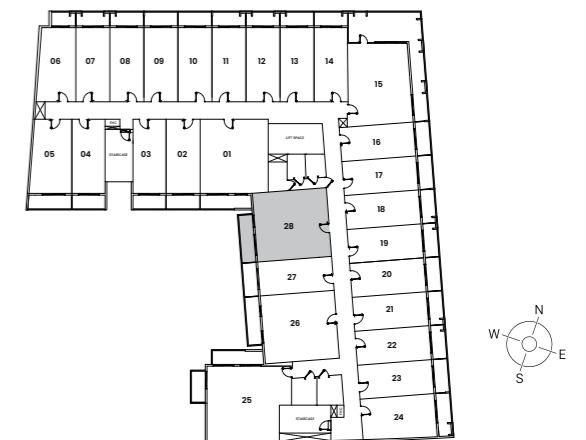
TOTAL EXTERNAL AREA

101.07 SQ.FT. 9.39 SQ.M.

VIEW UNIT SERIES

POOL 28

FLOOR PLATE



*Indicative floor plate shows the actual unit in dark grey and typical units of the same type in light grey.
 **All drawings and dimensions are approximate. Drawings not to scale and are subject to change without notice. The developer reserves the right to make revisions. The units are measured at typical floor in the building and columns may vary in size depending on the floor level. The Furnishings and accessories shown are for representation only. The length and width of the Unit and balcony varies depending on which floor and which orientation the unit is located within the building to comply with the building authority regulations.

UNIT 26

ONE BEDROOM

TYPE - D



TOTAL AREA

819.56 SQ.FT. 76.14 SQ.M.

TOTAL INTERNAL AREA

717.31 SQ.FT. 66.64 SQ.M.

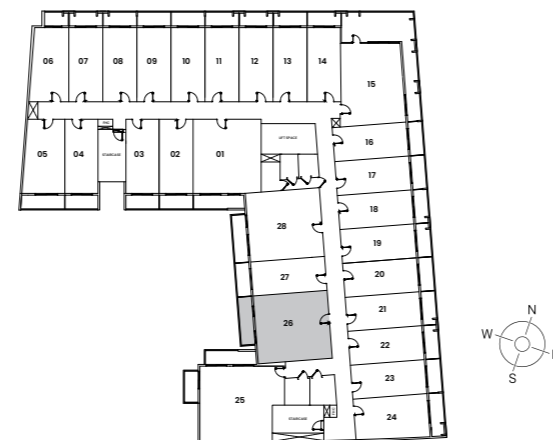
TOTAL EXTERNAL AREA

102.26 SQ.FT. 9.50 SQ.M.

VIEW UNIT SERIES

POOL 26

FLOOR PLATE



UNIT 25

ONE BEDROOM

TYPE - E



TOTAL AREA

1050.96 SQ.FT. 97.59 SQ.M.

TOTAL INTERNAL AREA

875.54 SQ.FT. 81.34 SQ.M.

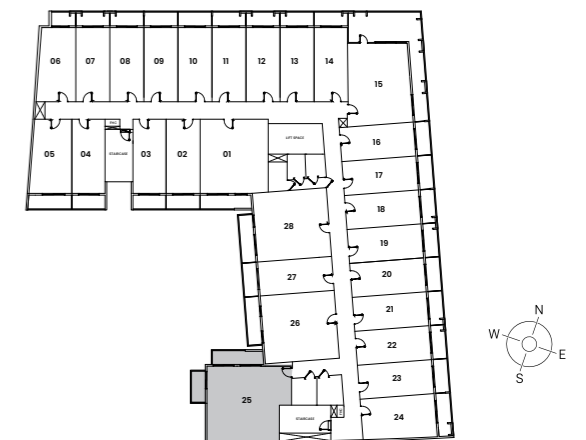
TOTAL EXTERNAL AREA

174.91 SQ.FT. 16.25 SQ.M.

VIEW UNIT SERIES

POOL 25

FLOOR PLATE



*Indicative floor plate shows the actual unit in dark grey and typical units of the same type in light grey.

**All drawings and dimensions are approximate. Drawings not to scale and are subject to change without notice. The developer reserves the right to make revisions. The units are measured at typical floor in the building and columns may vary in size depending on the floor level. The Furnishings and accessories shown are for representation only. The length and width of the Unit and balcony varies depending on which floor and which orientation the unit is located within the building to comply with the building authority regulations.

*Indicative floor plate shows the actual unit in dark grey and typical units of the same type in light grey.

**All drawings and dimensions are approximate. Drawings not to scale and are subject to change without notice. The developer reserves the right to make revisions. The units are measured at typical floor in the building and columns may vary in size depending on the floor level. The Furnishings and accessories shown are for representation only. The length and width of the Unit and balcony varies depending on which floor and which orientation the unit is located within the building to comply with the building authority regulations.



LEOS INTERNATIONAL

ليوس إنترناشيونال

Established in 2012, LEOS is a renowned luxury property developer with a strong presence in the UK, the UAE and internationally. LEOS is committed to defining the art of living through high-level and innovative design, architecture and development. Experts in residential, commercial and mixed-use real estate, LEOS' professional scope spans land sourcing and analysis, funding, development management, construction, sales and asset management.

Our well-versed and adept team are passionate about quality and on-time delivery and are on hand to deliver best in class projects both locally and internationally. LEOS prides itself on being highly collaborative in building transparent and trustworthy relationships with individuals and businesses to deliver its shared vision and unlock social, economic and commercial value for our stakeholders and clients.

Компания LEOS, основанная в 2012 году, является известным застройщиком элитной недвижимости в Великобритании и за рубежом. LEOS стремится определять искусство жизни с помощью инновационного дизайна, архитектуры и высококлассных объектов. Мы специализируемся на жилой, коммерческой и смешанной недвижимости. Наша сфера деятельности включает в себя поиск и анализ земельных участков, финансирование, управление проектами, строительство, продажи и управление активами.

Профессиональная и опытная команда специалистов заботится о качестве и своевременной реализации проектов - мы воплощаем в жизнь лучшие в своём классе проекты как на местном, так и на международном уровне. LEOS гордится тем, что активно сотрудничает в построении честных и доверительных отношений с отдельными лицами и предприятиями для реализации общего видения и раскрытия социальной, экономической и коммерческой ценности для заинтересованных сторон и клиентов.



Отказ от ответственности

*Все чертежи и размеры являются приблизительными. Чертежи представлены не в соответствующем масштабе и могут быть изменены без предварительного уведомления. Застройщик оставляет за собой право на внесение изменений. Площадь апартаментов измерена на стандартном этаже здания, а размер колонн может различаться в зависимости от уровня пола. Показанная мебель и аксессуары предназначены только для представления возможного внешнего вида. Длина и ширина апартаментов и балкона различаются в зависимости от этажа и расположения апартаментов в здании в соответствии со строительными нормами.

Disclaimer:

All images in this brochure are for illustration purposes only and are not contractual. The developer reserves the right to make modifications and adjustments at any time, without prior notice and at its sole discretion. If the developer substitutes any materials, they will be of similar or equal quality as the original materials. The developer is not liable for any damages resulting from the substitution, as long as the overall quality and functionality of the deliverables or services are not materially affected.



LEOS

UAE FREEPHONE 800 535

TEL: +97148759555

WWW.LEOSDEVELOPMENTS.COM