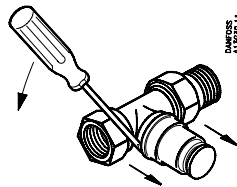
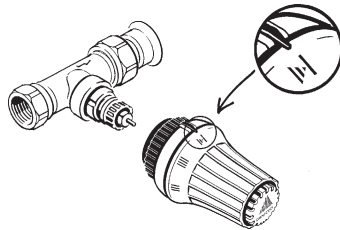


Danfoss Radiator Thermostat RAE Installation Guide

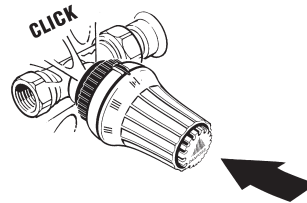
Fitting the snap-lock sensor



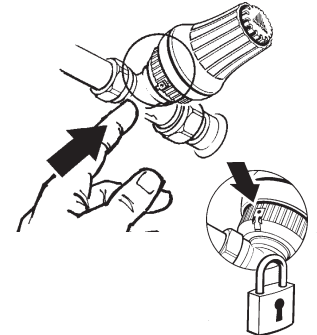
1. Prise the green protective cap off the valve.



2. Offer sensor onto valve ensuring that scale pointer is at top.

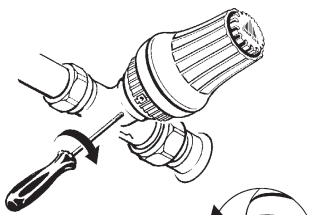


3. Press the sensor firmly onto valve until snap-lock "clicks"

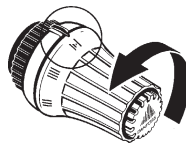


4. If required firmly press anti-theft lock into inner ring to prevent unauthorised removal

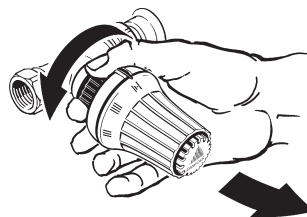
Removing the snap-lock sensor



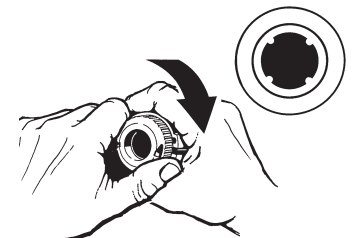
1. prise out antitheft lock with Danfoss tool or a small screwdriver.



2. Turn sensor to max. setting.



3. Hold outer ring whilst turning inner ring anti-clockwise to release snap-lock mechanism. The sensor can now be separated from the valve.



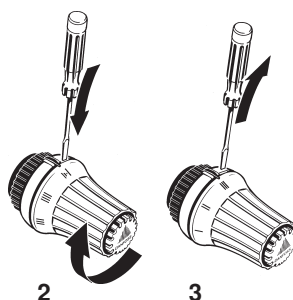
Resetting the snap-lock
4. Having removed sensor from valve, ensure sensor is set to max.
5. Hold outer ring whilst turning arrow mark on inner ring towards scale pointer until stop.

Adjusting temperature control range



Setting the upper limit:
e.g. III as the highest possible temperature selection:

1. Turn the head to max. position
2. Keep the limiter tab to the right of the black scale pointer pressed down with a small screwdriver.
3. Turn the head round to III and release the tab.



Setting the lower limit:
e.g. II as the lowest possible temperature selection:

1. Turn the head to min. position.
2. Keep the limiter tab to the left of the black scale pointer pressed down with a small screwdriver.
3. Turn the head to II. You can now release the tab.

