



**TRANSPORT**  
Very easy to carry.  
Folding legs under the frame



**EXTENSION SIZE TABLE**  
Very practical when cutting big tile sizes.  
(Optional: Art 85015)



**PACKAGING**  
Multilingual flexographed packaging

	Art. 845	Art. 850	Art. 855
DIAMOND DISK	ø200 mm. c/c standard	ø200 mm. c/c standard	ø200 mm. c/c standard
ENGINE	230V   50Hz   1,3Hp/1,0kW	230V   50Hz   1,3Hp/1,0kW	230V   50Hz   1,3Hp/1,0kW
ROTATION SPEED	2800 rpm.	2800 rpm.	2800 rpm.
MAX CUTTING LENGTH	500 mm.	650 mm.	950 mm.
MAX CUTTING DEPTH AT 90°	40 mm.	40 mm.	40 mm.
MAX CUTTING DEPTH AT 45°	40 mm.	40 mm.	40 mm.
MAX SIZE TILE FOR DIAGONAL CUT	354 x 354 mm.	460 x 460 mm.	672 x 672 mm.
WORKING SIZE TABLE	445 x 403 mm.	600 x 403 mm.	915 x 403 mm.
WATER RECYCLING PUMP TYPE	S0 standard	S0 standard	S0 standard
DIMENSION MACHINE IN SERVICE	1010x440x h. 1250 mm.	1160x440x h. 1250 mm.	1460x440x h. 1250 mm.
DIMENSION MACHINE IN STOCK	960x570x h. 500 mm.	960x570x h. 500 mm.	1270x570x h. 500 mm.
DIMENSION 8 MACHINES ON PALLET	1000x1140x h. 2100 mm.	1000x1140x h. 2100 mm.	1140x1270x h. 2100 mm.
NET WEIGHT	31 Kg.	34 Kg.	39 Kg.

**BATTIPAV™**  
MACCHINE PER EDILIZIA | MACHINES FOR BUILDING

Z. i. 2 - Via Cavatorta, 6/1 | 48010 Cotignola (Ra) | ITALY  
Tel. +39 0545 40004 | Fax +39 0545 41724  
www.battipav.com | sales@battipav.com

AUTHORIZED DEALER:



January 2011



# RADIAL TILE SAWS

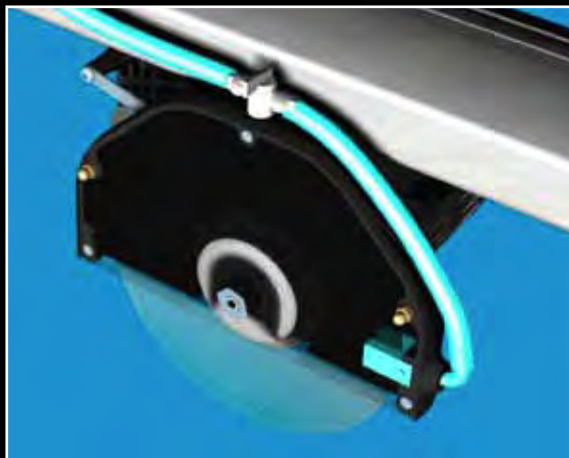


*Designed  
and made  
in Italy*

## APPLICATION

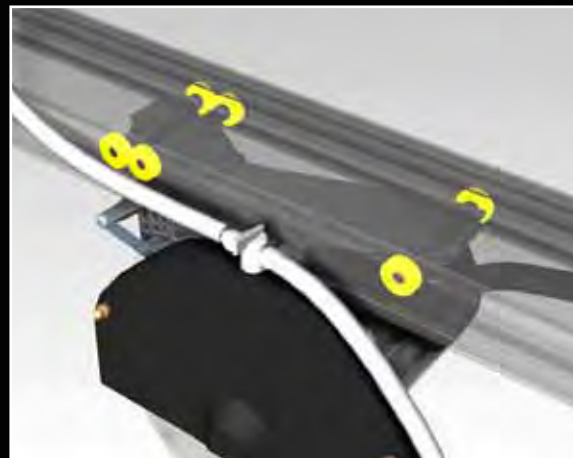
Built to cut ceramic tiles, porcelain  
stoneware and marble





# **Spray system**

Patented system that improves the lubrication of diamond disk and ensures higher cutting performance and longer-lasting blades.



# **CARRIAGE ENGINE GROUP**

The carriage engine group slides with 6 ball-bearings (of which 2 are adjustable) on the track. So doing the sliding is very fast and precise.



# **CUTTING HEAD**

Tilting cutting head for one greater rapidity and precision in the execution of particular cuts. It can be locked at the wished height.



# **CUTS IN SERIES**

Execution of the cuts in series due to the blocking handle with the immediate reading of the length on the rail.



# **45° CUT**

Position 45° angle cuts.



Our submerged pump is marked with the registered trademark **AxT**, the acronym of "Acqua per Tagli" which stands for **Water for Cutting**; its certifies its provenance and authenticity.

