

USB / RS-485 INTERFACE CONVERTER

USB-RS485

INSTRUCTION MANUAL

1 GENERAL

1.1 Description

The USB-RS485, USB-to-RS485 Interface Converter is designed to convert USB interface signals to signals of two-wire trunk interface RS-485 with galvanic isolation. The USB-RS485 is powered via a USB port of a personal computer (PC). The USB-RS485 can operate under such operating systems as Windows 2000, XP, Server 2003, Vista, Server 2008, Windows 7, Server 2008 R2, Windows 8 (x86 and x64) forming a virtual COM port. The USB-RS485 is designed for round-the-clock operation.

1.2 Specifications

- 1) Power Voltage: USB port of a PC.
- 2) Consumed Current: 200 mA max.
- 3) Baud rates: 110, 300, 1200, 2400, 4800, 9600, 19200, 38400, 57600, 115200, 230400.
- 4) Operation Temperatures: -30°C to $+50^{\circ}\text{C}$.
- 5) Relative Humidity: up to 93 % at $+40^{\circ}\text{C}$.
- 6) Overall Dimensions: 19 mm \times 58 mm \times 11 mm max.
- 7) Weight: 11 g max.

1.3 Standard Delivery

For each USB-RS485, standard delivery includes:

- USB-RS485: 1 pc.;
- Instruction Manual: 1 pc.;
- Installation Driver: 1 archived file;
- Package: 1 pc.

1.4 Interface Converter Operation Principle

USB-RS485 operation is based on converting USB interface signals to the RS-485 interface signals and back. After connecting the USB-RS485 to a PC and installing the software the interface converter is 'seen' as an additional COM port providing data transmission in the half-duplex mode. Parameters of transmitting data over the RS-485 interface (data transmission rate, parity, quantity of stop bits) are adjusted by the same way as for any other COM port of the PC.

2 OPERATING INSTRUCTIONS

2.1 External Connections

Figure 1 shows the typical schematic for connecting the USB-RS485.

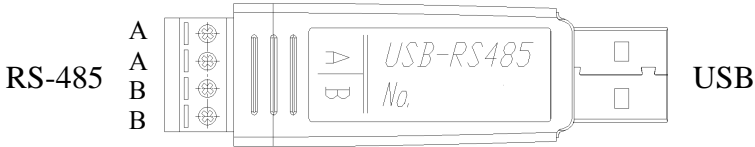


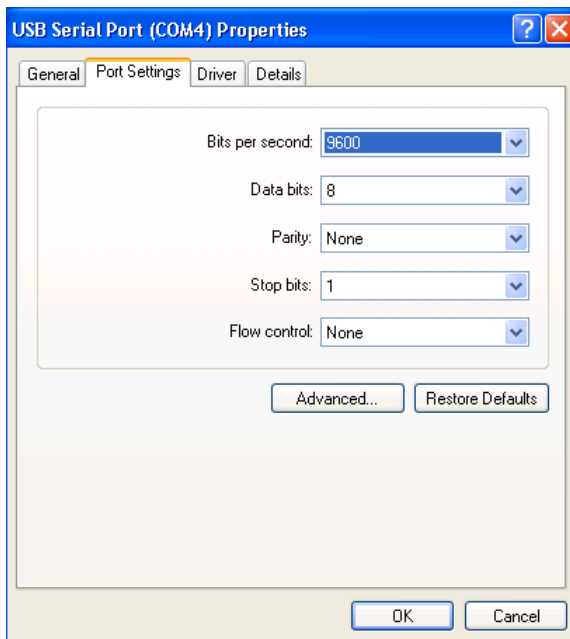
Figure 1: Schematic for connecting the USB-RS485

2.2 Operating the USB-RS485

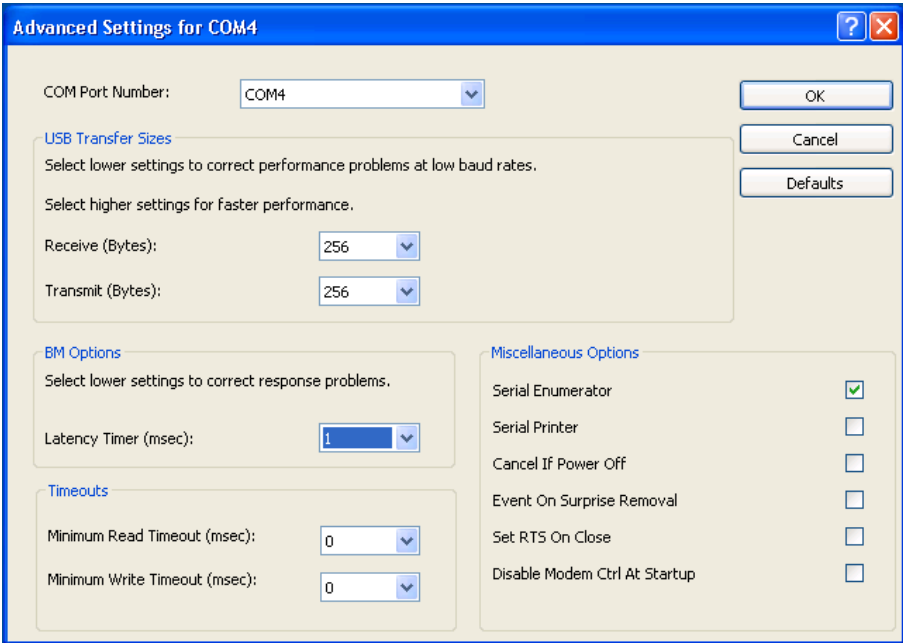
2.2.1 A terminal resistor $120\ \Omega$ is brought to the interface line, so the USB-RS485 must be the first or the last device in the RS-485 interface bus.

2.2.2 The USB-RS485 to operate on your PC, you should install the USB-RS485 driver on the PC before connecting the USB-RS485. To do so, run the provided file *CDM v2.08.30 WHQL Certified.exe* and follow instructions.

2.2.3 As soon as the USB-RS485 Driver is installed on the PC, the group Ports (COM&LPT) of the Device Manager shall include the *USB Serial Port (COMx)* entry where 'x' is the number of the virtual COM port. Right click the entry and select *Properties*; then select *Port Settings*:



Click Advanced:



In the Advanced Settings window you can change the number of the COM-port, if you need. Set *Receive* and *Transmit* to 256 and *Latency Timer* to 1 msec. Click OK to save changed settings. The USB-RS485 is ready to operate.

2.2.4 Indicator Operation. Indicator's lighting means receiving/transmitting signals via RS-485 interface bus.



ZAO NVP Bolid, 4 Pionerskaya Str., Korolev 141070, Moscow Region, Russia

Phone/fax: +7 495 775-7155

Email: info@bolid.ru, overseas@bolid.com

www.bolid.com

BOLID ONE YEAR LIMITED WARRANTY

Bolid Company and its divisions and subsidiaries («Seller»), 4 Pionerskaya Str., Korolev 141070, Moscow Region, Russia warrants its security equipment (the «product») to be free from defects in materials and workmanship for one year from date of original purchase, under normal use and service. Seller's obligation is limited to repairing or replacing, at its option, free of charge for parts or labor, any product proven to be defective in materials or workmanship under normal use and service. Seller is not responsible for results where the product is used improperly, where it is used for any application it is not intended for, used under unacceptable environmental conditions and mishandled or stored under improperly. Seller shall have no obligation under this warranty or otherwise if the product is altered or improperly repaired or serviced by anyone other than the Seller. In case of defect, contact the security professional who installed and maintains your security equipment or the Seller for product repair.

This one year Limited Warranty is in lieu of all other express warranties, obligations or liabilities. There are no express warranties, which extend beyond the face hereof. Any implied warranties, obligations or liabilities made by seller in connection with this product, including any implied warranty of merchantability, or fitness for a particular purpose or otherwise, are limited in duration to a period of one year from the date of original purchase. Any action for breach of any warranty, including but not limited to any implied warranty of merchantability, must be brought within 12 months from date of original purchase. In no case shall seller be liable to anyone for any consequential or incidental damages for breach of this or any other warranty, express or implied, or upon any other basis of liability whatsoever, even if the loss or damage is caused by the seller's own negligence or fault. Some countries do not allow limitation on how long an implied warranty lasts or the exclusion or limitation of incidental or consequential damages, so the above limitation or exclusion may not apply to you.

Seller does not represent that the product may not be compromised or circumvented; that the product will prevent any personal injury or property loss by burglary, robbery, fire or otherwise; or that the product will in all cases provide adequate warning or protection. Buyer understands that a properly installed and maintained alarm may only reduce the risk of a burglary, robbery, fire or other events occurring without providing an alarm, but it is not insurance or guarantee that such will not occur or that there will be no personal injury or property loss as a result. CONSEQUENTLY, SELLER SHALL HAVE NO LIABILITY FOR ANY PERSONAL INJURY, PROPERTY DAMAGE OR OTHER LOSS BASED ON A CLAIM THE PRODUCT FAILED TO GIVE WARNING. HOWEVER, IF SELLER IS HELD LIABLE, WHETHER DIRECTLY OR INDIRECTLY, FOR ANY LOSS OR DAMAGE ARISING UNDER THIS LIMITED WARRANTY OR OTHERWISE, REGARDLESS OF CAUSE OR ORIGIN, SELLER'S MAXIMUM LIABILITY SHALL NOT IN ANY CASE EXCEED THE PURCHASE PRICE OF THE PRODUCT, WHICH SHALL BE THE COMPLETE AND EXCLUSIVE REMEDY AGAINST SELLER. This warranty gives you specific legal rights, and you may also have other rights which vary from country to country. No increase or alteration, written or verbal, to this warranty is authorized.