

Pikkutonttu 4, 6, 9 and Digi II

HELO


Heater guard rail is an accessory.

Pikkutonttu and Digi II

Sauna heater with separate digital control unit.

Application

Heaters are designed for saunas sized 3-14 m³ (see table).

Pikkutonttu sauna heaters are available in black, pearlescent green and red. Tops are black on all models.

Dimensions

Width ^{*)}	460 mm
Height	990 mm
Weight	33 kg
Stones	approx. 90 kg

^{*)} see mounting figure


HELO
sauna & steam

Structure

The heater outer casing is made of painted corrosion-resistant steel plate. The frame is made of corrosion-resistant and heat-reflective steel. The top is made of pressure-moulded aluminium.

Mounting

The heater is mounted standing on the floor and is fastened to the wall or floor with the (included) mounting screws.

Electrical installation

The heater is connected to a three-phase electrical connection (see 'Electrical connections' on pg. 2).

Control system

The heater is controlled by a control unit equipped with a digital microprocessor. The wall-mounted thermostat sensor monitors the temperature of the sauna room. The heater includes the control unit with a 5-metre cable and thermostat sensor with a 5-metre cable.



Digi II

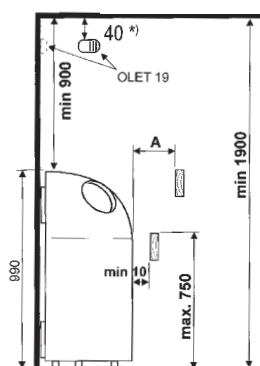
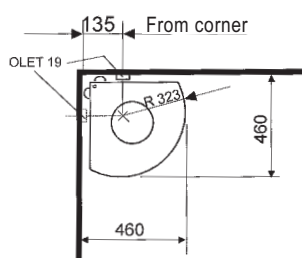
Pikkutonttu sauna heaters

Model	Type	Power kW	Sauna m ³ ^{*)}	Min. sauna height mm
Pikkutonttu 4	1116-45-0405	4,5	3 - 6	1900
Pikkutonttu 6	1116-60-0405	6,5	5 - 10	1900
Pikkutonttu 9	1116-90-0405	9,0	9 - 14	1900

^{*)} Volymes calculated for fully insulated sauna rooms.

Safety distances and wall mounting

Mounting in corner



Heater kW	Min. wall mounting distances A mm
4,5	40
6,5	150
9,0	150

^{*)} This distance may not be deviated.

Pikkutonttu 4, 6 and 9



Control Unit Digi II



The sauna room temperature is controlled by the control unit. It displays the time, heating time duration or temperature.

The control unit has a 24-hour timer and 4 presettable memory locations. The control unit is also equipped with setting buttons for any connections to lighting or fans.

SMARTSAUNA function: Sauna temperature, and time when the sauna is ready for bathing are set with the control unit. The control unit monitors the temperature value with the thermostat sensor and the sauna is ready for use at the set time.

Accessories

Heater guard rail - colour: stainless steel

For more detailed mounting information, consult the mounting and operating instructions included with the sauna heater.

Electrical connections

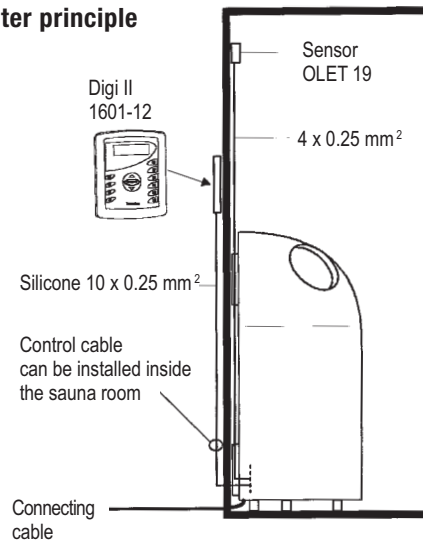
The heater is connected using a semi-fixed H0 7 RN-F (or similar) rubber-sheathed cable.

Pikkutonttu Di

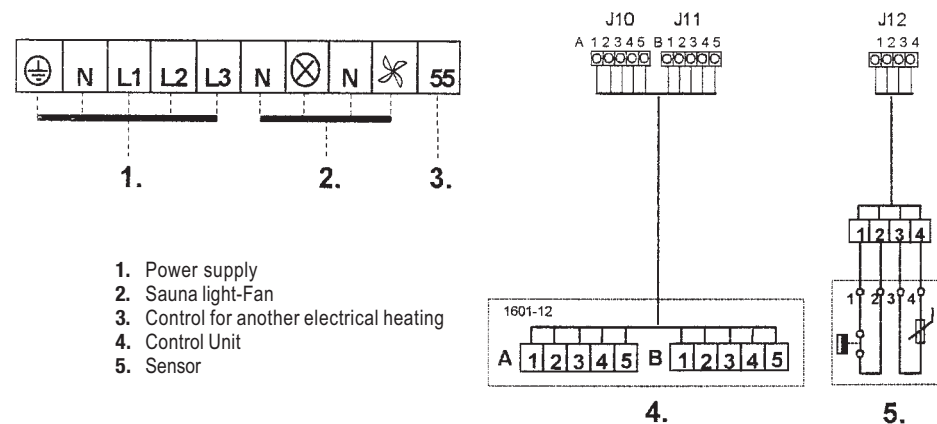
Power kW	Fuse A	¹⁾ Heater connection cable mm ²	Fixed connection mm ²
4,5	3 x 10	5 x 1,5	5 x 1,5
6,5	3 x 10	5 x 1,5	5 x 1,5
9,0	3 x 16	5 x 1,5	5 x 2,5

¹⁾ Rubber-sheathed cable between junction box and heater.

Schematic of heater principle



Wiring diagram



1. Power supply
2. Sauna light-Fan
3. Control for another electrical heating
4. Control Unit
5. Sensor



Saunatec Group Ltd
P.O. Box 15, FIN-10901 Hanko
Tel +358 19 280 7300
Fax +358 19 248 5043

info@saunatec.fi
www.saunatec.fi