



# E LED XC Series

Flip-chip COB HD LED display

Pixel Pitch: P1.25/1.579/1.875/2/2.5/3/1.5625



IP54 protection level



Integrated design



High grayscale level



No color difference



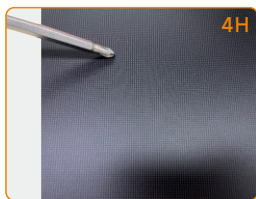
HDR high dynamic image quality



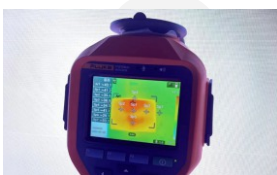
Precision splicing adjustable design

## Features

Surface protection level IP54, panel hardness 4H



Low-power cold screen, energy-saving common cathode/anode circuit, low temperature rise, low power consumption.

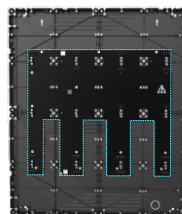


Under normal temperature, white balance temperature  $\leq 45^{\circ}\text{C}$



Single cabinet power consumption  $\leq 75\text{w}$ , power consumption per square meter  $\leq 370\text{w}$

Power supply, system and HUB three-in-one design.



HUB board

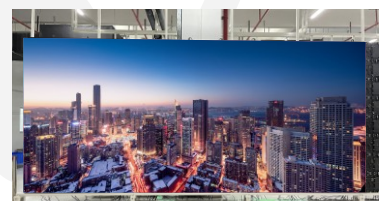


Receiving card



Power supply

Matte and anti-glare design effectively suppresses ambient light reflection and greatly improves visibility under strong light



## XC-COB encapsulation Parameters

Parameter Name	P0.625	P0.78	P0.93	P1.25	P1.56	P1.87
Pixel Pitch (mm)	0.625	0.78	0.93	1.25	1.56	1.87
Cabinet Size (W×H×D/mm)	600×337.5×39.5		600×337.5×39.5   600×675×39.5			
Cabinet resolution (W×H)	960×540	768×432	640×360 640×720	480×270 480×540	384×216 384×432	320×180 320×360
Module arrangement (W×H)	4×2		4×2   4×4			
Cabinet Weight (kg)	≈4		≈4   ≈7.9			
Maintenance Mode	Front Service					
Protection	IP54					
Cabinet material	Die-cast aluminum					
Module Resolution (W×H)	240×270	192×216	160×180	120×135	96×108	80×90
Pitch Density(Pixels/m <sup>2</sup> )	2560000	1638400	1137777	640000	409600	284444
Encapsulation process	COB encapsulation					
Module Size(W×H×D/mm)	150×168.75					
Refresh Rate(Hz)	1920~3840					
Brightness(cd/m <sup>2</sup> )	≥600					
Grey Scale(bit)	18~20					
Contrast (CR)	20000:1 (No ambient light conditions)					
Viewing Angle(°)	170°					
Best Sight Distance (m)	≥1					
Working Voltage(v)	AC: 100~240、50/60					
Peak Power Consumption(w/m <sup>2</sup> )	≤325					
Ave.Power Consumption(w/m <sup>2</sup> )	≈135					
Continuous Working Hours(hrs)	≥7×24hrs					
Life Span(h)	100,000					
Operating humidity and temperature range (°C)	-10°C~+40°C/10%RH-90%RH					
Storage humidity and temperature range (°C)	-20°C~+60°C/10%RH-90%RH					

+7 701 5776770

info@redsp.kz

Алматы

+7 701 5776770

www.redsp.kz

