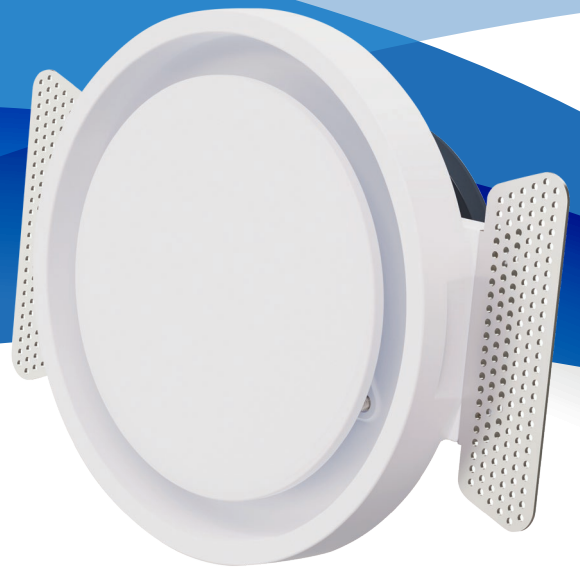


PLASTER DIFFUSER

NEW PRODUCT

- SUPPLY & EXTRACT

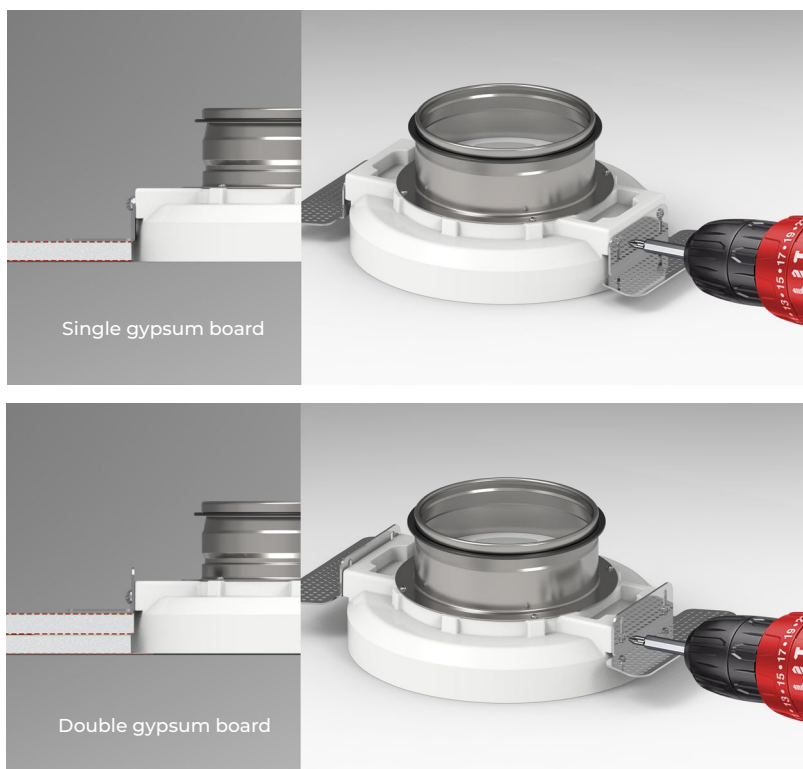


The plaster diffusers can be connected to all air ducts that have the standard connection diameters.

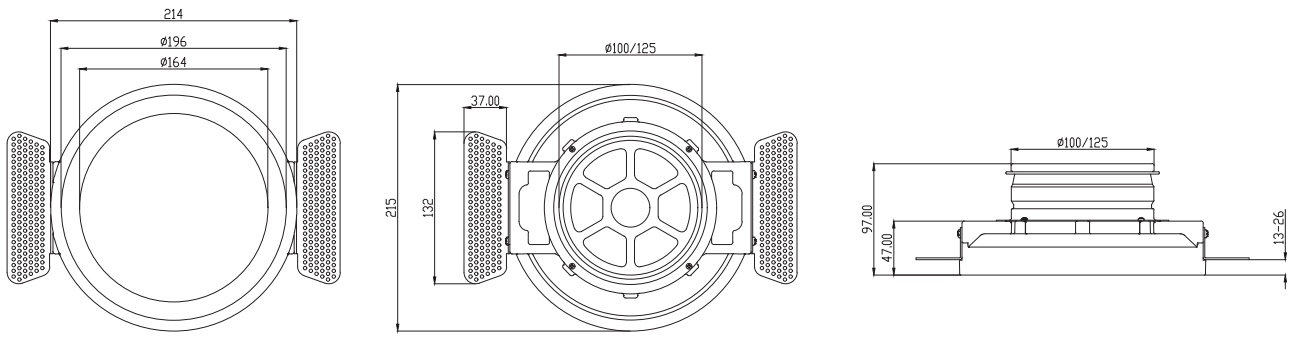
Frameless diffusers, on the other hand, require slightly more space for their installation under the plasterboard ceiling. This is because their design may necessitate a bit more clearance to ensure proper installation. The instruction manual contains the exact measurements that must be followed meticulously for a successful installation of the diffuser. These measurements are crucial in ensuring that the diffuser functions optimally and is installed securely.

PU valves inserted in the diffuser connection sleeve are utilized to balance the ventilation system. The airflow can be adjusted by changing the number of removable segments. This allows for fine-tuning of the ventilation system to meet the specific needs of the space being ventilated. By adjusting the number of removable segments, the airflow can be optimized to provide the desired level of ventilation, ensuring a comfortable and healthy indoor environment.

Key Features & Benefits



1. Aesthetically pleasing design: Blends seamlessly with plasterboard ceilings, enhancing the overall look of the space.
2. Durability: Made from quality plaster materials, able to withstand daily use and less likely to degrade over time.
3. Efficient air dispersion: Ensures optimal ventilation by evenly distributing air throughout the room.
4. Sound insulation: Helps reduce noise from the ventilation system for a quieter environment.
5. Space-saving: Frameless diffusers require only a little extra space for installation.
6. Customizable airflow: Allows for adjustment of airflow by changing the number of removable segments.



Installation instructions

