

Xylem Water Solutions AB (the Company) was previously named ITT Water & Wastewater AB. The name change took place in November 2011. This is document is (i) a document that relates to a product of the Company phased out prior to the name change; or (ii) an old version of documentation relating to a product that is still being produced by the Company but which document was published prior to the 1st of January 2012 . This document may therefore still be marked "ITT". Xylem Water Solutions AB is no longer an ITT company and the fact that "ITT" may appear on this document shall not be interpreted as a reference by the Company to "ITT" in the Company's current business activities. Any use or reference to "ITT" by you is strictly prohibited. In no event will we be liable for any incidental, indirect, consequential, punitive or special damages of any kind, or any other damages whatsoever, including, without limitation, those resulting from loss of profit, loss of contracts, loss of reputation, goodwill, data, information, income, anticipated savings or business relationships for any use by you of "ITT". This disclaimer notice shall be interpreted and governed by Swedish law, and any disputes in relation to it are subject to the jurisdiction of the courts in Sweden. If you do not agree to these terms and conditions you should not print this document and immediately stop accessing it.

End of Disclaimer text.



ITT

Water & Wastewater

Parts List

Flygt 3153.091/095/181/185



Engineered for life

Parts List

Flygt 3153.091/095/181/185

Overview

Table of Contents

This publication contains the following topics:

Topic

Preface	4
Practical information	5
Data plate interpretation	6
Product denomination	9
Order parts	11
Motor Parts	12
Explosion-proof	13
Standard	15
List	17
Hydraulic Parts	24
N_LT	25
N_MT	27
N_HT	28
N_SH	29
List	30
Sump Components	36
NP	37
NS	39
NT LT	41
NT MT/HT/SH	42
NZ	43
List	44
Parts for Service	47
List	48

Preface

Purpose

The purpose of this document is to give the reader information about parts and accessories for the product.

Recipient

The document is intended for ITT

- customers
 - service personnel
 - sales personnel
-

Contact

For more information

- contact your ITT representative
 - visit <http://www.ittwww.com/>
-

Reference

More information about the product is available at <http://webservices.ittwww.com/tpi/>.

Practical information

Overview

Table of Contents

This chapter contains the following topics:

Topic

Data plate interpretation	6
Data plate	6
Approval plate	7
Product denomination.....	9
Order parts	11

Data plate interpretation

Introduction

The ITT product is always provided with data plates:

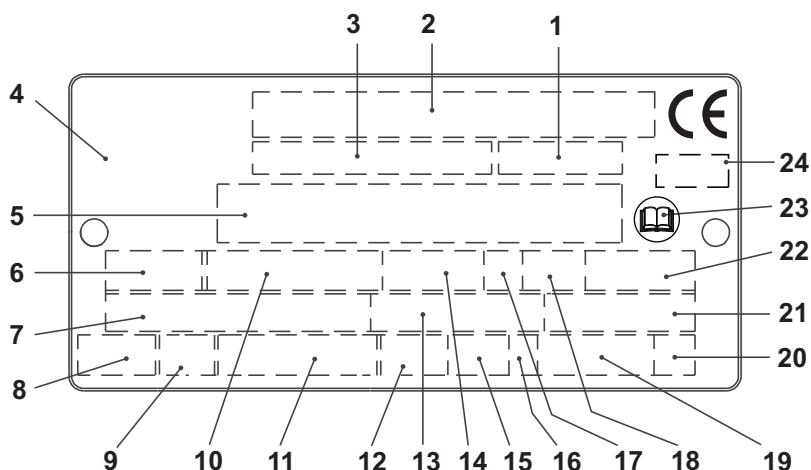
- The general data plate is used on all products.
- The approval plate is added to all explosion proof products.

Data plate

The product may only be operated within the parameters stated on the data plate.

Illustration

This is an illustration of a general data plate.



Field description

This table shows the fields on the general data plate, and which information each field contains.

Field	Description	Field	Description
1	Curve code/Propeller code	13	Rated current
2	Serial number	14	Rated speed
3	Product number	15	Maximum submergence
4	Country of origin	16	Direction of rotation: <ul style="list-style-type: none"> • L = Left • R = Right
5	Additional information	17	Duty class
6	Phase; type of current, frequency	18	Duty factor
7	Rated voltage	19	Product weight
8	Thermal protection	20	Locked rotor code letter
9	Thermal class	21	Power factor

Field	Description	Field	Description
10	Rated shaft power	22	Maximal ambient temperature
11	International standard	23	Read Installation Manual
12	Degree of protection	24	Notified body (only for EN-approved Ex-products)

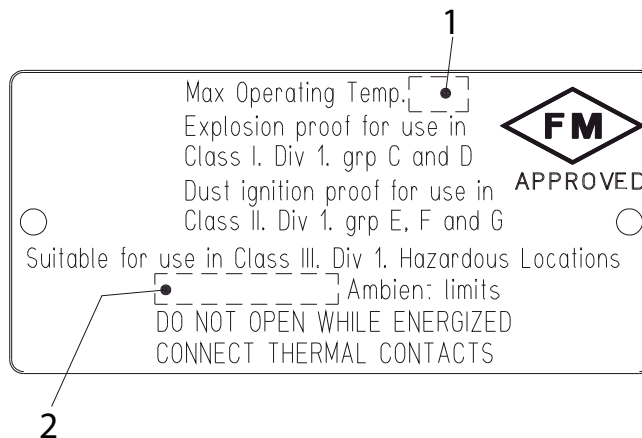
Approval plate

The approval is shown on the approval plate.

FM approved version

Illustration

This is an illustration of an approval plate for the FM approved product version.



Field description

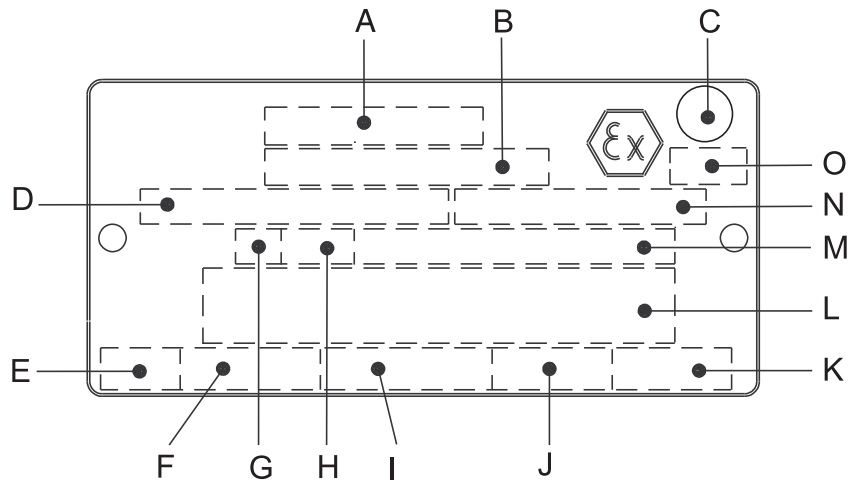
This table shows the fields on the approval plate, and which information each field contains.

Field	Description
1	Temperature class
2	Maximum ambient temperature

EN approved version

Illustration

This is an illustration of an approval plate for the EN approved product version.



Field description

This table shows the fields on the approval plate.

Field	Description	Field	Description
A	Approval	I	Input power
B	Approval authority + Approval Number	J	Rated speed
C	Approval for Class 1	K	Controller
D	Approved drive unit	L	Additional information
E	Stall time	M	Max. ambient temperature
F	Starting current / Rated current	N	Serial number
G	Duty class	O	ATEX marking
H	Duty factor	-	-

Product denomination

Sales denomination

The product's identity is built up of the Sales Code (four digit) and two letters indicating hydraulic end and type of installation.

This is an example of a sales denomination.

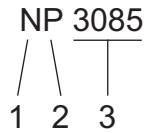


Table: This table explains what the letters and the numbers in the sales code stand for.

Code Position	Gives information about the...
1	hydraulic part
2	installation mode
3	sales code

Product code

In each range the product identity, Product Code, is made up of seven digits.

This is an example of a product code.

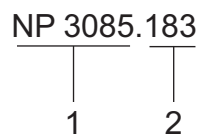


Table: This table explains what the product code is made up of:

Code position	Gives information about the ...
1	sales denomination
2	version

Serial number

The serial number is used for identification of an individual pump/mixer.

This is an example of a serial number.

NP 3085.183 - 951 0163

1 2 3 4

Table: This table explains what the serial number is made up of:

Product code position	Gives information about the ...
1	product code
2	production year
3	production cycle
4	running number

Order parts

Order

When ordering spare parts, state serial number of the product, spare part number and quantity.

Requirements

Genuine ITT parts must always be used for repairs if the product is to fulfill requirements and obtain official approval.

Qualification of personnel

Only ITT or ITT-authorized service personnel may undertake repair work on Ex-approved products.

Specially approved products

Spare parts marked with ^(EX) after the part number are subject to dimensional accuracy inspection.

Motor Parts

Overview

Table of Contents

This chapter contains the following topics:

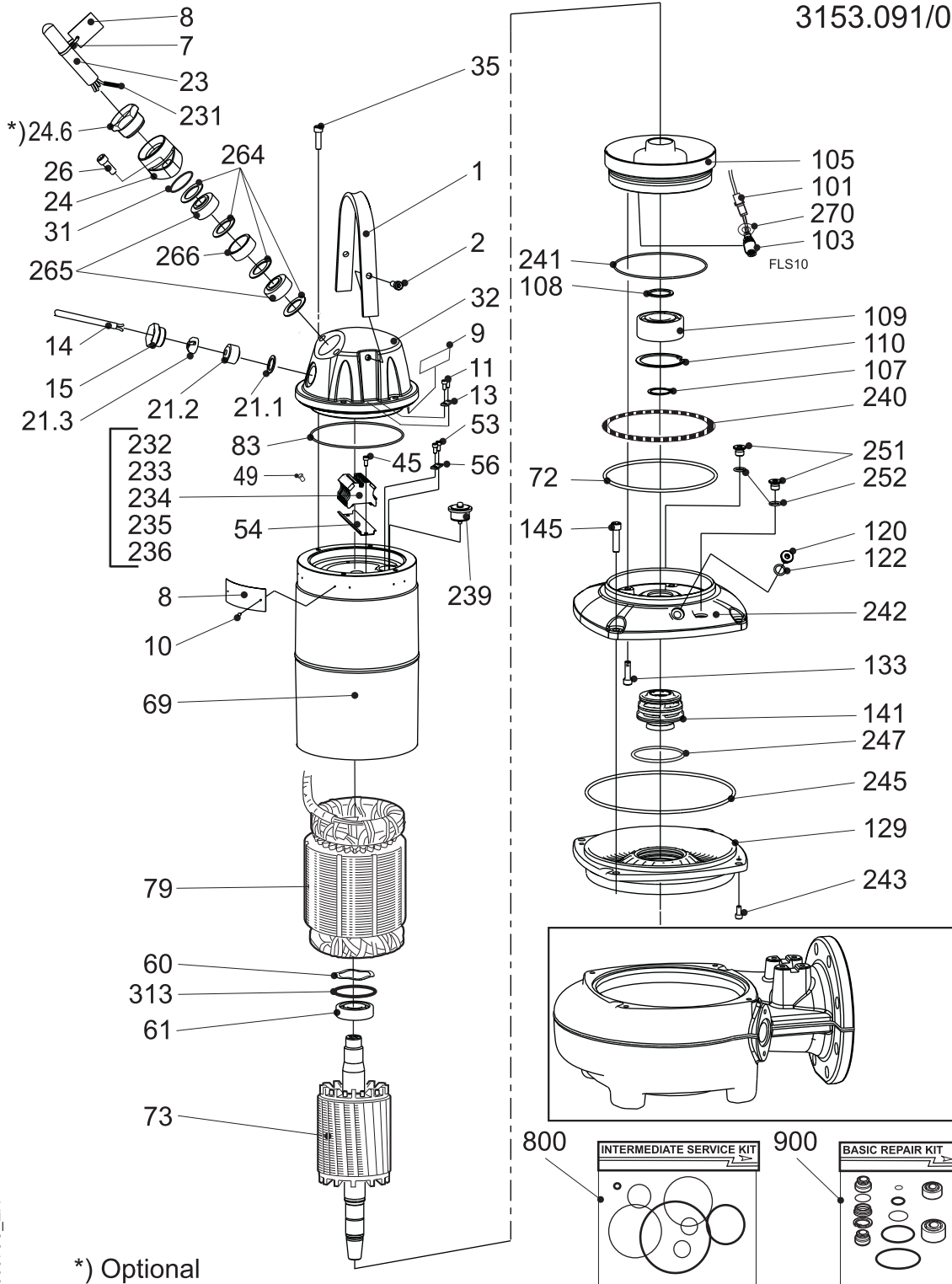
Topic

Explosion-proof	13
Without Cooling Jacket	13
With Cooling Jacket	14
Standard	15
Without Cooling Jacket	15
With Cooling Jacket	16
List	17

Explosion-proof

Without Cooling Jacket

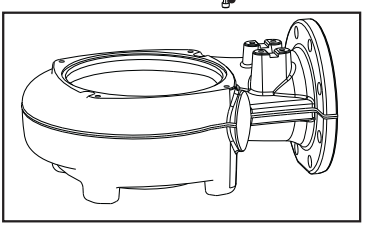
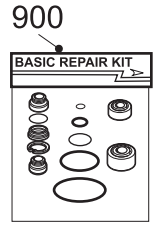
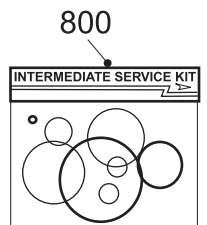
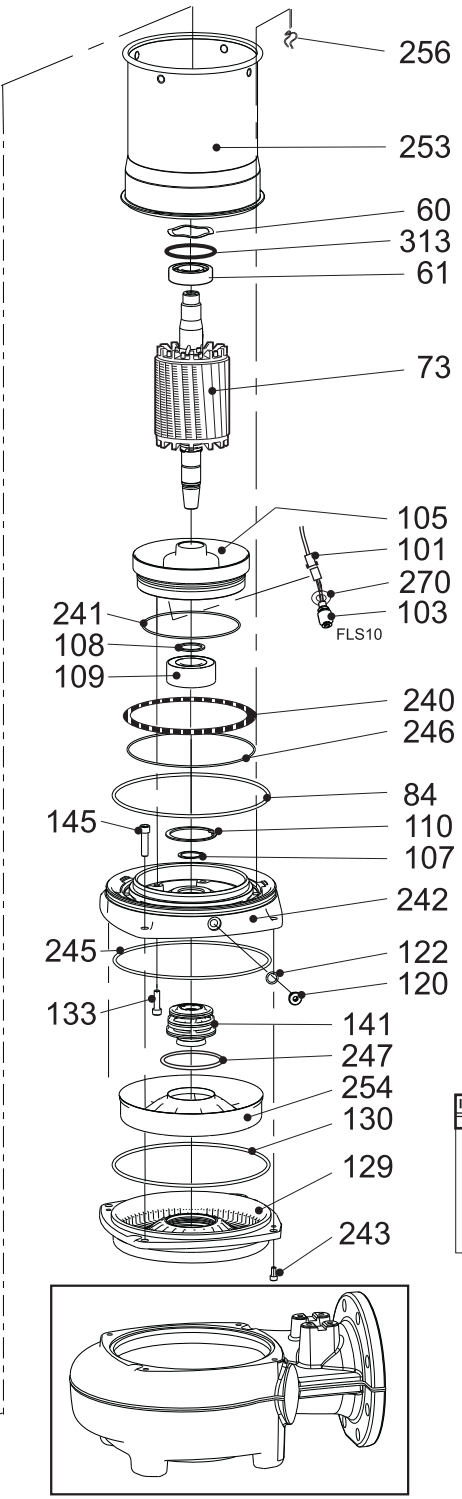
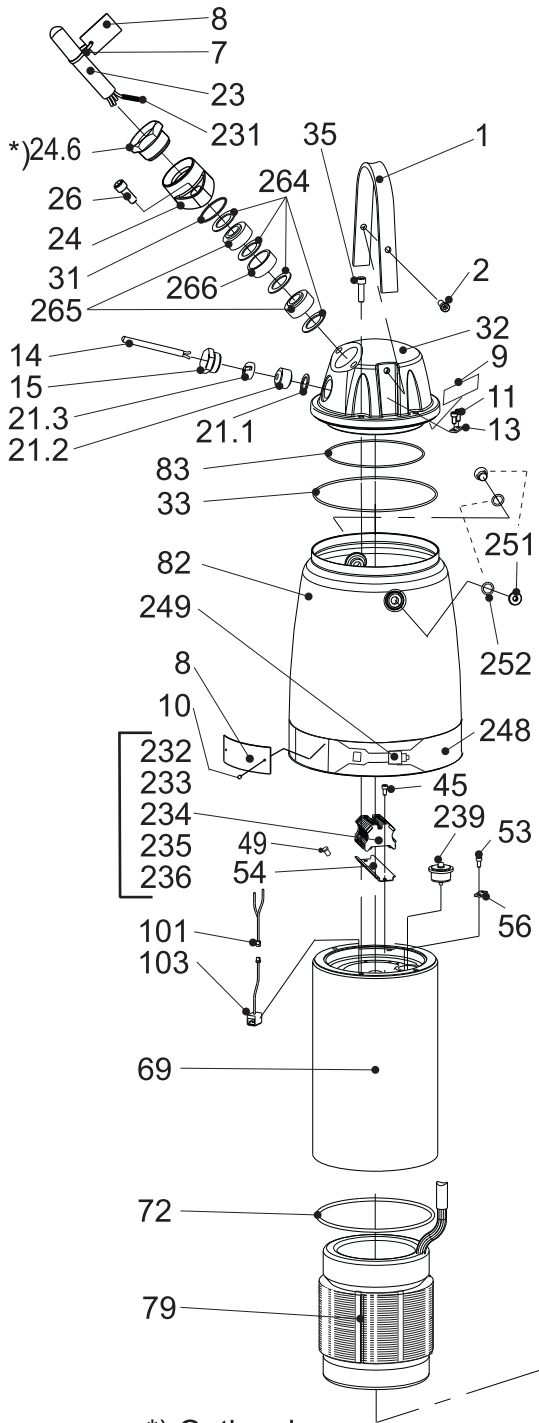
3153.091/095



30575C_EX

With Cooling Jacket

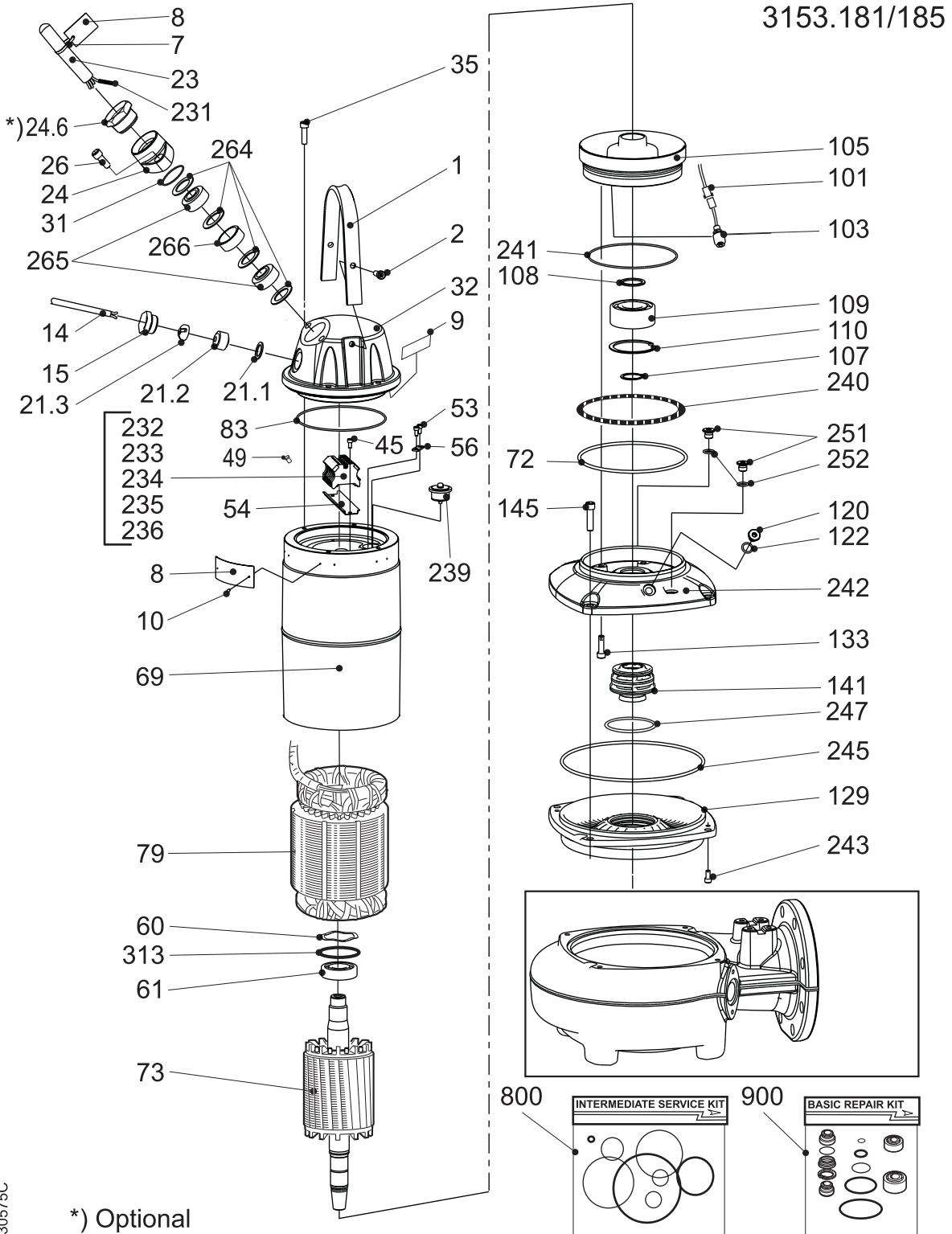
3153.091/095



30699D_EX *) Optional

Standard

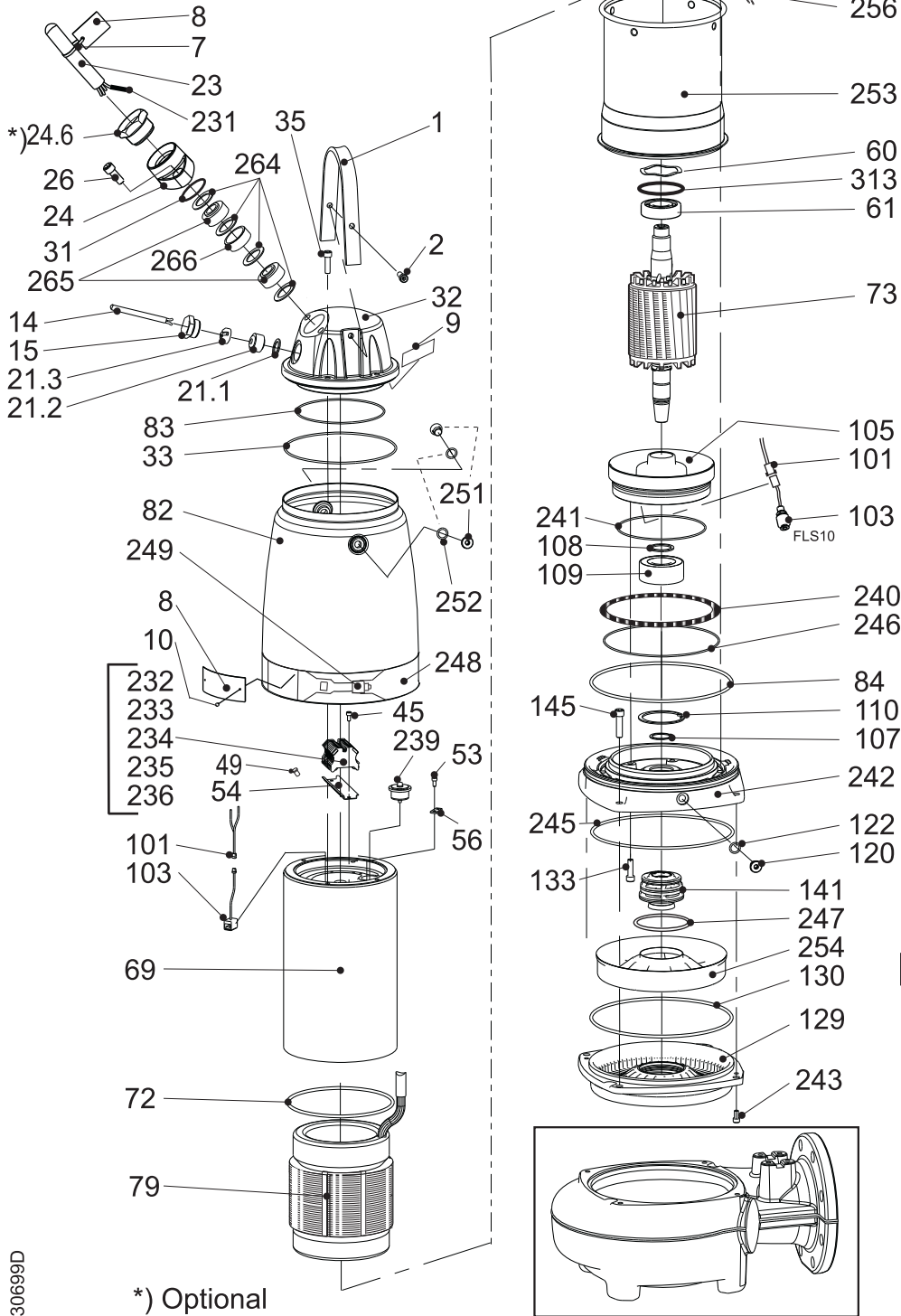
Without Cooling Jacket



30575C

With Cooling Jacket

3153.181/185



30699D

*) Optional

List

Pos. No	Part. No	Denomination	Qty/Version			
			091	095	181	185
1	642 15 00	Lifting handle	1	1	1	1
2	83 04 56	Hex.socket hd screw M10X35-A4-80	2	2	2	2
7	83 45 52	Cable tie 292X3.5;NYLON;+125 C	1	1	1	1
7	83 45 59	Cable tie 200X2.4 PA 6/6 -55+105	1	1	1	1
8	630 68 00	Data plate USE 6306801 AS SPARE PART	2	2	2	2
8	630 69 00	Certificate plate EX	2	2		
8	630 70 00	Certificate plate FM APPROVED	2	2		
8	630 76 00	Plate HOT WATER PRODUCT			1	1
9	83 93 50	Marking strip 5-GW(T1;T2;T15;T16)	1	1	1	1
9	83 93 51	Marking strip W5;V5;U5;V2;W1;U2;V1;W2;U	1	1	1	1
9	650 09 00	Connection plate				
9	650 10 00	Connection plate				
9	657 79 00	Connection plate SCREENED CABLE	1	1	1	1
9	681 58 00	Plate	1	1	1	1
9	698 94 00	Connection plate	1	1	1	1
9	698 95 00	Connection plate	1	1	1	1
10	82 20 88	Drive screw 4X5-A2-70	6	6	4	4
13	642 16 00	Earthing plate	1	1		
14	94 19 22	Control cable SUBCAB 7X1.5 MM2 OD=15-17	*	*	*	*
14	94 19 30	Control cable 25X1.5				
15	397 81 00 (EX)	Gland screw FOR CABLE ENTRY	1	1	1	1
21.1	82 40 61	Plain washer (10)-22 MM	1	1	1	1
21.2	84 17 90	Seal sleeve (10)-12 MM	1	1	1	1
21.2	84 17 92	Seal sleeve (14)-16 MM	1	1	1	1
21.3	678 58 12 (EX)	Cable clip (10)-12 MM	1	1	1	1
21.3	678 58 16 (EX)	Cable clip (14)-16 MM	1	1	1	1
23	94 17 81	Motor cable SCREEN S3X2.5+3X2.5/3+4X1				
23	94 17 82	Motor cable SCREEN S3X6+3X6/3+4X1.5				
23	94 17 84	Motor cable SUBCAB S3X16+3X16/3+4X1.5				

Pos. No	Part. No	Denomination	Qty/Version				
			091	095	181	185	
23	94 20 56	Motor cable 4G6+2X1.5 OD=23-25 MM	Max 70°C (158°F)(23) -25 mm	*	*	*	*
23	94 20 57	Motor cable 4G10+2X1.5 MM2 OD=26-28MM	Max 70°C (158°F)(26) -28 mm	*	*	*	*
23	94 20 59	Motor cable 4G2.5+2X1.5 MM2 OD=17-18	Max 70°C (158°F)(17) -18 mm	*	*	*	*
23	94 20 60	Motor cable 4G4+2X1.5 MM2 OD=20-22 MM	Ø20-22	*	*	*	*
23	94 20 80	Motor cable 7G4+2X1.5 MM2 OD=22-26 MM	Max 70°C (158°F)(22) -26 mm	*	*	*	*
23	94 20 81	Motor cable 7G6+2X1.5 MM2 OD=24-28 MM	Max 70°C (158°F)(24.3) -28.3 mm	*	*	*	*
23	94 20 82	Motor cable 7G2.5+2X1.5 MM2 OD=20-23	Ø20-23	*	*	*	*
23	94 21 02	Motor cable 14AWG/7 OD=18-20 MM	Ø18-20	*	*	*	*
23	94 21 04	Motor cable 12AWG/7 OD=20-22 MM	Subcab 12AWG/7 3.31mm ² (20-22mm).	*	*	*	*
23	94 21 06	Motor cable 10AWG/3-2-1-GC OD=20-22MM	Subcab 10AWG/3-2-1-GC 5.26mm ² (20.3-22.3mm).	*	*	*	*
23	94 21 08	Motor cable 8AWG/3-2-1-GC OD=27-29 MM	Max 70°C (158°F)(27.2) -29.2 mm	*	*	*	*
23	94 21 09	Motor cable 6AWG/3-2-1-GC OD=30-32 MM	Max 70°C (158°F)(30) -32 mm	*	*	*	*
23	94 21 10	Motor cable 4AWG/3-2-1-GC OD=33-35 MM	Max 70°C (158°F)(33) -35 mm	*	*	*	*
24	597 87 01 (EX)	Entrance flange SS	ISO228/1-G1 1/4	1	1	1	1
24	597 87 04 (EX)	Entrance flange ISO 228/1-G2		1	1	1	1
24	597 87 08 (EX)	Entrance flange 2-11.5 NPT		1	1	1	1
24	597 87 11 (EX)	Entrance flange 1 1/2-11.5 NPT		1	1	1	1
24	642 17 01	Entrance flange	Cast iron	1	1	1	1
24.6	633 11 01	Gland screw 1 1/4" ISO.FOR METALHOSE		1	1	1	1
24.6	633 11 04	Gland screw 1 1/2" NPT.FOR METALHOSE		1	1	1	1
25	84 41 09	Plate		1	1	1	1
26	83 04 53	Hex.socket hd screw M12X45-A4-80		2	2	2	2
30	517 38 00	Metal hose ISO 7/1 RP 2"	ISO 7/1 Rp 2, ISO 7/1 R2	1	1	1	1
31	82 74 63	O-ring 49.5X3 NBR		1	1	1	1
31	82 81 03	O-ring 49.5X3 FPM		1	1	1	1

Pos. No	Part. No	Denomination	Qty/Version			
			091	095	181	185
32	642 14 00	Entrance cover			1	1
32	642 14 01 (EX)	Entrance cover	1	1		
32	642 14 04	Entrance cover			1	1
32	642 14 05 (EX)	Entrance cover	1	1		
33	82 71 33	O-ring 175X3 FPM	1	1	1	1
33	82 78 35	O-ring 175X3 NBR	1	1	1	1
35	83 04 56	Hex.socket hd screw M10X35-A4-80	4	4	4	4
45	82 00 11	Hex.socket hd screw M6X12-A2-70	2	2	2	2
49	83 42 48	End sleeve H16/24	3	3	3	3
49	83 42 49	End sleeve H25/30	3	3	3	3
53	82 00 11	Hex.socket hd screw M6X12-A2-70	4	4	4	4
54	642 08 00	Rail	1	1	1	1
56	642 16 00	Earthing plate	2	2	2	2
60	82 56 25	Spring washer 71.5X59.0X0.55	1	1	1	1
61	83 30 16	Ball bearing 3306A-2Z/C3VT113	1	1	1	1
69	642 09 00	Stator housing			1	1
69	642 09 01 (EX)	Stator housing	1	1		
72	82 74 94	O-ring 209.3X5.7 NBR	1	1	1	1
72	82 80 83	O-ring 209.3X5.7 FPM	1	1	1	1
73	641 91 03	Shaft unit	1	1	1	1
73	641 98 05 (EX)	Shaft unit	1	1	1	1
73	641 98 06 (EX)	Shaft unit	1	1	1	1
73	648 61 01 (EX)	Shaft unit	1	1	1	1
79	641 93 01 (EX)	Stator 21-18-4a	1	1	1	1
79	641 93 02 (EX)	Stator 21-18-4a	1	1	1	1
79	641 93 03 (EX)	Stator 21-18-4a	1	1	1	1
79	641 93 04 (EX)	Stator 21-18-4a	1	1	1	1
79	641 93 05 (EX)	Stator 21-18-4a	1	1	1	1

Pos. No	Part. No	Denomination	Qty/Version				
			091	095	181	185	
79	641 93 06 (EX)	Stator 21-18-4a	3-phase, 60 Hz, 380V D.	1	1	1	1
79	641 93 07 (EX)	Stator 21-18-4a	3-phase, 60 Hz, 380V Y.	1	1	1	1
79	641 93 08 (EX)	Stator 21-18-4a	3-phase, 50 Hz, 500V D. 3-phase, 60 Hz, 575 - 600V D.	1	1	1	1
79	641 93 09 (EX)	Stator 21-18-4a	3-phase, 50 Hz, 380V D/660V Y. 3-phase, 60 Hz, 440V D	1	1	1	1
79	641 94 01 (EX)	Stator 21-15-4a	3-phase, 50 Hz, 690VY/400VD. 3-phase, 60Hz, 460VD.	1	1	1	1
79	641 94 02 (EX)	Stator 21-15-4a	3-phase, 50 Hz, 400VY/230VD.	1	1	1	1
79	641 94 03 (EX)	Stator 21-15-4a	3-phase, 50 Hz, 415 - 440VD.	1	1	1	1
79	641 94 04 (EX)	Stator 21-15-4a	3-phase, 60 Hz, 200 - 208V D.	1	1	1	1
79	641 94 05 (EX)	Stator 21-15-4a	3-phase, 60 Hz, 460VYSER/230VY//.	1	1	1	1
79	641 94 06 (EX)	Stator 21-15-4a	3-phase, 60 Hz, 380V D.	1	1	1	1
79	641 94 07 (EX)	Stator 21-15-4a	3-phase, 60 Hz, 380V Y	1	1	1	1
79	641 94 08 (EX)	Stator 21-15-4a	3-phase, 50 Hz, 500VD. 3-phase, 60 Hz, 575 - 600V D	1	1	1	1
79	641 94 09 (EX)	Stator 21-15-4a	3-phase, 50 Hz, 660VY/380VD. 3-phase, 60 Hz, 440V D.	1	1	1	1
79	647 27 01 (EX)	Stator 21-18-6	3-phase, 50 Hz, 690VY/400VD. 3-phase, 60 Hz, 460V D.	1	1	1	1
79	647 27 02 (EX)	Stator 21-18-6	3-phase, 50 Hz, 400VY/230VD.	1	1	1	1
79	647 27 03 (EX)	Stator 21-18-6	3-phase, 50 Hz, 415 - 440V D.	1	1	1	1
79	647 27 04 (EX)	Stator 21-18-6	3-phase, 60 Hz, 200 - 208V D.	1	1	1	1
79	647 27 05 (EX)	Stator 21-18-6	3-phase, 60 Hz, 460VY SER/230VY //.	1	1	1	1
79	647 27 06 (EX)	Stator 21-18-6	3-phase, 60 Hz, 380V D.	1	1	1	1
79	647 27 07 (EX)	Stator 21-18-6	3-phase, 60 Hz, 380V Y.	1	1	1	1
79	647 27 08 (EX)	Stator 21-18-6	3-phase, 50 Hz, 500VD. 3-phase, 60 Hz, 575 - 600VD.	1	1	1	1
79	647 27 09 (EX)	Stator 21-18-6	3-phase, 50 Hz, 660VY/380VD. 3-phase, 60 Hz, 440V D.	1	1	1	1
79	654 95 03	Stator 21-18-4a	3-phase, 50 Hz, 415 - 440VD. With thermistor.			1	1

Pos. No	Part. No	Denomination	Qty/Version			
			091	095	181	185
79	654 96 03	Stator 21-15-4a			1	1
79	659 48 03	Stator 21-18-6			1	1
79	661 39 01 (EX)	Stator 21-18-2b	1	1	1	1
79	661 39 02 (EX)	Stator 21-18-2b	1	1	1	1
79	661 39 03 (EX)	Stator 21-18-2b	1	1	1	1
79	661 39 04 (EX)	Stator 21-18-2b	1	1	1	1
79	661 39 07 (EX)	Stator 21-18-2b	1	1	1	1
79	661 39 08 (EX)	Stator 21-18-2b	1	1	1	1
79	689 07 01	Stator 21-18-2b			1	1
79	702 44 01	Stator 21-18-2f	1	1	1	1
79	702 44 02	Stator 21-18-2f	1	1	1	1
79	702 44 03	Stator 21-18-2f	1	1	1	1
79	702 44 04	Stator 21-18-2f	1	1	1	1
79	702 44 07	Stator 21-18-2f	1	1	1	1
79	702 44 08	Stator 21-18-2f	1	1	1	1
79	702 45 07	Stator 21-18-2f			1	1
82	608 12 00	Cooling jacket OUTER	1	1	1	1
82	608 12 01	Cooling jacket OUTER	1	1	1	1
83	82 71 70	O-ring 221.84X3.53 FPM	1	1	1	1
83	82 78 49	O-ring 221.84X3.53 NBR	1	1	1	1
84	82 75 01	O-ring 279.3X5.7 NBR	1	1	1	1
84	82 75 22	O-ring 279.3X5.7 FPM	1	1	1	1
101	650 51 00	Cable unit FLS10	1	1	1	1
103	663 04 00 (EX)	Level sensor FLS10	1	1	1	1
105	642 10 00	Bearing holder			1	1
105	642 10 01 (EX)	Bearing holder	1	1		
107	82 59 06	Retaining ring SGA 40	1	1	1	1

Pos. No	Part. No	Denomination	Qty/Version			
			091	095	181	185
108	82 44 15	Supporting washer 40X50X2.5- SPRING STEEL	1	1	1	1
109	83 30 18	Ball bearing 3308A-2Z/C3VT113	1	1	1	1
110	83 07 62	Retaining ring JB 90	1	1	1	1
120	642 13 00	Plug	1	1	1	1
122	82 76 85	O-ring 17X3 NBR	1	1	1	1
122	82 79 15	O-ring 17X3 FPM	1	1	1	1
129	642 12 00	Seal housing cover	1	1	1	1
130	82 78 39	O-ring 230X3 NBR	1	1	1	1
133	83 04 56	Hex.socket hd screw M10X35-A4-80	6	6	6	6
141	641 50 30	Mechanical seal DIAM.35	1	1	1	1
141	641 50 31	Mechanical seal	1	1	1	1
145	83 04 53	Hex.socket hd screw M12X45-A4-80	4	4	4	4
228	663 85 00	Connection plate	1	1	1	1
229	667 40 01	Sticker	2	2	2	2
231	93 00 77	Shrink hose ID 6.4	*	*	*	*
231	93 00 78	Shrink hose ID 9.5	*	*	*	*
232	83 53 58	Terminal clamp WDU6/10	3	3	4	4
233	83 53 17	Terminal clamp WDU35/IK/ZA	6	6	6	6
233	83 53 61	Terminal clamp WDU16,1000V	8	8	8	8
234	83 53 49	Cross connection WQW35/2	3	3	3	3
234	83 53 67	Cross connection WQV16/2	4	4	4	4
234	650 20 02	Cross connection	1	1	1	1
234	650 20 03	Cross connection	1	1	1	1
235	83 53 54	End support WEW 35/2	2	2	2	2
236	83 53 50	Partition	1	1	1	1
239	441 46 00	El.lead through unit	1	1	1	1
239	734 59 00	El.lead through unit	1	1	1	1
240	607 48 00	Spring	1	1	1	1
241	82 71 33	O-ring 175X3 FPM	1	1	1	1
241	82 78 35	O-ring 175X3 NBR	1	1	1	1
242	608 22 10	adapter			1	1
242	608 22 11 (EX)	adapter	1	1		
242	642 11 00	adapter			1	1
242	642 11 01 (EX)	adapter	1	1		
243	83 02 97	Hex.socket hd screw M8X16-A4-70	2	2	2	2

Pos. No	Part. No	Denomination	Qty/Version			
			091	095	181	185
245	82 75 01	O-ring 279.3X5.7 NBR	1	1	1	1
245	82 75 22	O-ring 279.3X5.7 FPM	1	1	1	1
246	82 78 39	O-ring 230X3 NBR	1	1	1	1
247	82 95 69	O-ring 84.4X4 FPM	1	1	1	1
248	608 27 00	Strip	1	1	1	1
249	82 32 50	Clip	1	1	1	1
251	642 13 00	Plug	2	2	2	2
252	82 76 85	O-ring 17X3 NBR	2	2	2	2
252	82 79 15	O-ring 17X3 FPM	2	2	2	2
253	608 13 00	Cooling jacket INNER	1	1	1	1
254	608 14 00	Flow diffusor	1	1	1	1
256	608 42 00	Wire bow	4	4	4	4
264	82 40 69	Plain washer (33)-35 MM	4	4	4	4
264	82 40 81	Plain washer (14)-20 MM	4	4	4	4
264	82 40 82	Plain washer (20)-32 MM	4	4	4	4
265	84 18 01	Seal sleeve (17)-20 MM	2	2	2	2
265	84 18 02	Seal sleeve (20)-23 MM	2	2	2	2
265	84 18 03	Seal sleeve (23)-26 MM	2	2	2	2
265	84 18 04	Seal sleeve (26)-29 MM	2	2	2	2
265	84 18 05	Seal sleeve (29)-32 MM	2	2	2	2
265	84 18 06	Seal sleeve (32)-35 MM	2	2	2	2
266	597 98 02	Ring	1	1	1	1
270	608 31 00	Lock washer	1	1		
313	82 71 72	O-ring 71.2X3 FPM	1	1	1	1
912	82 76 85	O-ring 17X3 NBR	3	3	3	3
912	82 79 15	O-ring 17X3 FPM	3	3	3	3
					Extra O-rings for Inspection screws	
					Extra O-rings for Inspection screws	

Hydraulic Parts

Overview

Table of Contents

This chapter contains the following topics:

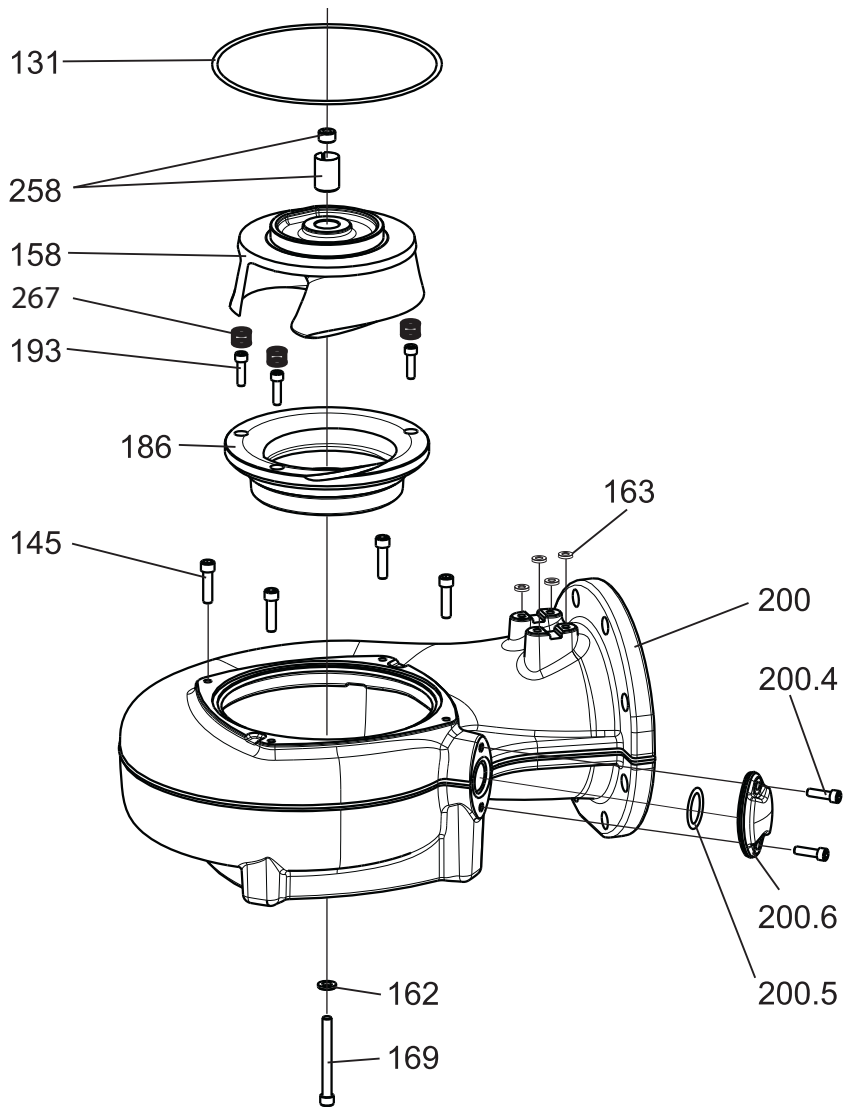
Topic	
N_ LT	25
4-pole	25
6-pole	26
N_ MT	27
N_ HT	28
N_ SH	29
List.....	30

N_ LT

4-pole

“LT” low head. Curve: 410 – 416

N_ 3153 LT

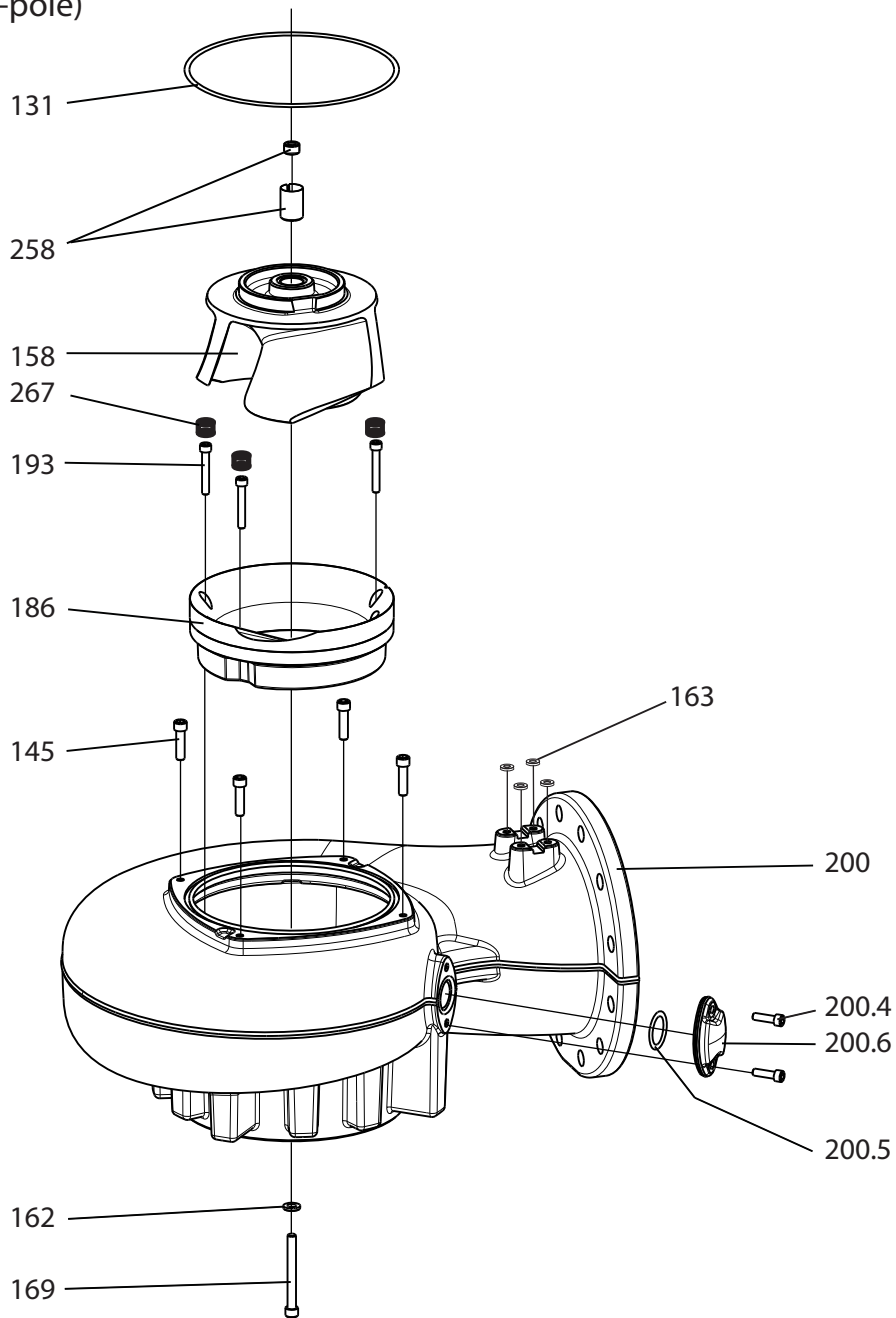


31261

6-pole

“LT” low head. Curve: 620, 621, 622, 623, 624, 625

N_ 3153 LT (6-pole)

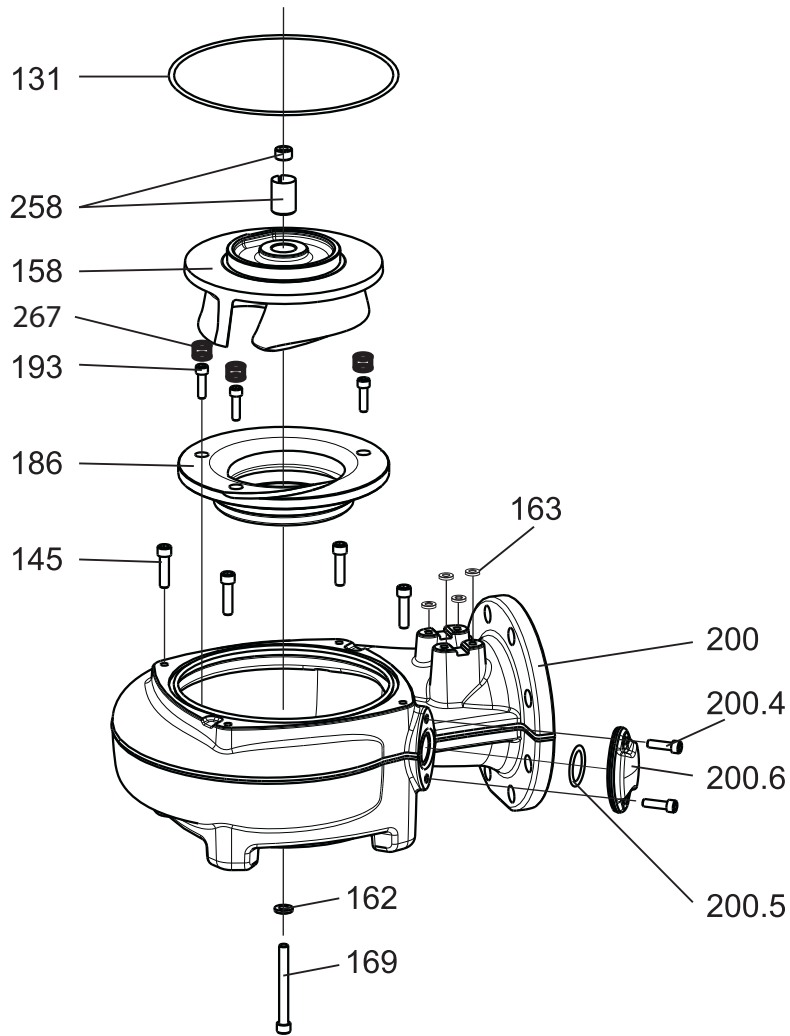


31364

N_ MT

“MT” medium head. Curve: 430–437

N_ 3153 MT

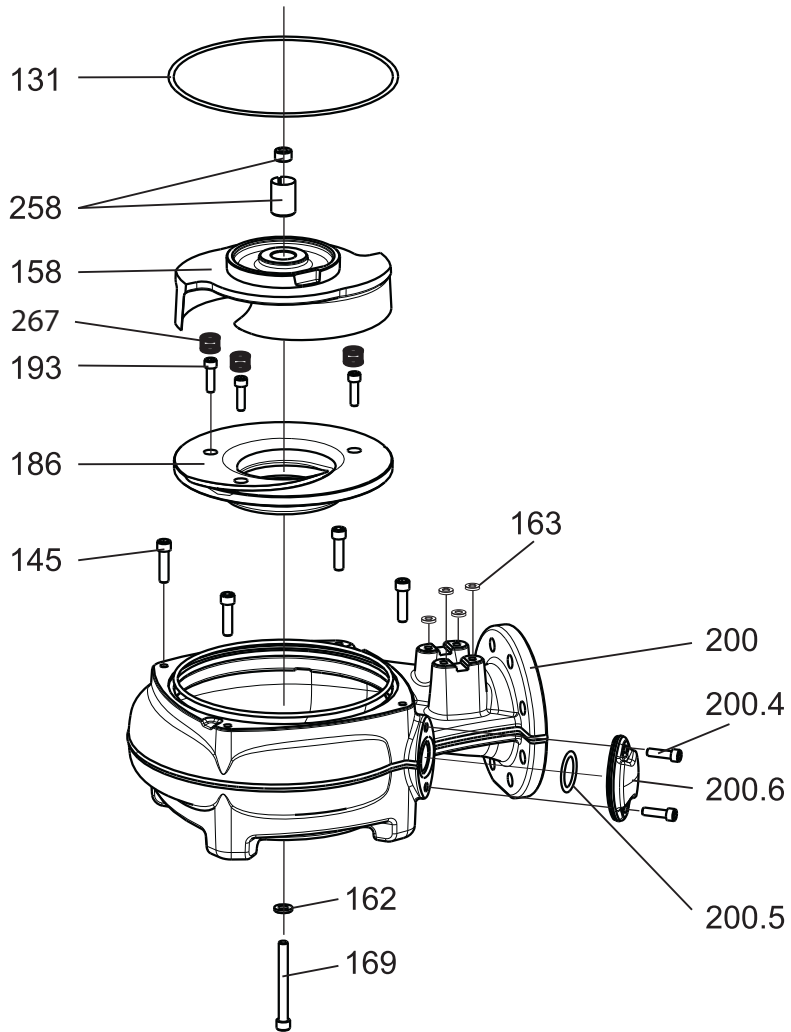


31260

N_ HT

“HT” high head. Curve: 450, 451, 453–456, 461-466

N_ 3153 HT

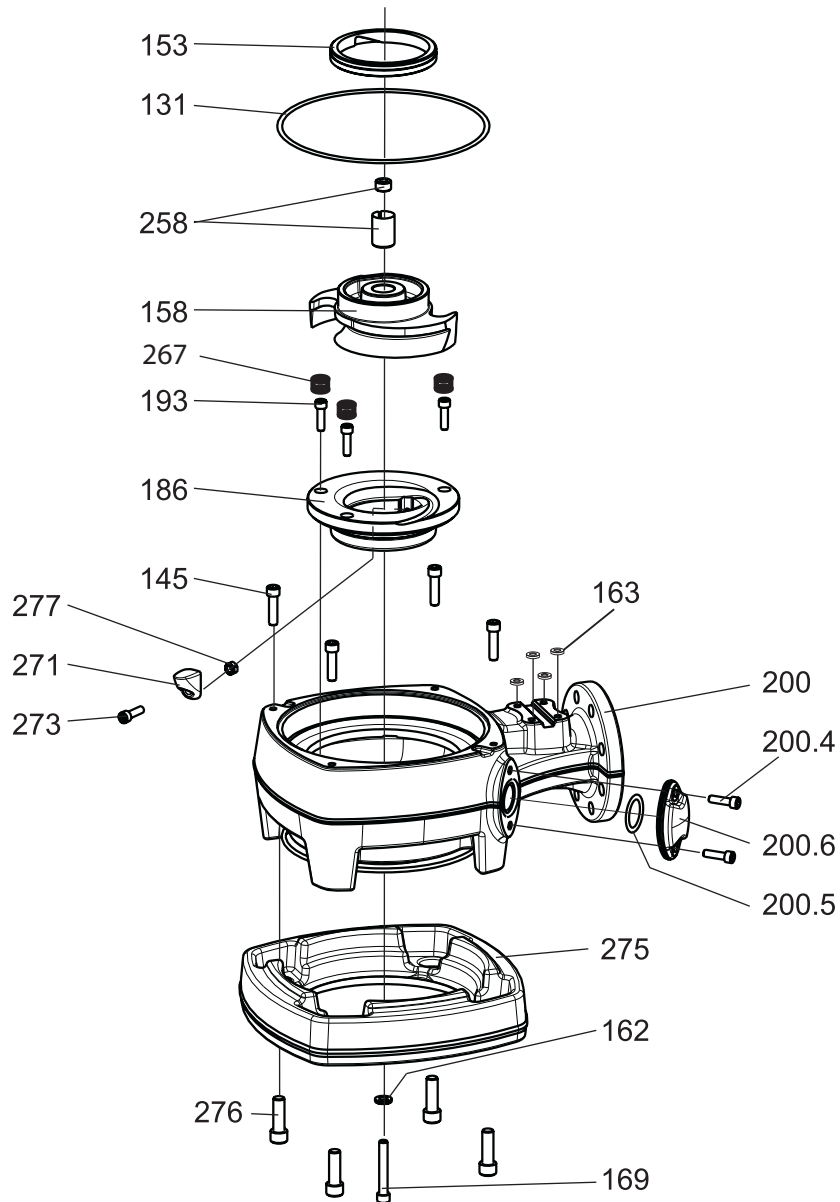


31259

N_ SH

“SH” super high head. Curve: 270, 272-276

N_ 3153 SH



31258

List

Pos. No	Part. No	Denomination	Qty/Version			
			091	095	181	185
131	82 75 01	O-ring 279.3X5.7 NBR	1	1	1	1
131	82 75 22	O-ring 279.3X5.7 FPM	1	1	1	1
153	681 28 00	Insert ring	1	1	1	1
158	605 94 00	Impeller			1	
		"HT" High head. Curve no: 461, 60 Hz, 3-phase	1			
158	605 94 09	Impeller			1	
		"HT" High head. Curve: 462, 60 Hz, 3-phase	1			
158	605 94 22	Impeller			1	
		"HT" High head. Curve no: 463, 60 Hz, 3-phase	1			
158	605 94 32	Impeller			1	
		"HT" High head. Curve no: 464, 60 Hz, 3-phase	1			
158	605 94 46	Impeller			1	
		"HT" High head. Curve no: 465, 60 Hz, 3-phase	1			
158	605 94 55	Impeller			1	
		"HT" High head. Curve no: 466, 60 Hz, 3-phase	1			
158	654 77 00	Impeller			1	
		"LT" Low head. Curve no: 620, 50 Hz, 3-phase	1			
158	654 77 15	Impeller			1	
		"LT" Low head. Curve no: 621, 50 Hz, 3-phase	1			
158	654 77 30	Impeller			1	
		"LT" Low head. Curve no: 622, 50/60 Hz, 3-phase	1			
158	654 77 45	Impeller			1	
		"LT" Low head. Curve no: 623, 50/60 Hz, 3-phase	1			
158	654 77 62	Impeller			1	
		"LT" Low head. Curve no: 624, 50/60 Hz, 3-phase	1			
158	654 77 81	Impeller			1	
		"LT" Low head. Curve no: 625, 50/60 Hz, 3-phase	1			
158	685 15 00	Impeller			1	
		"SH" Super high head. Curve no: 270, 50 Hz, 3-phase	1			
158	685 15 18	Impeller			1	
		"SH" Super high head. Curve no: 272, 50 Hz, 3-phase	1			
158	685 15 27	Impeller			1	
		"SH" Super high head. Curve no: 273, 50/60 Hz, 3-phase	1			
158	685 15 39	Impeller			1	
		"SH" Super high head. Curve no: 274, 50/60 Hz, 3-phase	1			
158	685 15 48	Impeller			1	
		"SH" Super high head. Curve: 275, 50/60 Hz, 3-phase	1			
158	685 15 57	Impeller			1	
		"SH" Super high head. Curve: 276, 50/60 Hz, 3-phase	1			
158	696 48 00	Impeller			1	
		"HT" High head. Curve no: 450, 50 Hz, 3-phase	1			
158	696 48 14	Impeller			1	
		"HT" High head. Curve no: 451, 50 Hz, 3-phase	1			

Pos. No	Part. No	Denomination	Qty/Version				
			091	095	181	185	
158	696 48 28	Impeller	"HT" High head. Curve no: 453, 50/60 Hz, 3-phase.	1		1	
158	696 48 39	Impeller	"HT" High head. Curve no: 454, 50 Hz, 3-phase.	1		1	
158	696 48 50	Impeller	"HT" High head. Curve no: 455, 50 Hz, 3-phase.	1		1	
158	696 48 60	Impeller	"HT" High head. Curve no: 456, 50 Hz, 3-phase.	1		1	
158	696 49 00	Impeller	"MT" Medium head. Curve no: 430, 50 Hz, 3-phase	1		1	
158	696 49 08	Impeller	"MT" Medium head. Curve no: 431, 50 Hz, 3-phase	1		1	
158	696 49 20	Impeller	"MT" Medium head. Curve no: 432, 50 Hz, 3-phase	1		1	
158	696 49 32	Impeller	"MT" Medium head. Curve no: 433, 50/60 Hz, 3-phase	1		1	
158	696 49 42	Impeller	"MT" Medium head. Curve no: 434, 50/60 Hz, 3-phase	1		1	
158	696 49 52	Impeller	"MT" Medium head. Curve no: 435, 50/60 Hz, 3-phase	1		1	
158	696 49 65	Impeller	"MT" Medium head. Curve no: 436, 50/60 Hz, 3-phase	1		1	
158	696 49 75	Impeller	"MT" Medium head. Curve no: 437, 60 Hz, 3-phase	1		1	
158	696 50 00	Impeller	"LT" Low head. Curve 410, 50 Hz, 3-phase	1		1	
158	696 50 10	Impeller	"LT" Low head. Curve 411, 50 Hz, 3-phase	1		1	
158	696 50 22	Impeller	"LT" Low head. Curve 412, 50 Hz, 3-phase	1		1	
158	696 50 33	Impeller	"LT" Low head. Curve 413, 50/60 Hz, 3-phase	1		1	
158	696 50 43	Impeller	"LT" Low head. Curve 414, 50/60 Hz, 3-phase	1		1	
158	696 50 57	Impeller	"LT" Low head. Curve 415, 50/60 Hz, 3-phase	1		1	
158	696 50 63	Impeller	"LT" Low head. Curve 416, 60 Hz, 3-phase	1		1	
158	698 71 14	Impeller	"HT" High head. Curve 451, 50 Hz, 3-phase		1		1
158	698 71 39	Impeller	"HT" High head. Curve 454, 50 Hz, 3-phase		1		1
158	698 72 08	Impeller	"MT" Medium head. Curve: 431, 50 Hz, 3-phase		1		1
158	698 72 42	Impeller	"MT" Medium head. Curve: 434, 50/60 Hz, 3-phase		1		1

Pos. No	Part. No	Denomination	Qty/Version			
			091	095	181	185
158	698 72 65	Impeller		1		1
158	698 73 00	Impeller		1		1
158	698 73 33	Impeller		1		1
158	698 73 57	Impeller		1		1
158	699 26 18	Impeller		1		1
158	699 26 39	Impeller		1		1
158	699 26 57	Impeller		1		1
158	703 20 09	Impeller		1		1
158	703 20 32	Impeller		1		1
158	704 36 00	Impeller		1		1
158	704 36 30	Impeller		1		1
158	704 36 62	Impeller		1		1
162	82 38 00	Plain washer STAINLESS STEEL A4	1	1	1	1
163	82 69 40	Protective plug	4	4	4	4
169	83 04 55	Hex.socket hd screw M12X110-A4-80	1	1	1	1
169	83 04 66	Hex.socket hd screw M12X80-A4-80	1	1	1	1
186	702 28 00	Insert ring	1		1	
186	702 29 00	Insert ring		1		1
186	702 82 00	Insert ring	1		1	
186	702 83 00	Insert ring		1		1
186	702 85 00	Insert ring	1		1	
186	702 85 01	Insert ring	1		1	
186	702 86 00	Insert ring		1		1
186	702 86 01	Insert ring		1		1
186	702 88 00	Insert ring	1		1	
186	702 89 00	Insert ring		1		1
186	704 66 00	Insert ring	1		1	

Pos. No	Part. No	Denomination	Qty/Version			
			091	095	181	185
186	704 67 00	Insert ring	"LT" 6-pole version 095/185			
193	82 00 60	Hex.socket hd screw M10X70-A2-70	3	3	3	3
193	83 04 56	Hex.socket hd screw M10X35-A4-80	3	3	3	3
200	702 27 00	Pump housing	1	1	1	1
200	702 27 03	Pump housing	1	1	1	1
200	702 27 06	Pump housing	1	1	1	1
200	702 81 00	Pump housing	1	1	1	1
200	702 81 01	Pump housing	1	1	1	1
200	702 81 03	Pump housing	1	1	1	1
200	702 81 05	Pump housing	1	1	1	1
200	702 84 00	Pump housing	1	1	1	1
200	702 84 01	Pump housing	1	1	1	1
200	702 84 03	Pump housing	1	1	1	1
200	702 84 05	Pump housing	1	1	1	1
200	702 84 10	Pump housing	1	1	1	1
200	702 84 13	Pump housing	1	1	1	1

Pos. No	Part. No	Denomination	Qty/Version				
			091	095	181	185	
200	702 84 20	Pump housing	"SH" Super high head DN 100. With outlet sealing. With or without guide pin. Prep. for Flush valve.	1	1	1	1
200	702 84 23	Pump housing	"SH" Super high head DN 100. Dr. inlet. With outlet sealing. With or without guide pin. Prep for f. valve and z. anodes.	1	1	1	1
200	702 87 00	Pump housing	"LT" Low head DN 200. Undrilled inlet. Prepared for Flush valve.	1	1	1	1
200	702 87 03	Pump housing	"LT" Low head DN 200. Drilled inlet. Prepared for zinc anodes (only for P and S installation). Prepared for Flush valve	1	1	1	1
200	702 87 06	Pump housing	"LT" Low head DN 200. Drilled to: EN 1092-2 tab.8, ANSI B16.1-89; tab.5. Prepared for Flush valve.	1	1	1	1
200	702 87 07	Pump housing	"LT" Low head DN 200. Drilled to: EN 1092-2 tab.9. Prepared for Flush valve.	1	1	1	1
200	704 65 00	Pump housing	"LT" Low head DN 250. Undrilled. Prepared for flush valve.	1	1	1	1
200	704 65 01	Pump housing	"LT" Low head DN 250. Drilled to EN 1092-2 tab.8. Prepared for flush valve.	1	1	1	1
200	704 65 03	Pump housing	"LT" Low head DN 250. Drilled for S, T, Z and zinc anodes. Prepared for flush valve.	1	1	1	1
200	704 65 05	Pump housing	"LT" Low head DN 250. Drilled to ANSI B16.1-89; tab.5. Prepared for flush valve.	1	1	1	1
200	704 65 07	Pump housing	"LT" Low head DN 250. Drilled to EN 1092-2 tab.9. Prepared for flush valve.	1	1	1	1
200.3	84 90 93	Seal ring	Intended for pumphousing 7028410, 7028413	1	1	1	1
200.3	84 90 94	Seal ring	Intended for pumphousing 7028420, 7028423	1	1	1	1
200.4	83 04 56	Hex.socket hd screw M10X35-A4-80		2	2	2	2
200.5	82 81 93	O-ring 44,2X5,7 FPM		1	1	1	1
200.6	648 00 00	Cover		1	1	1	1
258	720 14 00	Sleeve unit		1	1	1	1
267	725 06 00	Plug		3	3	3	3
271	703 22 00	Lip		1	1	1	1
273	83 04 56	Hex.socket hd screw M10X35-A4-80		1	1	1	1
275	679 01 01	Counter weight		1	1	1	1

Pos. No	Part. No	Denomination	Qty/Version			
			091	095	181	185
276	82 01 07	Hex.socket hd screw M16X50-A2-70	4	4	4	4
277	82 23 33	Hexagon nut M10-A4-70	1	1	1	1

Sump Components

Overview

Table of Contents

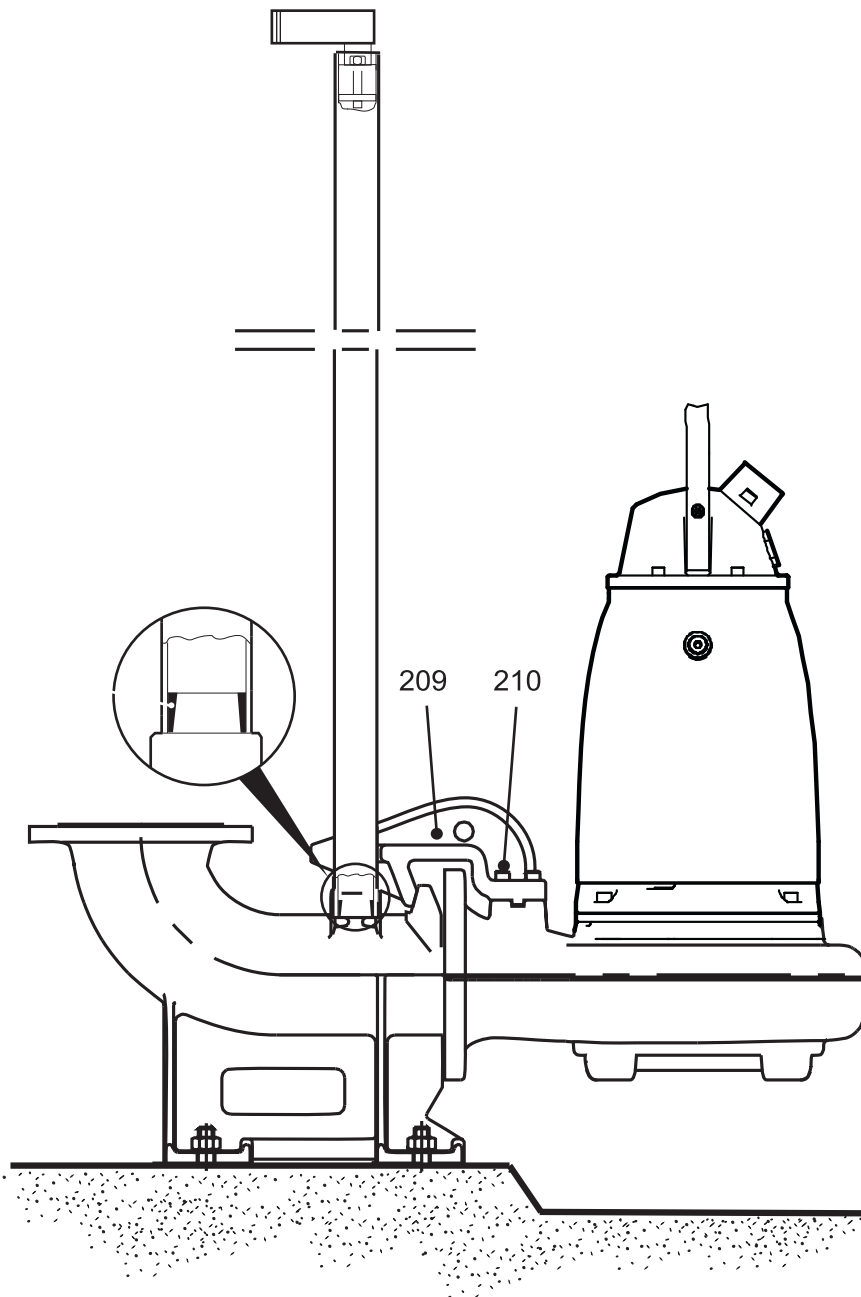
This chapter contains the following topics:

Topic	
NP	37
Discharge Connection	37
Hydroejector	38
NS	39
Hose	39
Quick Coupling.....	40
NT LT	41
NT MT/HT/SH	42
NZ.....	43
List.....	44

NP

Discharge Connection

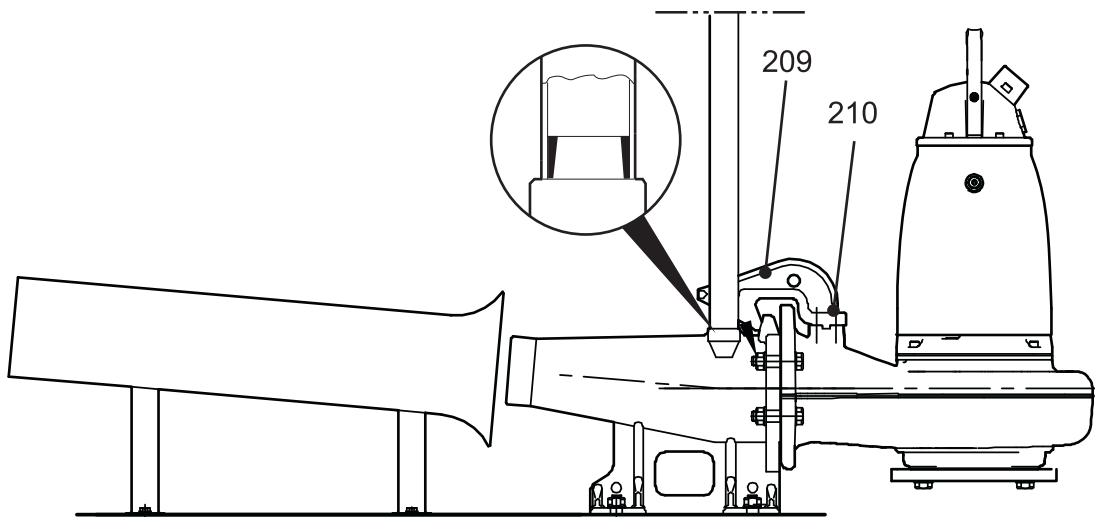
NP 3153



30582

Hydrojector

NP 3153 Hydrojector

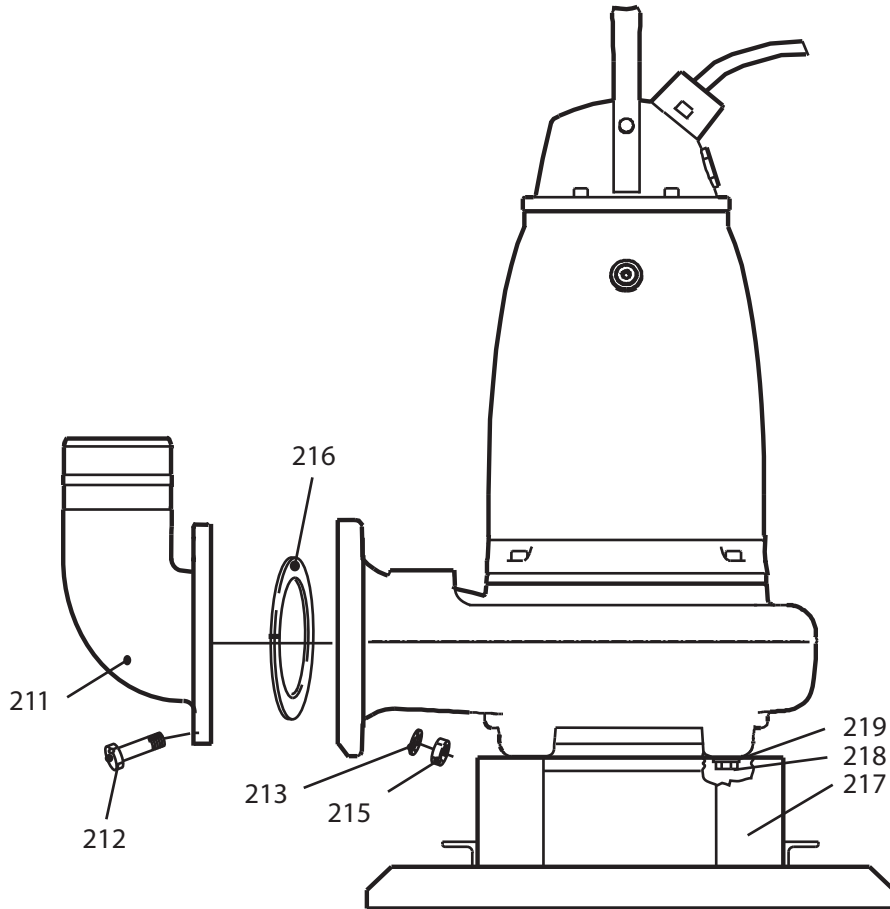


31114

NS

Hose

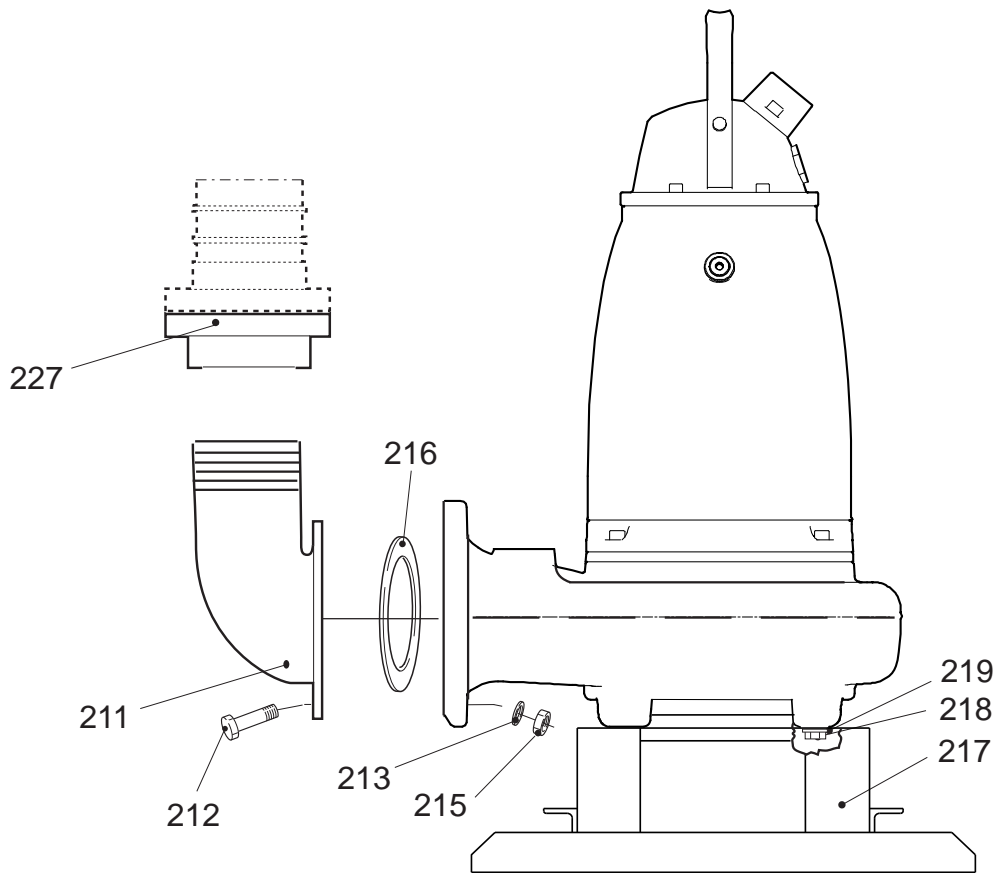
NS 3153



30783

Quick Coupling

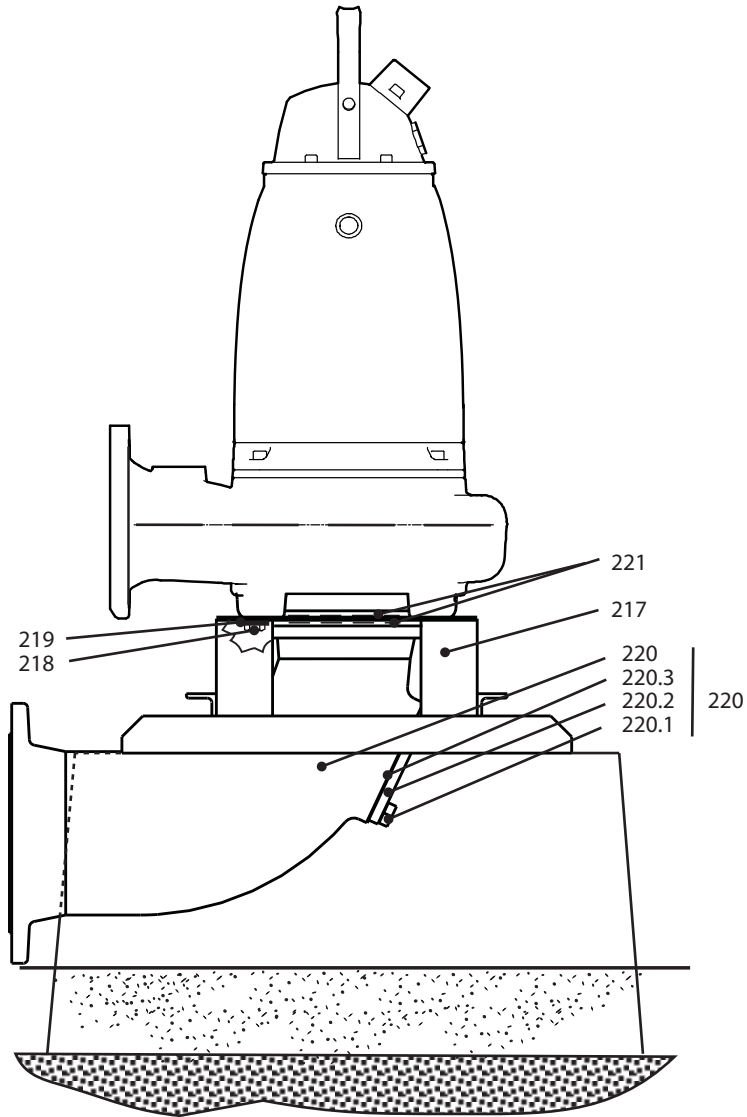
NS 3153



30792

NT LT

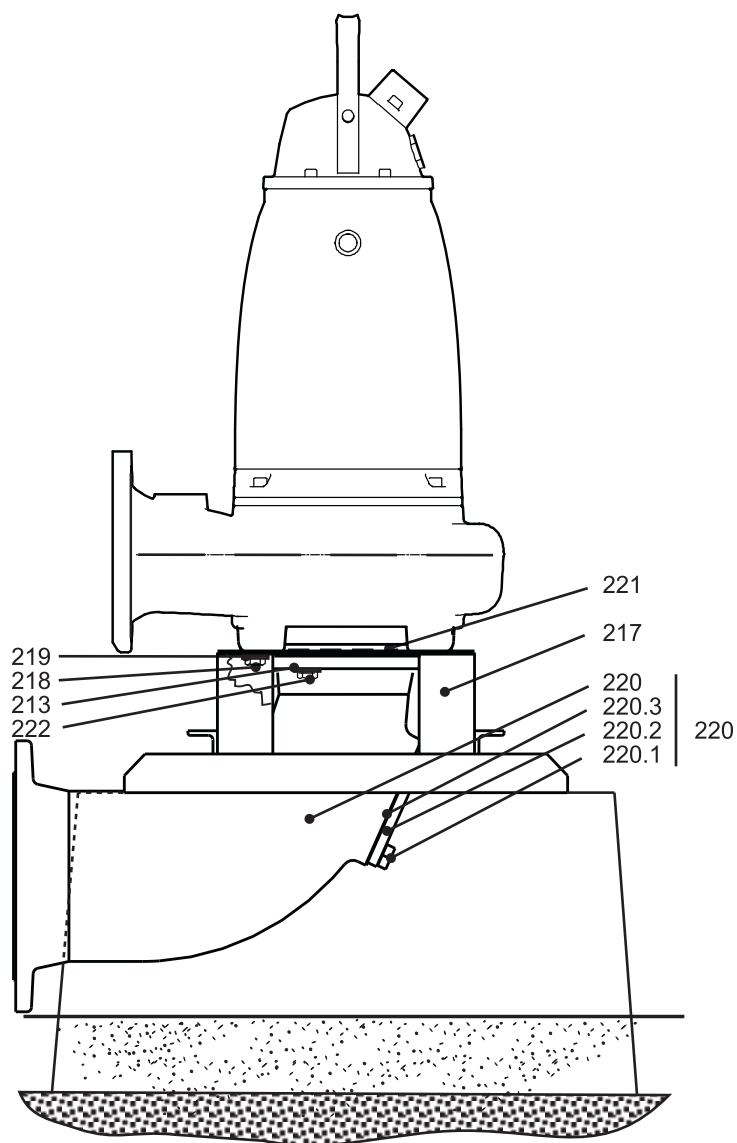
NT 3153



30793

NT MT/HT/SH

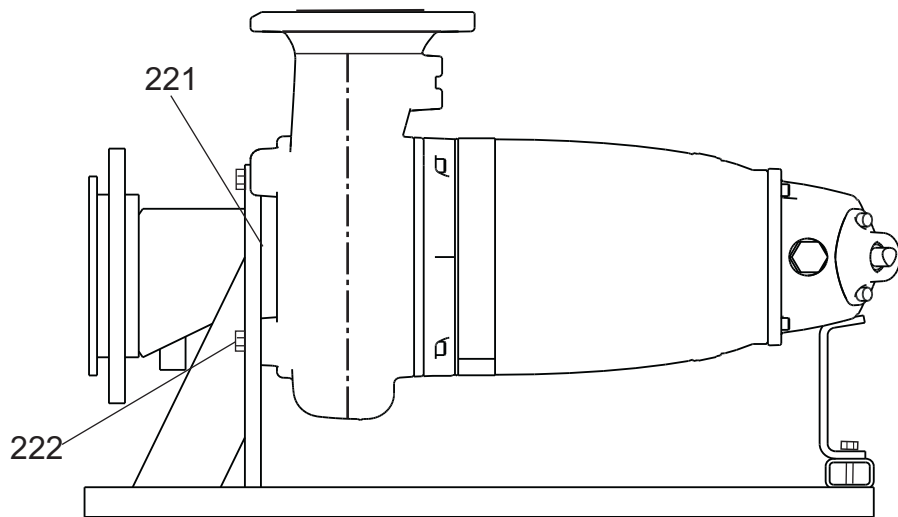
NT 3153



30784

NZ

NZ 3153



30785

List

Pos. No	Part. No	Denomination	Qty/Version				
			091	095	181	185	
209	651 07 01	Sliding bracket	1	1	1	1	
210	83 04 53	Hex.socket hd screw M12X45-A4-80	4	4	4	4	
211	259 82 04	Discharge connection	"HT/SH" Super/High head version DN 100 (4")	1	1	1	1
211	259 84 05	Discharge connection	"HT/SH" Super/High head version DN 100 (4") Threaded 4-8 NPSM Outer	1	1	1	1
211	259 84 06	Discharge connection	"HT" High head version DN 100 (4"), Thread : ISO G4A Outer	1	1	1	1
211	281 79 00	Discharge connection	"LT" Low head version DN 200 (8")	1	1	1	1
211	295 57 00	Discharge connection	"MT" Medium head version DN 150 (6")	1	1	1	1
211	309 31 00	Discharge connection	"MT" Medium head version DN 150 (6") Threaded 6-8 NPSM Outer	1	1	1	1
211	309 31 01	Discharge connection	"MT" Medium head version DN 150 (R6") Thread : ISO G6A Outer. Quick coupling: Storz	1	1	1	1
211	310 03 01	Discharge connection	"SH" Super high head version DN 75	1	1	1	1
211	379 32 00	Discharge connection	"LT" Low head version DN 200 (8")	1	1	1	1
211	385 52 03	Discharge connection 3-8 NPSM	"SH" Super high head version DN 75 Threaded:3-8 NPSM Outer	1	1	1	1
211	385 52 04	Discharge connection ISO G3	"SH" Super high head version DN 75 Threaded:ISO G3 Outer	1	1	1	1
211	479 26 00	Discharge connection	"LT" Low head version DN 250 (10")	1	1	1	1
212	81 49 36	Hexagon head screw M16X65-A4-70		4	4	4	4
212	84 34 07	Hexagon head screw M16X60-A2-70	Intended for, S -version "HT"	4	4	4	4
212	84 34 32	Hexagon head screw M20X70-A2-70	S-version "MT"	8	8	8	8
212	84 34 34	Hexagon head screw M20X80-A2-70	S-version "LT"	12	12	12	12
213	82 35 23	Plain washer 16-A2-A-170		8	8	4	4
213	82 35 26	Plain washer 20-A2-A-170		8	8	8	8
215	82 23 61	Hexagon nut M16-A2-70		4	4	4	4
215	82 23 62	Hexagon nut M20-A2-70		12	12	12	12
216	259 83 00	Gasket 4"		1	1	1	1
216	283 19 00	Gasket 8"		1	1	1	1
216	295 64 00	Gasket 6"		1	1	1	1

Pos. No	Part. No	Denomination	Qty/Version			
			091	095	181	185
216	310 05 00	Gasket				
		Intended for "SH"	1	1	1	1
216	384 45 00	Gasket 8"	1	1	1	1
217	380 92 01	Stand compl.				
		S/T-installation LT, DN 250	1	1	1	1
217	380 92 02	Stand compl.				
		S-installation LT DN, 200/250, T-installation LT DN 300	1	1	1	1
217	396 11 00	Stand compl.				
		S-installation MT, DN 150, HT/SH, DN 100, SH, DN 75. T-installation MT, DN 200, HT/SH, DN 150	1	1	1	1
217	608 23 02	Stand	1	1	1	1
218	81 43 73	Hexagon head screw M20X100-A2-70				
		T-version "LT"	12	12	12	12
218	84 34 03	Hexagon head screw M16X40-A2-70				
		T-version"MT", "HT", "SH", S-version "MT", "HT", "SH"	4	4	4	4
218	84 34 28	Hexagon head screw M20X50-A2-70 (ONLY TRSP)				
		T/S-version "LT"	4	4	4	4
218	84 34 32	Hexagon head screw M20X70-A2-70				
			4	4	4	4
218	84 34 34	Hexagon head screw M20X80-A2-70				
		T/S-version "LT"	4	4	4	4
219	82 35 23	Plain washer 16-A2-A-170		4		
219	82 35 26	Plain washer 20-A2-A-170	12	12	12	12
219	82 38 01	Plain washer STAINLESS STEEL A4	4	4	4	4
220	272 82 20	Suction pipe unit				
		"SH" Super high head DN200.	1	1	1	1
220	272 82 26	Suction pipe unit				
		"SH" Super high head DN200.	1	1	1	1
220	272 82 27	Suction pipe unit				
		"SH" Super high head DN200.	1	1	1	1
220	295 60 20	Suction pipe unit				
		"HT/SH" Super High head version DN 150 (6"). Undrilled	1	1	1	1
220	295 60 26	Suction pipe unit				
		"HT/SH" Super/ High head version DN 150 (6"). Drilled to EN 1092-2 tab.9, ANSI B16.1-89; tab.5	1	1	1	1
220	381 77 30	Suction connect.unit				
		"MT/HT" Medium/High head DN250.	1	1	1	1
220	381 77 31	Suction pipe unit				
		"MT/HT" Medium/High head DN250. Drilled to EN1092-2 tab.8.	1	1	1	1
220	381 77 35	Suction pipe unit				
		"MT/HT" Medium/High head DN250. Drilled to ANSI B16.1-89; tab.5.	1	1	1	1
220	381 77 37	Suction pipe unit				
		"MT/HT" Medium/High head DN250. Drilled to EN1092-2 tab.9.	1	1	1	1
220	384 74 00	Suction connect.unit				
		"MT" Medium head DN300.	1	1	1	1
220	384 74 01	Suction pipe unit				
		"MT" Medium head DN300. Drilled to EN1092-2 tab.8.	1	1	1	1
220	384 74 05	Suction pipe unit				
		"MT" Medium head DN300. Drilled to ANSI B16.1-89; tab.5.	1	1	1	1

Pos. No	Part. No	Denomination	Qty/Version			
			091	095	181	185
220	384 74 07	Suction pipe unit "MT" Medium head DN300. Drilled to EN1092-2 tab.9.	1	1	1	1
220.1	81 41 56	Hexagon head screw M12X35-A2-70 Intended for 3817730, 31, 35, 37; 3847400, 01, 05, 07.	4	4	4	4
220.1	81 52 17	Hexagon head screw 1/2 UNCX32-A2-70 (SH, HT) DN 150	4	4	4	4
220.1	81 52 49	Hexagon head screw U6S 3/4 UNCX32-A2-70	4	4	4	4
220.2	274 45 00	Cleaning door Intended for 2728220, 26 ,27.	1	1	1	1
220.2	274 45 01	Cleaning door Intended for 3817730, 31, 35, 37, 3847400, 01, 05, 07.	1	1	1	1
220.2	295 53 00	Cleaning door (SH, HT) DN 150	1	1	1	1
220.3	274 48 00	Gasket (MT, LT) DN 200/250/300	1	1	1	1
220.3	295 54 00	Gasket (SH, HT) DN 150	1	1	1	1
221	84 65 82	Gasket 250 PN 10	2	2	2	2
221	84 65 87	Gasket 150 PN10	1	1	1	1
221	84 65 88	Gasket 200 PN10	2	2	2	2
221	84 65 93	Gasket 125 PN10	1	1	1	1
222	81 41 81	Hexagon head screw M16X40-A4-70	4	4	4	4
222	81 49 56	Hexagon head screw M20X50-A4-70	4	4	4	4
222	81 55 40	Hexagon head screw M16X50 A4-70	4	4	4	4
222	84 34 05	Hexagon head screw M16X50-A2-70	4	4	4	4
222	84 34 07	Hexagon head screw M16X60-A2-70	4	4	4	4
222	84 34 32	Hexagon head screw M20X70-A2-70	12	12	12	12
227	83 19 33	Coupling part DN 100 G4" INNER STORZ			1	1
227	83 19 34	Coupling part DN 110 G4" INNER STORZ	1	1	1	1
227	83 19 36	Coupling part DN 150 G6B INNER STORZ	1	1	1	1

Parts for Service

List

Pos. No	Part. No	Denomination	Qty/Version				
			091	095	181	185	
800	84 15 47	O-ring kit INTERMEDIATE SERVICE KIT	NBR O-rings < = 70 DEGR.C	1	1	1	1
800	84 15 48	O-ring kit INTERMEDIATE SERVICE KIT	FPM O-rings , Industry	1	1	1	1
900	657 17 08	Basic repair kit	NBR O-rings < = 70 DEGR.C DEGR.C. Standard. Incl. Mechanical Seal WCCR/WCCR	1	1	1	1
900	657 17 09	Basic repair kit	Warm water. Incl. 641 50 00 Mechanical Seal WCCR/WCCR	1	1	1	1
900	657 17 10	Basic repair kit	NBR O-rings < = 70 DEGR.C. Incl. Mechanical Seal WCCR/RSiC	1	1	1	1
900	657 17 11	Basic repair kit	FPM O-rings Industry. Incl. Mechanical Seal WCCR/RSiC	1	1	1	1
901	90 37 08	Monopropylene glycol "DOWCAL N"		*	*	*	*



What can ITT Water & Wastewater do for you?

Integrated solutions for fluid handling are offered by ITT Water & Wastewater as a world leader in transport and treatment of wastewater. We provide a complete range of water, wastewater and drainage pumps, equipment for monitoring and control, units for primary and secondary biological treatment, products for filtration and disinfection, and related services. ITT Water & Wastewater, headquartered in Sweden, operates in some 140 countries across the world, with own plants in Europe, China and North and South America. The company is wholly owned by the ITT Corporation of White Plains, New York, supplier of advanced technology products and services.



SANITAIRE®

WEDECO



Visit our Web site for the latest version of this document and more information
webservices.ittwww.com/tpi

ITT Water & Wastewater AB
SE-174 87 Sundbyberg
Sweden

Visiting address:
Gesällvägen 33
Sundbyberg
Sweden

Tel. +46-8-475 60 00
Fax +46-8-475 69 00

© ITT Water & Wastewater AB. The original instruction is in English.
All non-English instructions are translations of the original instruction.
896676_7.0_en.US_2011-05_GPL.3153