

## RPZF4

socket RPZ - mixed contact - 16 A - < 250 V -  
screw clamp - for relay RXM4..



### Main

|                               |                           |
|-------------------------------|---------------------------|
| Range of product              | Zelio Relay               |
| Product or component type     | Socket                    |
| Contact terminal arrangement  | Mixed                     |
| Product compatibility         | Plug-in relay RPM (4 C/O) |
| Shape of pin                  | Flat                      |
| Device short name             | RPZ                       |
| Sale per indivisible quantity | 10                        |

### Complementary

|  |  |
|--|--|
| [I <sub>th</sub> ] conventional free air thermal current | 15 A   |
| [U <sub>e</sub> ] rated operational voltage              | < 250 V  |
| Tightening torque  | <= 1 N.m (M3.5 screw(s))   |
| Fixing mode  | By screw mounting on panel<br>Clip-on mounting on 35 mm symmetrical DIN rail |
| Marking  | CE   |
| Width  | 50 mm  |
| Product weight   | 0.094 kg   |

### Environment

|                                       |   |
|---------------------------------------|---|
| Connections - terminals               | - screw clamp terminals, flexible cable with cable end 1 x 0.25...2 x 1 mm <sup>2</sup> / AWG 22...AWG 17<br>- screw clamp terminals, solid cable without cable end 1 x 0.5...2 x 1.5 mm <sup>2</sup> / AWG 20...AWG 16 |
| Standards                             | IEC 61984   |
| Product certifications                | CSA<br>UL   |
| Ambient air temperature for storage   | -40...85 °C   |
| Ambient air temperature for operation | -40...55 °C   |
| IP degree of protection               | IP20 conforming to EN/IEC 60529   |

---

|                     |        |
|---------------------|--------|
| Dielectric strength | 2500 V |
|---------------------|--------|

---

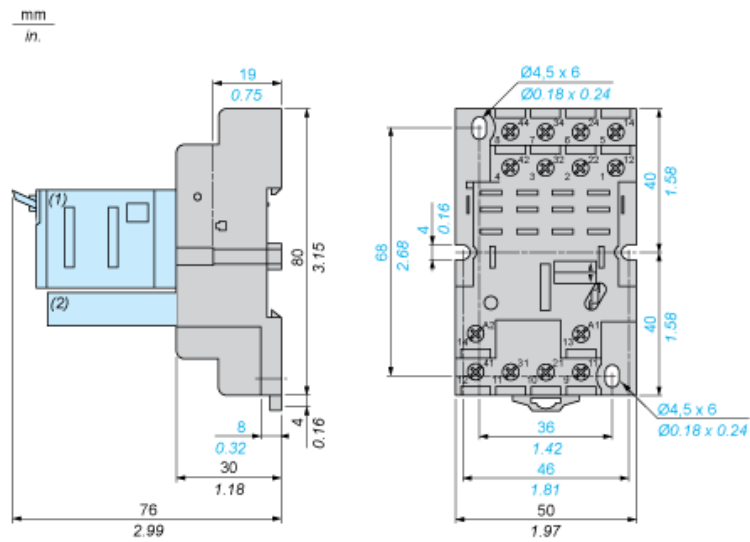
### Contractual warranty

---

|                 |           |
|-----------------|-----------|
| Warranty period | 18 months |
|-----------------|-----------|

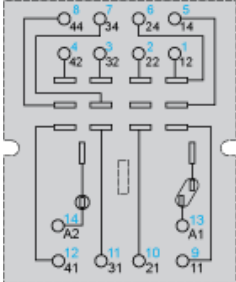
---

Dimensions



- (1) Relays
- (2) Protection module
- (3) Maintaining clamp

Wiring Diagram



Symbols shown in blue correspond to Nema marking.