



# OWNER'S MANUAL LED MONITOR\*

\* LED Monitors are LCD Monitors with LED Backlighting.

Please read the safety instructions carefully before using this product.

GS-27 Display Accessory

# TABLE OF CONTENTS

## 3 LICENSES

---

## 4 ASSEMBLY AND PREPARATION

---

- 4 Product Contents
- 5 Product and Button Description
- 6 Moving and Lifting the Monitor
- 6 Installing the Monitor
  - Assembling the Stand
- 8 - Installing on a Table
- 8 - Adjusting the angle
- 9 - Tidying up Cables
- 9 - Using the Kensington lock

## 10 USING THE MONITOR

---

- 10 HDMI Connection
- 11 Connecting to Headphones

## 12 USER SETTINGS

---

- 12 Activating the Main Menu
- 13 USER SETTINGS
  - 13 - Menu Settings
  - 14 - Picture Settings
  - 15 - Color Settings
  - 16 - Audio Settings
  - 17 - Other Settings

## 18 TROUBLESHOOTING

---

## 20 PRODUCT SPECIFICATIONS

---

- 21 Preset Mode (HDMI PC)
- 21 HDMI Timing (Video)
- 21 Power Indicator

## 22 PROPER POSTURE

---

- 22 Proper Posture for Using the Monitor

# LICENSES

Each model supports a different license.

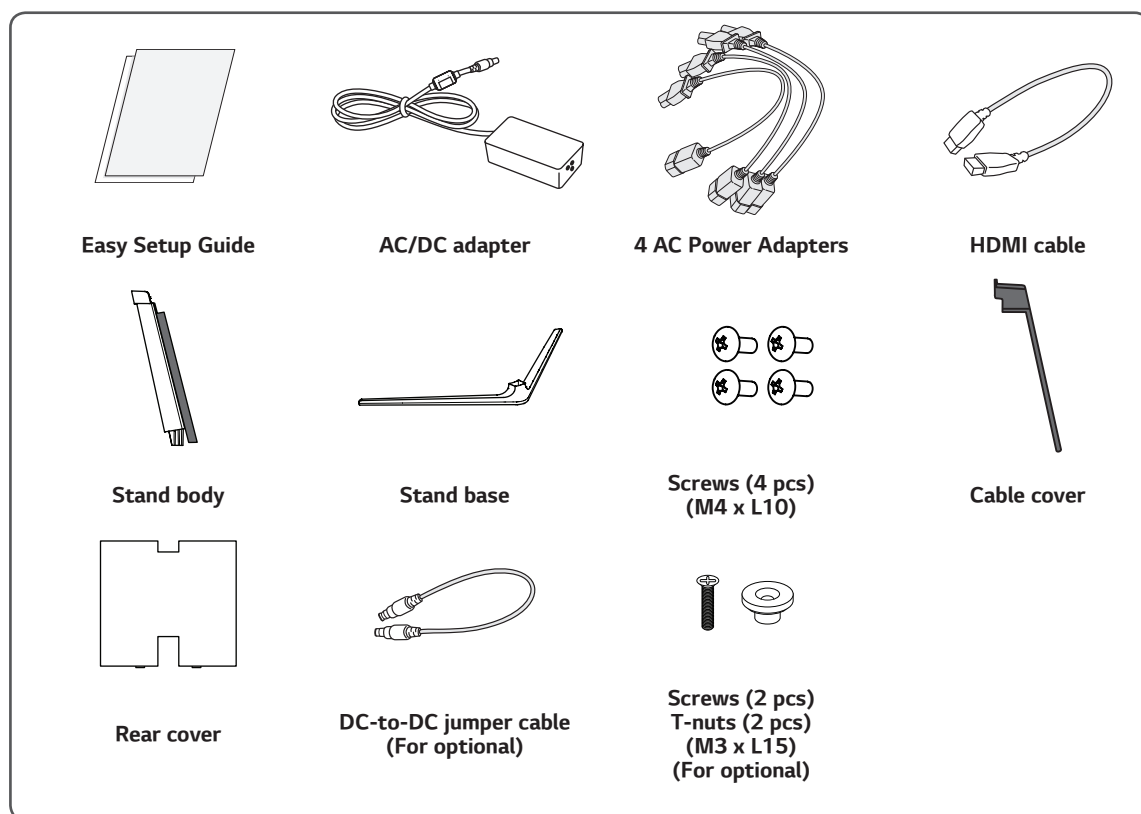


The terms HDMI and HDMI High-Definition Multimedia Interface, and the HDMI logo are trademarks or registered trademarks of HDMI Licensing LLC in the United States and other countries.

# ASSEMBLY AND PREPARATION

## Product Contents

Please check whether all the components are included in the box before using the product. If there are any missing components, contact the retailer where you purchased the product. Please note that the product and related components may look different from those shown in the illustrations.



### CAUTION

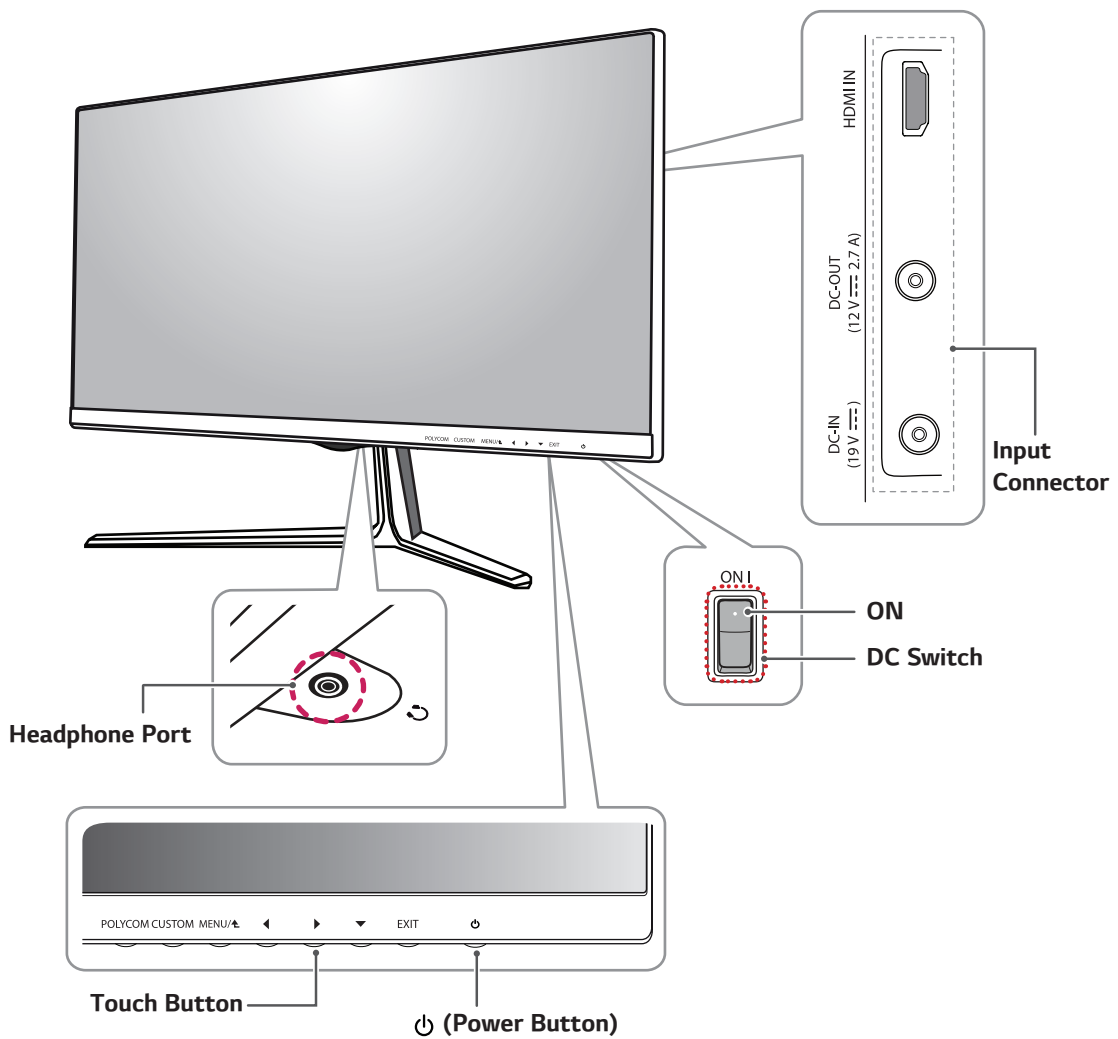
- Always use genuine components to ensure safety and product performance.
- The product warranty will not cover damage or injury caused by the use of counterfeit components.
- It is recommended that you use the accessories provided with the product.
- If you use generic cables not certified, the screen may not display or there may be image noise.



### NOTE

- The actual components may look different from those in the illustrations.
- Without prior notice, all product information and specifications contained in this manual are subject to change to improve the performance of the product.
- To purchase optional components, contact the retail store where you purchased the product.

## Product and Button Description



### NOTE

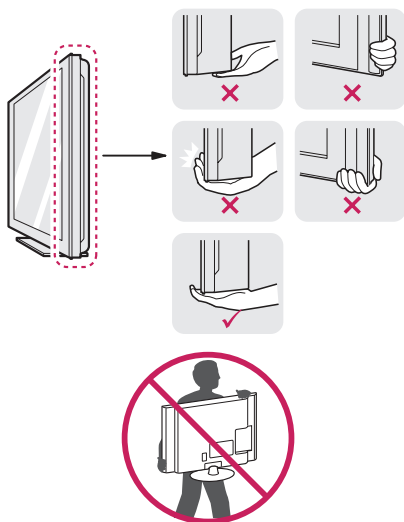
- Make sure that the DC switch on the bottom of the product is turned on before turning on the monitor.

## Moving and Lifting the Monitor

When moving or lifting the monitor, follow these instructions to prevent the monitor from being scratched or damaged and to ensure safe transportation, regardless of its shape or size.

- It is advisable to place the monitor in the original box or packing material before attempting to move it.
- Before moving or lifting the monitor, disconnect the power cord and all other cables.
- Hold the bottom and side of the monitor frame firmly.

Do not hold the panel itself.

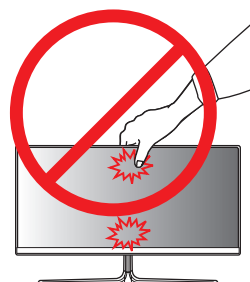


- When holding the monitor, the screen should face toward you to prevent it from being scratched.
- When transporting the monitor, do not expose the monitor to jolts or excessive vibration.
- When moving the monitor, keep it upright and never turn the monitor on its side or tilt it sideways.



### CAUTION

- Avoid touching the monitor screen as much as possible.
  - This may result in damage to the screen or some of the pixels used to create images.



## Installing the Monitor

### Assembling the Stand



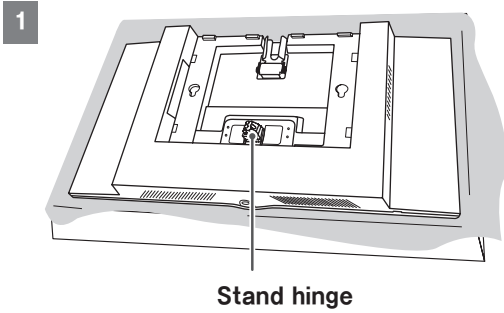
### CAUTION

- Illustrations in this document represent typical procedures, so they may look different from the actual product.
- Applying excessive force when tightening screws may cause damage to the monitor. Damage caused in this way will not be covered by the product warranty.
- When tightening the screws after mounting the stand base onto the stand hinge, be sure to hold the stand base and hinge together with your hand. Otherwise, the product may fall, causing personal injury or damage to the product.
- Do not carry the monitor upside down by just holding the base. This may cause the monitor to fall off the stand and could result in personal injury.
- When lifting or moving the monitor, do not touch the monitor screen. The force applied to the monitor screen may cause damage to it.

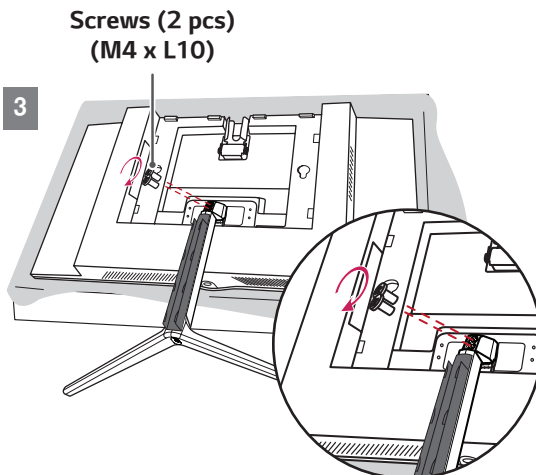
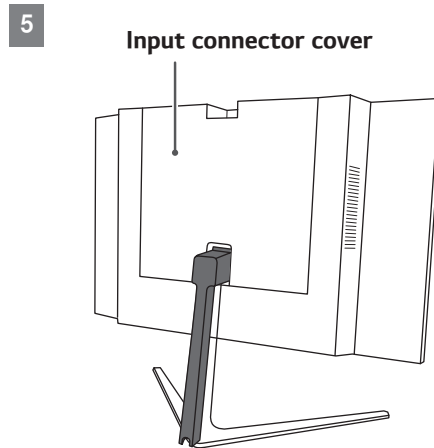
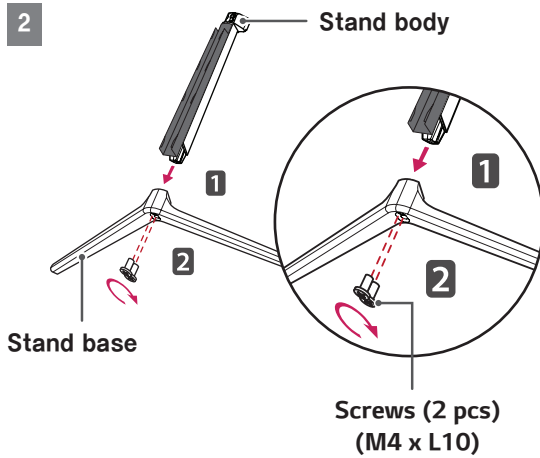
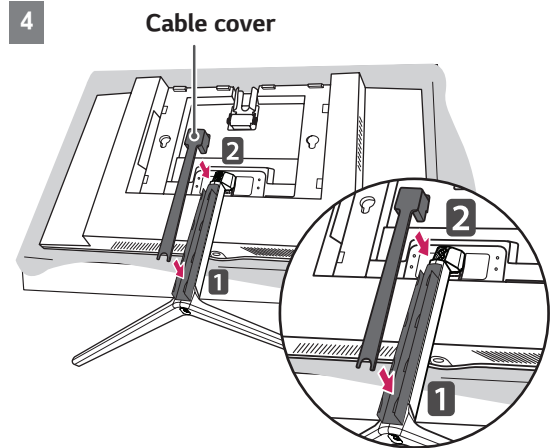


### NOTE

- You can disassemble the stand by following the reverse order of the assembly instructions.

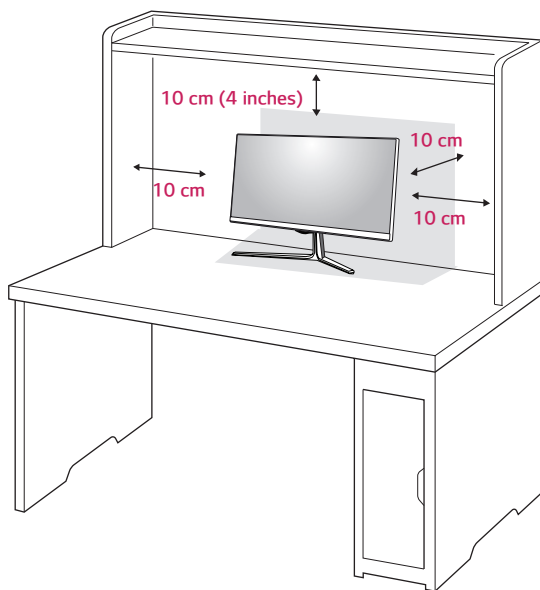
**CAUTION**

- To protect the screen from scratches, cover the surface with a soft cloth.

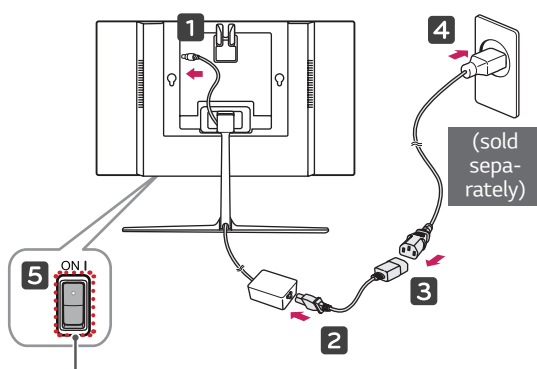


## Installing on a Table

- 1 Lift the monitor and place it on the table in an upright position. Place the monitor at least 10 cm (4 inches) away from the wall to ensure sufficient ventilation.



- 2 First connect the power adapter to the monitor and then connect it to the power cord using the power cord gender changer. Afterwards connect the power cord to a wall outlet and then turn on the DC switch.



DC Switch

- 3 Lastly turn on the monitor by pressing its power button.

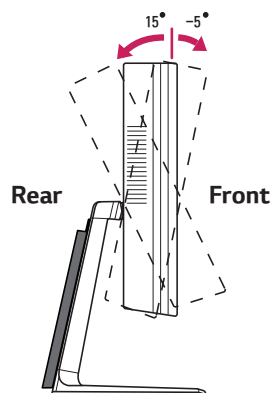


### CAUTION

- Disconnect the power cord first, and then move or install the monitor set. There is risk of electric shock.

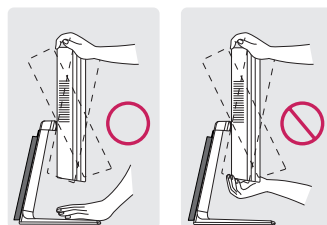
## Adjusting the angle

- 1 Place the monitor mounted on the stand base in an upright position.
- 2 Adjust the angle of the screen. The angle of the screen can be adjusted forward or backward from  $-5^{\circ}$  to  $15^{\circ}$  for a comfortable viewing experience.

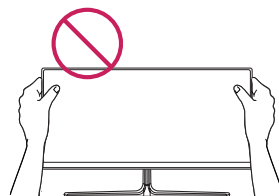


### WARNING

- When you adjust the angle, do not hold the stand as shown on the following illustration. You may injure your fingers.



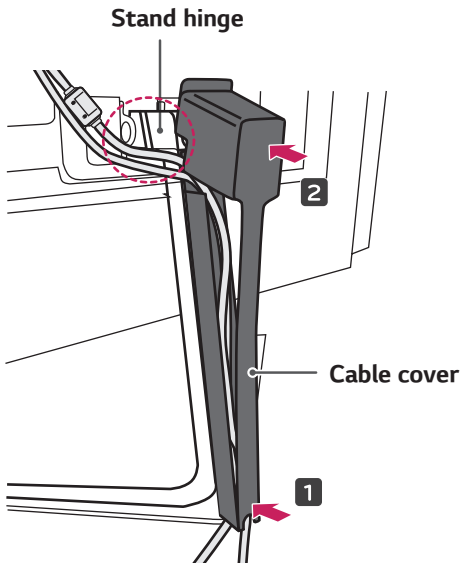
- Be careful not to touch or press the screen area when adjusting the angle of the monitor.





## Tidying up Cables

As illustrated below, arrange the cables so that they run below the stand hinge and then cover them with the cable cover from the bottom up.



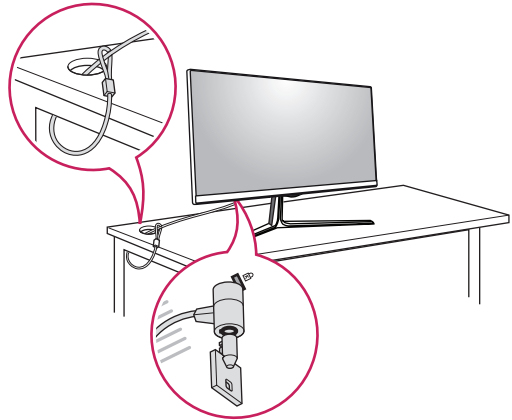
### ! NOTE

- You can disassemble the cable cover by following the assembly instructions in reverse order.

## Using the Kensington lock

The Kensington security system connector is located on the bottom of the Monitor. For more information on installation and usage, refer to the Kensington lock owner's manual or visit the website: <http://www.kensington.com>.

Connect the Kensington security system cable between the Monitor set and a table.



### ! NOTE

- The Kensington security system is optional. You can obtain additional accessories from most electronics stores.

# USING THE MONITOR



## CAUTION

- Do not press the screen for a prolonged time. This may cause image distortion.
- Do not display a still image on the screen for a prolonged time. This may cause image retention. Use a screensaver if possible.



## NOTE

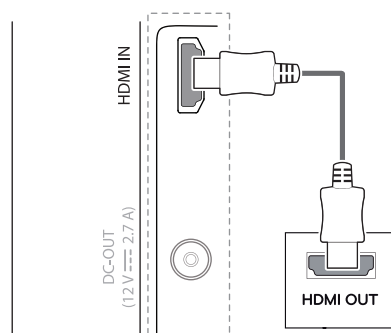
- The monitor may flicker when turned on in an area where the temperature is low. This is normal.
- Sometimes red, green, or blue spots may appear on the screen. This is normal.

## HDMI Connection

- This monitor supports the \*Plug and Play feature.

\*Plug and Play: A feature that allows you to add a device to your computer without having to re-configure anything or install any manual drivers.

Transmits digital video and audio signals from an external device to the monitor. Connect an external device to the monitor using the HDMI cable as illustrated below.

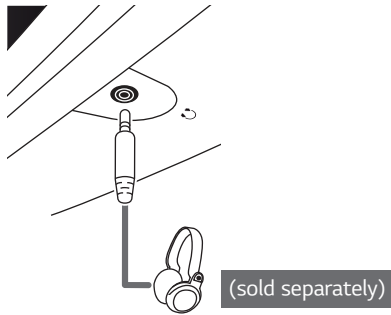


## CAUTION

- Connecting your PC to the monitor using the HDMI cable may cause device compatibility issues.
- DVI to HDMI/DP (DisplayPort) to HDMI cables may cause compatibility issues.
- Use a certified cable with the HDMI logo attached. If you do not use a certified HDMI cable, the screen may not display, or a connection error may occur.
- Recommended HDMI cable types
  - High-speed HDMI<sup>®</sup>/TM cables
  - High-speed HDMI<sup>®</sup>/TM Ethernet cables

## Connecting to Headphones

Connect peripherals to the monitor via the headphones port. Connect as illustrated.



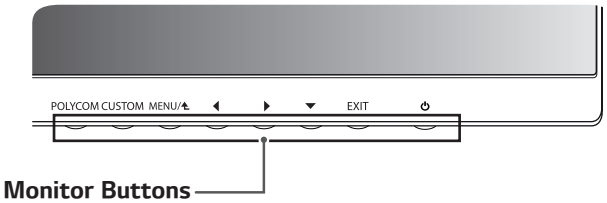
### NOTE

- Peripheral devices are sold separately.
- Depending on the audio settings of the PC and external device, headphones and speaker functions may be limited.

# USER SETTINGS

## Activating the Main Menu

- 1 Press the Menu ( MENU/▲ ) button on the bottom of the monitor.
- 2 Adjust options by using the ◀, ▶, and ▼ buttons. To return to the upper menu or set other menu items, use the ▲ button.
- 3 Press EXIT to leave the menu.



Button	Description
⏻	Turns on/off the monitor.
EXIT	Exits the main menu
▼	Enters the menu feature and selects and sets options.
▶	
◀	
MENU/▲	Enables the main menu.
CUSTOM	Disables the POLYCOM menu. (You can set each feature to suit your preference.)
POLYCOM	Enables the POLYCOM menu. (This mode is optimized for videoconferencing, and when in this mode, some features may not work.)



### NOTE

- All of the buttons are touch sensitive and can be operated by simply touching the bottom of the monitor.

## USER SETTINGS

### Menu Settings

- 1 To display the **OSD menu**, press the **Menu** ( MENU/▲ ) button on the bottom of the monitor.
- 2 Adjust options by using the ◀, ▶, and ▼ buttons.
- 3 Select **Next Menu** to set more options.
- 4 Press the **EXIT** button to leave the OSD menu.  
To return to the upper menu or set other menu items, use the ▲ button.



Each option is described below.

Menu	Description				
<b>Volume</b>	Adjusts the volume level. <div> <b>NOTE</b> <ul style="list-style-type: none"> <li>Press the Menu ( MENU/▲ ) button in the Volume menu to enable or disable the mute function.</li> </ul> </div>				
<b>Brightness</b>	Adjusts the screen brightness.				
<b>Wide/Original</b>	Adjusts the aspect ratio of the screen. <div> <b>NOTE</b> <ul style="list-style-type: none"> <li>The ratio is disabled in the interlaced signal.</li> </ul> </div> <table border="1"> <tr> <td><b>Wide</b></td><td>Displays the video in wide screen, regardless of the video signal input.</td></tr> <tr> <td><b>Original</b></td><td>Displays the video according to the aspect ratio of the video signal input.</td></tr> </table>	<b>Wide</b>	Displays the video in wide screen, regardless of the video signal input.	<b>Original</b>	Displays the video according to the aspect ratio of the video signal input.
<b>Wide</b>	Displays the video in wide screen, regardless of the video signal input.				
<b>Original</b>	Displays the video according to the aspect ratio of the video signal input.				
<b>Reset</b>	Restores the default settings.				
<b>Next Menu</b>	Sets more options.				

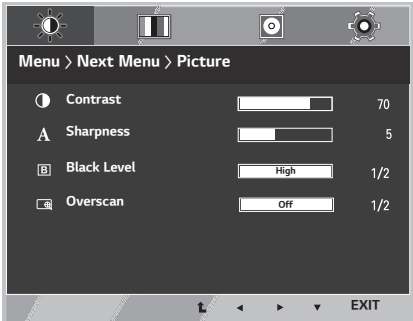


#### CAUTION

- The actual On Screen Displays (OSDs) that appear on your monitor may differ from those shown in this owner's manual.

# Picture Settings

- \* This feature only works in CUSTOM mode.
- 1 To display the **OSD menu**, press the **Menu ( MENU/⬆ ) button on the bottom of the monitor.**
- 2 Select **Next Menu** by pressing the **▼ button.**
- 3 Go to **Picture** by pressing the **▶ button.**
- 4 Adjust options by using the **◀, ▶, and ▼ buttons.**
- 5 Press the **EXIT** button to leave the OSD menu.  
To return to the upper menu or set other menu items, use the **⬆ button.**



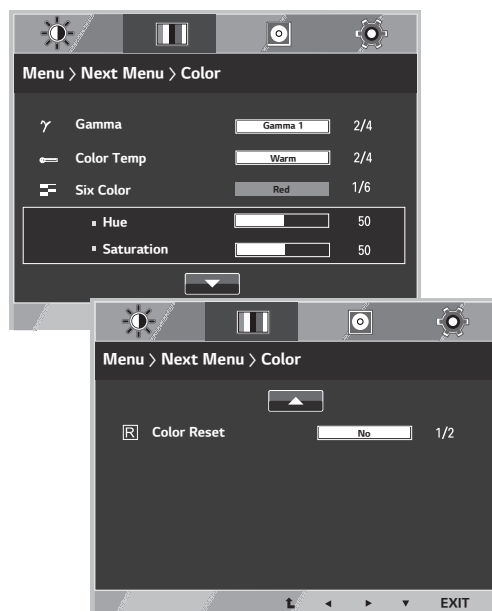
Each option is described below.

Menu > Next Menu > Picture	Description	
Contrast	Adjusts the screen contrast.	
Sharpness	Adjusts the screen sharpness.	
Black Level	Sets the offset level. <ul style="list-style-type: none"><li>• Offset: A reference for video signals. Offset is the darkest color that the monitor can display.</li></ul>	
	High	The screen picture gets brighter.
	Low	The screen picture gets darker.
Overscan	Selects the range of the output image for DTV timing in HDMI input. If the monitor is connected to an AV device, we recommend you enable Overscan.	

## Color Settings

\* This feature only works in CUSTOM mode.

- 1 To display the **OSD menu**, press the **Menu** ( MENU/▲ ) button on the bottom of the monitor.
- 2 Select **Next Menu** by pressing the ▼ button.
- 3 Go to **Color** by pressing the ► button.
- 4 Adjust options by using the ◀, ▶, and ▼ buttons.
- 5 Press the **EXIT** button to leave the OSD menu.  
To return to the upper menu or set other menu items, use the ▲ button.



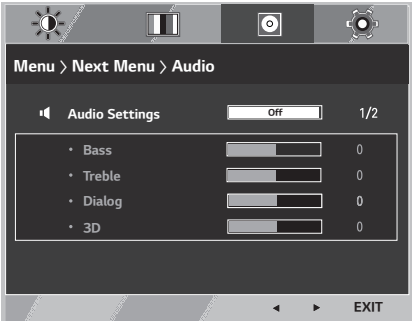
Each option is described below.

Menu > Next Menu > Color	Description	
<b>Gamma</b>	Custom gamma settings: Off, Gamma 0, Gamma 1, and Gamma 2. A higher gamma setting will show brighter images, and a lower gamma setting will result in darker images.	
<b>Color Temp</b>	<b>Custom</b>	The user can adjust it to red, green, or blue by customization.
	<b>Warm</b>	Sets the screen color to a reddish tone.
	<b>Medium</b>	Sets the screen color to between a reddish and a bluish tone.
	<b>Cool</b>	Sets the screen color to a bluish tone.
<b>Red</b>	Customizes the picture color by adjusting red, green, and blue arbitrarily.	
<b>Green</b>		
<b>Blue</b>		
<b>Six Color</b>	Fulfills your color requirements by adjusting the tone and saturation of the six colors (red, green, blue, cyan, magenta, and yellow) and then saving those settings.	
	<b>Hue</b>	Adjusts the tone of the screen colors.
	<b>Saturation</b>	Adjusts the saturation of the screen colors. The lower the value, the less saturated and brighter the colors become. The higher the value, the more saturated and darker the colors become.
<b>Reset</b>	Returns the colors to the default settings.	

# Audio Settings

\* This feature only works in CUSTOM mode.

- 1 To display the **OSD menu**, press the **Menu ( MENU/▲ )** button on the bottom of the monitor.
- 2 Select **Next Menu** by pressing the **▼** button.
- 3 Go to **Audio** by pressing the **►** button.
- 4 Adjust options by using the **◀**, **►**, and **▼** buttons.
- 5 Press the **EXIT** button to leave the OSD menu.  
To return to the upper menu or set other menu items, use the **▲** button.



Each option is described below.

Menu > Next Menu > Audio		Description
Audio Settings	The user can set the sound quality manually.	
	Bass	Adjusts bass.
	Treble	Adjusts treble.
	Dialog	Adjusts audio.
	3D	Adjusts the three-dimensional effect of the sound.



## Other Settings

- 1 To display the OSD menu, press the Menu ( MENU/▲ ) button on the bottom of the monitor.
- 2 Select Next Menu by pressing the ▼ button.
- 3 Go to Others by pressing the ► button.
- 4 Adjust options by using the ◀, ▶, and ▼ buttons.
- 5 Press the EXIT button to leave the OSD menu.  
To return to the upper menu or set other menu items, use the ▲ button.



Each option is described below.

Menu > Next Menu > Others	Description	
<b>Language</b>	Sets the menu screen to the desired language.	
<b>Power Indicator</b>	Turns the Power Indicator on the front of the monitor on/off.	
	<b>ON</b>	The Power Indicator turns on automatically.
	<b>OFF</b>	The Power Indicator turns off.
<b>Button Sound</b>	The button tones can be turned on or off. The button tones can be heard on the following occasions: <ul style="list-style-type: none"> <li>• DC Power On/Off</li> <li>• MENU OSD On</li> <li>• CUSTOM OSD On</li> <li>• POLYCOM OSD On</li> </ul>	
<b>Automatic Standby</b>	Turns the monitor off automatically when there is no movement on the screen for a set period of time. You can set a timer for the auto-off function. (OFF, 4H, 6H, and 8H)	



### CAUTION

- The following only applies to monitors sold in the European market, and such monitors should meet ErP requirements.
  - \* If no particular adjustments have been made to the display, the monitor is set to turn off automatically 4H after the display is turned on.
  - \* To disable this setting, go to "Automatic Standby" in the OSD menu and set the option to Off.

# TROUBLESHOOTING

Nothing is displayed on the screen.	
Is the monitor's power cord plugged in?	<ul style="list-style-type: none"> <li>• Check if the power cord is correctly plugged into the power outlet.</li> </ul>
Is the power indicator on?	<ul style="list-style-type: none"> <li>• Turn on the DC switch on the bottom of the monitor.</li> <li>• Check your power cable connection and press the power button.</li> </ul>
Is the power turned on and the power indicator turns red?	<ul style="list-style-type: none"> <li>• Check your signal cable connection.</li> </ul>
Is the power indicator blinking?	<ul style="list-style-type: none"> <li>• If the monitor is in sleep mode, move the mouse, or press any key on the keyboard, to switch the display on.</li> <li>• Check if the computer is turned on.</li> </ul>
Is the "Out of Range" message being displayed?	<ul style="list-style-type: none"> <li>• This occurs when the signals transferred from your PC (graphics card) are outside the horizontal or vertical frequency range of your monitor. Please see the "<b>Product Specification</b>" section of this manual to set the appropriate frequency.</li> </ul>
Is the 'No Signal' message being displayed?	<ul style="list-style-type: none"> <li>• This message is displayed when the signal cable that connects your monitor and external device is dislocated or disconnected. Check the cable and reconnect it.</li> </ul>

The screen retains an image.	
Does image sticking occur even when the monitor is turned off?	<ul style="list-style-type: none"> <li>• Displaying a still image for a prolonged time may cause damage to the screen, resulting in the retention of the image.</li> <li>• To extend the lifetime of the monitor, use a screensaver.</li> </ul>

Screen display is unstable and shaky / Images displayed on the monitor leave shadow trails.	
Did you select the appropriate resolution?	<ul style="list-style-type: none"> <li>• If the selected resolution is HDMI 1080i 60/50 Hz (interlaced), the screen may be flickering. Therefore, change the resolution to 1080p or the recommended resolution.</li> </ul>



## NOTE

- **Vertical Frequency:** In order to display an image, the screen must be refreshed dozens of times per second, like a fluorescent lamp. The number of times the screen is refreshed per second is called vertical frequency, or refresh rate, and is represented by Hz.
- **Horizontal Frequency:** The time it takes to display one horizontal line is called the horizontal cycle. If 1 is divided by the horizontal interval, the result is the number of horizontal lines displayed per second. This is called horizontal frequency and is represented by kHz.

**NOTE**

- Check if your graphics card's resolution or frequency is within the range supported by your monitor and set your graphics card to the recommended (optimal) resolution in **Control Panel > Display > Settings**.
- Not setting your graphics card to the recommended (optimal) resolution may result in blurred text, a dimmed screen, a truncated display area or misalignment of the display.
- The setting method may differ depending on the computer and operating system, and some resolutions may not be available depending on your graphics card's performance. If this is the case, contact the manufacturer of your computer or graphics card for help.
- Some graphics cards may not support the 1920 x 1080 resolution. If the resolution cannot be displayed, contact the manufacturer of your graphics card.

**The display color is abnormal.**

Does the display appear discolored (16 colors)?	<ul style="list-style-type: none"> <li>• Set the color to 24 bit (true color) or higher. In Windows, go to Control Panel &gt; Display &gt; Settings &gt; Color Quality.</li> </ul>
Does the display color appear unstable or monochrome?	<ul style="list-style-type: none"> <li>• Check the connection status of the signal cable and connect it properly, or reinsert your PC's graphics card.</li> </ul>
Are there spots on the screen?	<ul style="list-style-type: none"> <li>• When using the monitor, pixilated spots (red, green, blue, white or black) may appear on the screen. This is normal for an LCD screen. It is not an error, nor is it related to the monitor's performance.</li> </ul>

**No sound from the headphone port.**

Are images displayed using HDMI input without sound?	<ul style="list-style-type: none"> <li>• Make sure that the headphone port connections are made properly.</li> <li>• Increase the volume in the menu.</li> <li>• Set the audio output of your PC to the monitor you are using. : On Microsoft Windows, go to Control Panel &gt; Hardware and Sound &gt; Sound &gt; Set your monitor as the default device.</li> </ul>
--	---

# PRODUCT SPECIFICATIONS

LCD screen	Type	Thin Film Transistor (TFT) Liquid Crystal Display (LCD) Screen
	Pixel Pitch	0.3114 mm x 0.3114 mm
Resolution	Max resolution	1920 x 1080 @ 60 Hz
	Recommended resolution	1920 x 1080 @ 60 Hz
Video signal	Horizontal frequency	30 kHz to 83 kHz
	Vertical frequency	56 Hz to 75 Hz
	Synchronization	Separate Sync.
Input Connector	HDMI IN	
Power	Rated power	19 V --- 3.7 A
	Power Consumption (Typical)	Operating mode: 31 W (normal) (Outgoing Condition) Sleep Mode ≤ 0.5 W Off mode ≤ 0.5 W Off mode ≤ 0.3 W (DC switch Off)
AC/DC adapter	ADS-110CL-19-3 190110G type, manufactured by Honor. Output: 19 V --- 5.79 A	
Stand Angle	Forward/Backward: -5° to 15° (Monitor)	
Environmental Conditions	Operating Condition	0 °C to 35 °C 10 % to 85 %
	Storing Conditions	-10 °C to 60 °C 10 % to 85 %
Audio Output	10 W + 10 W	
Dimension	Monitor Size (Width x Height x Depth)	
	With the stand	622.7 mm x 511.3 mm x 241.6 mm (24.5 inch x 20.1 inch x 9.5 inch)
	Without the stand	622.7 mm x 377.9 mm x 84.8 mm (24.5 inch x 14.8 inch x 3.3 inch)
	With packaging	694.0 mm x 183.0 mm x 445.0 mm (24.5 inch x 14.8 inch x 3.3 inch)
Weight	With the stand	6.8 kg (14.9 lb)
	Without the stand	6.0 kg (13.2 lb)
	With packaging	8.9 kg (19.6 lb)

Specifications are subject to change without notice.

## Preset Mode (HDMI PC)

Preset Mode (Preset mode)	Horizontal Frequency (kHz)	Vertical Frequency (Hz)	Polarity (H/V)	Remarks
720 x 400	31.468	70.08	-/+	
640 x 480	31.469	59.94	-/-	
640 x 480	37.5	75	-/-	
800 x 600	37.879	60.317	+/+	
800 x 600	46.875	75.0	+/+	
1024 x 768	48.363	60.0	-/-	
1024 x 768	60.023	75.029	+/+	
1152 x 864	67.5	75	+/+	
1280 x 1024	63.981	60.02	+/+	
1280 x 1024	79.976	75.035	+/+	
1680 x 1050	65.290	59.954	-/+	
1920 x 1080	67.5	60	+/+	

## HDMI Timing (Video)

Preset Mode (Preset mode)	Horizontal Frequency (kHz)	Vertical Frequency (Hz)	Remarks
480p	31.5	60	
576p	31.25	50	
720p	37.5	50	
720p	45	60	
1080p	56.25	50	
1080p	67.5	60	Recommended mode

## Power Indicator

MODE	LED Color
On Mode	Red
Sleep Mode	Blinking Red
Off Mode	Off

# PROPER POSTURE

## Proper Posture for Using the Monitor

Adjust the screen so that you can comfortably look at it at a slight downward angle from your natural eye level.

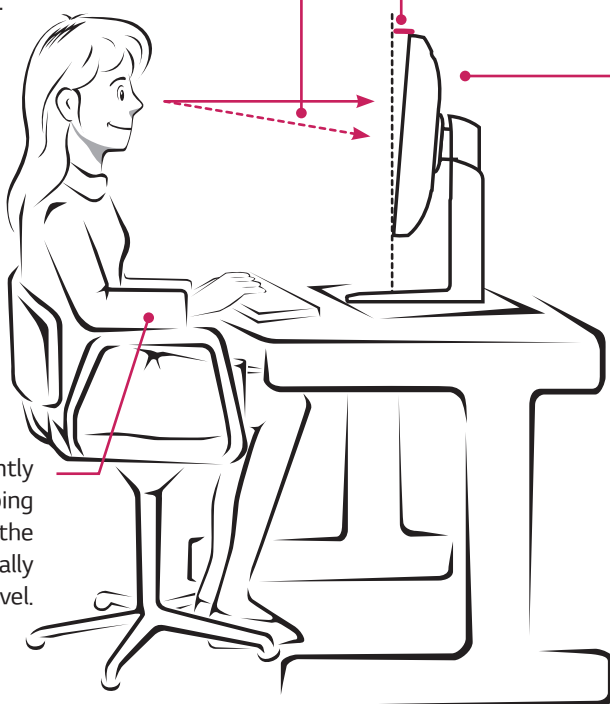
- Take a break for approximately 10 minutes every hour to reduce any fatigue caused by extended use.
- Adjust the angle of the monitor from  $-5^{\circ}$  to  $15^{\circ}$  to obtain the best view of the screen.

You should be looking slightly down at the screen.

Stand Angle from  $-5^{\circ}$  to  $15^{\circ}$

Adjust the position of the screen to minimize reflections.

Place your hands gently on the keyboard, keeping your arms bent at the elbows and horizontally level.





**Declaration of Conformity**

Trade Name: Polycom  
Model: GS-27 Display Accessory  
Responsible Party: LG Electronics Inc.  
Address: 1000 Sylvan Ave.  
Englewood Cliffs NJ 07632  
U.S.A  
TEL: 201-266-2534